

HOBBS

District I
1625 N. French Dr., Hobbs, NM 88240
Phone: (505) 393-6161 Fax: (505) 393-0720

District II
811 S. First St., Artesia, NM 88210
Phone: (505) 748-1233 Fax: (505) 748-9720

District III
1000 Rio Brazos Road, Aztec, NM 87410
Phone: (505) 334-6178 Fax: (505) 334-6170

District IV
1220 S. St. Francis Dr., Santa Fe, NM 87505
Phone: (505) 476-3460 Fax: (505) 476-3462

State of New Mexico
Energy, Minerals & Natural Resources Department
OIL CONSERVATION DIVISION
1220 South St. Francis Dr.
Santa Fe, NM 87505

Form C-102

SEP 20 2013

Received August 1, 2011

Submit one copy to appropriate

District Office

RECEIVED

☐ AMENDED REPORT

WELL LOCATION AND ACREAGE DEDICATION PLAT

¹ API Number 30-025-41425	² Pool Code 14865	³ Pool Name Cruz; Bone Spring
⁴ Property Code 40070	⁵ Property Name JAZZMASTER 17 STATE	
⁷ OGRID No. 270329	⁸ Operator Name ENDURANCE RESOURCES, LLC	⁶ Well Number 2H
		⁹ Elevation 3707.9

¹⁰ Surface Location

UL or lot no.	Section	Township	Range	Lot Idn	Feet from the	North/South line	Feet from the	East/West line	County
C	17	23 S	33 E		330	NORTH	1980	WEST	LEA

¹¹ Bottom Hole Location If Different From Surface

UL or lot no.	Section	Township	Range	Lot Idn	Feet from the	North/South line	Feet from the	East/West line	County
N	17	23 S	33 E		330	SOUTH	1980	WEST	LEA

¹² Dedicated Acres 11.00	¹³ Joint or Infill	¹⁴ Consolidation Code	¹⁵ Order No.
---	-------------------------------	----------------------------------	-------------------------

No allowable will be assigned to this completion until all interests have been consolidated or a non-standard unit has been approved by the division.

<p>N89°40'47"E 2641.87 FT</p> <p>NW CORNER SEC. 17 LAT. = 32.3121359°N LONG. = 103.6029979°W NMSP EAST (FT) N = 478056.11 E = 766965.07</p> <p>W Q CORNER SEC. 17 LAT. = 32.3048969°N LONG. = 103.6029880°W NMSP EAST (FT) N = 475422.58 E = 766986.08</p> <p>SW CORNER SEC. 17 LAT. = 32.2976371°N LONG. = 103.6029777°W NMSP EAST (FT) N = 472781.48 E = 767007.27</p> <p>2634.16 FT</p> <p>2637.90 FT</p>		<p>N89°40'47"E 2641.87 FT</p> <p>NE CORNER SEC. 17 LAT. = 32.3121170°N LONG. = 103.5858993°W NMSP EAST (FT) N = 478085.64 E = 772247.63</p> <p>E Q CORNER SEC. 17 LAT. = 32.3048592°N LONG. = 103.5858958°W NMSP EAST (FT) N = 475445.24 E = 772267.14</p> <p>SE CORNER SEC. 17 LAT. = 32.2976020°N LONG. = 103.5858925°W NMSP EAST (FT) N = 472805.11 E = 772286.57</p> <p>2641.02 FT</p> <p>2640.76 FT</p>		<p>¹⁷ OPERATOR CERTIFICATION</p> <p>I hereby certify that the information contained herein is true and complete to the best of my knowledge and belief, and that this organization either owns a working interest or unleased mineral interest in the land including the proposed bottom hole location or has a right to drill this well at this location pursuant to a contract with an owner of such a mineral or working interest, or to a voluntary pooling agreement or a compulsory pooling order heretofore entered by the division.</p> <p><i>John Logemann</i> 9-18-13 Signature Date</p> <p>John Logemann Printed Name</p> <p>john@enduranceresourcesllc.com E-mail Address</p>
<p>2637.35°W</p> <p>2641.73 FT</p> <p>2637.90 FT</p> <p>2641.73 FT</p>		<p>2641.87 FT</p> <p>2641.02 FT</p> <p>2640.76 FT</p> <p>2641.73 FT</p>		<p>¹⁸ SURVEYOR CERTIFICATION</p> <p>I hereby certify that the well location shown on this plat was plotted from field notes of actual surveys made by me or under my supervision, and that the same is true and correct to the best of my belief.</p> <p>JULY 16, 2013</p> <p>Date of Survey</p> <p><i>John Logemann</i> Signature and Seal of Professional Surveyor</p> <p>Certificate Number: HILMONT, JARAMILLO, PLS 12797 SURVEY NO. 2092</p>

ELG 9-25-2013

SEP 26 2013

P.m.

District I

1625 N. French Dr., Hobbs, NM 88240
Phone:(575) 393-6161 Fax:(575) 393-0720

District II

811 S. First St., Artesia, NM 88210
Phone:(575) 748-1283 Fax:(575) 748-9720

District III

1000 Rio Brazos Rd., Aztec, NM 87410
Phone:(505) 334-6178 Fax:(505) 334-6170

District IV

1220 S. St Francis Dr., Santa Fe, NM 87505
Phone:(505) 476-3470 Fax:(505) 476-3462

State of New Mexico
Energy, Minerals and Natural
Resources
Oil Conservation Division
1220 S. St Francis Dr.
Santa Fe, NM 87505

Form C-102

August 1, 2011

Permit 173664

WELL LOCATION AND ACREAGE DEDICATION PLAT

1. API Number	2. Pool Code 14865	3. Pool Name CRUZ BONE SPRING
4. Property Code	5. Property Name JAZZMASTER 17 STATE	6. Well No. 002H
7. OGRID No. 270329	8. Operator Name ENDURANCE RESOURCES LLC	9. Elevation 3708

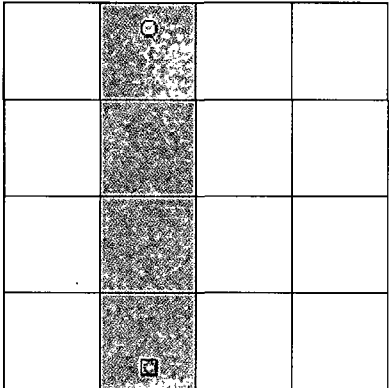
10. Surface Location

UL - Lot	Section	Township	Range	Lot	Feet From	N/S Line	Feet From	E/W Line	County
C	17	23S	33E	Idn	330	N	1980	W	LEA

11. Bottom Hole Location If Different From Surface

UL - Lot	Section	Township	Range	Lot	Feet From	N/S Line	Feet From	E/W Line	County
N	17	23S	33E	N	330	S	1980	W	LEA
12. Dedicated Acres 0.00	13. Joint or Infill	14. Consolidation Code N/A	15. Order No.						

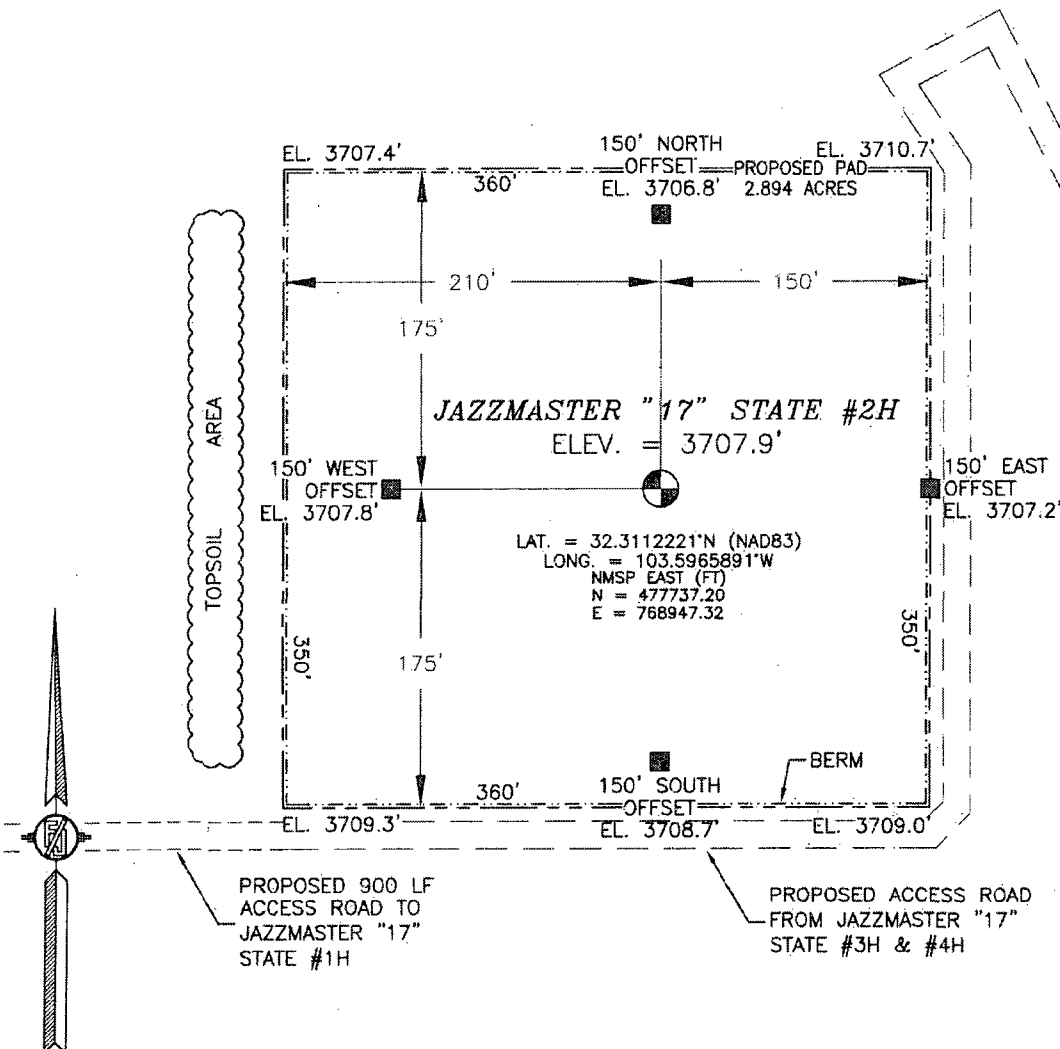
**NO ALLOWABLE WILL BE ASSIGNED TO THIS COMPLETION UNTIL ALL INTERESTS HAVE BEEN CONSOLIDATED
OR A NON-STANDARD UNIT HAS BEEN APPROVED BY THE DIVISION**

	<p style="text-align: center;">OPERATOR CERTIFICATION</p> <p><i>I hereby certify that the information contained herein is true and complete to the best of my knowledge and belief, and that this organization either owns a working interest or unleased mineral interest in the land including the proposed bottom hole location(s) or has a right to drill this well at this location pursuant to a contract with an owner of such a mineral or working interest, or to a voluntary pooling agreement or a compulsory pooling order heretofore entered by the division.</i></p> <p>E-Signed By: Title: Date:</p> <hr/> <p style="text-align: center;">SURVEYOR CERTIFICATION</p> <p><i>I hereby certify that the well location shown on this plat was plotted from field notes of actual surveys made by me or under my supervision, and that the same is true and correct to the best of my belief.</i></p> <p>Surveyed By: Filimon Jaramillo Date of Survey: 7/16/2013 Certificate Number: 12797</p>
--	---

SECTION 17, TOWNSHIP 23 SOUTH, RANGE 33 EAST, N.M.P.M.
LEA COUNTY, STATE OF NEW MEXICO
SITE MAP

NOTE: LATITUDE AND LONGITUDE COORDINATES ARE SHOWN USING THE NORTH AMERICAN DATUM OF 1983 (NAD83). LISTED NEW MEXICO STATE PLANE EAST COORDINATES ARE GRID (NAD83). BASIS OF BEARING AND DISTANCES USED ARE NEW MEXICO STATE PLANE EAST COORDINATES MODIFIED TO THE SURFACE

SEC. 8
SEC. 17



010 50 100 200

SCALE 1" = 100'
DIRECTIONS TO LOCATION

FROM THE INTERSECTION OF STATE HIGHWAY 128 AND DELAWARE BASIN ROAD GO NORTH ON DELAWARE BASIN ROAD APPROX. 6.0 MILES TO LEASE ROAD ON LEFT (WEST) OF DELAWARE BASIN ROAD, TURN WEST GO APPROX. 5.35 MILES TO A EXISTING LEASE ROAD ON RIGHT (NORTH) TURN NORTH GO APPROX. 0.86 MILES TO A PROPOSED ROAD LATH WITH RED & WHITE FLAGGING, TURN RIGHT (EAST) GO APPROX. 0.42 MILES TO LOCATION.

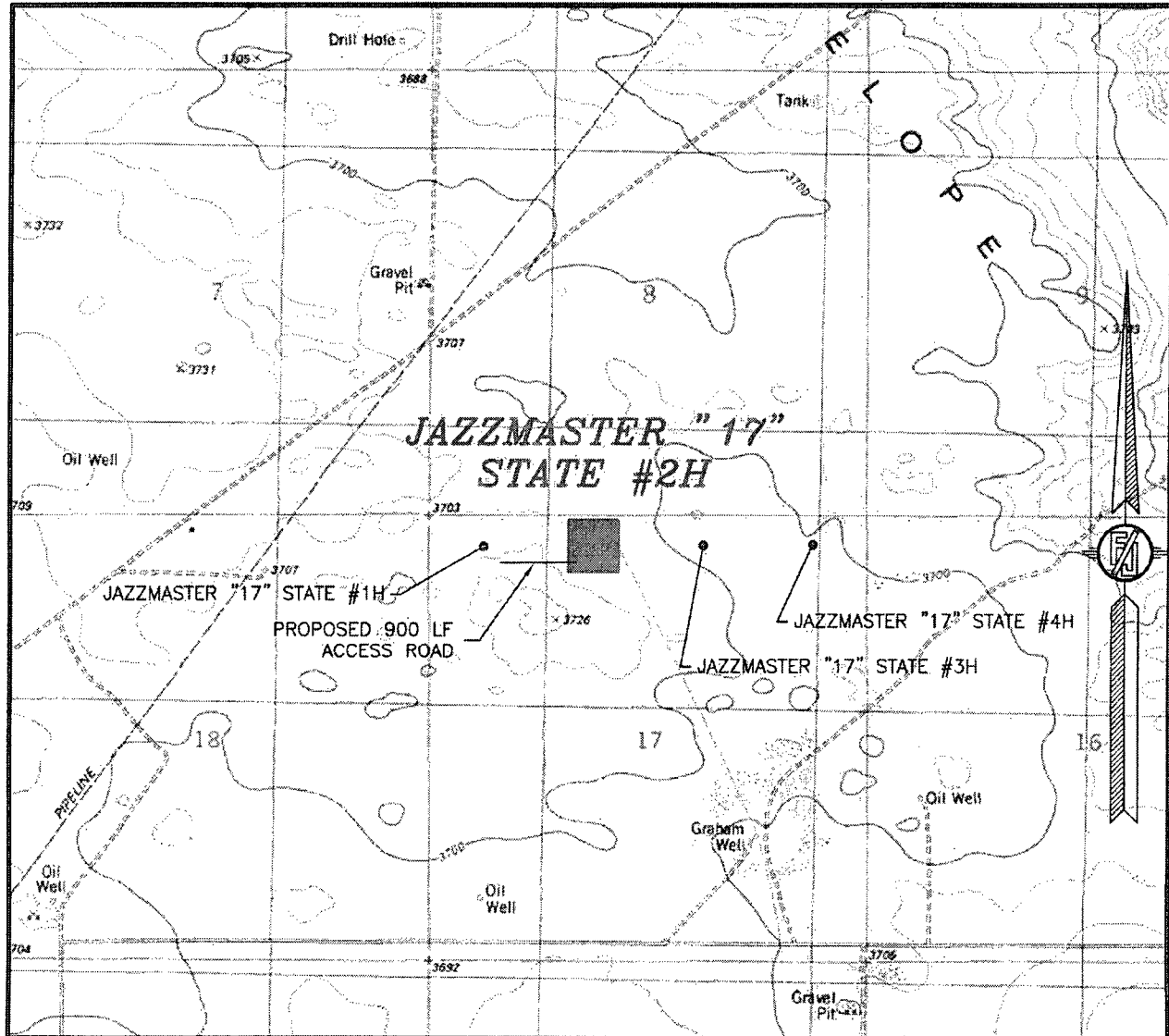
ENDURANCE RESOURCES, LLC
JAZZMASTER "17" STATE #2H
LOCATED 330 FT. FROM THE NORTH LINE
AND 1980 FT. FROM THE WEST LINE OF
SECTION 17, TOWNSHIP 23 SOUTH,
RANGE 33 EAST, N.M.P.M.
LEA COUNTY, STATE OF NEW MEXICO

JULY 16, 2013

SURVEY NO. 2092

MADRON SURVEYING, INC. 301 SOUTH CANAL CARLSBAD, NEW MEXICO
(575) 234-3341

SECTION 17, TOWNSHIP 23 SOUTH, RANGE 33 EAST, N.M.P.M.
LEA COUNTY, STATE OF NEW MEXICO
LOCATION VERIFICATION MAP



USGS QUAD MAP:
TIP TOP WELLS

NOT TO SCALE

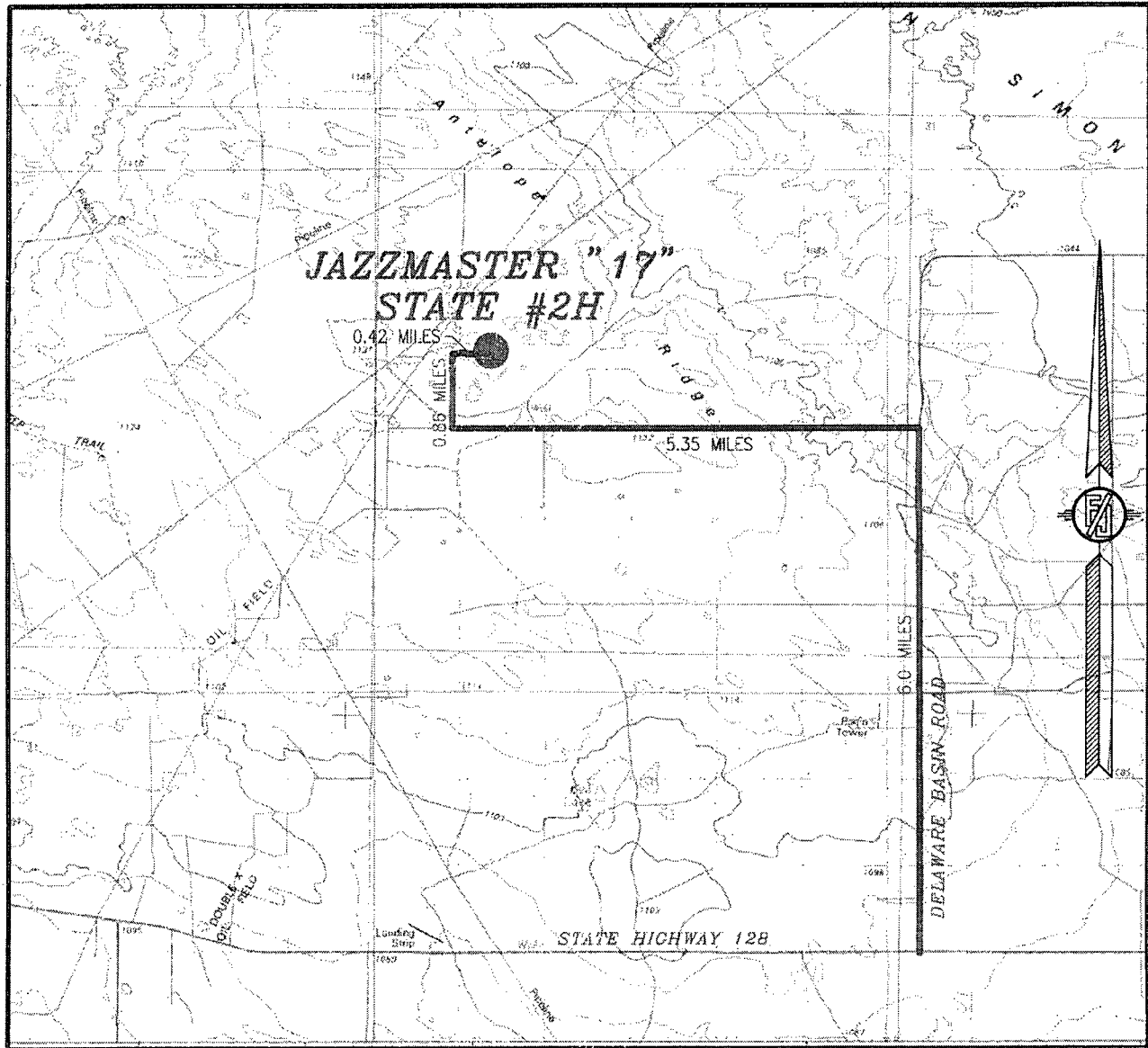
ENDURANCE RESOURCES, LLC
JAZZMASTER "17" STATE #2H
LOCATED 330 FT. FROM THE NORTH LINE
AND 1980 FT. FROM THE WEST LINE OF
SECTION 17, TOWNSHIP 23 SOUTH,
RANGE 33 EAST, N.M.P.M.
LEA COUNTY, STATE OF NEW MEXICO

JULY 16, 2013

SURVEY NO. 2092

MADRON SURVEYING, INC. 301 SOUTH CANAL CARLSBAD, NEW MEXICO
(575) 234-3341

SECTION 17, TOWNSHIP 23 SOUTH, RANGE 33 EAST, N.M.P.M.
LEA COUNTY, STATE OF NEW MEXICO
VICINITY MAP



NOT TO SCALE

ENDURANCE RESOURCES, LLC
JAZZMASTER "17" STATE #2H
LOCATED 330 FT. FROM THE NORTH LINE
AND 1980 FT. FROM THE WEST LINE OF
SECTION 17, TOWNSHIP 23 SOUTH,
RANGE 33 EAST, N.M.P.M.
LEA COUNTY, STATE OF NEW MEXICO

JULY 16, 2013

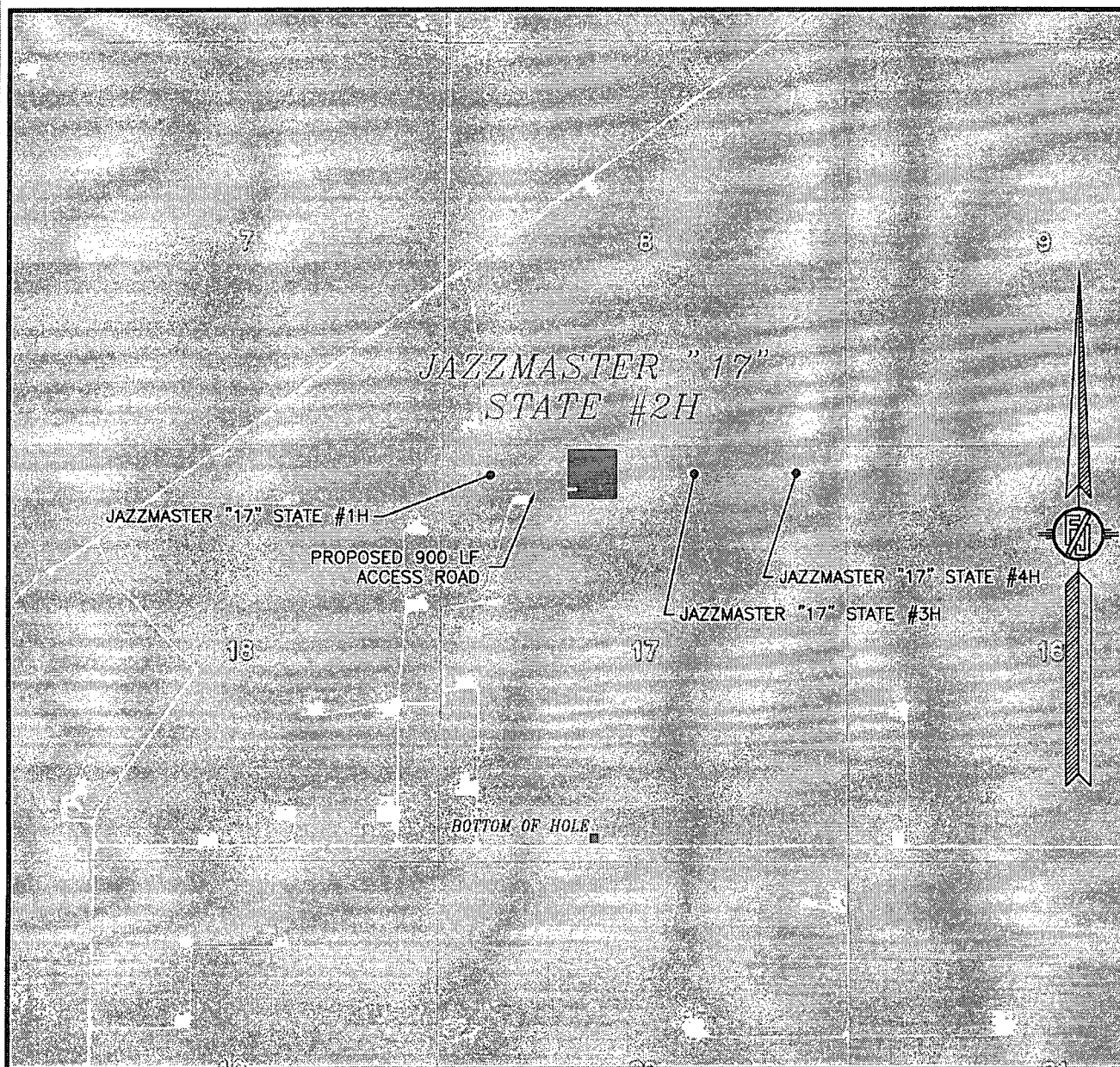
DIRECTIONS TO LOCATION

FROM THE INTERSECTION OF STATE HIGHWAY 128 AND DELAWARE BASIN ROAD GO NORTH ON DELAWARE BASIN ROAD APPROX. 6.0 MILES TO LEASE ROAD ON LEFT (WEST) OF DELAWARE BASIN ROAD, TURN WEST GO APPROX. 5.35 MILES TO A EXISTING LEASE ROAD ON RIGHT (NORTH) TURN NORTH GO APPROX. 0.86 MILES TO A PROPOSED ROAD LATH WITH RED & WHITE FLAGGING, TURN RIGHT (EAST) GO APPROX. 0.42 MILES TO LOCATION.

MADRON SURVEYING, INC. 301 SOUTH CANAL (575) 234-3341 CARLSBAD, NEW MEXICO

SURVEY NO. 2092

SECTION 17, TOWNSHIP 23 SOUTH, RANGE 33 EAST, N.M.P.M.
LEA COUNTY, STATE OF NEW MEXICO
AERIAL PHOTO



NOT TO SCALE
AERIAL PHOTO:
GOOGLE EARTH
MARCH 2012

ENDURANCE RESOURCES, LLC
JAZZMASTER "17" STATE #2H
LOCATED 330 FT. FROM THE NORTH LINE
AND 1980 FT. FROM THE WEST LINE OF
SECTION 17, TOWNSHIP 23 SOUTH,
RANGE 33 EAST, N.M.P.M.
LEA COUNTY, STATE OF NEW MEXICO

JULY 16, 2013

SURVEY NO. 2092

MADRON SURVEYING, INC. 301 SOUTH CANAL (575) 234-3341 CARLSBAD, NEW MEXICO