

District I
1625 N. French Dr., Hobbs, NM 88240
Phone: (575) 393-6161 Fax: (575) 393-0720
District II
511 S. First St., Artesia, NM 88210
Phone: (575) 748-1283 Fax: (575) 748-7720
District III
1000 Rio Brazos Road, Aztec, NM 87410
Phone: (505) 334-6178 Fax: (505) 334-6170
District IV
1220 S. St. Francis Dr., Santa Fe, NM 87505
Phone: (505) 476-3460 Fax: (505) 476-3462

HOBBS OCO
SEP 20 2013
RECEIVED

State of New Mexico
Energy, Minerals & Natural Resources Department
OIL CONSERVATION DIVISION
1220 South St. Francis Dr.
Santa Fe, NM 87505

Form C-102
Revised August 1, 2011
Submit one copy to appropriate
District Office

☐ AMENDED REPORT

WELL LOCATION AND ACREAGE DEDICATION PLAT

¹ API Number 30-025-41427	² Pool Code 14865	³ Pool Name Cruz; Bone Spring
⁴ Property Code 40147	⁵ Property Name JAGUAR 18 STATE	⁶ Well Number 1H
⁷ OGRID No. 270329	⁸ Operator Name ENDURANCE RESOURCES, LLC	⁹ Elevation 3716.3

¹⁰ Surface Location

UL or lot no.	Section	Township	Range	Lot Idn	Feet from the	North/South line	Feet from the	East/West line	County
1	18	23 S	33 E		330	NORTH	660	WEST	LEA

¹¹ Bottom Hole Location If Different From Surface

UL or lot no.	Section	Township	Range	Lot Idn	Feet from the	North/South line	Feet from the	East/West line	County
4	18	23 S	33 E		330	SOUTH	660	WEST	LEA

¹² Dedicated Acres 151.40	¹³ Joint or Infill	¹⁴ Consolidation Code	¹⁵ Order No.
--	-------------------------------	----------------------------------	-------------------------

No allowable will be assigned to this completion until all interests have been consolidated or a non-standard unit has been approved by the division.

<p>N89°45'26"E 2603.80 FT</p> <p>NW CORNER SEC. 18 LAT. = 32.3121717°N LONG. = 103.6198502°W NMSP EAST (FT) N = 478034.05 E = 761758.59</p> <p>LOT 1</p>		<p>N89°45'26"E 2603.80 FT</p> <p>NE CORNER SEC. 18 LAT. = 32.3121359°N LONG. = 103.6029979°W NMSP EAST (FT) N = 478056.11 E = 766965.07</p> <p>LOT 2</p>	
<p>W Q CORNER SEC. 18 LAT. = 32.3049270°N LONG. = 103.6198485°W NMSP EAST (FT) N = 475398.44 E = 761776.64</p> <p>LOT 3</p>		<p>E Q CORNER SEC. 18 LAT. = 32.3048969°N LONG. = 103.6029880°W NMSP EAST (FT) N = 475422.58 E = 766986.08</p> <p>LOT 4</p>	
<p>SURFACE LOCATION JAGUAR "18" STATE #1H ELEV. = 3716.3' LAT. = 32.3112603°N (NAD83) LONG. = 103.6177141°W NMSP EAST (FT) N = 477706.87 E = 762420.74</p>		<p>NOTE: LATITUDE AND LONGITUDE COORDINATES ARE SHOWN USING THE NORTH AMERICAN DATUM OF 1983 (NAD83). LISTED NEW MEXICO STATE PLANE EAST COORDINATES ARE GRID (NAD83). BASIS OF BEARING AND DISTANCES USED ARE NEW MEXICO STATE PLANE EAST COORDINATES MODIFIED TO THE SURFACE.</p>	
<p>BOTTOM OF HOLE LAT. = 32.2985702°N LONG. = 103.6177237°W NMSP EAST (FT) N = 473090.23 E = 762448.58</p>		<p>BOTTOM OF HOLE SW CORNER SEC. 18 LAT. = 32.2976573°N LONG. = 103.6198477°W NMSP EAST (FT) N = 472753.76 E = 761794.48</p> <p>S Q CORNER SEC. 18 LAT. = 32.2976485°N LONG. = 103.6115248°W NMSP EAST (FT) N = 472767.77 E = 764366.22</p> <p>SE CORNER SEC. 18 LAT. = 32.2976371°N LONG. = 103.6029777°W NMSP EAST (FT) N = 472781.48 E = 767007.27</p>	
<p>2644.41°W 2572.31 FT</p>		<p>S89°42'09"W 2641.63 FT</p>	

¹⁷ OPERATOR CERTIFICATION

I hereby certify that the information contained herein is true and complete to the best of my knowledge and belief, and that this organization either owns a working interest or unleased mineral interest in the land including the proposed bottom hole location or has a right to drill this well at this location pursuant to a contract with an owner of such a mineral or working interest, or to a voluntary pooling agreement or a compulsory pooling order heretofore entered by the division.

[Signature] 9/18/13
Signature Date
John Logemann 9-18-13
Printed Name
John Logemann
E-mail Address
john@enduranceresourcesllc.com

¹⁸ SURVEYOR CERTIFICATION

I hereby certify that the well location shown on this plat was plotted from field notes of actual surveys made by me or under my supervision, and that the same is true and correct to the best of my belief.

JULY 18, 2013
Date of Survey
[Signature]
Signature and Seal of Professional Surveyor
Certificate Number: FLEMONTE JARAMILLO, PLS 12797
SURVEY NO. 2087

ELL 9-18-2013

SEP 26 2013

District I

1625 N. French Dr., Hobbs, NM 88240
Phone:(575) 393-6161 Fax:(575) 393-0720

District II

811 S. First St., Artesia, NM 88210
Phone:(575) 748-1283 Fax:(575) 748-9720

District III

1000 Rio Brazos Rd., Aztec, NM 87410
Phone:(505) 334-6178 Fax:(505) 334-6170

District IV

1220 S. St Francis Dr., Santa Fe, NM 87505
Phone:(505) 476-3470 Fax:(505) 476-3462

State of New Mexico
Energy, Minerals and Natural
Resources
Oil Conservation Division
1220 S. St Francis Dr.
Santa Fe, NM 87505

Form C-102
August 1, 2011

Permit 173642

WELL LOCATION AND ACREAGE DEDICATION PLAT

1. API Number	2. Pool Code 14865	3. Pool Name CRUZ;BONE SPRING
4. Property Code	5. Property Name JAGUAR 18 STATE	6. Well No. 001H
7. OGRID No. 270329	8. Operator Name ENDURANCE RESOURCES LLC	9. Elevation 3716

10. Surface Location

UL - Lot D	Section 18	Township 23S	Range 33E	Lot Idn 1	Feet From 330	N/S Line N	Feet From 660	E/W Line W	County LEA
---------------	---------------	-----------------	--------------	--------------	------------------	---------------	------------------	---------------	---------------

11. Bottom Hole Location If Different From Surface

UL - Lot M	Section 18	Township 23S	Range 33E	Lot Idn 4	Feet From 330	N/S Line S	Feet From 660	E/W Line W	County LEA
12. Dedicated Acres 151.40	13. Joint or Infill			14. Consolidation Code N/A			15. Order No.		

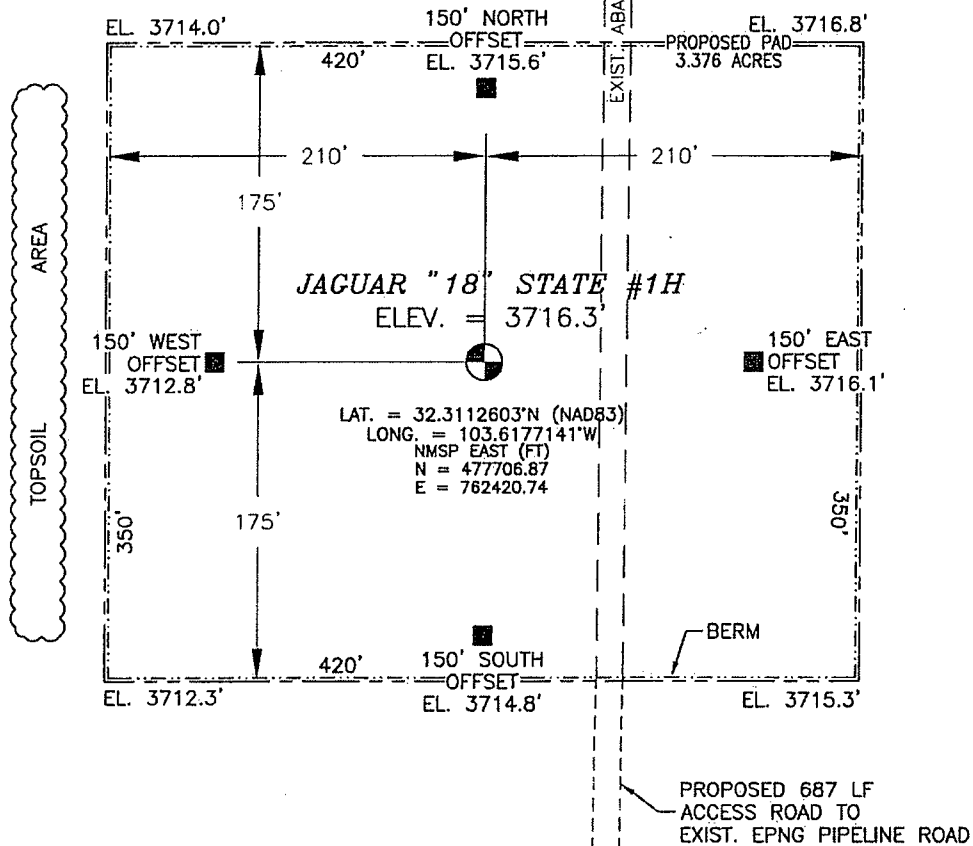
**NO ALLOWABLE WILL BE ASSIGNED TO THIS COMPLETION UNTIL ALL INTERESTS HAVE BEEN CONSOLIDATED
OR A NON-STANDARD UNIT HAS BEEN APPROVED BY THE DIVISION**

<div style="border: 1px solid black; width: 100%; height: 100%; position: relative;"> <div style="position: absolute; top: 10px; left: 10px; width: 30px; height: 30px; border: 1px solid black; text-align: center; line-height: 30px;">Ⓢ</div> <div style="position: absolute; bottom: 10px; right: 10px; width: 30px; height: 30px; border: 1px solid black; text-align: center; line-height: 30px;">Ⓢ</div> </div>	<div style="border: 1px solid black; padding: 5px;"> <p style="text-align: center; margin: 0;">OPERATOR CERTIFICATION</p> <p style="margin: 5px 0;"><i>I hereby certify that the information contained herein is true and complete to the best of my knowledge and belief, and that this organization either owns a working interest or unleased mineral interest in the land including the proposed bottom hole location(s) or has a right to drill this well at this location pursuant to a contract with an owner of such a mineral or working interest, or to a voluntary pooling agreement or a compulsory pooling order heretofore entered by the division.</i></p> <p>E-Signed By: _____</p> <p>Title: _____</p> <p>Date: _____</p> </div> <div style="border: 1px solid black; padding: 5px; margin-top: 10px;"> <p style="text-align: center; margin: 0;">SURVEYOR CERTIFICATION</p> <p style="margin: 5px 0;"><i>I hereby certify that the well location shown on this plat was plotted from field notes of actual surveys made by me or under my supervision, and that the same is true and correct to the best of my belief.</i></p> <p>Surveyed By: Filimont Jaramillo</p> <p>Date of Survey: 7/18/2013</p> <p>Certificate Number: 12797</p> </div>
--	---

SECTION 18, TOWNSHIP 23 SOUTH, RANGE 33 EAST, N.M.P.M.
LEA COUNTY, STATE OF NEW MEXICO
SITE MAP

NOTE: LATITUDE AND LONGITUDE COORDINATES ARE SHOWN USING THE NORTH AMERICAN DATUM OF 1983 (NAD83). LISTED NEW MEXICO STATE PLANE EAST COORDINATES ARE GRID (NAD83). BASIS OF BEARING AND DISTANCES USED ARE, NEW MEXICO STATE PLANE EAST COORDINATES MODIFIED TO THE SURFACE

SEC. 7
SEC. 18



0 10 50 100 200

SCALE 1" = 100'

DIRECTIONS TO LOCATION

FROM THE INTERSECTION OF STATE HIGHWAY 128 AND DELAWARE BASIN ROAD GO NORTH ON DELAWARE BASIN ROAD APPROX. 6.0 MILES TO A LEASE ROAD ON LEFT (WEST) TURN WEST GO APPROX. 6.1 MILES, ROAD TURNS RIGHT (NORTHEAST) GO NORTHEAST APPROX. 0.4 MILES, ROAD TURNS LEFT (NORTHWEST) GO NORTHWEST APPROX. 0.4 MILES TO EXISTING EPNG PIPELINE ROAD, ON LEFT (WEST) OF EPNG PIPELINE ROAD IS AN EXISTING ABANDON LEASE ROAD, GO NORTH ON ABANDON LEASE ROAD APPROX. 0.1 MILES TO LOCATION.

ENDURANCE RESOURCES, LLC
JAGUAR "18" STATE #1H
LOCATED 330 FT. FROM THE NORTH LINE
AND 660 FT. FROM THE WEST LINE OF
SECTION 18, TOWNSHIP 23 SOUTH,
RANGE 33 EAST, N.M.P.M.
LEA COUNTY, STATE OF NEW MEXICO

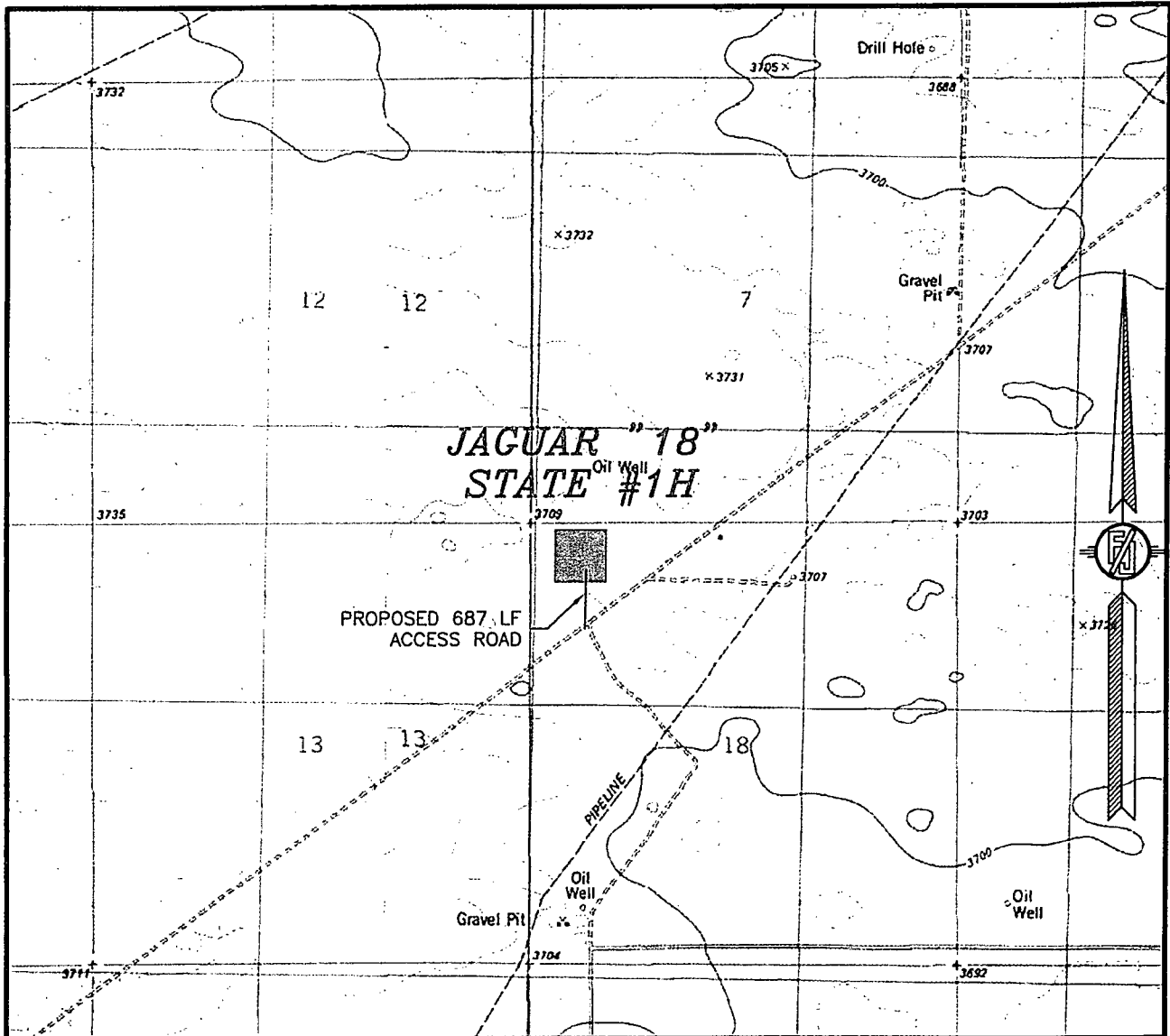
JULY 18, 2013

SURVEY NO. 2087

MADRON SURVEYING, INC. 301 SOUTH CANAL (575) 234-3341

CARLSBAD, NEW MEXICO

SECTION 18, TOWNSHIP 23 SOUTH, RANGE 33 EAST, N.M.P.M.
LEA COUNTY, STATE OF NEW MEXICO
LOCATION VERIFICATION MAP



USGS QUAD MAP:
TIP TOP WELLS

NOT TO SCALE

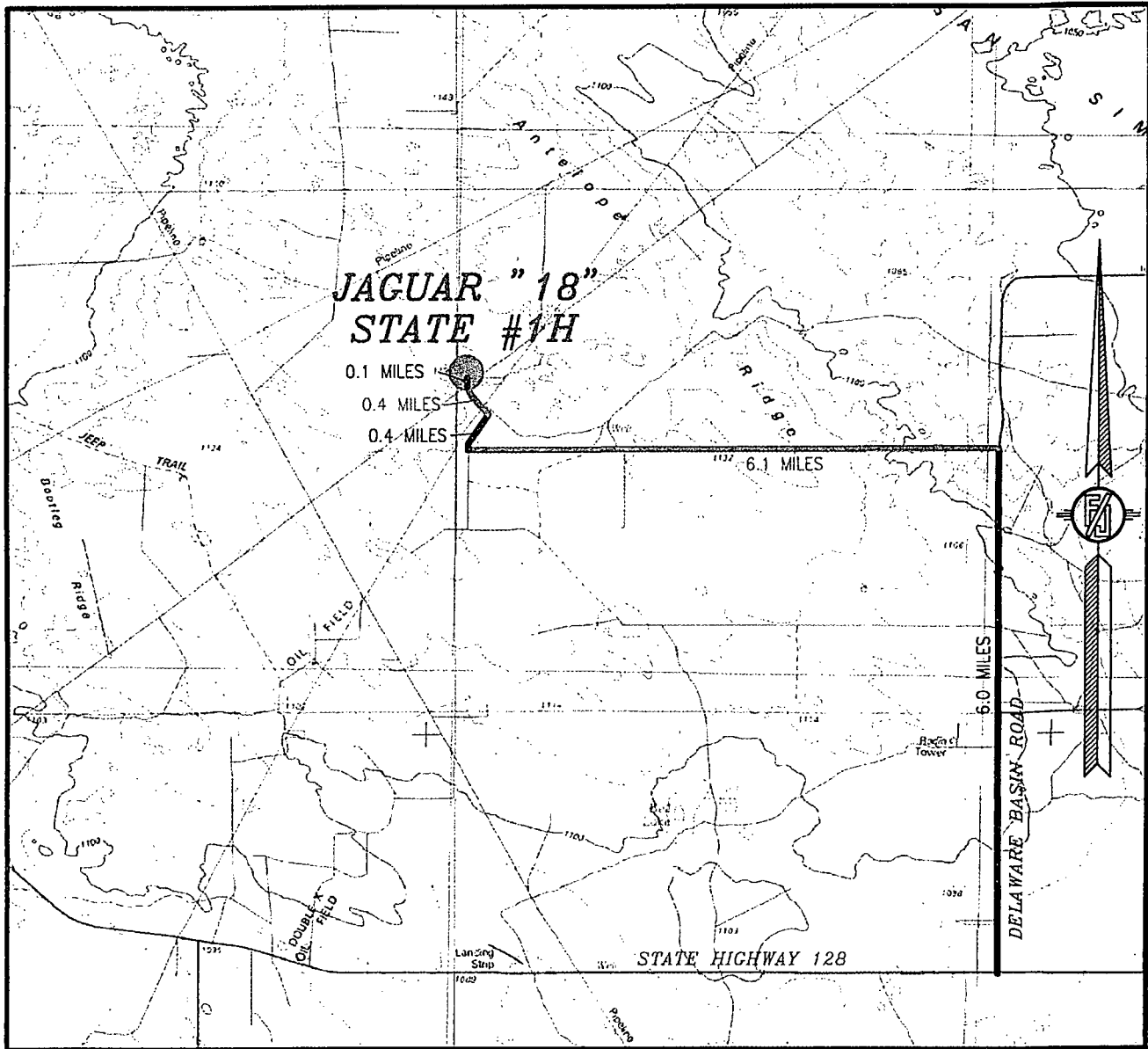
ENDURANCE RESOURCES, LLC
JAGUAR "18" STATE #1H
LOCATED 330 FT. FROM THE NORTH LINE
AND 660 FT. FROM THE WEST LINE OF
SECTION 18, TOWNSHIP 23 SOUTH,
RANGE 33 EAST, N.M.P.M.
LEA COUNTY, STATE OF NEW MEXICO

JULY 18, 2013

SURVEY NO. 2087

MADRON SURVEYING, INC. 301 SOUTH CANAL (575) 234-3341 CARLSBAD, NEW MEXICO

SECTION 18, TOWNSHIP 23 SOUTH, RANGE 33 EAST, N.M.P.M.
LEA COUNTY, STATE OF NEW MEXICO
VICINITY MAP



NOT TO SCALE

ENDURANCE RESOURCES, LLC
JAGUAR "18" STATE #1H
LOCATED 330 FT. FROM THE NORTH LINE
AND 660 FT. FROM THE WEST LINE OF
SECTION 18, TOWNSHIP 23 SOUTH,
RANGE 33 EAST, N.M.P.M.
LEA COUNTY, STATE OF NEW MEXICO

JULY 18, 2013

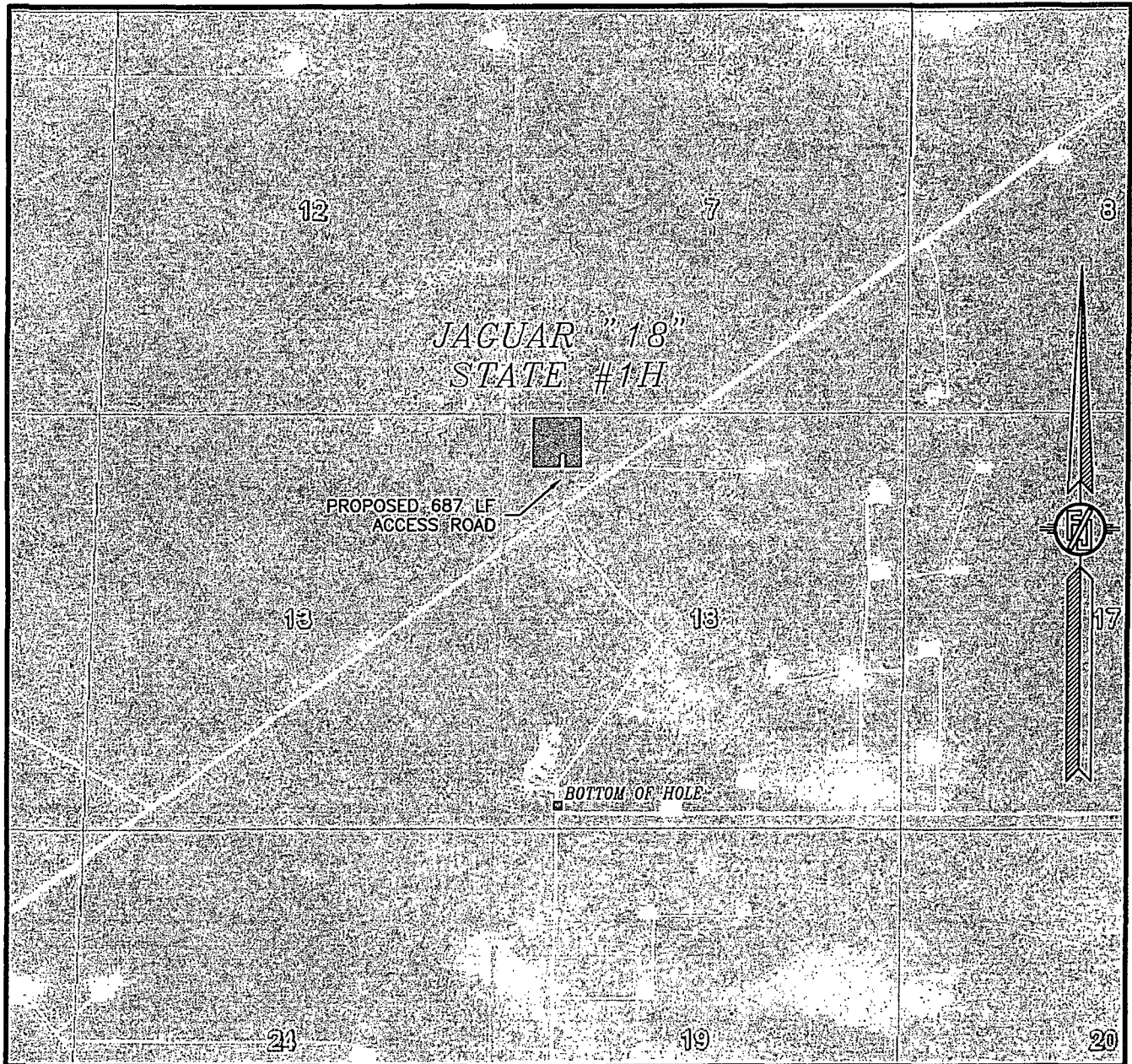
DIRECTIONS TO LOCATION

FROM THE INTERSECTION OF STATE HIGHWAY 128 AND DELAWARE BASIN ROAD GO NORTH ON DELAWARE BASIN ROAD APPROX. 6.0 MILES TO A LEASE ROAD ON LEFT (WEST) TURN WEST GO APPROX. 6.1 MILES, ROAD TURNS RIGHT (NORTHEAST) GO NORTHEAST APPROX. 0.4 MILES, ROAD TURNS LEFT (NORTHWEST) GO NORTHWEST APPROX. 0.4 MILES TO EXISTING EPNG PIPELINE ROAD, ON LEFT (WEST) OF EPNG PIPELINE ROAD IS AN EXISTING ABANDON LEASE ROAD, GO NORTH ON ABANDON LEASE ROAD APPROX. 0.1 MILES TO LOCATION.

MADRON SURVEYING, INC. 301 SOUTH CANAL (575) 234-3341

SURVEY NO. 2087
CARLSBAD, NEW MEXICO

SECTION 18, TOWNSHIP 23 SOUTH, RANGE 33 EAST, N.M.P.M.
LEA COUNTY, STATE OF NEW MEXICO
AERIAL PHOTO



NOT TO SCALE
AERIAL PHOTO:
GOOGLE EARTH
MARCH 2012

ENDURANCE RESOURCES, LLC
JAGUAR "18" STATE #1H
LOCATED 330 FT. FROM THE NORTH LINE
AND 660 FT. FROM THE WEST LINE OF
SECTION 18, TOWNSHIP 23 SOUTH,
RANGE 33 EAST, N.M.P.M.
LEA COUNTY, STATE OF NEW MEXICO

JULY 18, 2013

SURVEY NO. 2087

MADRON SURVEYING, INC. 301 SOUTH CANAL (575) 234-3341 CARLSBAD, NEW MEXICO