

District I  
1625 N. French Dr., Hobbs, NM 88240  
Phone: (575) 393-6161 Fax: (575) 393-0720  
District II  
811 S. First St., Artesia, NM 88210  
Phone: (575) 748-1283 Fax: (575) 748-9720  
District III  
1000 Rio Brazos Road, Aztec, NM 87410  
Phone: (505) 334-6178 Fax: (505) 334-6170  
District IV  
1220 S. St. Francis Dr., Santa Fe, NM 87505  
Phone: (505) 476-3460 Fax: (505) 476-3462

HOBBS OCD

SEP 20 2013

RECEIVED

State of New Mexico  
Energy, Minerals & Natural Resources Department  
OIL CONSERVATION DIVISION  
1220 South St. Francis Dr.  
Santa Fe, NM 87505

Form C-102  
Revised August 1, 2011  
Submit one copy to appropriate  
District Office  
☐ AMENDED REPORT

WELL LOCATION AND ACREAGE DEDICATION PLAT

<sup>1</sup> API Number <b>30-025-41429</b>	<sup>2</sup> Pool Code <b>14865</b>	<sup>3</sup> Pool Name <b>Cruz; Bone Spring</b>
<sup>4</sup> Property Code <b>40147</b>	<sup>5</sup> Property Name <b>JAGUAR 18 STATE</b>	<sup>6</sup> Well Number <b>3H</b>
<sup>7</sup> OGRID No. <b>270329</b>	<sup>8</sup> Operator Name <b>ENDURANCE RESOURCES, LLC</b>	<sup>9</sup> Elevation <b>3717.5</b>

<sup>10</sup> Surface Location

UL or lot no.	Section	Township	Range	Lot Idn	Feet from the	North/South line	Feet from the	East/West line	County
<b>B</b>	<b>18</b>	<b>23 S</b>	<b>33 E</b>		<b>301</b>	<b>NORTH</b>	<b>2189</b>	<b>EAST</b>	<b>LEA</b>

<sup>11</sup> Bottom Hole Location If Different From Surface

UL or lot no.	Section	Township	Range	Lot Idn	Feet from the	North/South line	Feet from the	East/West line	County
<b>O</b>	<b>18</b>	<b>23 S</b>	<b>33 E</b>		<b>330</b>	<b>SOUTH</b>	<b>1980</b>	<b>EAST</b>	<b>LEA</b>

<sup>12</sup> Dedicated Acres <b>160</b>	<sup>13</sup> Joint or Infill	<sup>14</sup> Consolidation Code	<sup>15</sup> Order No.
---	-------------------------------	----------------------------------	-------------------------

No allowable will be assigned to this completion until all interests have been consolidated or a non-standard unit has been approved by the division.

<p>N89°45'26"E 2603.80 FT</p> <p>NW CORNER SEC. 18 LAT. = 32.3121717°N LONG. = 103.6198502°W NMSP EAST (FT) N = 478034.05 E = 761758.59</p> <p>LOT 1</p> <p>LOT 2</p> <p>W Q CORNER SEC. 18 LAT. = 32.3049270°N LONG. = 103.6198485°W NMSP EAST (FT) N = 475398.44 E = 761776.64</p> <p>LOT 3</p> <p>NOTE: LATITUDE AND LONGITUDE COORDINATES ARE SHOWN USING THE NORTH AMERICAN DATUM OF 1983 (NAD83). LISTED NEW MEXICO STATE PLANE EAST COORDINATES ARE GRID (NAD83). BASIS OF BEARING AND DISTANCES USED ARE NEW MEXICO STATE PLANE EAST COORDINATES MODIFIED TO THE SURFACE.</p> <p>LOT 4</p> <p>SW CORNER SEC. 18 LAT. = 32.2976573°N LONG. = 103.6198477°W NMSP EAST (FT) N = 472753.76 E = 761794.48</p> <p>S Q CORNER SEC. 18 LAT. = 32.2976485°N LONG. = 103.6115248°W NMSP EAST (FT) N = 472767.77 E = 764366.22</p>		<p>N89°48'26"E 2603.80 FT</p> <p>DNF</p> <p>2189'</p> <p>SURFACE LOCATION</p> <p>JAGUAR "18" STATE #3H ELEV. = 3717.5' LAT. = 32.3113228°N (NAD83) LONG. = 103.6100809°W NMSP EAST (FT) N = 477745.45 E = 764778.83</p> <p>BOTTOM OF HOLE LAT. = 32.2988608°N LONG. = 103.6093951°W NMSP EAST (FT) N = 473104.09 E = 765022.05</p> <p>BOTTOM OF HOLE</p> <p>SE CORNER SEC. 18 LAT. = 32.2976371°N LONG. = 103.6029777°W NMSP EAST (FT) N = 472781.48 E = 767007.27</p> <p>1980'</p> <p>S89°41'16"W 2572.31 FT</p> <p>S89°42'09"W 2641.63 FT</p>	<p><sup>17</sup> OPERATOR CERTIFICATION</p> <p>I hereby certify that the information contained herein is true and complete to the best of my knowledge and belief, and that this organization either owns a working interest or unleased mineral interest in the land including the proposed bottom hole location or has a right to drill this well at this location pursuant to a contract with an owner of such a mineral or working interest, or to a voluntary pooling agreement or a compulsory pooling order heretofore entered by the division.</p> <p><i>[Signature]</i> 9-18-13 Signature Date</p> <p>Printed Name <b>John Logemann</b></p> <p>E-mail Address <b>ohn@enduranceresourcesllc.com</b></p> <p><sup>18</sup> SURVEYOR CERTIFICATION</p> <p>I hereby certify that the well location shown on this plat was plotted from field notes of actual surveys made by me or under my supervision, and that the same is true and correct to the best of my belief.</p> <p>JULY 16, 2013 Date of Survey</p> <p><i>[Signature]</i> Signature and Seal of Professional Surveyor</p> <p>Certificate Number: <b>12797</b> SURVEY NO: 2089</p>
---	--	---	--

ELG 9-25-2013

SEP 26 2013

P.M.

**District I**1625 N. French Dr., Hobbs, NM 88240  
Phone:(575) 393-6161 Fax:(575) 393-0720**District II**811 S. First St., Artesia, NM 88210  
Phone:(575) 748-1283 Fax:(575) 748-9720**District III**1000 Rio Brazos Rd., Aztec, NM 87410  
Phone:(505) 334-6178 Fax:(505) 334-6170**District IV**1220 S. St Francis Dr., Santa Fe, NM 87505  
Phone:(505) 476-3470 Fax:(505) 476-3462

**State of New Mexico**  
**Energy, Minerals and Natural**  
**Resources**  
**Oil Conservation Division**  
**1220 S. St Francis Dr.**  
**Santa Fe, NM 87505**

Form C-102  
August 1, 2011

Permit 173661

**WELL LOCATION AND ACREAGE DEDICATION PLAT**

1. API Number	2. Pool Code 14865	3. Pool Name CRUZ,BONE SPRING
4. Property Code	5. Property Name Jaguar 18 State	6. Well No. 003H
7. OGRID No. 270329	8. Operator Name ENDURANCE RESOURCES LLC	9. Elevation 3718

**10. Surface Location**

UL - Lot B	Section 18	Township 23S	Range 33E	Lot Idn B	Feet From 301	N/S Line N	Feet From 2189	E/W Line E	County LEA
---------------	---------------	-----------------	--------------	--------------	------------------	---------------	-------------------	---------------	---------------

**11. Bottom Hole Location If Different From Surface**

UL - Lot O	Section 18	Township 23S	Range 33E	Lot Idn O	Feet From 330	N/S Line S	Feet From 1980	E/W Line E	County LEA
12. Dedicated Acres 160.00			13. Joint or Infill		14. Consolidation Code N/A			15. Order No.	

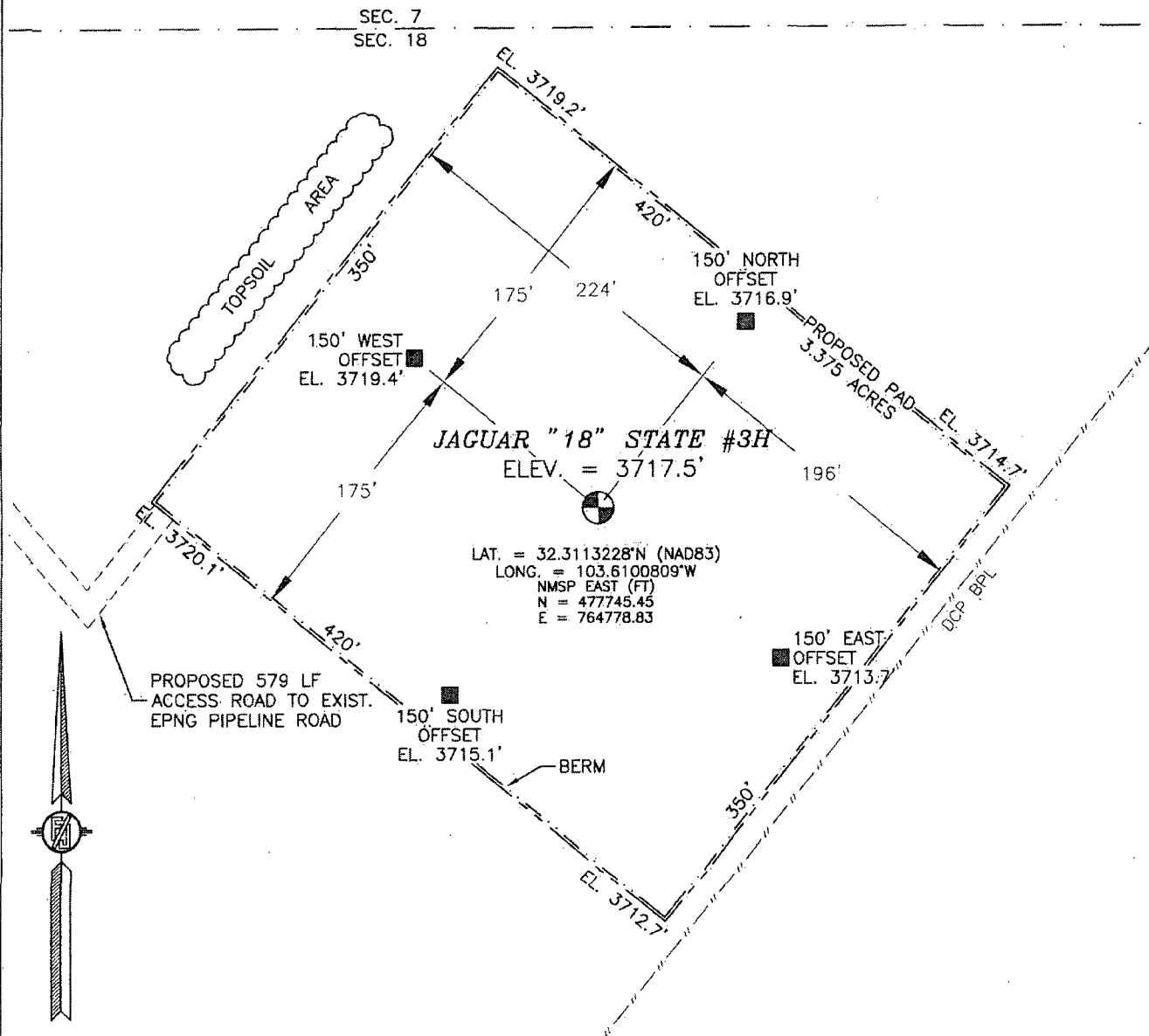
**NO ALLOWABLE WILL BE ASSIGNED TO THIS COMPLETION UNTIL ALL INTERESTS HAVE BEEN CONSOLIDATED  
OR A NON-STANDARD UNIT HAS BEEN APPROVED BY THE DIVISION**

<table border="1" style="width: 100%; border-collapse: collapse;"> <tr><td style="width: 25%; height: 40px;"></td><td style="width: 25%; height: 40px;"></td><td style="width: 25%; height: 40px; text-align: center;">ⓐ</td><td style="width: 25%; height: 40px;"></td></tr> <tr><td style="height: 40px;"></td><td style="height: 40px;"></td><td style="height: 40px;"></td><td style="height: 40px;"></td></tr> <tr><td style="height: 40px;"></td><td style="height: 40px;"></td><td style="height: 40px;"></td><td style="height: 40px;"></td></tr> <tr><td style="height: 40px;"></td><td style="height: 40px;"></td><td style="height: 40px; text-align: center;">ⓑ</td><td style="height: 40px;"></td></tr> </table>			ⓐ												ⓑ		<p style="text-align: center;"><b>OPERATOR CERTIFICATION</b></p> <p><i>I hereby certify that the information contained herein is true and complete to the best of my knowledge and belief, and that this organization either owns a working interest or unleased mineral interest in the land including the proposed bottom hole location(s) or has a right to drill this well at this location pursuant to a contract with an owner of such a mineral or working interest, or to a voluntary pooling agreement or a compulsory pooling order heretofore entered by the division.</i></p> <p>E-Signed By: Title: Date:</p> <hr/> <p style="text-align: center;"><b>SURVEYOR CERTIFICATION</b></p> <p><i>I hereby certify that the well location shown on this plat was plotted from field notes of actual surveys made by me or under my supervision, and that the same is true and correct to the best of my belief.</i></p> <p>Surveyed By:                      Filimon Jaramillo Date of Survey:                  7/16/2013 Certificate Number:              12797</p>
		ⓐ															
		ⓑ															

SECTION 18, TOWNSHIP 23 SOUTH, RANGE 33 EAST, N.M.P.M.  
LEA COUNTY, STATE OF NEW MEXICO

SITE MAP

NOTE: LATITUDE AND LONGITUDE COORDINATES ARE SHOWN USING THE NORTH AMERICAN DATUM OF 1983 (NAD83). LISTED NEW MEXICO STATE PLANE EAST COORDINATES ARE GRID (NAD83). BASIS OF BEARING AND DISTANCES USED ARE NEW MEXICO STATE PLANE EAST COORDINATES MODIFIED TO THE SURFACE



ENDURANCE RESOURCES, LLC  
JAGUAR "18" STATE #3H  
LOCATED 301 FT. FROM THE NORTH LINE  
AND 2189 FT. FROM THE EAST LINE OF  
SECTION 18, TOWNSHIP 23 SOUTH,  
RANGE 33 EAST, N.M.P.M.  
LEA COUNTY, STATE OF NEW MEXICO

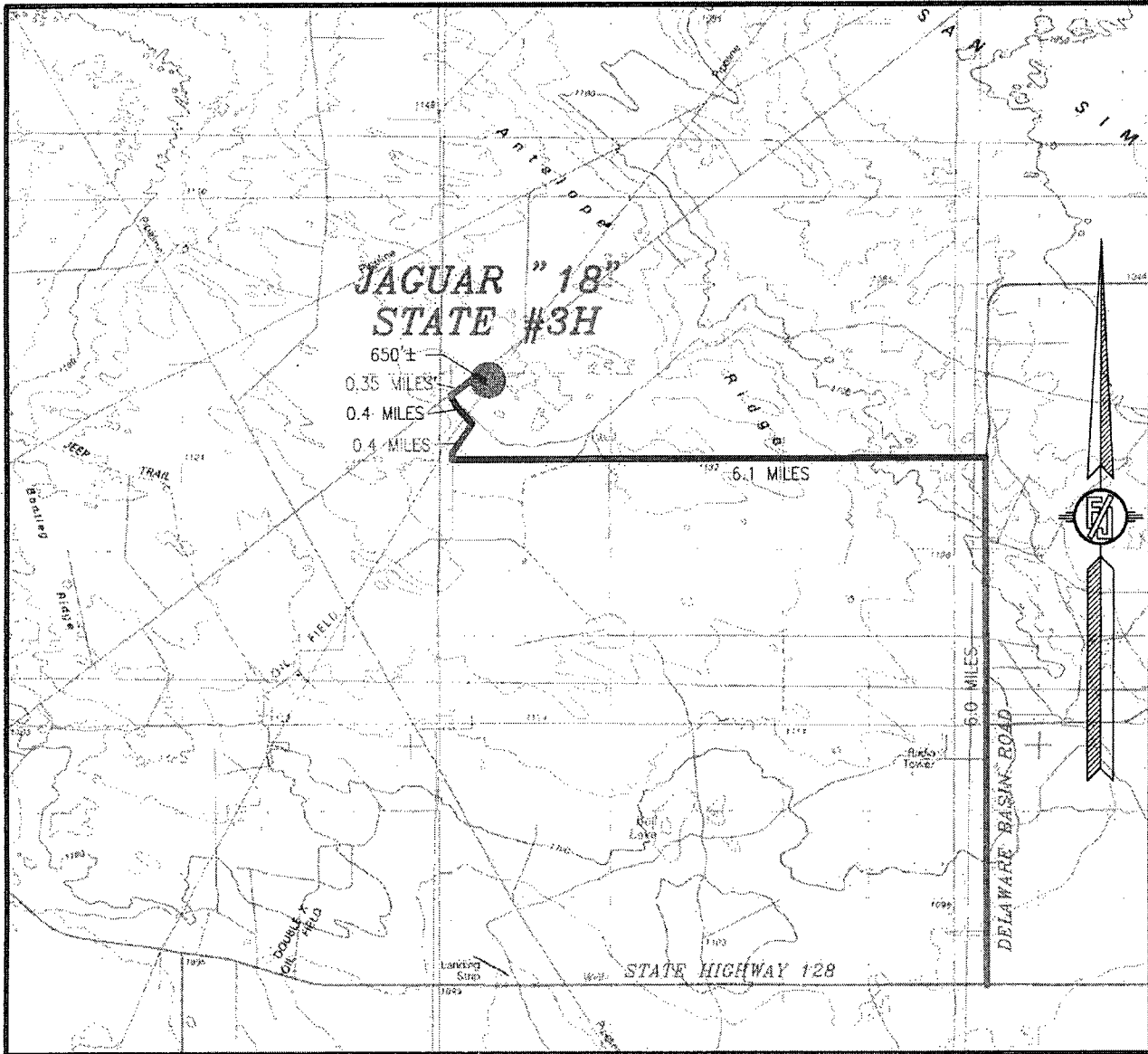
JULY 16, 2013

SURVEY NO. 2089

MADRON SURVEYING, INC. 301 SOUTH CANAL  
(575) 234-3341

CARLSBAD, NEW MEXICO

SECTION 18, TOWNSHIP 23 SOUTH, RANGE 33 EAST, N.M.P.M.  
LEA COUNTY, STATE OF NEW MEXICO  
VICINITY MAP



NOT TO SCALE

ENDURANCE RESOURCES, LLC  
**JAGUAR "18" STATE #3H**  
LOCATED 301 FT. FROM THE NORTH LINE  
AND 2189 FT. FROM THE EAST LINE OF  
SECTION 18, TOWNSHIP 23 SOUTH,  
RANGE 33 EAST, N.M.P.M.  
LEA COUNTY, STATE OF NEW MEXICO

JULY 16, 2013

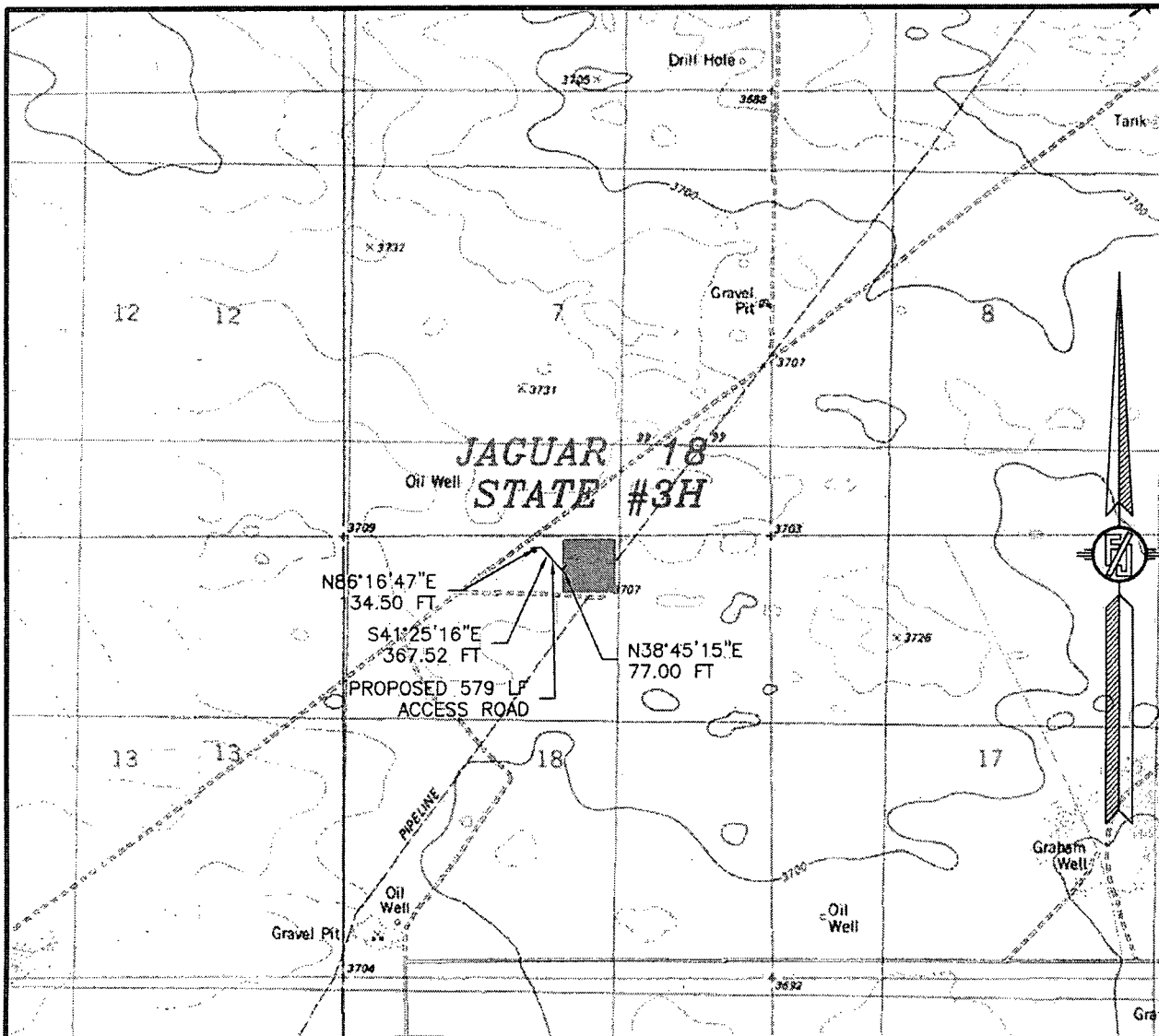
**DIRECTIONS TO LOCATION**

FROM THE INTERSECTION OF STATE HIGHWAY 128 AND DELAWARE BASIN ROAD GO NORTH ON DELAWARE BASIN ROAD APPROX. 6.0 MILES TO A LEASE ROAD ON LEFT (WEST) TURN WEST AT LEASE ROAD GO APPROX. 6.1 MILES, ROAD TURNS RIGHT (NORTH) GO NORTH APPROX. 0.4 MILES, ROAD TURNS LEFT (NORTHWEST) GO NORTHWEST APPROX. 0.4 MILES TO AN EXISTING EPNG PIPELINE ROAD, TURN RIGHT (NORTHEAST) GO NORTHEAST ON EXISTING EPNG PIPELINE ROAD APPROX. 0.35 MILES TO ROAD LATH WITH RED & WHITE FLAGGING. FOLLOW LATHS TO PI RIGHT LATH, GO EAST APPROX. 400'± TO PI LEFT LATH, LOCATION IS LEFT (NORTH) 250'.

MADRON SURVEYING, INC. 301 SOUTH CANAL (575) 234-3341

SURVEY NO. 2089  
CARLSBAD, NEW MEXICO

SECTION 18, TOWNSHIP 23 SOUTH, RANGE 33 EAST, N.M.P.M.  
LEA COUNTY, STATE OF NEW MEXICO  
LOCATION VERIFICATION MAP



USGS QUAD MAP:  
TIP TOP WELLS

NOT TO SCALE

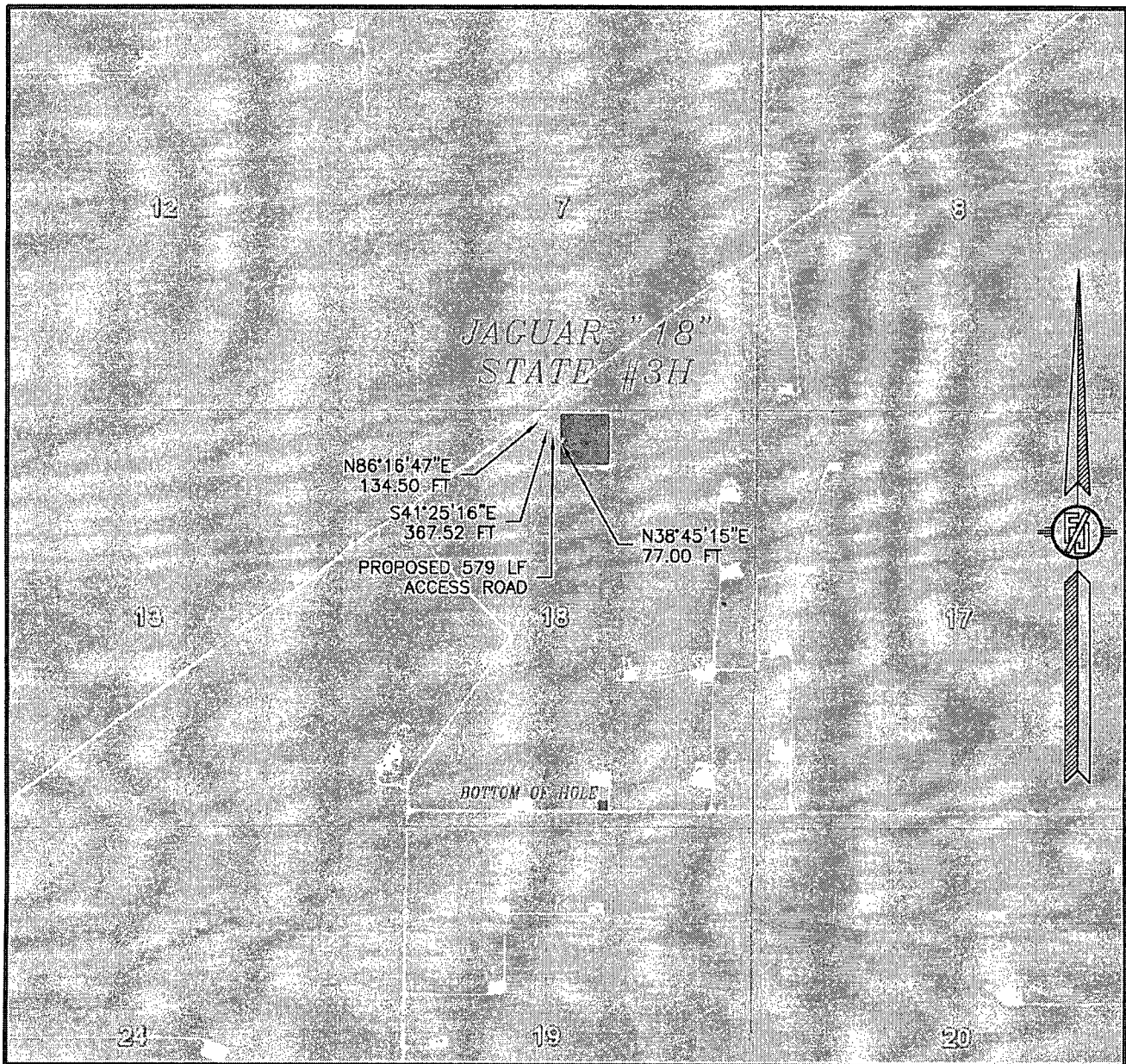
ENDURANCE RESOURCES, LLC  
**JAGUAR "18" STATE #3H**  
LOCATED 301 FT. FROM THE NORTH LINE  
AND 2189 FT. FROM THE EAST LINE OF  
SECTION 18, TOWNSHIP 23 SOUTH,  
RANGE 33 EAST, N.M.P.M.  
LEA COUNTY, STATE OF NEW MEXICO

JULY 16, 2013

SURVEY NO. 2089

MADRON SURVEYING, INC. 301 SOUTH CANAL CARLSBAD, NEW MEXICO  
(575) 234-3341

SECTION 18, TOWNSHIP 23 SOUTH, RANGE 33 EAST, N.M.P.M.  
LEA COUNTY, STATE OF NEW MEXICO  
**AERIAL PHOTO**



NOT TO SCALE  
AERIAL PHOTO:  
GOOGLE EARTH  
MARCH 2012

**ENDURANCE RESOURCES, LLC**  
**JAGUAR "18" STATE #3H**  
LOCATED 301 FT. FROM THE NORTH LINE  
AND 2189 FT. FROM THE EAST LINE OF  
SECTION 18, TOWNSHIP 23 SOUTH,  
RANGE 33 EAST, N.M.P.M.  
LEA COUNTY, STATE OF NEW MEXICO

JULY 16, 2013

SURVEY NO. 2089

MADRON SURVEYING, INC. 301 SOUTH CANAL CARLSBAD, NEW MEXICO  
(575) 234-3341