

District I
1625 N. French Dr., Hobbs, NM 88240
Phone: (575) 393-6161 Fax: (575) 393-0720
District II
511 S. First St., Artesia, NM 88210
Phone: (575) 748-1283 Fax: (575) 748-9720
District III
1000 Rio Brazos Road, Aztec, NM 87410
Phone: (505) 334-6178 Fax: (505) 334-6170
District IV
1220 S. St. Francis Dr., Santa Fe, NM 87505
Phone: (505) 476-3460 Fax: (505) 476-3462

State of New Mexico
Energy, Minerals & Natural Resources Department
OIL CONSERVATION DIVISION
1220 South St. Francis Dr.
Santa Fe, NM 87505

Form C-102
Revised August 1, 2011
Submit one copy to appropriate
District Office

SEP 20 2013

☐ AMENDED REPORT

RECEIVED

WELL LOCATION AND ACREAGE DEDICATION PLAT

¹ API Number 30-025-4(1430)		² Pool Code 14865		³ Pool Name Cruz; Bone Spring	
⁴ Property Code 40147		⁵ Property Name JAGUAR 18 STATE			⁶ Well Number 4H
⁷ OGRID No. 270329		⁸ Operator Name ENDURANCE RESOURCES, LLC			⁹ Elevation 3713.1
¹⁰ Surface Location					
UL or lot no. A	Section 18	Township 23 S	Range 33 E	Lot Idn	Feet from the 330
		North/South line NORTH		Feet from the 660	East/West line EAST
		County LEA			
¹¹ Bottom Hole Location If Different From Surface					
UL or lot no. P	Section 18	Township 23 S	Range 33 E	Lot Idn	Feet from the 330
		North/South line SOUTH		Feet from the 660	East/West line EAST
		County LEA			
¹² Dedicated Acres 1.60		¹³ Joint or Infill		¹⁴ Consolidation Code	
				¹⁵ Order No.	

No allowable will be assigned to this completion until all interests have been consolidated or a non-standard unit has been approved by the division.

<p>N89°45'26"E 2603.80 FT</p> <p>NW CORNER SEC. 18 LAT. = 32.3121717°N LONG. = 103.6198502°W NMSP EAST (FT) N = 478034.05 E = 761758.59</p> <p>LOT 1</p> <p>LOT 2</p> <p>W Q CORNER SEC. 18 LAT. = 32.3049270°N LONG. = 103.6198485°W NMSP EAST (FT) N = 475398.44 E = 761776.64</p> <p>LOT 3</p> <p>NOTE: LATITUDE AND LONGITUDE COORDINATES ARE SHOWN USING THE NORTH AMERICAN DATUM OF 1983 (NAD83). LISTED NEW MEXICO STATE PLANE EAST COORDINATES ARE GRID (NAD83). BASIS OF BEARING AND DISTANCES USED ARE NEW MEXICO STATE PLANE EAST COORDINATES MODIFIED TO THE SURFACE.</p> <p>LOT 4</p> <p>SW CORNER SEC. 18 LAT. = 32.2976573°N LONG. = 103.6198477°W NMSP EAST (FT) N = 472753.76 E = 761794.48</p> <p>S Q CORNER SEC. 18 LAT. = 32.2976485°N LONG. = 103.6115248°W NMSP EAST (FT) N = 472767.77 E = 764366.22</p> <p>S89°41'16"W 2572.31 FT</p>		<p>N89°45'26"E 2603.80 FT</p> <p>NE CORNER SEC. 18 LAT. = 32.3121359°N LONG. = 103.6029979°W NMSP EAST (FT) N = 478056.11 E = 766865.07</p> <p>LOT 5</p> <p>JAGUAR "18" STATE #4H ELEV. = 3713.1 LAT. = 32.3112336°N (NAD83) LONG. = 103.6051327°W NMSP EAST (FT) N = 477723.34 E = 766307.79</p> <p>E Q CORNER SEC. 18 LAT. = 32.3048969°N LONG. = 103.6029880°W NMSP EAST (FT) N = 475422.58 E = 766986.08</p> <p>LOT 6</p> <p>BOTTOM OF HOLE LAT. = 32.2985551°N LONG. = 103.6051232°W NMSP EAST (FT) N = 473110.94 E = 766342.04</p> <p>BOTTOM OF HOLE</p> <p>SE CORNER SEC. 18 LAT. = 32.2976371°N LONG. = 103.6029777°W NMSP EAST (FT) N = 472781.48 E = 767007.27</p> <p>S89°42'09"W 2641.63 FT</p>	<p>¹⁷ OPERATOR CERTIFICATION</p> <p>I hereby certify that the information contained herein is true and complete to the best of my knowledge and belief, and that this organization either owns a working interest or unleased mineral interest in the land including the proposed bottom hole location or has a right to drill this well in this location pursuant to a contract with an owner of such a mineral or working interest, or to a voluntary pooling agreement or a compulsory pooling order heretofore entered by the division.</p> <p><i>John Logemann</i> 9-18-13 Signature Date</p> <p>Printed Name John Logemann</p> <p>E-mail Address john@enduranceresourcesllc.com</p> <p>¹⁸ SURVEYOR CERTIFICATION</p> <p>I hereby certify that the well location shown on this plat was plotted from field notes of actual surveys made by me or under my supervision, and that the same is true and correct to the best of my belief.</p> <p>JULY 16, 2013 Date of Survey</p> <p><i>James P. Taramillo</i> Signature and Seal of Professional Surveyor</p> <p>Certificate Number: PLM1001P-TARAMILLO-PLS 12797 LAND SURVEY NO. 2090</p>
---	--	--	--

ELG 9-25-2013

SEP 26 2013

District I
1625 N. French Dr., Hobbs, NM 88240
Phone:(575) 393-6161 Fax:(575) 393-0720
District II
811 S. First St., Artesia, NM 88210
Phone:(575) 748-1283 Fax:(575) 748-9720
District III
1000 Rio Brazos Rd., Aztec, NM 87410
Phone:(505) 334-6178 Fax:(505) 334-6170
District IV
1220 S. St Francis Dr., Santa Fe, NM 87505
Phone:(505) 476-3470 Fax:(505) 476-3462

State of New Mexico
Energy, Minerals and Natural
Resources
Oil Conservation Division
1220 S. St Francis Dr.
Santa Fe, NM 87505

Form C-102
August 1, 2011
Permit 173662

WELL LOCATION AND ACREAGE DEDICATION PLAT

1. API Number	2. Pool Code 14865	3. Pool Name CRUZ;BONE SPRING
4. Property Code	5. Property Name Jaguar 18 State	6. Well No. 004H
7. OGRID No. 270329	8. Operator Name ENDURANCE RESOURCES LLC	9. Elevation 3713

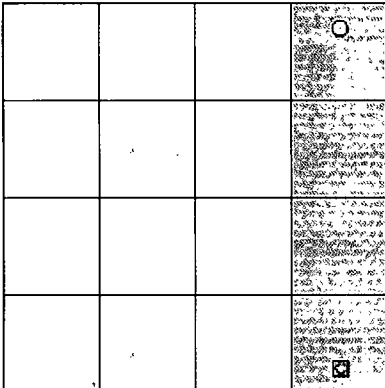
10. Surface Location

UL - Lot A	Section 18	Township 23S	Range 33E	Lot Idn	Feet From 330	N/S Line N	Feet From 660	E/W Line E	County LEA
---------------	---------------	-----------------	--------------	------------	------------------	---------------	------------------	---------------	---------------

11. Bottom Hole Location If Different From Surface

P. Bottom Hole Location if Different From Surface									
UL - Lot	Section	Township	Range	Lot Idn	Feet From	N/S Line	Feet From	E/W Line	County
P	18	23S	33E	P	330	S	660	E	LEA
12. Dedicated Acres 160.00			13. Joint or Infill		14. Consolidation Code N/A			15. Order No.	

**NO ALLOWABLE WILL BE ASSIGNED TO THIS COMPLETION UNTIL ALL INTERESTS HAVE BEEN CONSOLIDATED
OR A NON-STANDARD UNIT HAS BEEN APPROVED BY THE DIVISION**

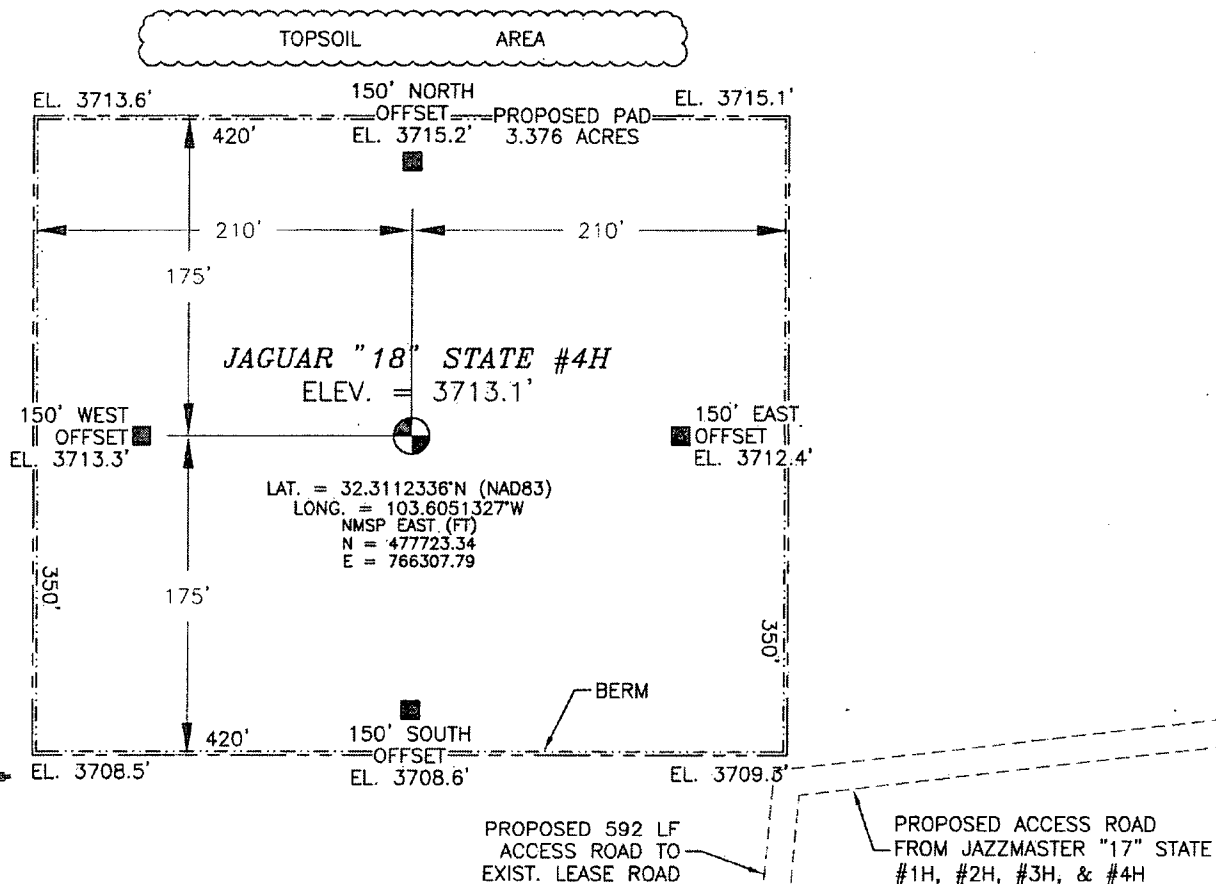
	<p style="text-align: center;">OPERATOR CERTIFICATION</p> <p><i>I hereby certify that the information contained herein is true and complete to the best of my knowledge and belief, and that this organization either owns a working interest or unleased mineral interest in the land including the proposed bottom hole location(s) or has a right to drill this well at this location pursuant to a contract with an owner of such a mineral or working interest, or to a voluntary pooling agreement or a compulsory pooling order heretofore entered by the division.</i></p> <p>E-Signed By: Title: Date:</p> <hr/> <p style="text-align: center;">SURVEYOR CERTIFICATION</p> <p><i>I hereby certify that the well location shown on this plat was plotted from field notes of actual surveys made by me or under my supervision, and that the same is true and correct to the best of my belief.</i></p> <p>Surveyed By: Filimon Jaramillo Date of Survey: 7/16/2013 Certificate Number: 12797</p>
--	---

SECTION 18, TOWNSHIP 23 SOUTH, RANGE 33 EAST, N.M.P.M.
LEA COUNTY, STATE OF NEW MEXICO

SITE MAP

NOTE: LATITUDE AND LONGITUDE COORDINATES ARE SHOWN USING THE NORTH AMERICAN DATUM OF 1983 (NAD83). LISTED NEW MEXICO STATE PLANE EAST COORDINATES ARE GRID (NAD83). BASIS OF BEARING AND DISTANCES USED ARE NEW MEXICO STATE PLANE EAST COORDINATES MODIFIED TO THE SURFACE

SEC. 7
SEC. 18



010 50 100 200

SCALE 1" = 100'

DIRECTIONS TO LOCATION

FROM THE INTERSECTION OF STATE HIGHWAY 128 AND DELAWARE BASIN ROAD GO NORTH ON DELAWARE BASIN ROAD APPROX. 6.0 MILE TO A LEASE ROAD ON LEFT (WEST) TURN WEST AT LEASE ROAD, GO APPROX. 5.35 MILES TO A LEASE ROAD ON RIGHT (NORTH) TURN NORTH GO APPROX. 0.86 MILES TO LOCATION.

ENDURANCE RESOURCES, LLC
JAGUAR "18" STATE #4H
LOCATED 330 FT. FROM THE NORTH LINE
AND 660 FT. FROM THE EAST LINE OF
SECTION 18, TOWNSHIP 23 SOUTH,
RANGE 33 EAST, N.M.P.M.
LEA COUNTY, STATE OF NEW MEXICO

JULY 16, 2013

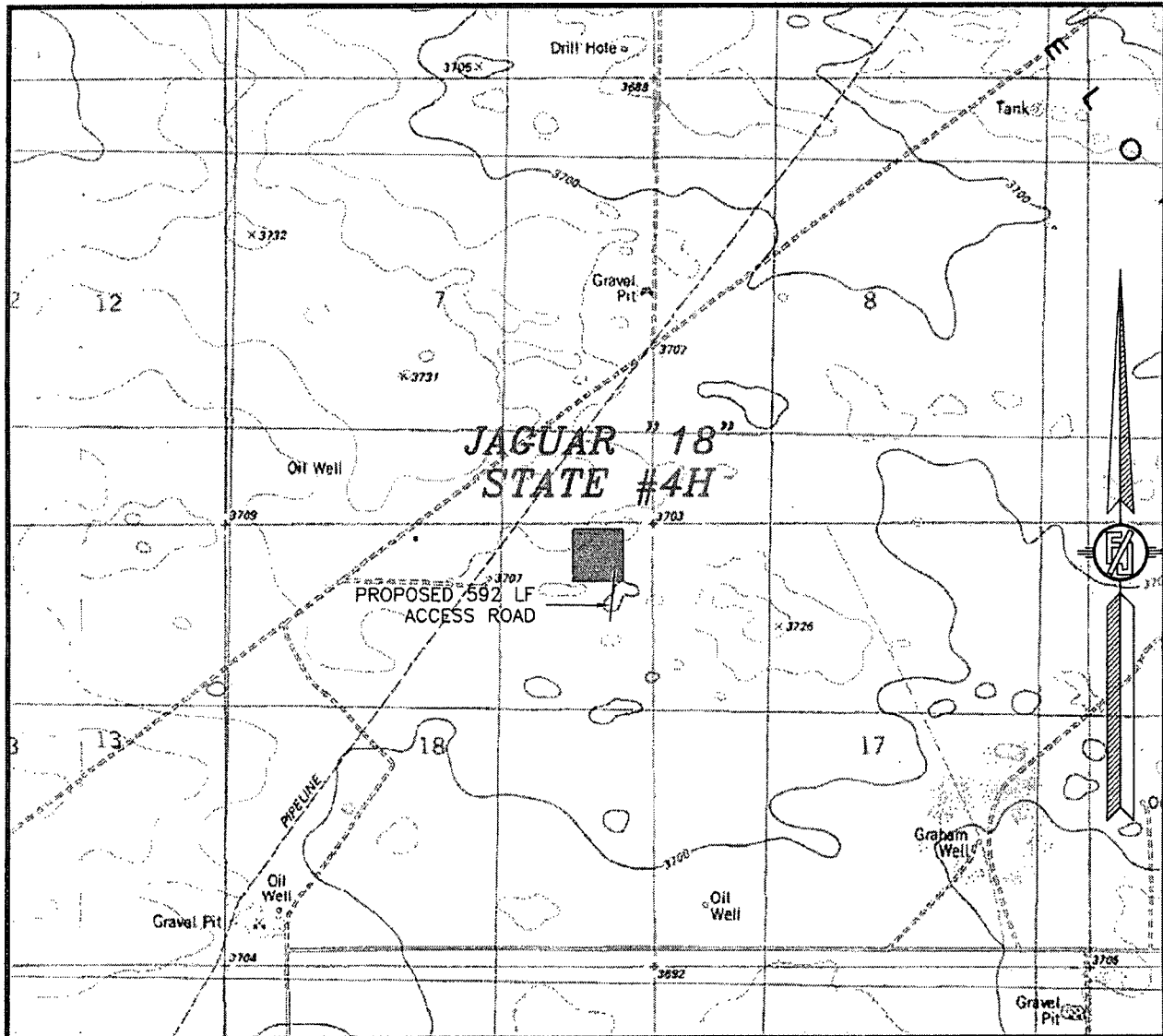
SURVEY NO. 2090

MADRON SURVEYING, INC.

301 SOUTH CANAL
(575) 234-3341

CARLSBAD, NEW MEXICO

SECTION 18, TOWNSHIP 23 SOUTH, RANGE 33 EAST, N.M.P.M.
LEA COUNTY, STATE OF NEW MEXICO
LOCATION VERIFICATION MAP



USGS QUAD MAP:
TIP TOP WELLS

NOT TO SCALE

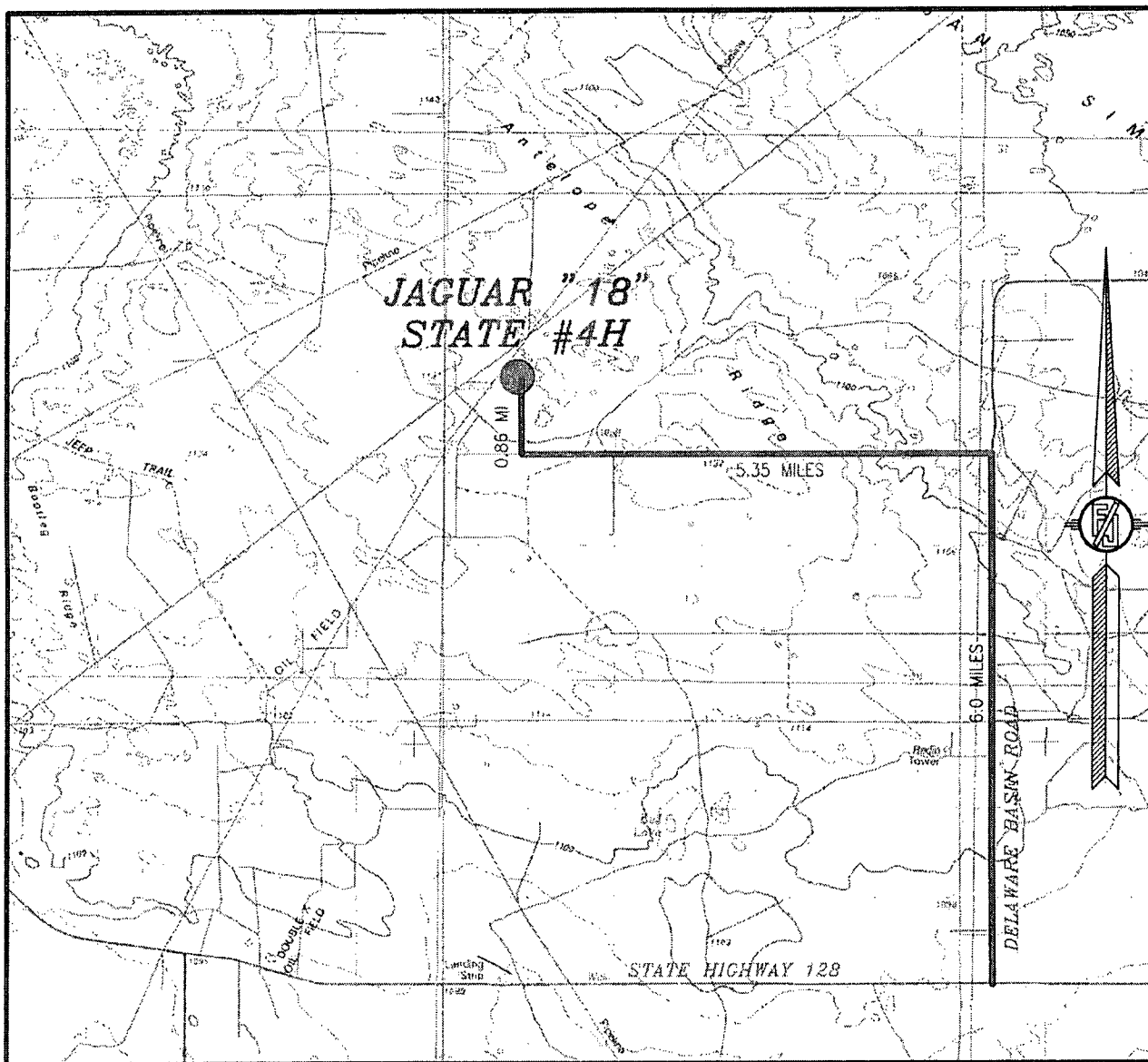
ENDURANCE RESOURCES, LLC
JAGUAR "18" STATE #4H
LOCATED 330 FT. FROM THE NORTH LINE
AND 660 FT. FROM THE EAST LINE OF
SECTION 18, TOWNSHIP 23 SOUTH,
RANGE 33 EAST, N.M.P.M.
LEA COUNTY, STATE OF NEW MEXICO

JULY 16, 2013

SURVEY NO. 2090

MADRON SURVEYING, INC. 301 SOUTH CANAL (575) 234-3341 CARLSBAD, NEW MEXICO

SECTION 18, TOWNSHIP 23 SOUTH, RANGE 33 EAST, N.M.P.M.
LEA COUNTY, STATE OF NEW MEXICO
VICINITY MAP



NOT TO SCALE

ENDURANCE RESOURCES, LLC
JAGUAR "18" STATE #4H
LOCATED 330 FT. FROM THE NORTH LINE
AND 660 FT. FROM THE EAST LINE OF
SECTION 18, TOWNSHIP 23 SOUTH,
RANGE 33 EAST, N.M.P.M.
LEA COUNTY, STATE OF NEW MEXICO

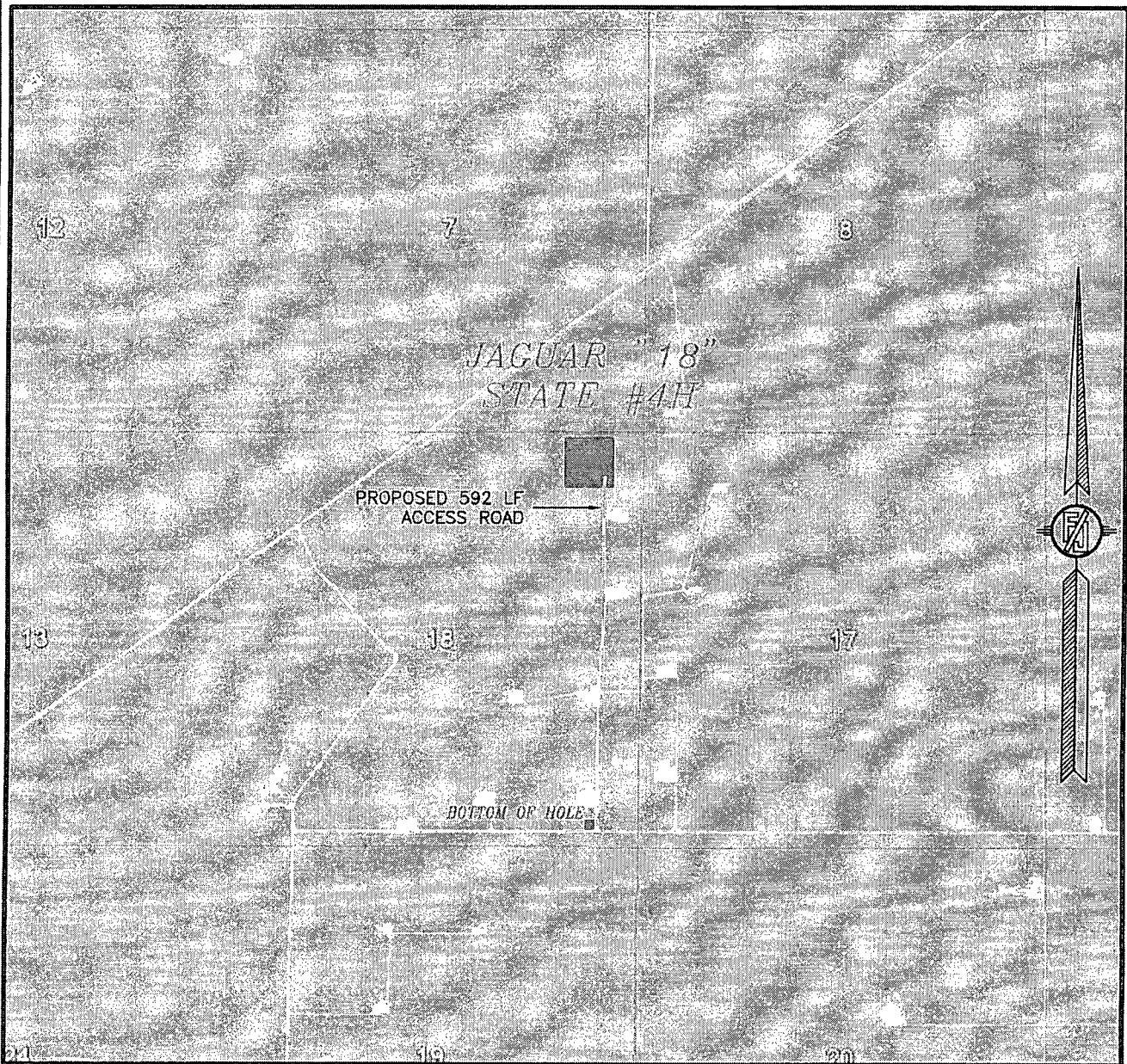
DIRECTIONS TO LOCATION

FROM THE INTERSECTION OF STATE HIGHWAY 128 AND DELAWARE BASIN ROAD GO NORTH ON DELAWARE BASIN ROAD APPROX. 6.0 MILE TO A LEASE ROAD ON LEFT (WEST) TURN WEST AT LEASE ROAD, GO APPROX. 5.35 MILES TO A LEASE ROAD ON RIGHT (NORTH) TURN NORTH GO APPROX. 0.86 MILES TO LOCATION.

JULY 16, 2013

MADRON SURVEYING, INC. 301 SOUTH CANAL CARLSBAD, NEW MEXICO
(575) 234-3341 SURVEY NO. 2090

SECTION 18, TOWNSHIP 23 SOUTH, RANGE 33 EAST, N.M.P.M.
LEA COUNTY, STATE OF NEW MEXICO
AERIAL PHOTO



NOT TO SCALE
AERIAL PHOTO:
GOOGLE EARTH
MARCH 2012

ENDURANCE RESOURCES, LLC
JAGUAR "18" STATE #4H
LOCATED 330 FT. FROM THE NORTH LINE
AND 660 FT. FROM THE EAST LINE OF
SECTION 18, TOWNSHIP 23 SOUTH,
RANGE 33 EAST, N.M.P.M.
LEA COUNTY, STATE OF NEW MEXICO

JULY 16, 2013

SURVEY NO. 2090

MADRON SURVEYING, INC. 301 SOUTH CANAL (575) 234-3341 CARLSBAD, NEW MEXICO