

DISTRICT I
1625 N. French Dr., Hobbs, NM 88240
Phone (575) 393-6161 Fax: (575) 393-0720

DISTRICT II
1301 W. Grand Avenue, Artesia, NM 88210
Phone (575) 746-1263 Fax: (575) 746-9720

DISTRICT III
1000 Rio Brazos Rd., Aztec, NM 87410
Phone (505) 334-6178 Fax: (505) 334-6170

DISTRICT IV
1220 S. St. Francis Dr., Santa Fe, NM 87505
Phone (505) 478-3460 Fax: (505) 478-3462

State of New Mexico
Energy, Minerals and Natural Resources Department

Form C-102
Revised August 1, 2011

Submit one copy to appropriate
District Office

HOBBS OCD

SEP 11 2013

RECEIVED

CONSERVATION DIVISION
1220 South St. Francis Dr.
Santa Fe, New Mexico 87505

WELL LOCATION AND ACREAGE DEDICATION PLAT

☐ AMENDED REPORT

API Number 30-025-40792	Pool Code 96674	Pool Name Triple X; Bone Spring, West
Property Code 39370	Property Name DOS EQUIS "12" FEDERAL COM	Well Number 3H
OGRID No: 162683	Operator Name CIMAREX ENERGY CO. OF COLORADO	Elevation 3612'

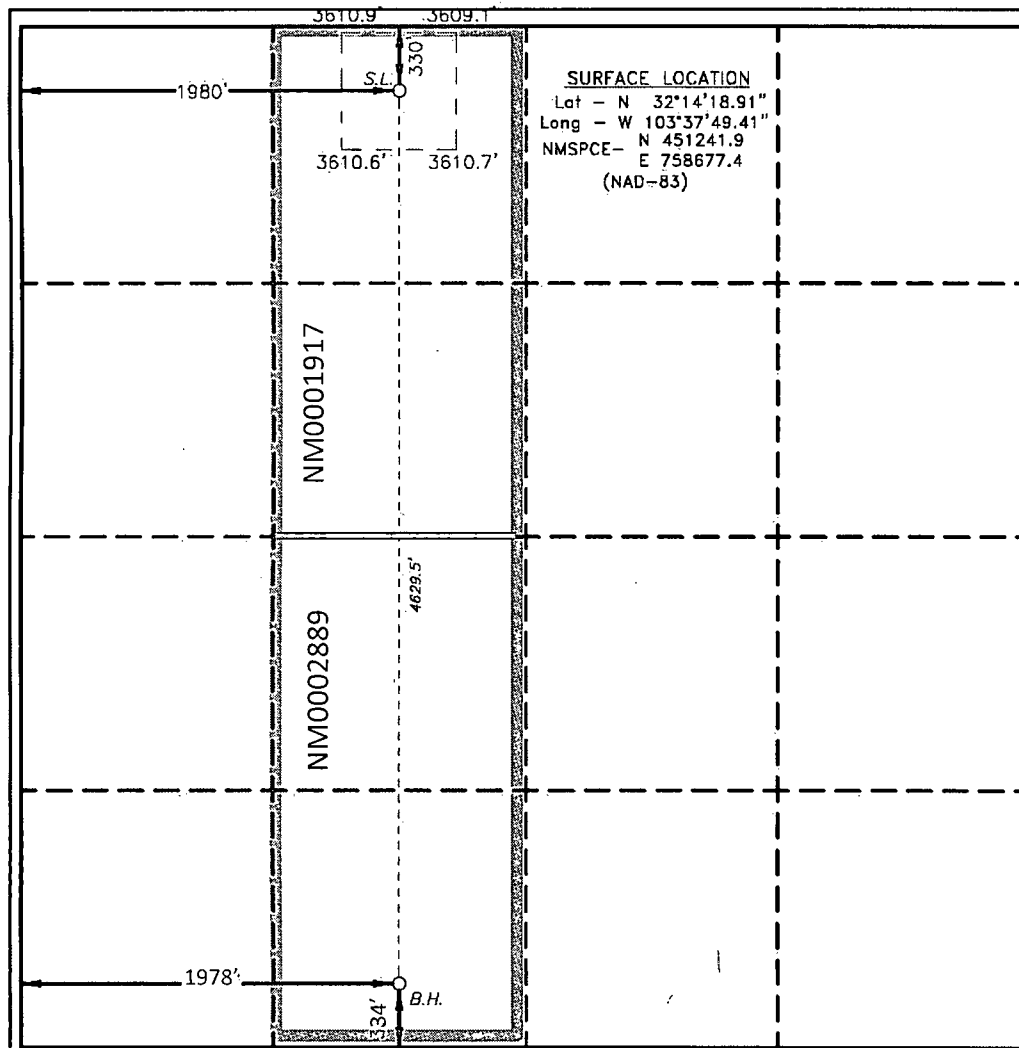
Surface Location

UL or lot No. C	Section 12	Township 24 S	Range 32 E	Lot Idn	Feet from the 330	North/South line NORTH	Feet from the 1980	East/West line WEST	County LEA
--------------------	---------------	------------------	---------------	---------	----------------------	---------------------------	-----------------------	------------------------	---------------

Bottom Hole Location If Different From Surface

UL or lot No. N	Section 12	Township 24 S	Range 32 E	Lot Idn	Feet from the 334 4955	North/South line SOUTH	Feet from the 1978 1995	East/West line WEST	County LEA
Dedicated Acres 160	Joint or Infill	Consolidation Code	Order No.						

NO ALLOWABLE WILL BE ASSIGNED TO THIS COMPLETION UNTIL ALL INTERESTS HAVE BEEN CONSOLIDATED
OR A NON-STANDARD UNIT HAS BEEN APPROVED BY THE DIVISION



OPERATOR CERTIFICATION

I hereby certify that the information contained herein is true and complete to the best of my knowledge and belief, and that this organization either owns a working interest or unleased mineral interest in the land including the proposed bottom hole location or has a right to drill this well at this location pursuant to a contract with an owner of such a mineral or working interest, or to a voluntary pooling agreement or a compulsory pooling order heretofore entered by the division.

Aricka Easterling 9/9/2013
Signature Date

Aricka Easterling

Printed Name

aeasterling@cimarex.com

Email Address

SURVEYOR CERTIFICATION

I hereby certify that the well location shown on this plat was plotted from field notes of actual surveys made by me or under my supervision, and that the same is true and correct to the best of my belief.

DECEMBER 23 2011

Date Surveyed
Signature of Professional Surveyor

Professional Surveyor

Certificate No.

7977

Basin Surveys

Certificate No. Gary L. Jones

7977

BASIN SURVEYS

OCT 03 2013 ELG 10-3-2013