

DISTRICT I
1625 N. French Dr., Hobbs, NM 88240
Phone (505) 393-6161 Fax: (505) 393-0720

DISTRICT II
811 S. First St., Artesia, NM 88210
Phone (505) 746-1283 Fax: (505) 746-9720

DISTRICT III
1000 Rio Brazos Rd., Aztec, NM 87410
Phone (505) 334-6178 Fax: (505) 334-6170

DISTRICT IV
1220 S. St. Francis Dr., Santa Fe, NM 87505
Phone (505) 476-3460 Fax: (505) 476-3462

HOBBS OCD

State of New Mexico
Energy, Minerals and Natural Resources Department

SEP 25 2013

OIL CONSERVATION DIVISION

1220 South St. Francis Dr.
RECEIVED Santa Fe, New Mexico 87505

Form C-102
Revised August 1, 2011

Submit one copy to appropriate
District Office

WELL LOCATION AND ACREAGE DEDICATION PLAT

☐ AMENDED REPORT

API Number 30-025-41431	Pool Code 22800	Pool Name EUMONT-YATES 7RIVERS QUEEN
Property Code 40151	Property Name STATE "26"	Well Number 1
OGRID No. 294619	Operator Name M&M ENERGY LLC	Elevation 3599'

Surface Location

UL or lot No.	Section	Township	Range	Lot Idn	Feet from the	North/South line	Feet from the	East/West line	County
B	26	21 S	35 E		601	NORTH	2018	EAST	LEA

Bottom Hole Location If Different From Surface

UL or lot No.	Section	Township	Range	Lot Idn	Feet from the	North/South line	Feet from the	East/West line	County

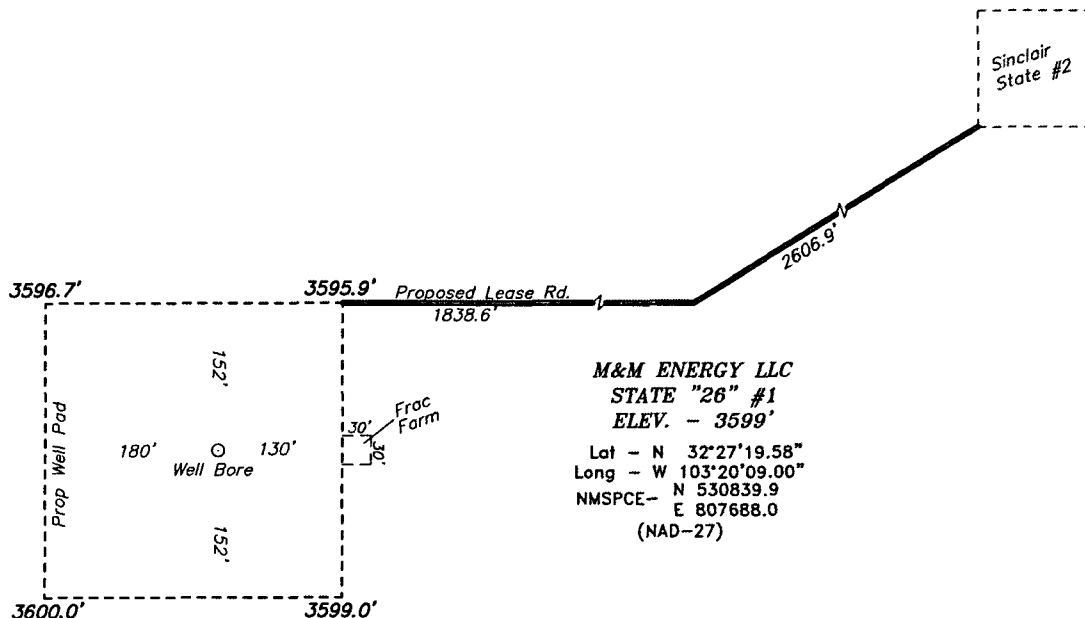
Dedicated Acres	Joint or Infill	Consolidation Code	Order No.
40			

NO ALLOWABLE WILL BE ASSIGNED TO THIS COMPLETION UNTIL ALL INTERESTS HAVE BEEN CONSOLIDATED
OR A NON-STANDARD UNIT HAS BEEN APPROVED BY THE DIVISION

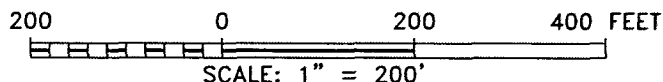
	OPERATOR CERTIFICATION I hereby certify that the information contained herein is true and complete to the best of my knowledge and belief, and that this organization either owns a working interest or unleased mineral interest in the land including the proposed bottom hole location or has a right to drill this well at this location pursuant to a contract with an owner of such a mineral or working interest, or to a voluntary pooling agreement or a compulsory pooling order heretofore entered by the division. Signature _____ Date _____ Joe T. Janica Printed Name joejanica@valornet.com Email Address
	SURVEYOR CERTIFICATION I hereby certify that the well location shown on this plat was plotted from field notes of actual surveys made by me or under my supervision, and that the same is true and correct to the best of my belief. SEPTEMBER 24 2013 Date Surveyed Signature & Seal of 1977 Professional Surveyor
	Certificate No. Gary L. Jones 7977 BASIN SURVEYS
	0' 500' 1000' 1500' 2000' SCALE: 1" = 1000' WO Num.: 29377

OCT 07 2013

**SECTION 26, TOWNSHIP 21 SOUTH, RANGE 35 EAST, N.M.P.M.,
LEA COUNTY,
NEW MEXICO.**



EUNICE, NM IS ±10 MILE TO THE EAST OF LOCATION.



Directions to Location:

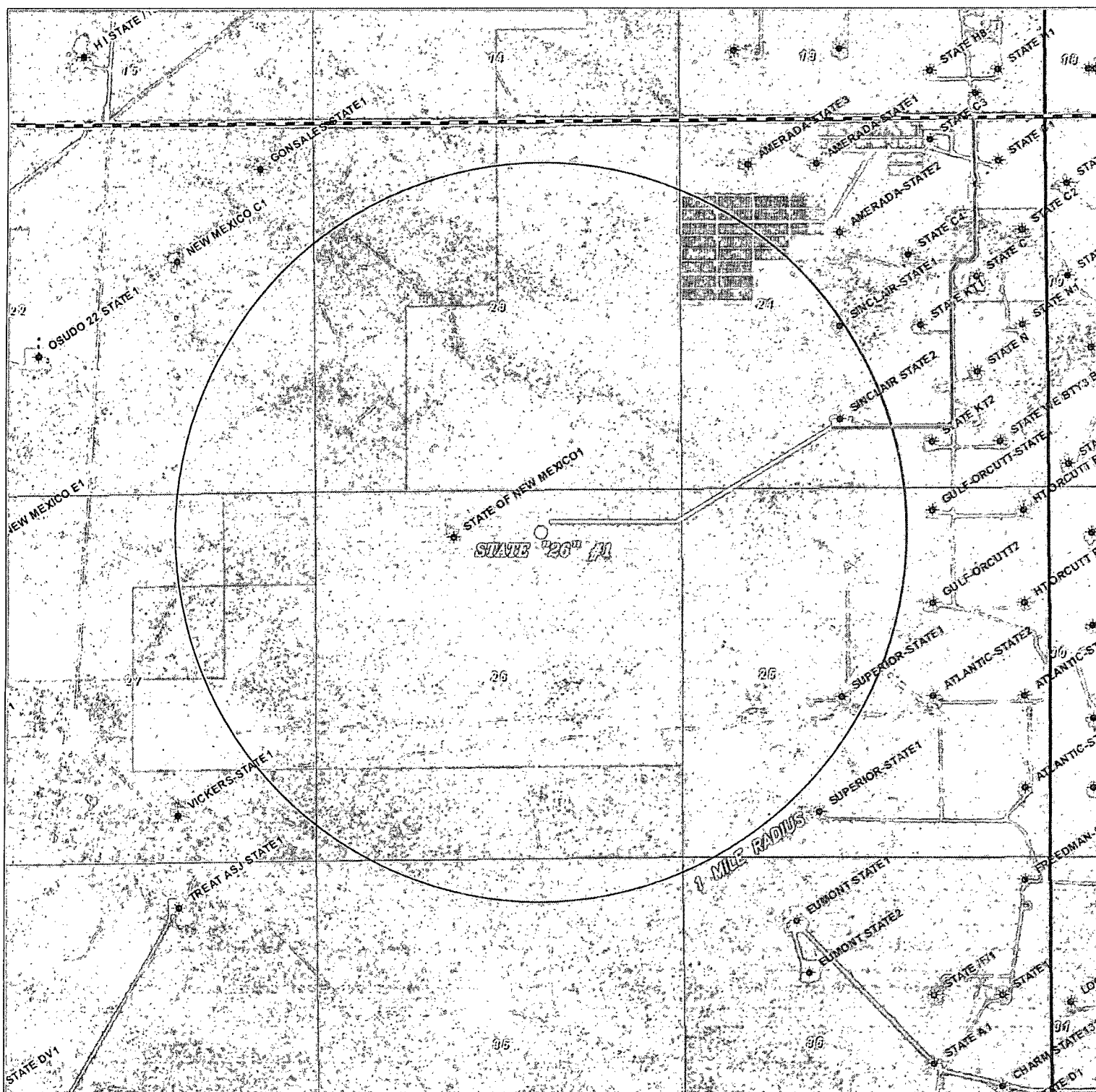
FROM THE JUNCTION OF STATE HWY 18 AND STATE HWY 176, GO WEST FOR 3.2 MILES TO LEASE ROAD, THEN SOUTH FOR 0.8 MILES, THEN WEST FOR 0.1 MILE TO EXISTING WELL PAD AND PROPOSED LEASE ROAD.

P.O. Box 1786 (575) 393-7316 - Office
1120 N. West County Rd. (575) 392-2206 - Fax
Hobbs, New Mexico 88241 basin-surveys.com

M&M ENERGY LLC

REF: STATE "26" #1 / WELL PAD TOPO

THE STATE "26" #1 LOCATED 601' FROM
THE NORTH LINE AND 2018' FROM THE EAST LINE OF
SECTION 26, TOWNSHIP 21 SOUTH, RANGE 35 EAST,
N.M.P.M., LEA COUNTY, NEW MEXICO.



STATE "26" #1

Located 601' FNL and 2018' FEL
Section 26, Township 21 South, Range 35 East,
N.M.P.M., Lea County, New Mexico.

basin
surveys
focused on excellence
in the oilfield

P.O. Box 1786
1120 N. West County Rd.
Hobbs, New Mexico 88241
(575) 393-7316 - Office
(575) 392-2206 - Fax
basinsurveys.com

0' 1000' 2000' 3000' 4000'

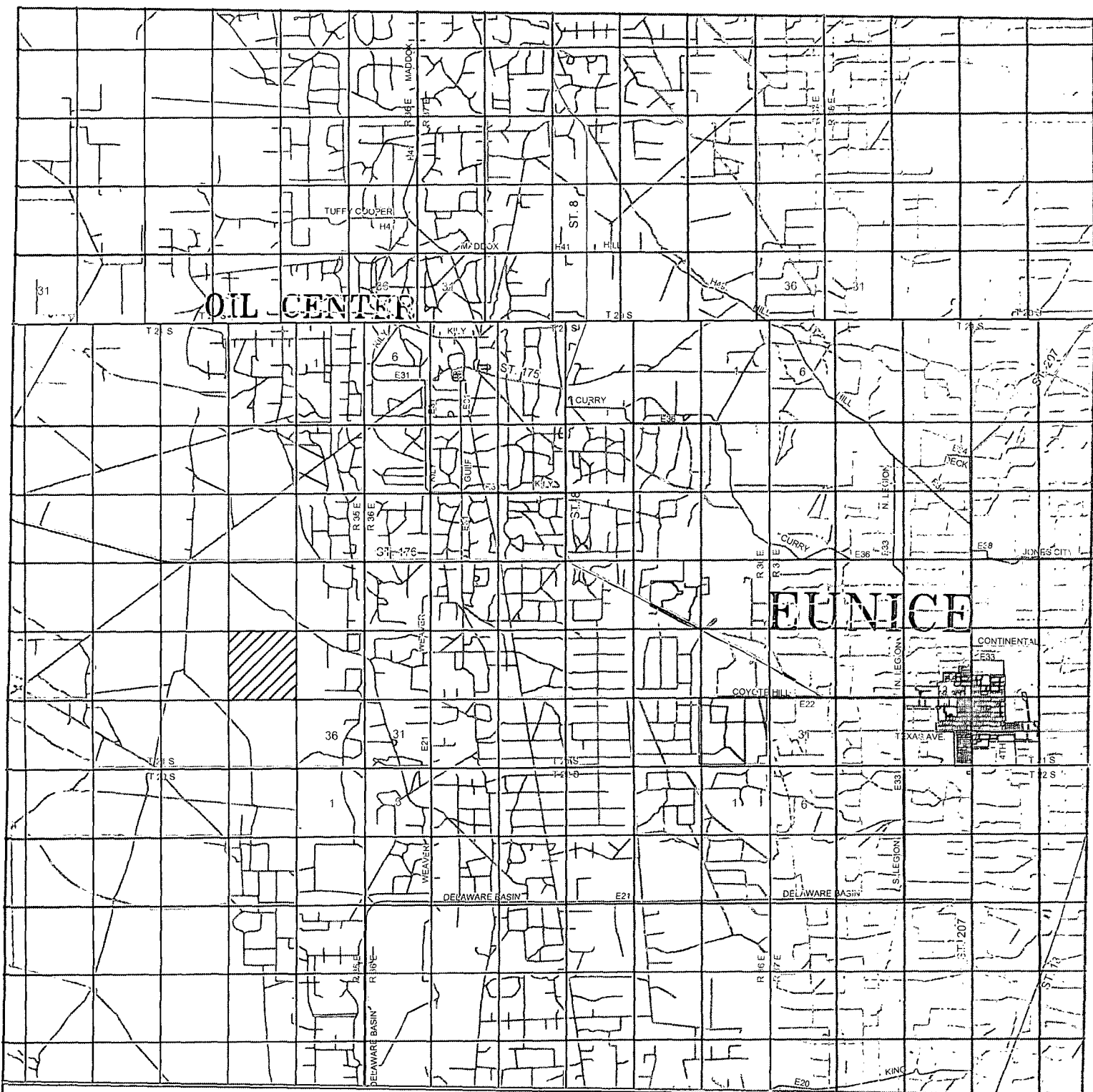
SCALE: 1" = 2000'

W.O. Number: KJG - 29377

Survey Date: 09-12-2013

YELLOW TINT - USA LAND
BLUE TINT - STATE LAND
NATURAL COLOR - FEE LAND

M&M
ENERGY
LLC



STATE "26" #1

Located 601' FNL and 2018' FEL
Section 26, Township 21 South, Range 35 East,
N.M.P.M., Lea County, New Mexico.

basin
surveys
focused on excellence
in the oilfield

P.O. Box 1786
1120 N. West County Rd.
Hobbs, New Mexico 88241
(575) 393-7316 - Office
(575) 392-2206 - Fax
basinsurveys.com

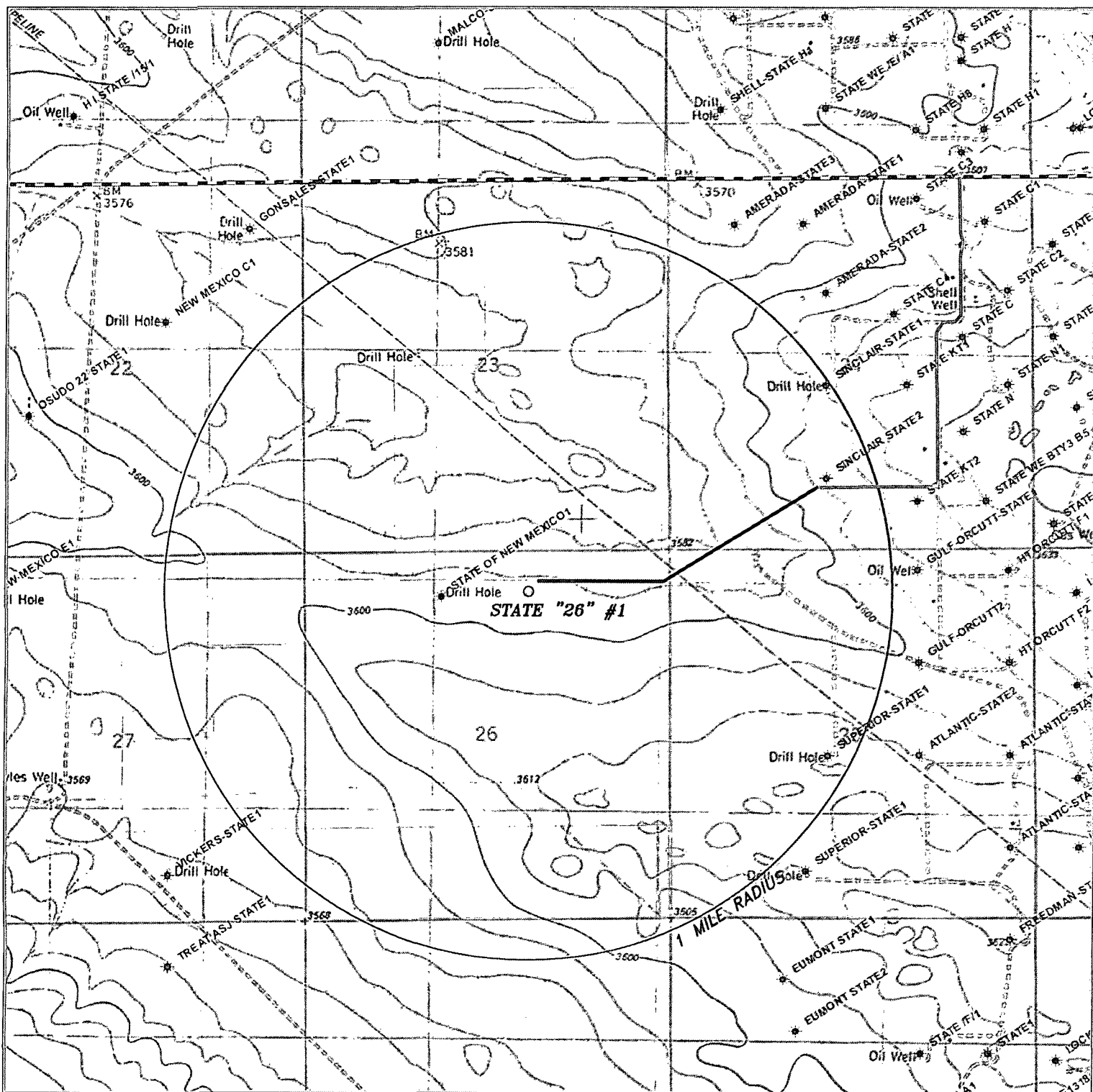
0 1 MI 2 MI 3 MI 4 MI
SCALE: 1" = 2 MILES

W.O. Number: KJG - 29377

Survey Date: 09-12-2013

YELLOW TINT - USA LAND
BLUE TINT - STATE LAND
NATURAL COLOR - FEE LAND

M&M
ENERGY
LLC



STATE "26" #1

Located 601' FNL and 2018' FEL
 Section 26, Township 21 South, Range 35 East,
 N.M.P.M., Lea County, New Mexico.

basin
surveys
 focused on excellence
 in the oilfield

P.O. Box 1786
 1120 N. West County Rd.
 Hobbs, New Mexico 88241
 (575) 393-7316 - Office
 (575) 392-2206 - Fax
 basinsurveys.com

0' 1000' 2000' 3000' 4000'
 SCALE: 1" = 2000'

W.O. Number: KJG - 29377

Survey Date: 09-12-2013

YELLOW TINT - USA LAND
 BLUE TINT - STATE LAND
 NATURAL COLOR - FEE LAND

M&M
ENERGY
LLC