

State of New Mexico
Energy, Minerals and Natural Resources

Form C-103
Revised July 18, 2013

HOES:OCD

OCT 11 2013

RECEIVED

OIL CONSERVATION DIVISION

1220 South St. Francis Dr.
Santa Fe, NM 87505

WELL API NO. 30-043-40002
5. Indicate Type of Lease STATE <input type="checkbox"/> FEE <input checked="" type="checkbox"/>
6. State Oil & Gas Lease No.
7. Lease Name or Unit Agreement Name Monument AGI
8. Well Number 1
9. OGRID Number 24650
10. Pool name or Wildcat AGI in Devonian/Fusselman

SUNDRY NOTICES AND REPORTS ON WELLS
(DO NOT USE THIS FORM FOR PROPOSALS TO DRILL OR TO DEEPEN OR PLUG BACK TO A DIFFERENT RESERVOIR. USE "APPLICATION FOR PERMIT" (FORM C-101) FOR SUCH PROPOSALS.)

1. Type of Well: Oil Well ☐ Gas Well ☒ Other AGI Well

2. Name of Operator
Targa Midstream Services, LP

3. Address of Operator
1000 Louisiana, Ste 4300, Houston, TX 77002

4. Well Location
Unit Letter O : 662 feet from the S line and 2513 feet from the E line
Section 36 Township 19S Range 36E NMPM Lea County

11. Elevation (Show whether DR, RKB, RT, GR, etc.)
3571 GR

12. Check Appropriate Box to Indicate Nature of Notice, Report or Other Data

NOTICE OF INTENTION TO:

PERFORM REMEDIAL WORK ☐ PLUG AND ABANDON ☐
TEMPORARILY ABANDON ☐ CHANGE PLANS ☐
PULL OR ALTER CASING ☐ MULTIPLE COMPL ☐
DOWNHOLE COMMINGLE ☐
CLOSED-LOOP SYSTEM ☐
OTHER: ☐

SUBSEQUENT REPORT OF:

REMEDIAL WORK ☒ ALTERING CASING ☐
COMMENCE DRILLING OPNS. ☐ P AND A ☐
CASING/CEMENT JOB ☐
OTHER: ☐

13. Describe proposed or completed operations. (Clearly state all pertinent details, and give pertinent dates, including estimated date of starting any proposed work). SEE RULE 19.15.7.14 NMAC. For Multiple Completions: Attach wellbore diagram of proposed completion or recompletion.

Please see attached

Spud Date:

9-26-13

Rig Release Date:

10-4-13

I hereby certify that the information above is true and complete to the best of my knowledge and belief.

SIGNATURE Denise Jones TITLE Regulatory Analyst DATE 10/08/2013Type or print name Denise Jones E-mail address: djones@cambrianmgmt.com PHONE: 432-620-9181

For State Use Only

APPROVED BY [Signature] TITLE DIST. MGR DATE 10-15-2013

Conditions of Approval (if any):

OCT 15 2013

9/26/13: MI&RU unit and other equipment.

9/27/13: Kill tubing with 11.4 CaCl water. Ran and set RBP on slick line in pup joint below packer at 8300'. Test plug with 500psi.

9/28/13: Found RBP not holding. Pulled RBP with slick line.

9/29/13: Punch 6 holes in joint of tubing just above packer. Killed tubing and casing by pumping 11.4 CaCl water down both stings. Well on vacuum. ND tree and install BOP. Release seals from permanent packer. POH and LD 226 joints of tubing. Ran 1200' kill string and wait on seals to be redressed.

9/30/13: Unable to kill well with 11.4 CaCl water. Ordered 12.8 mud.

10/01/13: Kill well with 12.8 fluid. Pull and LD kill string. PU redressed packer seals and on/off tool with blanking plug in place. RIH PU new string of tubing. Had to kill well with 12.8 fluid. Latch into packer and test with 500psi – Ok. Release on/off tool. Began reversing out kill fluid with brine and got slug of H₂S at surface. Circulated out through flow back equipment.

10/2/13: Finish circulating out H₂S and kill mud. Displace well with brine water and corrosion inhibitor for packer fluid. Well dead. POH with 4 stands of tubing and PU SSSV. RIH and latch on/off tool. Set with 10,000# on packer. Test with 1000psi – Ok. ND BOP and install tree.

10/3/13: Ran MIT test with 540psi. Test Ok. Retrieved blanking plug from on/off tool. Flow well back overnight.

14/4/13: RD and MO all equipment to return well to acid gas disposal service.

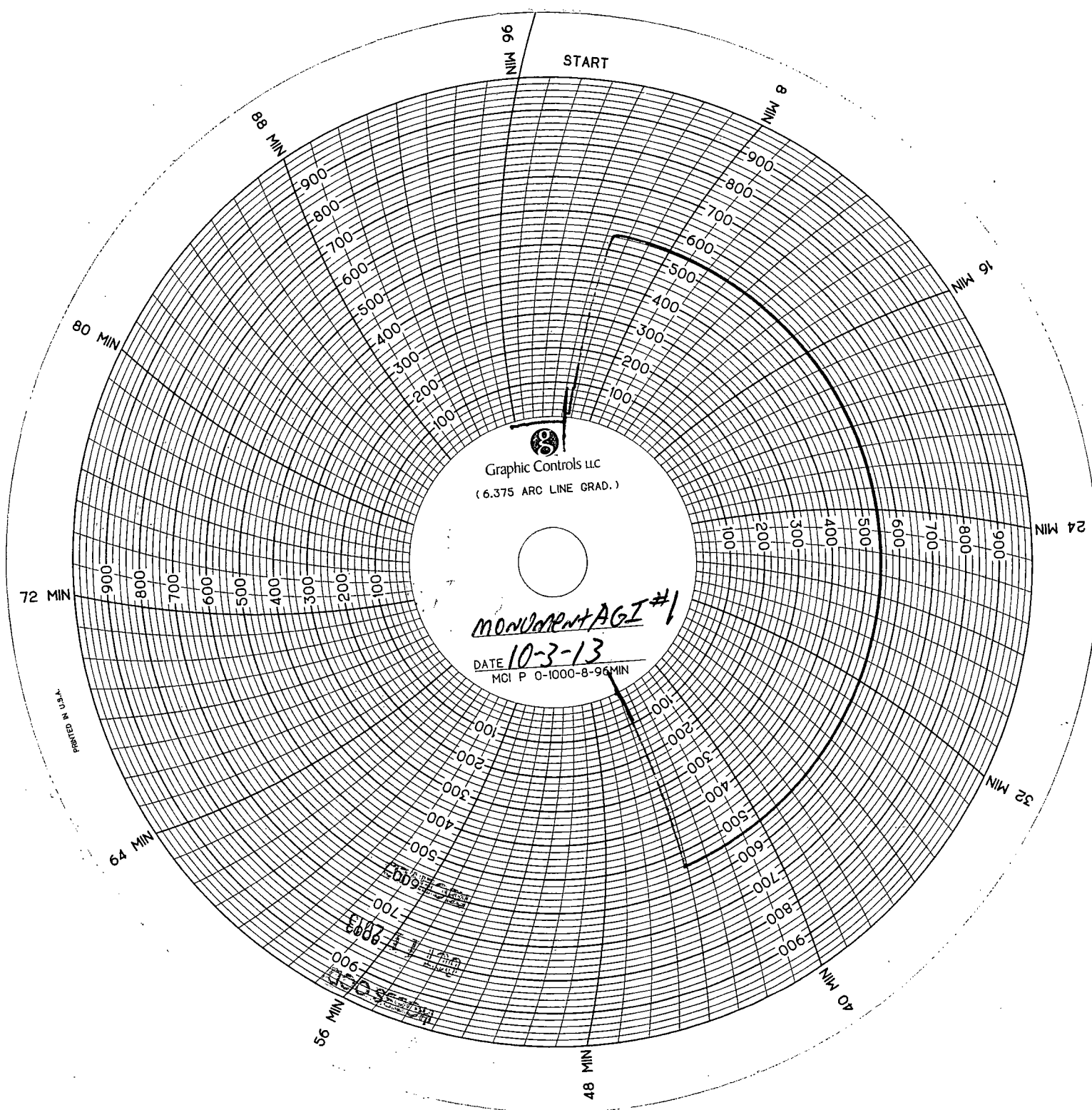


MONUMENT AGI #1
LEA COUNTY, NM
10/1/13

JODY LINTHICOM
SCOTT WALTON
Office ODESSA
SAP No. 90077028

Final Installation		LEA COUNTY, NM 10/1/13		Office ODESSA SAP No. 90077028	
Installation	Length	Depth	Description	OD	ID
1	13.00	8.99	KELLY BUSHING CORRECTION		
2	1	0.61	3.5" EUE DOUBLE PIN ADAPTER	3.500	2.710
2	8.40	4.62	3.5" 9.3# J55 8RD TUBING SUBS (4.20 - 4.20)	3.500	2.752
3	259.78	13.02	8 JOINTS 3.5" 9.3# J55 8RD TUBING	3.500	2.752
4	7.10	272.80	HALLIBURTON TUBING RETRIEVABLE SAFETY VALVE 101711697 SERIAL # C2462265-1	5.410	2.313
5	8,015.06	279.90	255 JOINTS OF 3.5" 9.3# J55 8RD TUBING WITH	3.500	2.752
6	0.75	8,294.96	3.5" 8RD BOX X PIN ADAPTER	4.500	2.710
7	2.35	8,295.71	HALLIBURTON 7" X 3.5" XL ON-OFF TOOL WITH A 2.313 'X' PROFILE IN GUDGEON. ALLOY 725 212XLH3520-Z	5.780	2.313
8	0.62	8,298.06	HALLIBURTON J-LATCH SEAL ASSEMBLY TOTAL LENGTH S 3.91'. STICKS ABOVE PACKER .62'	4.540	2.380
9	3.88	8,298.68	HALLIBURTON 7" 23-38# PERMINANT PACKER 212TWB7010 WAS SET ON WIRELINE WITH ELEMENTS AT 8300'. TOP OF PACKER @ 8298.68. TUBING LANDED WITH 12,000# COMPRESSION	5.680	3.250
10	6.10	8,302.56	3.5" 9.3# J55 8RD DUO-LINED TUBING SUB	3.500	2.680
11	1.27	8,308.66	HALLIBURTON 3.5" X 2.313 'X' NIPPLE 711X23319	4.510	2.313
12	6.13	8,309.93	3.5" 9.3# J55 8RD DUO-LINED TUBING SUB	3.500	2.680
13	0.65	8,316.06	3.5" RE-ENTRY GUIDE	4.500	3.480
		8,316.71	BOTTOM OF ASSEMBLY		

Filename:



Graphic Controls LLC
(6.375 ARC LINE GRAD.)

MONTAGI #1

DATE 10-3-13
MCI P 0-1000-8-96MIN

PRINTED IN U.S.A.

Company Cambrian Management
Lease: Targa
Date of Test: 10-3-13
Packer: make 7" 23-38 model Refract Well No: 8300'
Tubing Pressure: 0 min 540 15 min 540 30 min 540
Casing Pressure: 0 min 0 15 min 0 30 min 0
Surf Csg Pressure: 0 min 1000 15 min 1000 30 min 1000
to spring
Service Company: Basis Energy Services
Driver/Supervisor: Donald Douglas
Company Representatives: Walter H. W. W.
RRC Required: Y N
Witnessed by RRC: Y N

James Ingram
TARGA RESOURCES
10-3-13