

Submit 1 Copy To Appropriate District Office  
District I - (575) 393-6161  
1625 N. French Dr., Hobbs, NM 88240  
District II - (575) 748-1283  
811 S. First St., Artesia, NM 88210  
District III - (505) 334-6178  
1000 Rio Brazos Rd., Aztec, NM 87410  
District IV - (505) 476-3460  
1220 S. St. Francis Dr., Santa Fe, NM 87505

State of New Mexico  
Energy, Minerals and Natural Resources

OIL CONSERVATION DIVISION  
1220 South St. Francis Dr.  
Santa Fe, NM 87505

Form C-103

Revised August 1, 2011

<b>SUNDRY NOTICES AND REPORTS ON WELLS</b> (DO NOT USE THIS FORM FOR PROPOSALS TO DRILL OR TO DEEPEN OR PLUG BACK TO A DIFFERENT RESERVOIR. USE "APPLICATION FOR PERMIT" (FORM C-101) FOR SUCH PROPOSALS.)		WELL API NO. 30-025-40466
1. Type of Well: Oil Well <input checked="" type="checkbox"/> Gas Well <input type="checkbox"/> Other INJECTION <u>(WAG)</u>		5. Indicate Type of Lease STATE <input checked="" type="checkbox"/> FEE <input type="checkbox"/>
2. Name of Operator CHEVRON U.S.A. INC.		6. State Oil & Gas Lease No.
3. Address of Operator 15 SMITH ROAD, MIDLAND, TEXAS 79705		7. Lease Name or Unit Agreement Name CENTRAL VACUUM UNIT
4. Well Location Unit Letter E: 2033 feet from the NORTH line and 1187 feet from the WEST line Section 31 Township 17-S Range 35-E NMPM County LEA		8. Well Number 274
11. Elevation (Show whether DR, RKB, RT, GR, etc.)		9. OGRID Number 4323
		10. Pool name or Wildcat VACUUM GRAYBURG SAN ANDRES

12. Check Appropriate Box to Indicate Nature of Notice, Report or Other Data

NOTICE OF INTENTION TO:

PERFORM REMEDIAL WORK ☐ PLUG AND ABANDON ☐  
TEMPORARILY ABANDON ☐ CHANGE PLANS ☒  
PULL OR ALTER CASING ☐ MULTIPLE COMPL ☐  
DOWNHOLE COMMINGLE ☐

SUBSEQUENT REPORT OF:

REMEDIAL WORK ☐ ALTERING CASING ☐  
COMMENCE DRILLING OPNS. ☐ P AND A ☐  
CASING/CEMENT JOB ☐

OTHER:

COMPLETION OF NEW WELL

OTHER

13. Describe proposed or completed operations. (Clearly state all pertinent details, and give pertinent dates, including estimated date of starting any proposed work). SEE RULE 19.15.7.14 NMAC. For Multiple Completions: Attach wellbore diagram of proposed completion or recompletion.

PLEASE FIND ATTACHED, REPORTS FOR WORK DONE FROM 08-27-2012 THROUGH 10/24/2012 FOR COMPLETION OF THIS NEW DRILL.

ALSO FIND ATTACHED, THE CHART THAT WAS RUN ON 10/24/2012.

Spud Date:

Rig Release Date:

I hereby certify that the information above is true and complete to the best of my knowledge and belief.

SIGNATURE

Denise Pinkerton

TITLE: REGULATORY SPECIALIST

DATE: 05/17/2013

Type or print name: DENISE PINKERTON

E-mail address: leakejd@chevron.com

PHONE: 432-687-7375

APPROVED BY:

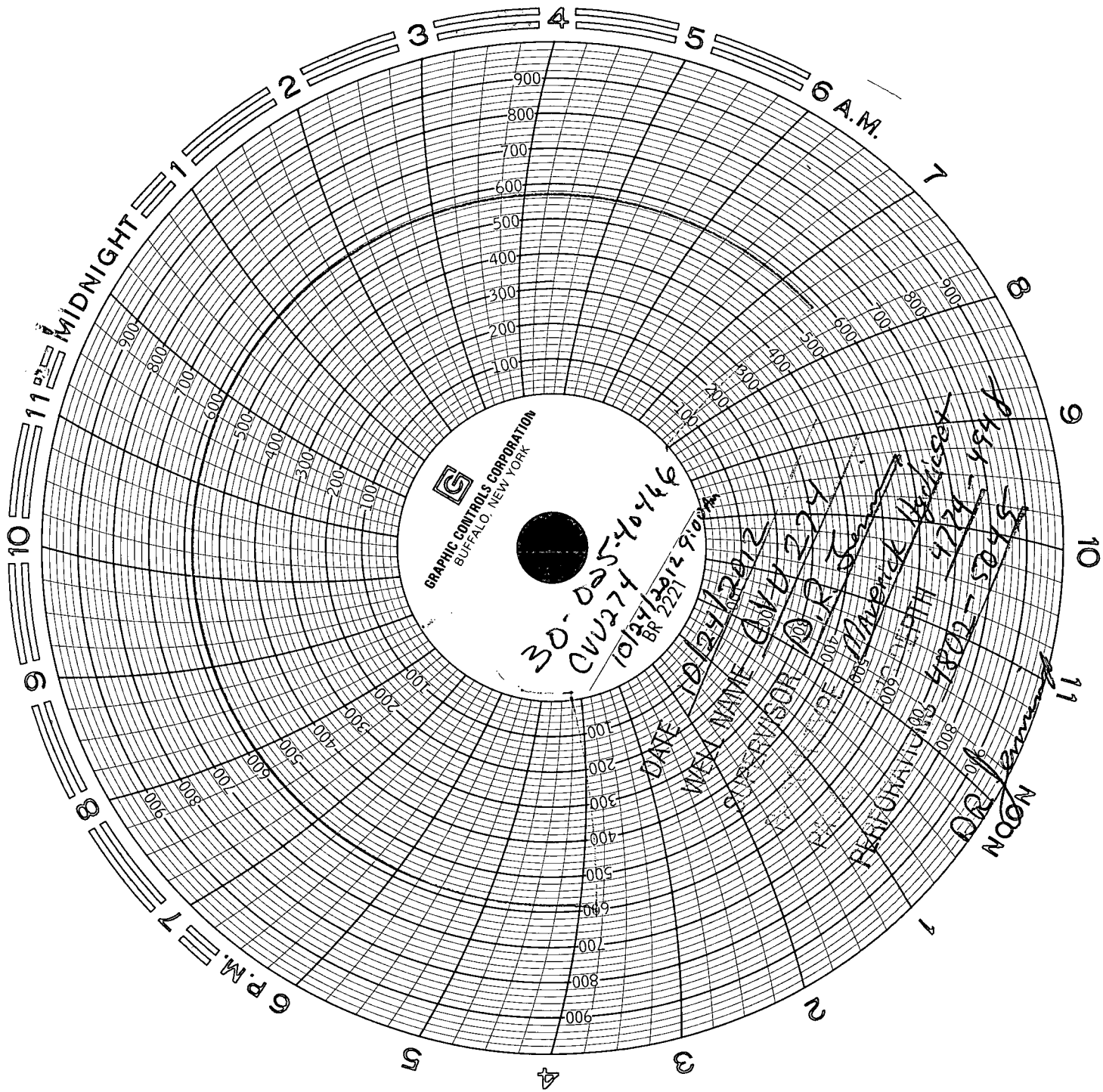
E. Gonzalez  
WFX 901

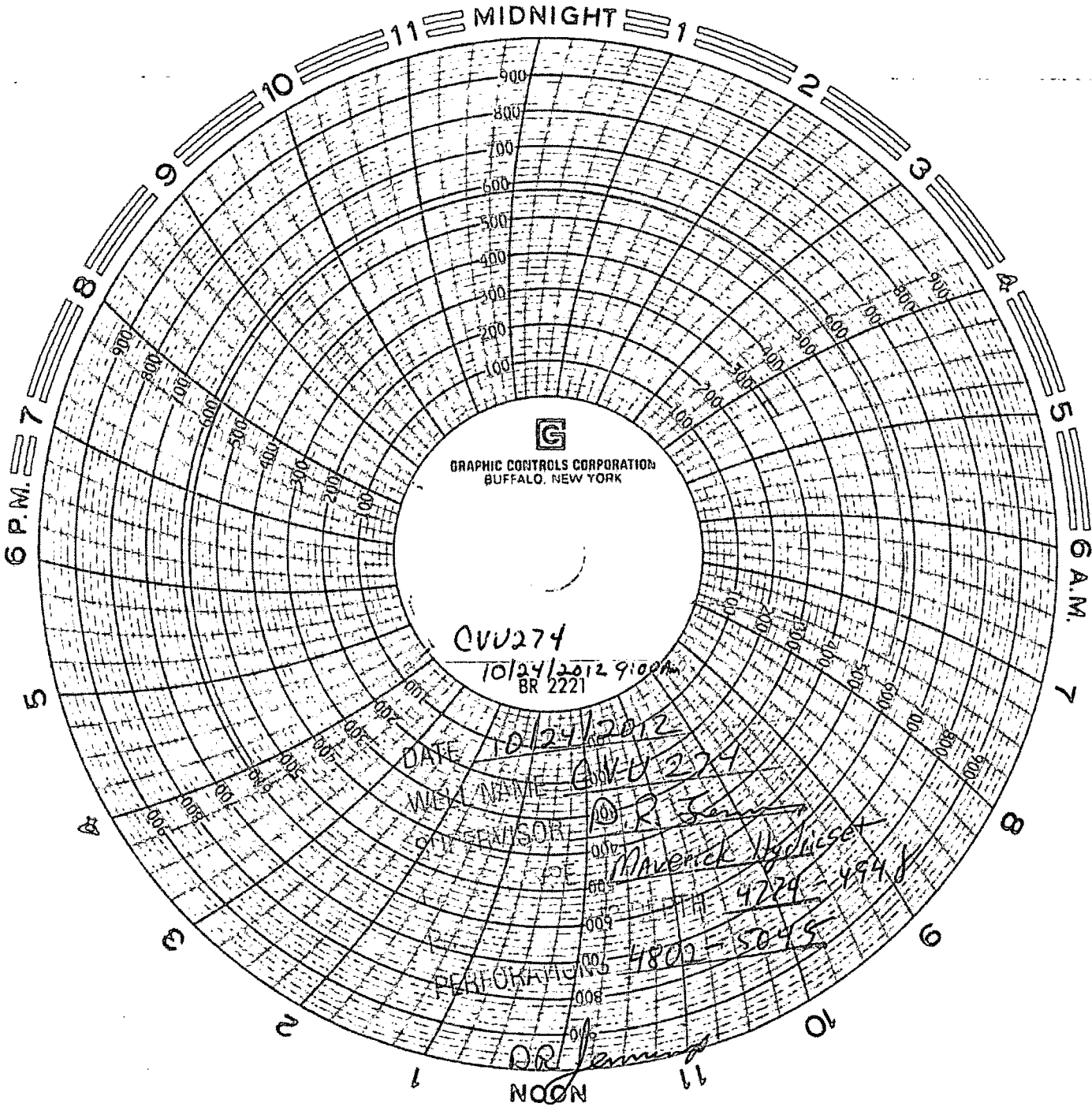
TITLE DIST. MGR

DATE 10-16-2013

Conditions of Approval (if any):

OCT 16 2013





CVU274

10/24/2012 9:00 AM  
BR 2221

DATE 10/24/2012

WEEK NAME CVU 274

CONTROLLER R. S. S.

PERFORMANCE 4729 - 4848

PERFORMANCE 4800 - 5045

PERFORMANCE 4800 - 5045

PERFORMANCE 4800 - 5045

PERFORMANCE 4800 - 5045

PERFORMANCE 4800 - 5045

PERFORMANCE 4800 - 5045

PERFORMANCE 4800 - 5045

PERFORMANCE 4800 - 5045



# Summary Report

Completion

Complete

Job Start Date: 8/27/2012

Job End Date: 10/24/2012

Well Name CENTRAL VACUUM UNIT 274		Lease Central Vacuum Unit	Field Name Vacuum	Business Unit Mid-Continent/Alaska	
Ground Elevation (ft) 3,974.00	Original RKB (ft) 3,992.40	Current RKB Elevation <elvrother>, <elvdttmstart>		Mud Line Elevation (ft)	Water Depth (ft)

Report Start Date: 8/25/2012

Com

Report Start Date: 8/26/2012

Com

Report Start Date: 8/27/2012

Com

Report Start Date: 9/22/2012

Com

pull back pressure valve and install frac valve

mi ru nabors kill truck and Baker Atlas and load and test lubercator to 250 low and 1000 psi high, rih with NGT-CNL-RADIAL CEMENT BOND LOG, LOG FROM TD TO SURFACE, LOG CNL FROM TD TO 3214, RUN RADIAL BOND LOG WITH 0 PSI ON FIRST PASS AND 1000 PSI ON SECOND PASS, RD WIRELINE TRUCK AND KILL TRUCK, (NOTE: GAVE INSTRUCTION TO WIRELINE ENGINEER ON WHO TO SEND LOGS TO, GAVE COPY OF PROCEEDURE TO HIM FOR THE CONTACT NAMES) rd wireline and pump truck, will load and test well and frac head on monday,

Report Start Date: 9/24/2012

Com

mi ru nabors pump truck and load both braiden heads with fresh water install acid valve, load and test casing, frac valve to 4000 psi for 30 minutes, held, rd pump truck

Report Start Date: 9/24/2012

Com

Report Start Date: 9/28/2012

Com

JSA MEETING, W/WIRELINE CREW

MI SPOT WIRELINE TRUCK AND RIG UP EQUIPMENT.

LOAD GUNS, PICK UP LUBRICATOR. RIH W/ PERF GUNS, CCL-GR,

1ST RUN PERFS: 4966 - 86'

2ND: 5012' - 46'

3RD: 4889' - 4919'

4TH: 4859' - 89'

5TH: 4829 - 59'

6TH: 4802' - 4829'

RAN 3-3/8" PREDATOR GUNS W/ 2 SPF @ 120 DEGREE PHASING. PERF. CHARGE: 35 gram, 0.41" EHD, 47.56

RD WIRELINE. NU ACID VALVE.

WELLSHUT IN AND SHUT DOWN.

Report Start Date: 9/29/2012

Com

MI SPOT ACID EQUIPMENT.

JSA MEETING W/ ACID CREW.

RU PUMPING LINES, MIX ACID.

PRESSURE TEST LINES TO 5000 PSI. START WITH A FW BREAK DOWN. PUMPED 30 BBLS UNTIL PRESSURE ROSE (2208 PSI & 2.8 BPM). SWITCH OVER TO ACID ( 20000 GALLONS 15% HCL), PUMP 48 BBLS, THEN DROPPED FIRST SET OF BALL (20 - 7/8" 1.18 S.G.). AFTER THAT DROPPED 20 BALLS EVERY 16 BBLS, UNTIL WE GOT UP TO 140 BALLS ON FORMATION. NO BALL ACTION WAS SEEN, SO BALLS DROPPED WAS INCREASED TO 40 BALLS EVERY 16 BBLS OF ACID. SOME BALL ACTION WAS NOTICED, BUT IT WAS ONLY ABOUT 50 - 60 PSI INCREASE. INCREASE TO 60 BALLS EVERY 16 BBLS OF ACID, STILL HAD NO REAL BALL ACTION, ONLY ABOUT 80 - 100 PSI. FLUSHED W/ FW TO BTM PERFS @ 5047' ( 117 BBLS). MAX PSI @ 3096, MIN PSI @ 2346, AVG PSI @ 2721. AVG RATE 9.3, MAX RATE: 9.5. TOTAL LOAD PUMPED 630.4 BBLS (480 BBLS OF ACID & 152 BBLS OF FW). TOTAL BALLS DROPPED: 516. ISIP: 1951, 5 MIN: 964 PSI, 10 MIN: 596 PSI, 15 MIN: 393 PSI.

FINISH RU MANFOLD LINES OT WH.

OPEN UP WELL, 0 PSI ON MANIFOLD PRESSURE GAUGE, WELL ON A VACUUM. LEAVE WELL OPEN AND MONITOR WELL FOR 2 + HR. WELL NEVER FLOWED, IT WAS ALWAYS ON A VACUUM.

WELL SHUT IN AND SHUT DOWN. PREP TO RIH AND SET COMPOSITE PLUG AND RETRIEVABLE RBP.

Report Start Date: 10/2/2012

Com

ru gray test lub 250#/ 1000# ok bled off rih w/ gr and jb to 4700' ok rih and coralate log set cbp at 4600' load and test cbp to 1000# ok bled off rih and set rbp at 475' rd e/line

nd frav valve install b-1 flange w/ valve on top

Report Start Date: 10/18/2012

Com

crew travel

review jsa's and check tubing elevators for correct size



# Summary Report

Completion  
Complete

Job Start Date: 8/27/2012

Job End Date: 10/24/2012

Well Name CENTRAL VACUUM UNIT 274		Lease Central Vacuum Unit	Field Name Vacuum	Business Unit Mid-Continent/Alaska	
Ground Elevation (ft) 3,974.00	Original RKB (ft) 3,992.40	Current RKB Elevation <elvrother>, <elvdttmstart>		Mud Line Elevation (ft)	Water Depth (ft)

Com  
mi ru key 336 , move in reverse unit, frac tanks , pipe racks , workstring  
had meeting with E-Colors with crew  
crew shut down for contractor appreciation day at buckeye to eat lunch with rest of the crews and contractors  
gih with work string and retrieving head and release rbp @475  
pooh with rbp  
start in hole with 4 3/4 bit and 6 drill collars on 2 7/8 workstring , picking up tubing off of racks, secure well prepare to drill composite and check TD in the morning  
crew travel

Report Start Date: 10/19/2012

Com  
crew travel  
review jsa's and check tubing elevators for correct size  
ru power sweivel and break circ with fresh water  
tag composite @ 4600 and drill composite, when drilled , lost circ  
continue to pump water and finally got circ, made sure the tubing wasn't plugged, pump our remaining water and continue in hole  
gih with tubing and tag TD @ 5145'  
circ hole clean with fresh water, losing 1 bbls to 2 bbls pumped,  
pooh with workstring and lay down drill collars and bit  
gih with bull plug , 10' sub 2 7/8 ryt wrap ,transition sub, 1.62 injection valve, 8x4' 2 7/8 ryt wrap fiberline subs, 3 jts 2 7/8 ryt wrap fiberline tubing, tranistion sub, 5 1/2 hydraulic packer, 1.81 injection valve, extended lenght on/off tool, 5 1/2 test packer on 145 jts, leaving tools swinging above the perms, secure well prepare to finish running BHA on Monday, and slick line  
crew travel

Report Start Date: 10/22/2012

Com  
NOTE: notified Mazey Brown (OCD) about MIT test on wednesday, was told to continue with test  
crew travel  
revei w jsa's and check tubing elevators for correct size  
finish gih with bottom hole assembly ,  
mi ru Diamond D slickline and gih with guage rings and gih with blanking sleeves and set in profiles  
mi ru nabors pump truck, tie on to tubing and load nand set bottom packer with 2800 psi , bottom packer @ 4953'. get of on/off tool with test packer and set packer above injection packer and test bottom packer to 500 psi, rd pump truck  
release packer and pooh with tubing and packer, laying down workstring on racks  
move out workstring , move in fiberline and ryt wrap tubing, talley tubing  
start in hole with 5 jts ryt wrap fiberline and 2 7/8 fiberline injection tubing, secure well prepare to finish running injection tubing in the morning  
crew travel

Report Start Date: 10/23/2012

Com  
crew travel  
review jsa's, check tubing elevators for correct size  
finish gih with 147 jts 2 7/8 fiberline L-80 tubing and packer with on/off tool and 5 jts ryt wrap tubing with on/ off tool  
mi ru nabors pump truck and load and attempt to set top packer @ 4780, had to latch onto packer and get off on/off tool many times to find neutral, it kept coming off top packer not the bottom packer, finially set with 1700 psi, continue to pressure up to 3000 psi, load and test backside to 500 psi,  
get off on/off tool and circ hole with packer fluid  
nd bop, install landing donut in wellhead  
nu wellhead, test wellhead to 5000 psi  
mi ru slickline and gih and start fishing blanking sleeves, secure well, prepare to run injection sleeves in the morning  
crew travel

Report Start Date: 10/24/2012

Com  
crew travel  
review jsa's  
mi ru Diamond D slickline and gih with .1894 orifice in segregation valve @ 4948, gih with .1661 orifice in segregation valve @ 5066' rd slickline  
tie in reverse unit and run MIT test to 600 psi for 30 minutes, held  
rd workover rig 336, finial report, turn well over to production  
turned in MIT chart to Field engineer at buckeye office on this date

