

Submit 1 Copy To Appropriate District Office
District I - (575) 393-6161
1625 N. French Dr., Hobbs, NM 88240
District II - (575) 748-1283
811 S. First St., Artesia, NM 88210
District III - (505) 334-6178
1000 Rio Brazos Rd., Aztec, NM 87410
District IV - (505) 476-3460
1220 S. St. Francis Dr., Santa Fe, NM 87505

State of New Mexico
Energy, Minerals and Natural Resources
OIL CONSERVATION DIVISION
1220 South St. Francis Dr.
Santa Fe, NM 87505

Form C-103

Revised August 1, 2011

SUNDRY NOTICES AND REPORTS ON WELLS (DO NOT USE THIS FORM FOR PROPOSALS TO DRILL OR TO DEEPEN OR PLUG BACK TO A DIFFERENT RESERVOIR. USE "APPLICATION FOR PERMIT" (FORM C-101) FOR SUCH PROPOSALS.)		WELL API NO. 30-025-30568
1. Type of Well: Oil Well <input checked="" type="checkbox"/> Gas Well <input type="checkbox"/> Other <input type="checkbox"/>		5. Indicate Type of Lease STATE <input checked="" type="checkbox"/> FEE <input type="checkbox"/>
2. Name of Operator CHEVRON MIDCONTINENT, L.P. <i>USA INC</i>		6. State Oil & Gas Lease No.
3. Address of Operator 15 SMITH ROAD, MIDLAND, TEXAS 79705		7. Lease Name or Unit Agreement Name B.F. HARRISON "B"
4. Well Location Unit Letter: F 1980 feet from the NORTH line and 1800 feet from the WEST line Section 9 Township 23S Range 37E NMPM County LEA		8. Well Number 2
11. Elevation (Show whether DR, RKB, RT, GR, etc.)		9. OGRID Number 4323
		10. Pool name or Wildcat TEAGUE; TUBB, NORTH

12. Check Appropriate Box to Indicate Nature of Notice, Report or Other Data

NOTICE OF INTENTION TO:

PERFORM REMEDIAL WORK ☐ PLUG AND ABANDON ☐
TEMPORARILY ABANDON ☐ CHANGE PLANS ☐
PULL OR ALTER CASING ☐ MULTIPLE COMPL ☐
DOWNHOLE COMMINGLE ☐

SUBSEQUENT REPORT OF:

REMEDIAL WORK ☐ ALTERING CASING ☐
COMMENCE DRILLING OPNS. ☐ P AND A ☐
CASING/CEMENT JOB ☐

OTHER:

OTHER RECOMPLETION TO TUBB

13. Describe proposed or completed operations. (Clearly state all pertinent details, and give pertinent dates, including estimated date of starting any proposed work). SEE RULE 19.15.7.14 NMAC. For Multiple Completions: Attach wellbore diagram of proposed completion or recompletion.

PLEASE FIND ATTACHED, THE REPORTS FOR WORK DONE FROM 06/20/2013 THROUGH 07/12/2013

09/19/2013: ON 24 HR OPT. PUMPING 7 OIL, 30 GAS, & 24 WATER. GOR-4285.

Spud Date:

Rig Release Date:

I hereby certify that the information above is true and complete to the best of my knowledge and belief.

SIGNATURE

Denise Pinkerton

TITLE: REGULATORY SPECIALIST

DATE: 10/14/2013

Type or print name: DENISE PINKERTON

E-mail address: leakejd@chevron.com

PHONE: 432-687-7375

For State Use Only

APPROVED BY:

[Signature]

TITLE

Petroleum Engineer

DATE

OCT 23 2013

Conditions of Approval (if any):

PA Teague Wolfcamp North

OCT 23 2013



Summary Report

Major Rig Work Over (MRWO)
Completion - Reconfigure
Job Start Date: 6/20/2013
Job End Date: 7/12/2013

Well Name HARRISON, B.F. 'B' 002		Lease Harrison, B.F. 'B'	Field Name Teague North	Business Unit Mid-Continent	
Ground Elevation (ft) 3,310.00	Original RKB (ft) 3,329.00	Current RKB Elevation		Mud Line Elevation (ft)	Water Depth (ft)

Report Start Date: 6/20/2013

Com

JSA
- ROAD RIG AND EQUIPMENT TO LOCATION AND SPOT IN

JSA
- RU SERVICE UNIT AND EQUIPMENT

JSA
- B1 ADAPTER BOLTS AND NUTS WERE SEIZED TOGETHER, USED TORQUE WRENCH AND HACK SAW TO REMOVE
- INSTALL NEW BOLTS AND SHUT IN WELL

TRAVEL FROM LOCATION

Report Start Date: 6/21/2013

Com

TRAVEL TO LOCATION

JSA REVIEW
- SERVICE AND START RIG

JSA
- ND B1 ADAPTER
- NU BOP, RIG FLOOR AND EQUIPMENT
- MU 7" PACKER AND RIH TO 25FT, P/T BOP 250 PSI LOW 1000 PSI HIGH (TEST GOOD)
- RELEASE POH AND LAY DOWN PACKER

JSA
- MU 6 1/8 CON BIT AND RIH, TAGGED CIBP AT 7203

JSA
- CIRCULATED WELL CLEAN WITH 320 BBLS WATER

JSA
- POH STAND BACK 2.875 TBG LAYING DOWN 6 1/8 BIT

TRAVEL FROM LOCATION

Report Start Date: 6/24/2013

Com

TRAVEL TO LOCATION

JSA REVIEW
- SERVICE AND START RIG

JSA
- MIRU E LINE
- BUMP BAIL 4 SACKS CEMENT BETWEEN 2 RUNS, ON TOP OF CIBP AT 7203
- RDMO E LINE
- SHUT WIN WELL

TRAVEL FROM LOCATION

WAIT ON CEMENT OVERNIGHT

Report Start Date: 6/25/2013

Com

TRAVEL TO LOCATION

SM JSA DISCUSS RU E-LINE LUBRICATOR BLOW DOWN WELL USE THREE POINT CONTACT WHEN GOING UP AND DOWN STAIRS DO NOT STEP ON LINES CABLES HOSES OR UNEVEN GROUND INSPECT LIFTING EQUIPMENT PRIOR TO USE/ USE TAG LINE ON LUBRICATOR STAY CLEAR OF SUSPENDED LOADS

BD WELL INSPECT SCE CHECK FLUID LEVELS START UP RIG AND EQUIPMENT SET COFO LIMITS RU LUBRICATOR AND EQUIPMENT

SM JSA DISCUSS TIH WITH LOGGING EQUIPMENT LOG AND ARM PERFORATING GUN STAY CLEAR OF WINCH LINE AND CABLE SET UP STRIKE ZONE AROUND WELLHEAD BETWEEN LUBRICATOR AND EQUIPMENT TURN OFF CELL PHONES AND RELATED EQUIPMENT USE GOOD COMMUNICATION SET UP STRIKE ZONE WHEN PRESSURING UP CASING TO 500 PSIG

TIH TAG TOP OF CEMENT ON CIBP TAG @ 7183' TOH TO 6290' PRESSURE UP CASING 500 PSIG LOG TO SURFACE WITH APOLLO PERFORATORS RADIAL CEMENT BOND LOG GAMMA RAY CCL ESTIMATED CEMENT TOP 1200' DATED 6-25-2013.

RD LUBRICATOR AND DISARM GUNS

RU BAILER EQUIPMENT MIX AND DUMP 3.5 100# BAGS OF TYPE I-II PORTLAND CEMENT TIH TO TOP OF CEMENT @ 7183' TO ADD AN ADDITION 15 -20' TOH

SECURE WELL AND LOCATION

TRAVEL TO KEY YARD

Report Start Date: 6/26/2013

Com

TRAVEL TO LOCATION

SM JSA DISCUSS RU E-LINE TIH USE THREE POINT CONTACT WHEN GOING UP AND DOWN STAIRS DO NOT STEP ON LINES CABLES HOSES OR UNEVEN GROUND KEEP HANDS AND FINGERS CLEAR MOVING EQUIPMENT SUCH AS TONGS ELEVATORS SLIPS AND PIPE AND RAILING INSPECT LIFT EQUIPMENT AND SCE PRIOR TO USE



Summary Report

Major Rig Work Over (MRWO)

Completion - Reconfigure

Job Start Date: 6/20/2013

Job End Date: 7/12/2013

Well Name HARRISON, B.F. 'B' 002	Lease Harrison, B.F. 'B'	Field Name Teague North	Business Unit Mid-Continent
Ground Elevation (ft) 3,310.00	Original RKB (ft) 3,329.00	Current RKB Elevation	Mud Line Elevation (ft) Water Depth (ft)

Com
WAIT ON PERFORATION CREW TO RELOAD GUNS AT SHOP AND RETURN TO LOCATION FOR A TAG CEMENT DUE TO CHANGE OF ORDERS ON UPDATED PERFORATING SCHEDULE WITH NEW LOGGING DATA

SM JSA DISCUSS TIH WITH GUAGE RING TAG CEMENT STAY CLEAR OF SUSPENDED LOADS INSPECT LIFT EQUIPMENT PRIOR TO USE KNOW WEIGHTS OF LOADS KEEP HANDS AND FINGERS CLEAR OF MOVING EQUIPMENT SUCH AS CABLES AND TOOLS

TIH WITH WIRE LINE TAG CEMENT @ 7166' WL MEASUREMENT 17' OF CEMENT ON TOP OF CIBP WITH WLM OF 7203' FOR CIBP

PU 7" 10K COMPRESSION PACKER AND 7" CLINE RBP 10 K LENGTH 6.0 FT WITH 2.61" RETRIEVING HEAD AND 1.10 SEATING NIPPLE

INSTALL ENVIRONMENTAL DRIP PAN AND PUMP TO CONTROL DISPLACED WATER FROM TUBING WHEN TIH

TIH WITH RBP AND SET @ 6200 PRESSURE TEST 500 LOW 3500 HIGH HELD OKAY

RELEASE TENTION PACKER AND TOH TO 4200' AMBIENT TEMPERATURE 105 F DEGREE'S PLUS

SECURE WELL AND LOCATION

TRAVEL TO KEY YARD

Report Start Date: 6/27/2013

Com
TRAVEL TO LOCATION

SM JSA DISCUSS TOH LD PACKER INSPECT SCE AND LIFT EQUIPMENT PRIOR TO USE HAVE THREE POINT CONTACT ON STAIRS AND RAILING WHEN GOING UP AND DOWN RIG FLOOR KEEP HANDS AND FINGERS CLEAR OF MOVING EQUIPMENT SUCH AS SLIPS ELEVATORS TONGS AND PIPE AND RAILING INSPECT SRL PRIOR TO USE AND STAY 100% TIED OFF WHEN IN DERRICK KNOW DEPTH OF TUBING AND TRIP AT A STEADY PACE USE TAG LINE ON PACKER BHA WHE LAYING IT DOWN USE SPOTTER WHEN BACKING NEAR EQUIPMENT AND WELL HEAD

INSPECT SCE AND ELEVATORS CHECK FLUID LEVELS START RIG AND EQUIPMENT SET COFO LIMITS

TOH LD 7' TEST PACKER

DUMP (5) HUNDRED # BAGS OF SAND ON TOP OF RBP RU WL LUBRICATOR FLANGE ON BOP

PERFORATE CASING WITH APOLLO SLICK GUNS SIZE 3-3/8" 120 DEGREE PHASING 25 GRAM CHARGE .47 HOLE WITH 47" PENETRATION @ INTERVALS OF 6233'-6240'/6210'-6226'/6172'-6193'/6130'-6158'/6120'-6127'/6100'-6127' *

RD PERFORATION EQUIPMENT

PU SONIC HAMMER TOOL TIH TO 4225'

SECURE WELL AND LOCATION

TRAVEL TO KEY YARD

Report Start Date: 6/28/2013

* ACIDIZE

Com
TRAVEL TO LOCATION

SM JSA DISCUSS CHECK PRESSURES TIH WITH TUBING USE THREE POINT CONTACT WHEN GOING UP AND DOWN STAIRS DO NOT STEP ON LINES CABLES HOSES OR UNEVEN GROUND KEEP HANDS AND FINGERS CLEAR OF MOVING EQUIPMENT SUCH AS TONGS ELEVATORS SLIPS AND PIPE AND RAILING INSPECT SCE PRIOR TO USE STAY 100% TIED OFF WHEN IN DERRICK

CHECK PRESSURES INSPECT SCE CHECK ELEVATORS CHECK FLUID LEVELS START RIG AND EQUIPMENT SET COFO LIMITS BLOW DOWN WELL

TIH TO 6100-6135' WITH SONIC HAMMER TOOL

SM JSA DISCUSS RU ACIDIZE AND RD TRUCKS AND EQUIPMENT REVIEW EVACUATION PROCEDURE SET UP STRIKE ZONE FOR PRESSURIZED LINES SET PRV AND KNOW PRESSURE LIMITS OF EQUIPMENT REVIEW POSITION OF EYE WASH STATION AND PPE REQUIREMENTS DRINK FLUIDS TO PREVENT DEHYDRATION DO NOT STEP ON LINES CABLES HOSES OR UNEVEN GROUND MONITER FLUID LEVELS USE GOOD COMMUNICATION EVERYONE HAS THE RESPONSIBILITY TO "STOP THE JOB"

RU LINES AND EQUIPMENT PRESSURE TEST 3000 PSIG HELD OKAY

PUMP 12 BBLS PICKLING ACID WITH CORROSION INHIBITOR AND TIH 6245' INJECT 80 BBLS WATER @ 5 BPM WITH 2200 PSIG TUBING PRESSURE 150 CASING PRESSURE ACROSS THE PERFORATION ZONES OF 6100-6135'/6135-6193'/6210-6240'

GAS RETURNS TO FLOWBACK FROM PICKLED ACID FLUSHED TO SURFACE TANK MONITOR WIND DIRECTION

BLOW DOWN WELL HIGH CONCENTRATION OF SURFACE GAS UNLOAD FLOWBACK TANK TAKE LUNCH BREAK

PUMP 15% HCL ACROSS PERFORATION ZONE OF 6210-6240' PRESSURE UP TUBING 320 AND 500 PSIG CASING ATTEMPT TO BREAK DOWN ZONE FLUSH SURFACE LINES LEAVE SHUT IN 24 HOURS

SECURE WELL AND LOCATION

TRAVEL TO KEY YARD

Report Start Date: 6/29/2013

Com
TRAVEL TO LOCATION

SM JS DISCUSS ACIDIZE TOH CKANGE PIPE RAMS USE THREE POINT CONTACT WHEN GOING UP AND DOWN STAIRS DO NOT STEP ON LINES CABLES OR UNEVEN GROUND SET UP STRIKE ZONE FOR PRESSURIZED LINES WEAR PROPER PPE KNOW POSITION OF MUSTER AREA AND EYE WASH STATION USE GOOD COMMUNICATION ON MANIFOLD BLEED-OFF TRAPPED PRESSURE STANDING TO THE SIDE KEEP HANDS AND FINGERS CLEAR OF MOVING EQUIPMENT SUCH AS TONGS ELEVATORS SLIPS AND PIPE AND RACK STAY CLEAR OF SUSPENDED LOADS AND HAMMER BLOW ANGLE USE BUDDY SYSTEM WHEN RD HARD LINE

BLOW DOWN WELL 80 PSIG CASING 30 PSIG TUBING INSPECT SCE CHECK FLUID LEVELS START RIG AND EQUIPMENT SET COFO LIMITS



Summary Report

Major Rig Work Over (MRWO)
Completion - Reconfigure
Job Start Date: 6/20/2013
Job End Date: 7/12/2013

Well Name HARRISON, B.F. 'B' 002		Lease Harrison, B.F. 'B'	Field Name Teague North	Business Unit Mid-Continent	
Ground Elevation (ft) 3,310.00	Original RKB (ft) 3,329.00	Current RKB Elevation		Mud Line Elevation (ft)	Water Depth (ft)

Com

ATTEMPT TO BREAKDOWN PERFORATIONS WITH 900 PSIG TUBING PRESSURE 1200 PSIG CASING PRESSURE IN STAGES OF 1000 AND 1200 PSIG WITH NO SIGNIFICANT BREAKDOWN

DROP BALL PRESSURE TUBING UP TO 1450 PSIG TO OPEN SONIC HAMMER PORTS

TOH TO 6036'

REVERSE CIRCULATE 60 BBLS WATER TO CLEAR RESIDUAL ACID FROM TUBING

TOH LD 2-7/8" WS

CHANGE OUT PIPE RAMS TO 3-1/2" EUE 8RD TUBING

SECURE WELL AND LOCATION

TRAVEL TO KEY YARD

CHANGE OF WORK SCOPE ON ACIDIZE DUE TO INJECTABILITY OF PERFORATIONS

Report Start Date: 7/1/2013

Com

TRAVEL TO LOCATION

SM JSA DISCUSS MOVE PIPE AND LOAD RACKS PU PIPE PRESSURE TEST NU FRAC VALVE USE THREE POINT CONTACT WHEN GOING UP AND DOWN STAIRS DO NOT STEP ON LINES CABLES HOSES OR UNEVEN GROUND USE SPOTTER WHEN USING FORKLIFT WATCH GUIDE WIRES SET UP A STRIKE FOR LOADING AND UNLOADING PIPE INSPECT SCE AND ELEVATORS PRIOR TO USE STAY CLEAR OF SUSPENDED LOADS KEEP HANDS AND FINGERS CLEAR OF MOVING EQUIPMENT SUCH AS TONGS ELEVATORS SLIPS AND PIPE AND RAILING WHEN PRESSURE TESTING SET UP STRIKE ZONE AND RELEASE TRAPPED PRESSURE STANDING TO THE SIDE

INSPECT SCE CHECK FLUID LEVELS START RIG AND EQUIPMENT SET COFO LIMITS BLOW DOWN WELL 0 PSIG CASING AND TUBING

MOVE 2-7/8" PIPE AND RACKS INSTALL PUL/D MACHING AND PIPE RACKS LOAD 3-1/2" PIPE ON RACKS

CHANGE OUT ELEVATORS REMOVE THREAD PROTECTORS TALLY PIPE

PU PEAK 7" 10K PACKER TEST PIPE RAMS 500 PSIG LOW AND 1000 PSIG HIGH HELD OKAY

PU PACKER BHA TO INCLUDE: (1) PEAK 7" AS1X 10K PACKER LENGTH 8.0' (1) ON/OFF TOOL LENGTH 1.5' (1) 3-1/2" BLAST JOINT LENGTH 10.28' AND (1) Crossover 3-1/2" LENGTH .5' TIH TO 4260'

UNLOAD 10K 3 PORT 1502 FRAC VALVE AND TREE

SECURE WELL AND LOCATION

TRAVEL TO KEY YARD

Report Start Date: 7/2/2013

Com

TRAVEL TO LOCATION

SM JSA DISCUSS TIH SET PACKER NU FRAC VALVE USE THREE POINT CONTACT WHEN GOING UP AND DOWN STAIRS DO NOT STEP ON LINES CABLES HOSES OR UNEVEN GROUND KEEP HANDS AND FINGERS CLEAR OF MOVING EQUIPMENT SUCH AS SLIPS ELEVATORS OR PIPE AND RAILING INSPECT SCE PRIOR TO USE WHEN CLIMBING DERRICK TO REMOVE SHEAVES STAY 100% TIED OFF AND ISPECT SRL AND LIFT EQUIPMENT PRIOR TO USE USE TAG LINE ON FRAC VALE AND ADAPTER

BLOW DOWN WELL 0 PSIG ON CASING AND TUBING INSPECT SCE CHECK FLUID LEVELS START RIG AND EQUIPMENT SET COFO LIMITS RU TUBING TESTING EQUIPMENT

TIH WITH 7" AS1X 10K PACKER AND SET @ 5990' PRESSURE TEST ANNULUS TO 500 PSIG HELD OKAY

NU FRAC VALVE PRESSURE TEST TUBING TO BOTTEM FRAC VALVE ASSEMBLY OR HANGER TO 8000 PSIG HELD OKAY

SM JSA DISCUSS RU AND TEST LINES PUMP ACID RD LINES USE BUDDY SYSTEM WHEN RU LINES STAY CLEAR OF HAMMER BLOW ANGLE SET UP STRIKE ZONE FOR PRESSURE TEST AND WHEN ACIDIZING WEAR PROPER PPE HOBBLE ALL CONNECTIONS REVIEW EVACUATION PROCEDURE AND POSITION OF EYE WASH TRAILER STAY CLEAR OF SUSPENDED LOADS AND RELEASE TRAPPED PRESSURE STANDING TO THE SIDE PRIOR TO BREAKING CONNECTIONS INSPECT AND SET PRV PRIOR TO USE

RU ACID TRUCKS AND EQUIPMENT PRESSURE TEST LINES 4000 PSIG HELD OKAY PUMP DOWN TUBING @ 6 BPM TO OPEN PERFORATIONS FLUID ACCEPTED @ 2000 PSIG PUMP 30 BBLS WATER 71 BBLS OF 15% HCL CONTAINING 18 GAL ACID CORROSION INHIBITOR 9 GAL EP-3 NON EMULSION INHIBITOR 45 GALLONS LCA LIQUID CITRIC ACID 45 GALLONS PETROSOL FINAL ESTABLISHED INJECTION RATE 5 BPM @ 1450 PSIG PUMPING 65 BBLS OF WATER FLUSH SHUTDOWN AND RECORD SHUT-IN PRESSURES INITIAL 1450 PSIG AFTER 5 MINUTES 1425 PSIG AFTER 10 MINUTES 1400 PSIG AND AFTER 15 MINUTES 1400 PSIG MAINTAINED 350 PSIG IN ANNULUS DURING OPERATION

INSTALL LUBRICATOR AND LUBRICATE IN 3-1/2" TWC IN FRAC HANGER PROFILE TEST FRAC TREE FLANGE CONNECTIONS TO 8000 PSIG HELD OKAY REMOVE TWC AND LUBRICATOR

SECURE WELL AND LOCATION

TRAVEL TO KEY YARD

Report Start Date: 7/3/2013

Com

TRAVEL TO LOCATION

SM JSA DISCUSS SPOTTING EQUIPMENT EMERGENCY EVACUATION PROCEDURE ADJACENT WELL BORES PRESSURIZED SYSTEMS DO NOT STEP ON LINES CABLES HOSES OR UNEVEN GROUND USE SPOTTER WHEN BACKING UP EQUIPMENT STAY CLEAR OF PINCH POINTS BETWEEN TRUCKS AND EQUIPMENT REVIEW EVACUATION PROCEDURE

SPOT FRAC EQUIPMENT

RU FRAC LINES AND EQUIPMENT



Summary Report

Major Rig Work Over (MRWO)
Completion - Reconfigure
Job Start Date: 6/20/2013
Job End Date: 7/12/2013

Well Name HARRISON, B.F. 'B' 002		Lease Harrison, B.F. 'B'	Field Name Teague North	Business Unit Mid-Continent	
Ground Elevation (ft) 3,310.00	Original RKB (ft) 3,329.00	Current RKB Elevation		Mud Line Elevation (ft)	Water Depth (ft)

Com

PRIME UP EQUIPMENT SET AND PRESSURE TEST RELIEF VALVE @ 8500 PSIG HELD OKAY

INITIAL STABILIZED INJECTION RATE 18 BPM @ 4432 PSIG WATER SG 8.23 PPG CASING PRESSURE 297 PSIG 3500 GAL PRE-PAD GEL VISCOSITY 16 INCREASE VISCOSITY TO 22 PUMP RATE TO 39 GPM TUBING PRESSURE 5500 PSIG CASING PRESSURE 315 PSIG 3500 GAL ADDITIONAL PRE-PAD MAINTAIN RATE 40 BPM @ 6560 PSIG TO COMPLETE PAD VOLUME OF 13,986 GAL START .5# SAND @ 39 BPM WITH 6570 PSIG INJECTION PRESSURE TO VOLUME OF 13,986 CASING PRESSURE 431 PSIG START 1.5# SAND @ RATE OF 39.4 BPM FOR A VOLUME OF 11,715 GALLONS GEL VISCOSITY 22 CASING PRESSURE 476 PSIG START 2.5# SAND AT RATE 39.6 BPM TUBING PRESSURE 6510 PSIG CASING PRESSURE 476 PSIG FOR A VOLUME OF 11,609 GALLONS START 3.5# SAND AT A RATE OF 39.7 BPM 6780 PSIG TUBING PRESSURE VOLUME 11,377 GALLONS START 4.5# SAND @ RATE 39.5 BPM 7263 TUBING PRESSURE VOLUME 5760 GALLONS START RESIN COATED SAND @ RATE OF 36.7 BPM 7263 PSIG TUBING PRESSURE VOLUME 6767 GALLONS CASING PRESSURE 676 PSIG FLUSH @ RATE OF 36.7 BPM 7263 TUBING PRESSURE VOLUME 3742 GALLONS SHUT WELL IN AND RECORD PRESSURE 3815 PSIG AFTER 5 MIN 3199 PSIG AFTER 10 MIN 2812 AFTER 15 MIN 2528 PSIG

RD LINES AND EQUIPMENT

SECURE WELL AND LOCATION

TRAVEL TO KEY YARD

Report Start Date: 7/5/2013

Com

CHECK PRESSURES 0 PSIG TUBING AND 0 PSIG CASING RU LINES AND MANIFOLD

FLOW BACK WELL ON VACUUM REMOVE EXCESS WATER

SHUT IN WELL RD FLOWBACK LINE

SECURE WELL AND LOCATION

Report Start Date: 7/6/2013

Com

NU ADAPTER FLANGE ON FRAC VALVE RU CRANE E-LINE LUBRICATOR AND EQUIPMENT

PRESSURE TEST LUBRICATOR 5000 PSIG HELD OKAY

TIH TAG FILL @ 6160'

RD ELINE LUBRICATOR AND EQUIPMENT

SECURE WELL AND LOCATION

Report Start Date: 7/8/2013

Com

TRAVEL TO LOCATION

SM JSA DISCUSS CHECK PRESSURES ND FRAC VALVE RELEASE PACKER LD TUBING USE THREE POINT CONTACT WHEN GOING UP AND DOWN STAIRS DO NOT STEP ON LINES CABLES HOSES OR UNEVEN GROUND INSPECT SCE AND LIFT EQUIPMENT PRIOR TO USE KNOW WEIGHTS OF LOADS USE TAG LINE STAY CLEAR OF SUSPENDED LOADS KEEP HANDS AND FINGERS CLEAR OF MOVING EQUIPMENT SUCH AS TONGS ELEVATORS SLIPS AND PIUPE AND RAILING SET UP STRIKE ZONE FOR LD MACHINE

CHECK PRESSURES 0 PSIG CASING AND TUBING CHECK FLUID LEVELS START RIG AND EQUIPMENT SET COF LIMITS

RD FRAC VALVE TUBING ADAPTER AND TREE RELEASE PACKER INSTALL STRIPPING HEAD

INSTALL LD MACHINE AND PIPE RACKS

LD 3-1/2" TUBING

LUNCH BREAK

LD 3-1/2" TUBING

LD PACKER BHA

MOVE 3-1.2" TUBING FROM RACKS AND LOAD ON TRUCKS

CHANGE OUT PIPE RAMS TO 2-7/8" EUE 8RD

SECURE WELL AND LOCATION

TRAVEL TO KEY YARD

Report Start Date: 7/9/2013

Com

TRAVEL TO LOCATION.

PJSM, JSA

CHANGE OUT PIPE RAMS AND ELEVATORS TO 2 7/8". PU 7 " PKR WITH ONE JOINT OF 2 7/8" TUBING AND SET BELOW WH @ 25'. TEST BOP PIPE RAMS TO 250/1000 PSI. PRESSURES HELD. RELEASED AND L/D PKR.

JSA FOR RUNNING TUBING. P/U 6 1/8" MT BIT AND GIH WITH 197 JOINTS OF 2 7/8" 6.5 J-55 EVE 8RD PRODUCTION TUBING TO 6155' AND TAG TOP OF FILL.

BROKE CIRCULATION WITH 115 BBLs OF 8.6 BRINE.

WHEN N/U STRIPPER HEAD, IT WAS NOTICED THE BOP WAS LEAKING. P/O 4 JTS TO 6014', REPLACED DOOR GASKETS IN BOP. LOADED HOLE WITH 8.6 PPG BRINE, NO LEAKS WERE OBSERVED. SHUT IN WELL, SDON.

TRAVEL TIME FROM LOCATION.

Report Start Date: 7/10/2013

Com

CREW TRAVEL TO LOCATION.



Summary Report

Major Rig Work Over (MRWO)
Completion - Reconfigure
Job Start Date: 6/20/2013
Job End Date: 7/12/2013

Well Name HARRISON, B.F. 'B' 002		Lease Harrison, B.F. 'B'		Field Name Teague North		Business Unit Mid-Continent	
Ground Elevation (ft) 3,310.00	Original RKB (ft) 3,329.00	Current RKB Elevation			Mud Line Elevation (ft)	Water Depth (ft)	

Com
PJSM, JSA
R/U ROTATING HEAD.
BROKE CIRCULATION WITH 90 BBLS OF 8.6 BRINE. CLEAN OUT FILL FROM 6155 TO 6296.
R/D ROTATING HEAD
TOH, STAND BACK 2 7/8 PRODUCTION/ WS, LD BIT.
P/U RETRIEVAL TOOL, TIH, WASHED OUT SAND ABOVE PKR, LATCHED ONTO & UNSET RBP AT 6300', TOH, LD RBP. SHUT IN WELL, SDON.
TRAVEL FROM LOCATION.
Report Start Date: 7/11/2013
Com
CREW TRAVEL TO LOCATION.
PJSM, JSA
JSA/ HYDROTESTERS, R/U TESTER. MAKE UP BHA AND RIH WITH 2 7/8" PRODUCTION TUBING TESTING STRING TO 6,000 PSI. R/D HYDROTESTERS.
N/D BOP, SET TAC W/ 27" STRETCH & 20 POINTS. CHANGE OUT TBG EQUIP. WITH ROD EQUIP.
RIH WITH 1- 25-1.50 RHBM PUMP, 1- 4X 7/8 GUIDE SUB, 12- 1 1/2" K-BARS, 140- 7/8" RODS D-90, 95-1" RODS D-90, 1-1" SUB D-90, 1 POLISH ROD 1 1/2X. SPACED OUT PUMP. SDON.
CREW TRAVEL FROM LOCATION.
Report Start Date: 7/12/2013
Com
CREW TRAVEL TO LOCATION
PJSM, JSA
SPACE OUT PUMP TO 10" OFF BOTTOM, LOAD TEST WITH 9BBLS, TEST GOOD, CHECK PUMP ACTION, GOOD, PUMP 40 BBLS DOWN CSG, 5 GAL BIOCID/20 GAL SOAP.
R/D UNIT, MOVE TO NEXT LOCATION.
...FINAL REPORT...

WELL DATA SHEET

FIELD: N. Teague

WELL NAME: B. F. Harrison "B" #2

FORMATION: Wolfcamp

LOC: 1980' FNL & 1800' FWL

SEC: 9

GL: 3310'

CURRENT STATUS: SI

TOWNSHIP: 23S

COUNTY: Lea

KB: 3329'

API NO: 30-025-30568

RANGE: 37E

STATE: NM

DF:

REFNO: IS7885

LOT: F

TYPE LEASE: Fee

CURRENT

Surface Casing

13-3/8", 54.5#, K-55 Csg

Hole size: 17-1/2"

Set @ 1175' w/1400 sx cmt.

Circ 300 sx cmt to surf

Date Spud: 3/10/89

Date Completed: 4/25/89

Initial Formation: Ellenburger

Intermediate Casing

9-5/8", 40#, S-80 & J-55 Csg

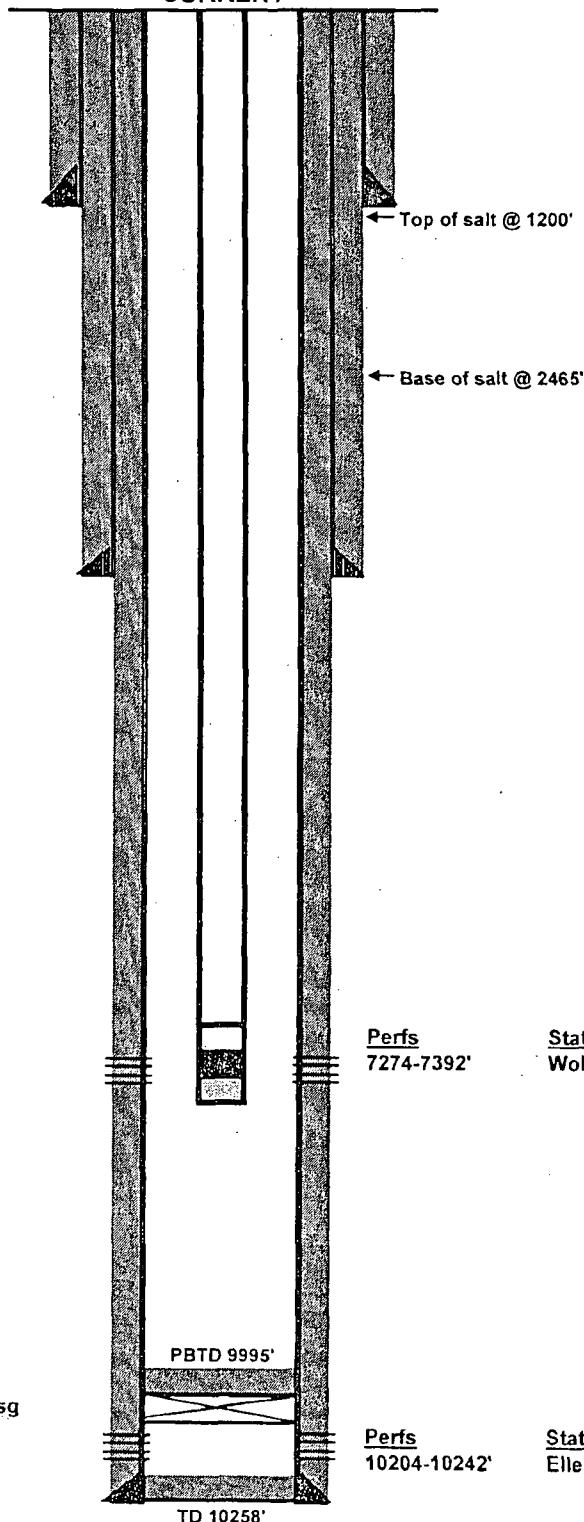
Hole size: 12-1/4"

Set @ 3750' w/1550 sx cmt

Did not circ cmt to surf

Tubing Detail - 11/29/99

2-7/8" landed @ 7400'



Perfs
7274-7392'

Status
Wolfcamp - open

Production Casing

7", 23# & 26#, L-80 & K-55 Csg

Hole size: 8-3/4"

Set @ 10258' w/1100 sx cmt

Did not circ cmt to surf

Perfs
10204-10242'

Status
Ellenburger - below CIBP