

Submit 1 Copy To Appropriate District  
Office  
District I - (575) 393-6161  
1625 N. French Dr., Hobbs, NM 88240  
District II - (575) 748-1283  
811 S. First St., Artesia, NM 88210  
District III - (505) 334-6178  
1000 Rio Brazos Rd., Aztec, NM 87410  
District IV - (505) 476-3460  
1220 S. St. Francis Dr., Santa Fe, NM  
87505

State of New Mexico

Energy, Minerals and Natural Resources

Form C-103

Revised July 18, 2013

HOBBS OGD

OCT 25 2013

OIL CONSERVATION DIVISION

1220 South St. Francis Dr.  
Santa Fe, NM 87505

RECEIVED

WELL API NO.  
30-025-41336

5. Indicate Type of Lease

STATE ☐ FEE ☐

6. State Oil & Gas Lease No.

7. Lease Name or Unit Agreement Name

NORTHEAST DRINKARD UNIT

8. Well Number

844

9. OGRID Number

873

10. Pool name or Wildcat

EUNICE; BLI-TU-DR, NORTH

SUNDRY NOTICES AND REPORTS ON WELLS

(DO NOT USE THIS FORM FOR PROPOSALS TO DRILL OR TO DEEPEN OR PLUG BACK TO A DIFFERENT RESERVOIR. USE "APPLICATION FOR PERMIT" (FORM C-101) FOR SUCH PROPOSALS.)

1. Type of Well: Oil Well ☒ Gas Well ☐ Other ☐

2. Name of Operator

APACHE CORPORATION

3. Address of Operator

303 Veterans Airpark Lane, Ste 3000, Midland, TX 79705

4. Well Location

Unit Letter A : 1215 feet from the NORTH line and 465 feet from the EAST line

Section 22

Township 21S

Range 37E

NMPM

County LEA

11. Elevation (Show whether DR, RKB, RT, GR, etc.)

3406'

12. Check Appropriate Box to Indicate Nature of Notice, Report or Other Data

NOTICE OF INTENTION TO:

PERFORM REMEDIAL WORK ☐

PLUG AND ABANDON ☐

TEMPORARILY ABANDON ☐

CHANGE PLANS ☐

PULL OR ALTER CASING ☐

MULTIPLE COMPL ☐

DOWNHOLE COMMINGLE ☐

CLOSED-LOOP SYSTEM ☐

OTHER: ☒ SHL CHANGE

SUBSEQUENT REPORT OF:

REMEDIAL WORK ☐

ALTERING CASING ☐

COMMENCE DRILLING OPNS. ☐

P AND A ☐

CASING/CEMENT JOB ☐

OTHER: ☐

13. Describe proposed or completed operations. (Clearly state all pertinent details, and give pertinent dates, including estimated date of starting any proposed work). SEE RULE 19.15.7.14 NMAC. For Multiple Completions: Attach wellbore diagram of proposed completion or recompletion.

EFFECTIVE 10/24/2013: APACHE REQUEST THE FOLLOWING CHANGES TO THE SHL:

FROM: 1215 FNL & 545 FEL

TO: 1215 FNL & 465 FEL

PLEASE NOTE: CLOSED LOOP SYSTEM WILL BE USED

Spud Date:

Rig Release Date:

I hereby certify that the information above is true and complete to the best of my knowledge and belief.

SIGNATURE

*Nichelle Cooper*

TITLE

*Dr. Tech*

DATE

*10-24-13*

Type or print name

E-mail address:

PHONE:

For State Use Only

Petroleum Engineer

APPROVED BY:

TITLE

DATE

*OCT 25 2013*

Conditions of Approval (if any):

*OCT 25 2013*

DISTRICT I  
1625 N. French Dr., Hobbs, NM 88240  
Phone (505) 393-8181 Fax: (505) 393-0720

DISTRICT II  
811 S. First St., Artesia, NM 88210  
Phone (505) 748-1283 Fax: (505) 748-9720

DISTRICT III  
1000 Rio Brazos Rd., Aztec, NM 87410  
Phone (505) 334-6178 Fax: (505) 334-6170

DISTRICT IV  
1220 S. St. Francis Dr., Santa Fe, NM 87505  
Phone (505) 476-3460 Fax: (505) 476-3462

State of New Mexico  
Energy, Minerals and Natural Resources Department

Form C-102  
Revised August 1, 2011

Submit one copy to appropriate  
District Office

OIL CONSERVATION DIVISION  
1220 South St. Francis Dr.  
Santa Fe, New Mexico 87505

RECEIVED LOCATION AND ACREAGE DEDICATION PLAT

☐ AMENDED REPORT

API Number <b>30-025-41336</b>	Pool Code <b>22900</b>	Pool Name <b>Eunice j BLI-TU-DR, North</b>
Property Code <b>22503</b>	Property Name <b>NORTHEAST DRINKARD UNIT</b>	Well Number <b>844</b>
OGRID No. <b>873</b>	Operator Name <b>APACHE CORPORATION</b>	Elevation <b>3406'</b>

Surface Location

UL or lot No.	Section	Township	Range	Lot Idn	Feet from the	North/South line	Feet from the	East/West line	County
A	22	21 S	37 E		1215	NORTH	465	EAST	LEA

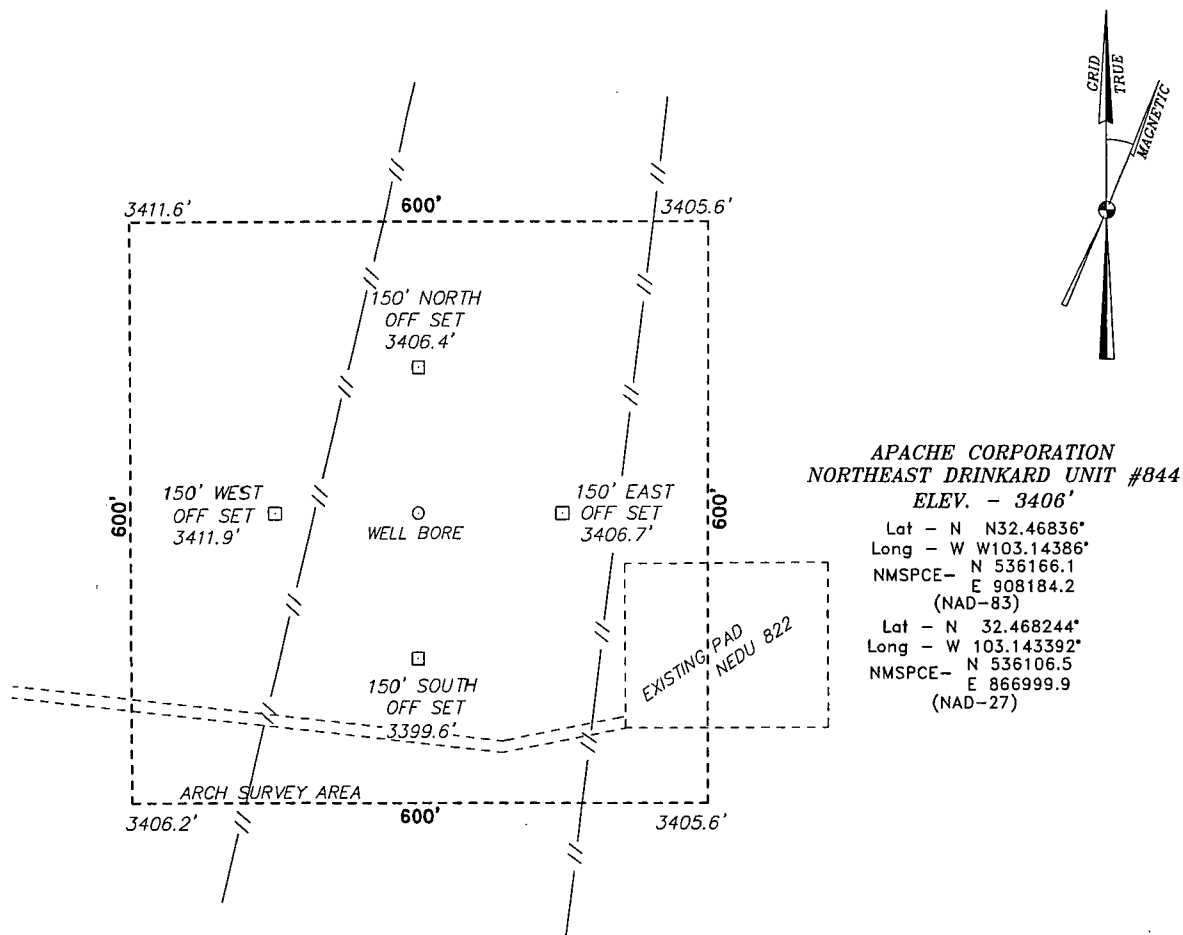
Bottom Hole Location If Different From Surface

UL or lot No.	Section	Township	Range	Lot Idn	Feet from the	North/South line	Feet from the	East/West line	County
A	22	21 S	37 E		1215	NORTH	815	EAST	LEA
Dedicated Acres	Joint or Infill	Consolidation Code	Order No.						

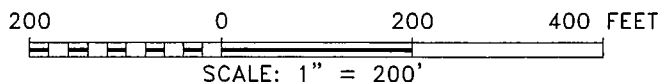
NO ALLOWABLE WILL BE ASSIGNED TO THIS COMPLETION UNTIL ALL INTERESTS HAVE BEEN CONSOLIDATED  
OR A NON-STANDARD UNIT HAS BEEN APPROVED BY THE DIVISION

<p>SPK NL</p> <p>Lat - N 32.47169° Long - W 103.15900° NMSPC-E 537321.5 E 903346.5 (NAD-83)</p> <p>Lat - N 32.47157° Long - W 103.15903° NMSPC-E 537321.5 E 862162.2 (NAD-27)</p>	<p>BC</p> <p>Lat - N 32.47168° Long - W 103.15900° NMSPC-E 537348.3 E 906000.7 (NAD-83)</p> <p>Lat - N 32.47156° Long - W 103.15043° NMSPC-E 537288.5 E 864816.5 (NAD-27)</p>	<p>BC</p> <p>Lat - N 32.47171° Long - W 103.14236° NMSPC-E 537387.9 E 908635.2 (NAD-83)</p> <p>Lat - N 32.47159° Long - W 103.14189° NMSPC-E 537328.2 E 867450.9 (NAD-27)</p> <p>1215' 465' 815'</p> <p>B.H. S.L.</p>	<p><b>OPERATOR CERTIFICATION</b></p> <p>I hereby certify that the information contained herein is true and complete to the best of my knowledge and belief, and that this organization either owns a working interest or unleased mineral interest in the land including the proposed bottom hole location or has a right to drill this well at this location pursuant to a contract with an owner of such a mineral or working interest, or to a voluntary pooling agreement or a compulsory pooling order heretofore entered by the division.</p> <p><i>Michelle Cooper</i> 10-24-13 Signature Date</p> <p><i>Michelle Cooper</i> Printed Name</p> <p><i>Michelle.cooper@apachecorp.com</i> Email Address</p>
<p>PROPOSED BOTTOM HOLE</p> <p>Lat - N 32.468339° Long - W 103.144972° NMSPC-E 536153.4 E 907841.6 (NAD-83)</p> <p>Lat - N 32.468217° Long - W 103.144503° NMSPC-E 536093.8 E 866657.3 (NAD-27)</p>	<p>SURFACE LOCATION</p> <p>Lat - N 32.46836° Long - W 103.14386° NMSPC-E 536166.1 E 908184.2 (NAD-83)</p> <p>Lat - N 32.468244° Long - W 103.143392° NMSPC-E 536106.5 E 866999.9 (NAD-27)</p>	<p>BC</p> <p>Lat - N 32.46445° Long - W 103.14235° NMSPC-E 534747.0 E 908665.3 (NAD-83)</p> <p>Lat - N 32.46433° Long - W 103.14188° NMSPC-E 534687.4 E 867481.0 (NAD-27)</p>	<p><b>SURVEYOR CERTIFICATION</b></p> <p>I hereby certify that the well location shown on this plat was plotted from field notes of actual surveys made by me or under my supervision, and that the same is true and correct to the best of my belief.</p> <p>10-24-13 Date Surveyed</p> <p><i>Michelle Cooper</i> Signature</p> <p>Seal of Professional Surveyor 7977</p> <p>Certified Professional Land Surveyor 7977</p> <p>BAIRD SURVEYS</p> <p>0' 500' 1000' 1500' 2000'</p> <p>SCALE: 1" = 1000' WO Num.: 29635</p>
<p>Lat - N 32.45715° Long - W 103.15947° NMSPC-E 532034.1 E 903415.7 (NAD-83)</p> <p>Lat - N 32.45703° Long - W 103.15900° NMSPC-E 531974.2 E 862231.3 (NAD-27)</p>	<p>BC</p> <p>Lat - N 32.45717° Long - W 103.15089° NMSPC-E 532068.8 E 906062.1 (NAD-83)</p> <p>Lat - N 32.45705° Long - W 103.15042° NMSPC-E 532009.1 E 864877.7 (NAD-27)</p>	<p>BC</p> <p>Lat - N 32.45719° Long - W 103.14234° NMSPC-E 532106.0 E 908698.4 (NAD-83)</p> <p>Lat - N 32.45707° Long - W 103.14187° NMSPC-E 532046.5 E 867514.0 (NAD-27)</p>	

SECTION 22, TOWNSHIP 21 SOUTH, RANGE 37 EAST, N.M.P.M.,  
LEA COUNTY, NEW MEXICO.

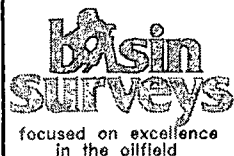


EUNICE, NM IS  $\pm 3$  MILES TO THE SOUTHEAST OF LOCATION.



Directions to Location:

FROM THE JUNCTION OF HILL AND TURNER, GO  
SOUTH 0.5 MILES TURNING EAST 0.2 MILES TO  
PROPOSED LOCATION.



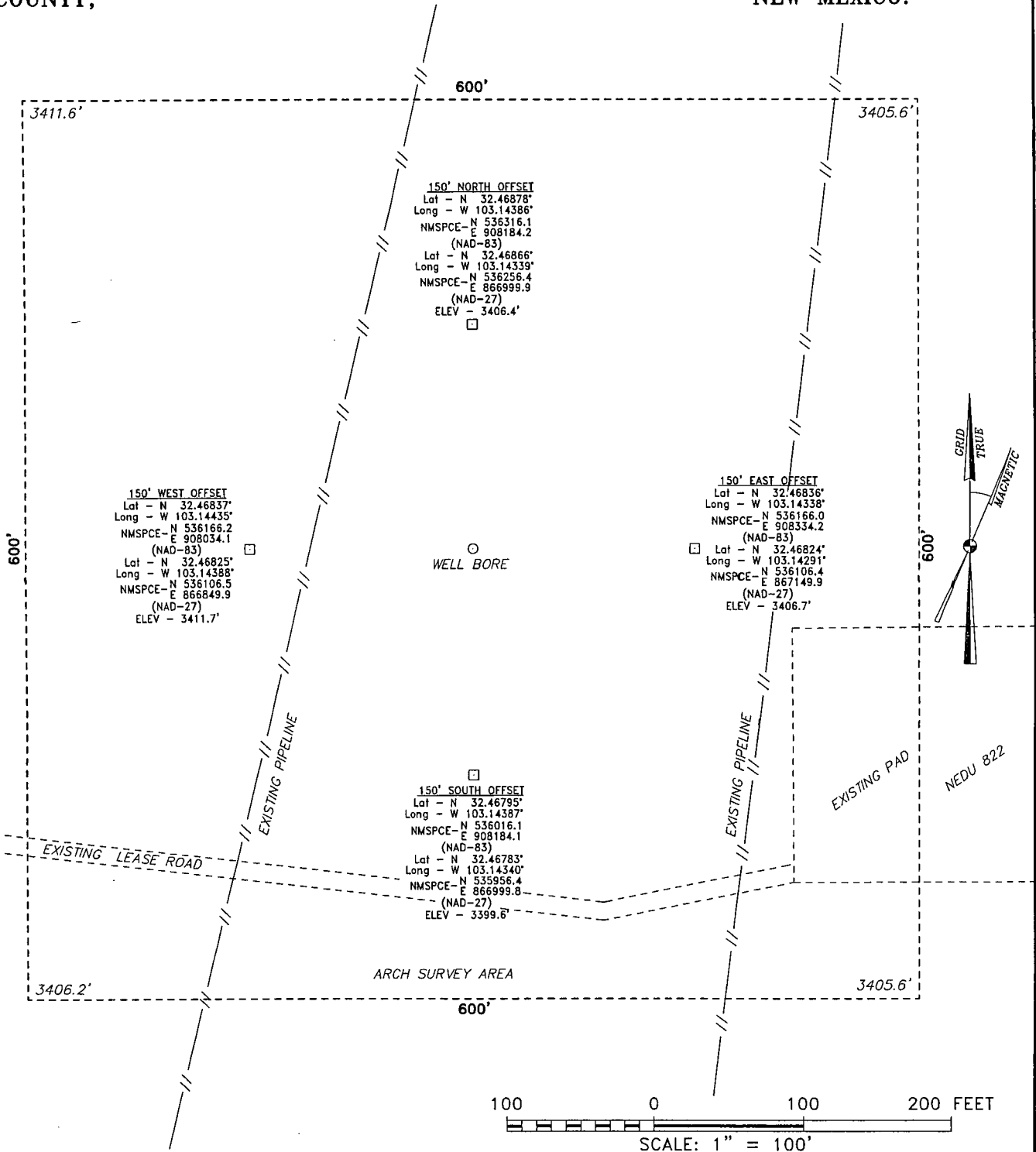
P.O. Box 1786 (575) 393-7316 - Office  
1120 N. West County Rd. (575) 392-2206 - Fax  
Hobbs, New Mexico 88241 basinsurveys.com



REF: NORTHEAST DRINKARD UNIT #844 / WELL PAD TOPO

THE NORTHEAST DRINKARD UNIT #844 LOCATED 1215' FROM  
THE NORTH LINE AND 465' FROM THE EAST LINE OF  
SECTION 22, TOWNSHIP 21 SOUTH, RANGE 37 EAST,  
N.M.P.M., LEA COUNTY, NEW MEXICO.

SECTION 22, TOWNSHIP 21 SOUTH, RANGE 37 EAST, N.M.P.M.,  
LEA COUNTY, NEW MEXICO.



**basin surveys**  
 focused on excellence  
 in the oilfield

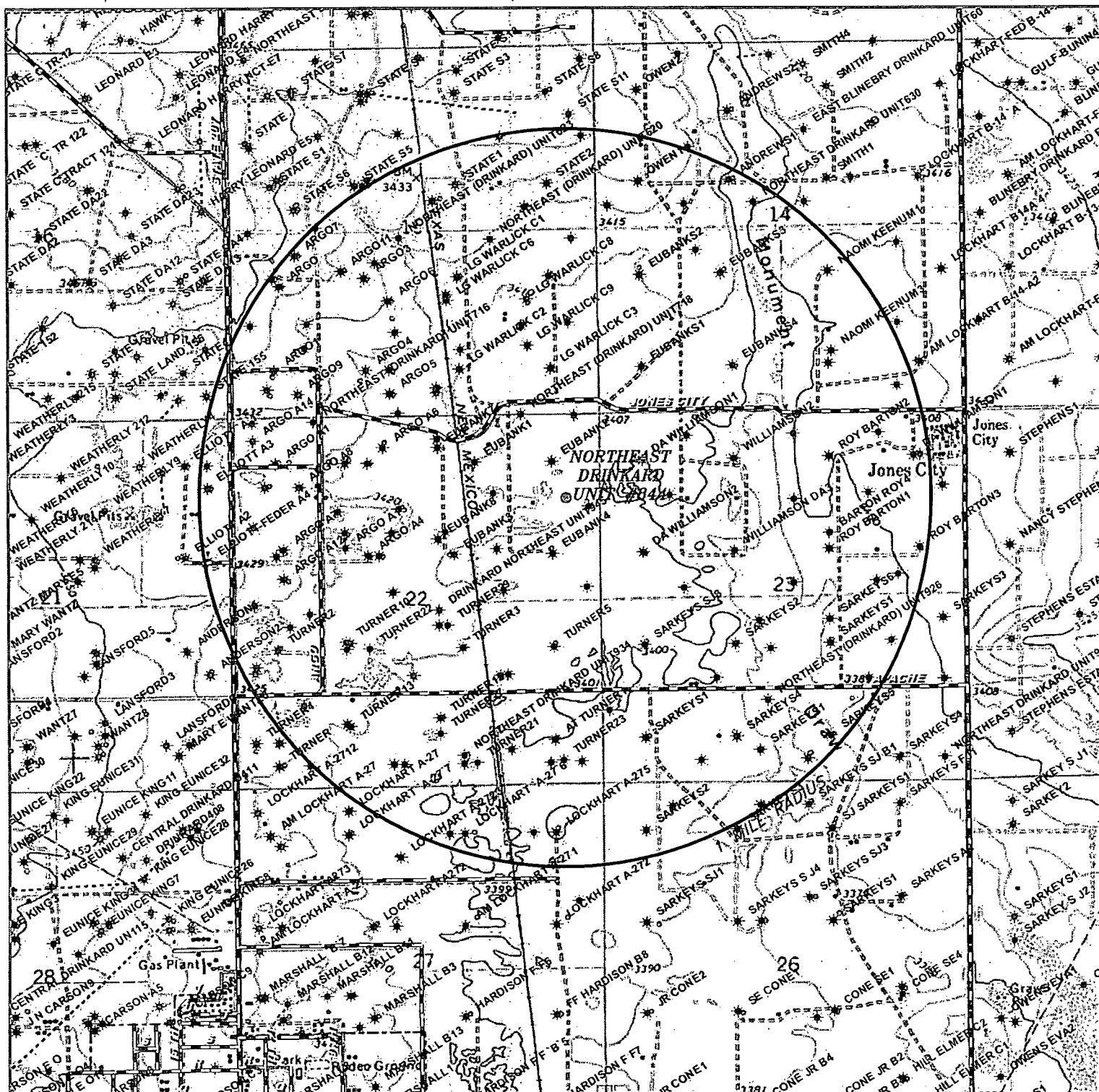
P.O. Box 1786  
 1120 N. West County Rd.  
 Hobbs, New Mexico 88241

(575) 393-7316 - Office  
 (575) 392-2206 - Fax  
 basin-surveys.com

**Apache**  
 EXPLORING WHAT'S POSSIBLE

REF: NORTHEAST DRINKARD UNIT #844 / WELL PAD TOPO

THE NORTHEAST DRINKARD UNIT #844 LOCATED 1215' FROM  
 THE NORTH LINE AND 465' FROM THE EAST LINE OF  
 SECTION 22, TOWNSHIP 21 SOUTH, RANGE 37 EAST,  
 N.M.P.M., LEA COUNTY, NEW MEXICO.



## NORTHEAST DRINKARD UNIT #844

Located 1215' FNL and 465' FEL

Section 21, Township 21 South, Range 37 East,  
N.M.P.M., Lea County, New Mexico.

**basin**  
**surveys**  
focused on excellence  
in the oilfield

P.O. Box 1786  
1120 N. West County Rd.  
Hobbs, New Mexico 88241  
(575) 393-7316 - Office  
(575) 392-2206 - Fax  
basinsurveys.com

0' 1000' 2000' 3000' 4000'

SCALE: 1" = 2000'

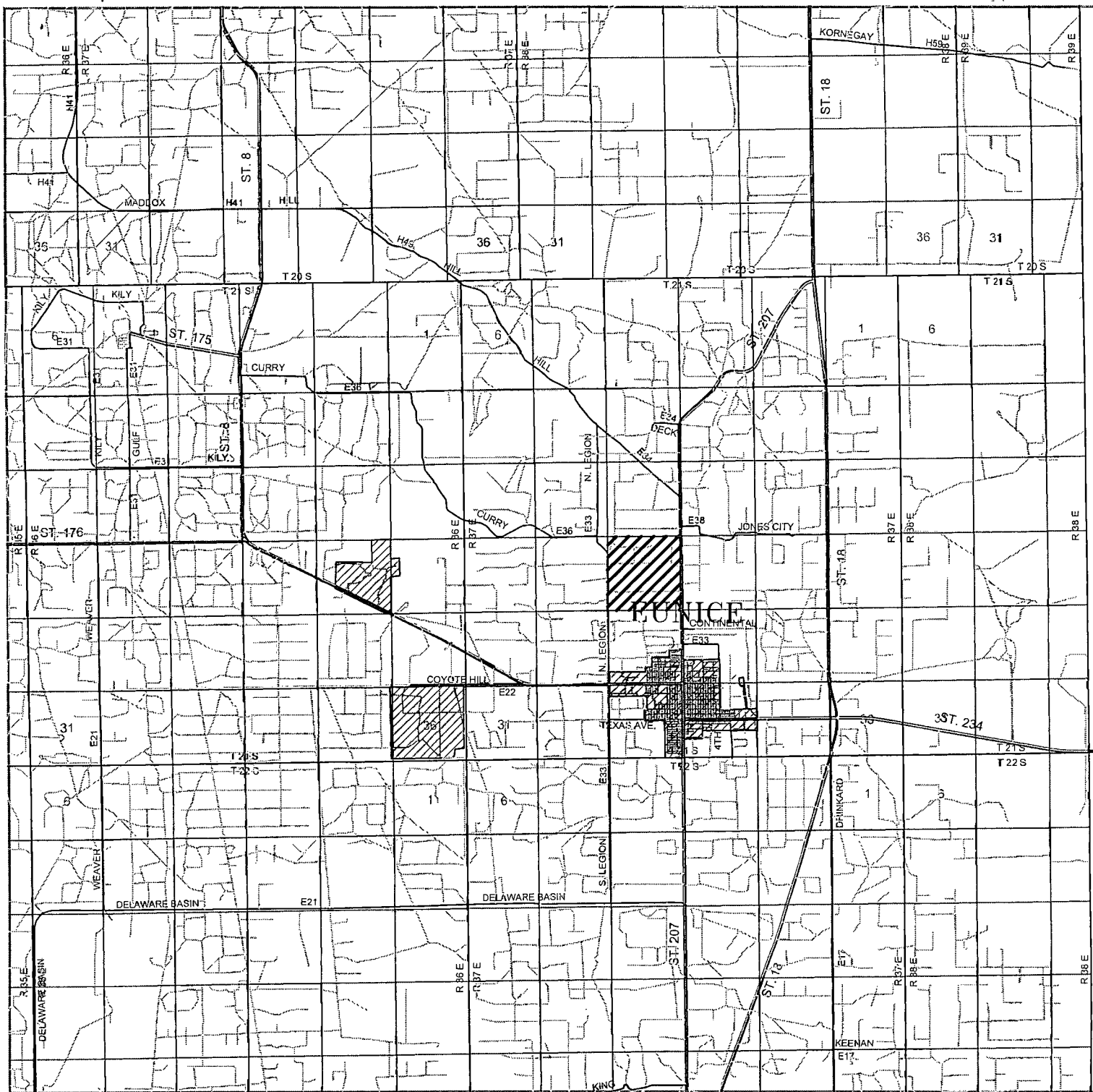
W.O. Number: JMS 29635

Survey Date: 10-21-2013

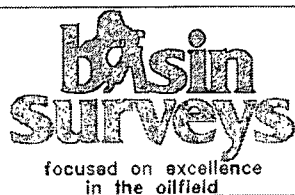
YELLOW TINT - USA LAND  
BLUE TINT - STATE LAND  
NATURAL COLOR - FEE LAND

**Apache**

EXPLORING WHAT'S POSSIBLE



**NORTHEAST DRINKARD UNIT #844**  
 Located 1215' FNL and 465' FEL  
 Section 21, Township 21 South, Range 37 East,  
 N.M.P.M., Lea County, New Mexico.



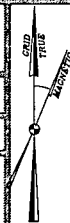
P.O. Box 1786  
 1120 N. West County Rd.  
 Hobbs, New Mexico 88241  
 (575) 393-7316 - Office  
 (575) 392-2206 - Fax  
[basinsurveys.com](http://basinsurveys.com)

0 1 MI 2 MI 3 MI 4 MI  
 SCALE: 1" = 2 MILES

W.O. Number: JMS 29635

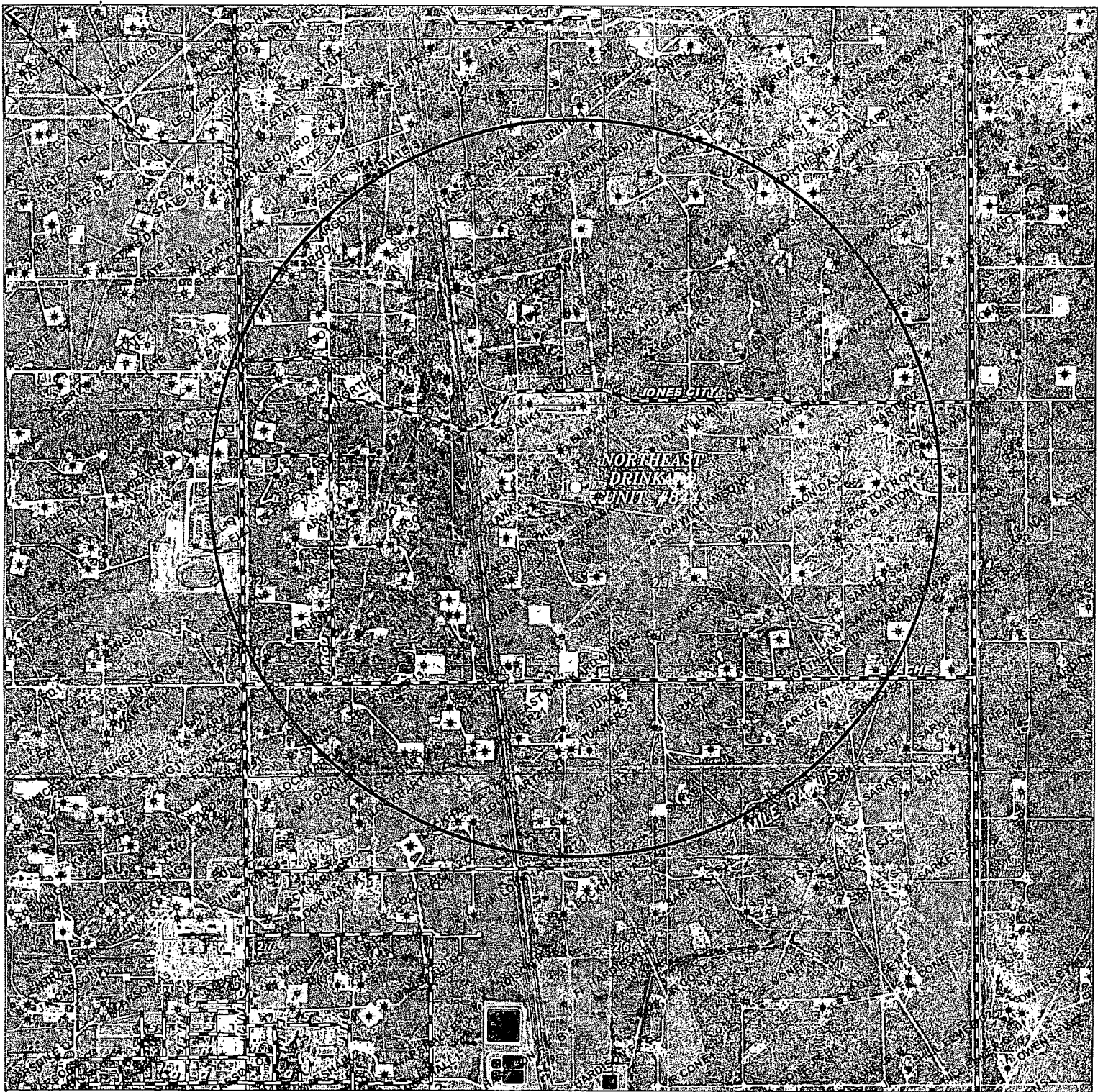
Survey Date: 10-21-2013

YELLOW TINT - USA LAND  
 BLUE TINT - STATE LAND  
 NATURAL COLOR - FEE LAND



EXPLORING WHAT'S POSSIBLE





# NORTHEAST DRINKARD UNIT #844

Located 1215' FNL and 465' FEL

Section 21, Township 21 South, Range 37 East,  
N.M.P.M., Lea County, New Mexico.

**basin**  
**surveys**  
focused on excellence  
in the oilfield

P.O. Box 1786  
1120 N. West County Rd.  
Hobbs, New Mexico 88241  
(575) 393-7316 - Office  
(575) 392-2206 - Fax  
basinsurveys.com

0' 1000' 2000' 3000' 4000'  
SCALE: 1" = 2000'

W.O. Number: JMS 29635

Survey Date: 10-21-2013

YELLOW TINT - USA LAND  
BLUE TINT - STATE LAND  
NATURAL COLOR - FEE LAND

**Apache**

EXPLORING WHAT'S POSSIBLE