

District I  
1625 N. French Dr., Hobbs, NM 88240  
Phone: (575) 393-6161 Fax: (575) 393-0700  
District II  
811 S. First St., Artesia, NM 88210  
Phone: (575) 748-1283 Fax: (575) 748-9720  
District III  
1000 Rio Brazos Road, Aztec, NM 87410  
Phone: (505) 334-6178 Fax: (505) 334-6170  
District IV  
1220 S. St. Francis Dr., Santa Fe, NM 87505  
Phone: (505) 476-3460 Fax: (505) 476-3462

HOBBBS OGD

OCT 23 2013

RECEIVED

State of New Mexico  
Energy, Minerals & Natural Resources Department  
OIL CONSERVATION DIVISION  
1220 South St. Francis Dr.  
Santa Fe, NM 87505

Form C-102  
Revised August 1, 2011  
Submit one copy to appropriate  
District Office

☐ AMENDED REPORT

WELL LOCATION AND ACREAGE DEDICATION PLAT

API Number 30-025-41460	Pool Code 96674	Pool Name Triple X Bone Spring, West
Property Code 305098	Property Name COPPERHEAD "18" STATE	Well Number 2H
OGRID No. 16696	Operator Name OXY USA INC.	Elevation 3569.5'

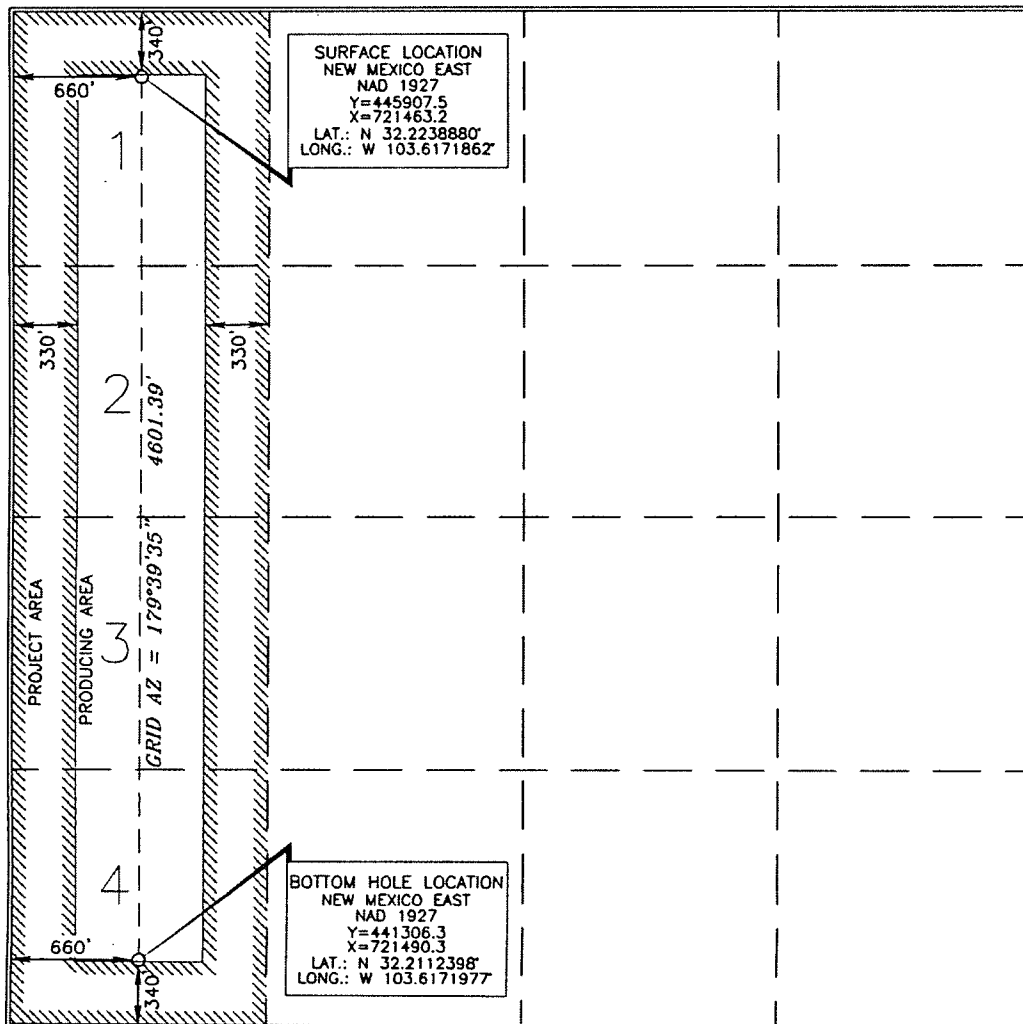
Surface Location

UL or lot no.	Section	Township	Range	Lot Idn	Feet from the	North/South line	Feet from the	East/West line	County
1	18	24 SOUTH	33 EAST, N.M.P.M.		340'	NORTH	660'	WEST	LEA

Bottom Hole Location If Different From Surface

UL or lot no.	Section	Township	Range	Lot Idn	Feet from the	North/South line	Feet from the	East/West line	County
4	18	24 SOUTH	33 EAST, N.M.P.M.		340'	SOUTH	660'	WEST	LEA
Dedicated Acres 160		Joint or Infill N	Consolidation Code	Order No.					

No allowable will be assigned to this completion until all interests have been consolidated or a non-standard unit has been approved by the division.



SURFACE LOCATION  
NEW MEXICO EAST  
NAD 1927  
Y=445907.5  
X=721463.2  
LAT.: N 32.2238880°  
LONG.: W 103.6171862°

BOTTOM HOLE LOCATION  
NEW MEXICO EAST  
NAD 1927  
Y=441306.3  
X=721490.3  
LAT.: N 32.2112398°  
LONG.: W 103.6171977°

OPERATOR CERTIFICATION

I hereby certify that the information contained herein is true and complete to the best of my knowledge and belief, and that this organization either owns a working interest or unleased mineral interest in the land including the proposed bottom hole location or has a right to drill this well at this location pursuant to a contract with an owner of such a mineral or working interest, or to a voluntary pooling agreement or a compulsory pooling order heretofore entered by the division.

Signature: *David Stewart* Date: 10/17/13  
Printed Name: David Stewart Sr. Reg. A.D.O.  
E-mail Address: david\_stewart@oxy.com

SURVEYOR CERTIFICATION

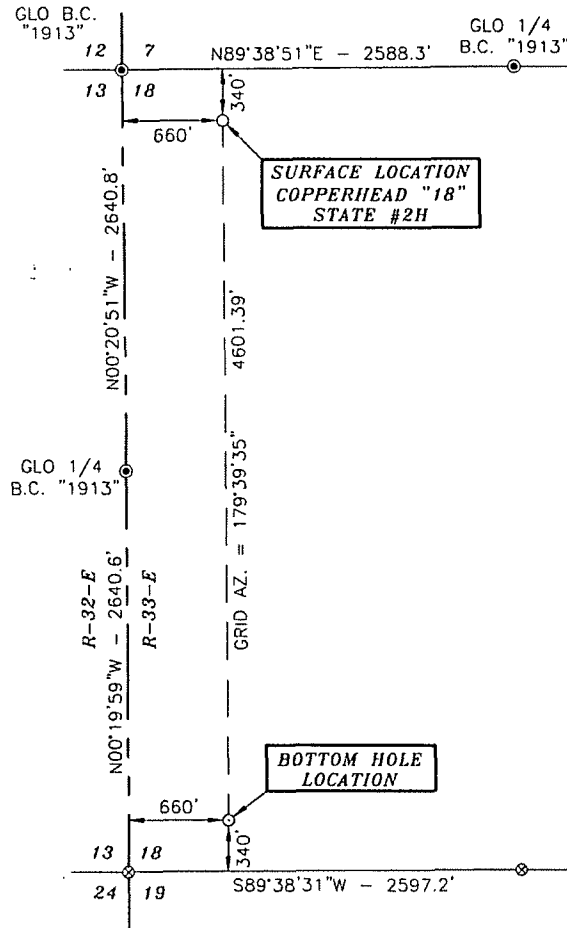
I hereby certify that the well location shown on this plat was plotted from field notes of actual surveys made by me or under my supervision, and that the same is true and correct to the best of my belief.

Date of Survey: AUGUST 27, 2013  
Signature and Seal of Professional Surveyor: *Terry J. Asa*  
Certificate Number: 15079

WO# 130827WL-a (Rev. A) (KA)

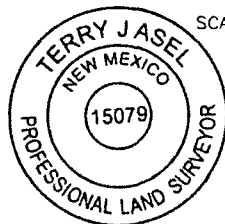
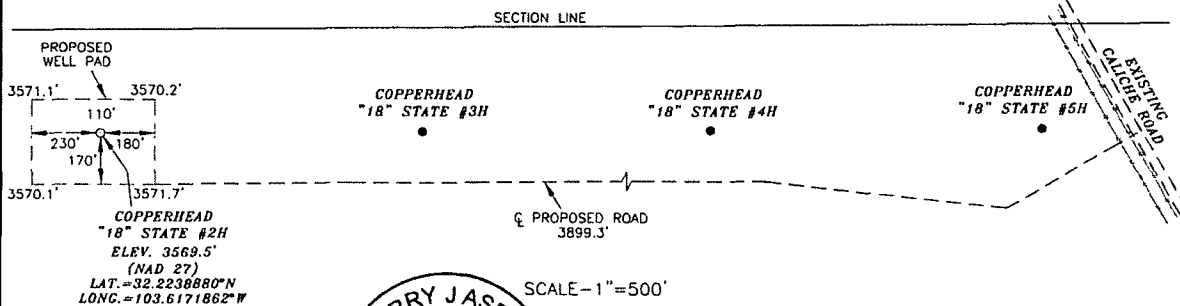
OCT 30 2013

SECTION 18, TOWNSHIP 24 SOUTH, RANGE 33 EAST, N.M.P.M.,  
LEA COUNTY  
NEW MEXICO



DRIVING DIRECTIONS:  
BEGINNING IN JAL AT THE INTERSECTION  
OF N.M. STATE HWY. 18 AND N.M. STATE  
HWY. #128, GO WEST ON N.M. STATE  
HWY. #128 FOR 25.5 MILES, TURN  
RIGHT ON CALICHE ROAD AND GO  
NORTHWEST FOR 1.1 MILES, TURN LEFT  
ON PROPOSED AND GO WEST FOR  
3899.3 FEET TO LOCATION.

North  
Basis of Bearings - GPS Geodetic Measurements  
NAD 83 North American Datum of 1983



SCALE - 1" = 500'

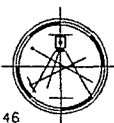
**SURVEYORS CERTIFICATE**

I, TERRY J. ASEL, NEW MEXICO PROFESSIONAL SURVEYOR  
NO. 15079, DO HEREBY CERTIFY THAT I CONDUCTED AND AM  
RESPONSIBLE FOR THIS SURVEY, THAT THIS SURVEY IS  
TRUE AND CORRECT TO THE BEST OF MY KNOWLEDGE AND  
BELIEF, AND MEETS THE "MINIMUM STANDARDS FOR  
SURVEYING IN NEW MEXICO" AS ADOPTED BY THE NEW  
MEXICO STATE BOARD OF REGISTRATION FOR  
PROFESSIONAL ENGINEERS AND SURVEYORS.

*Terry J. Asel* 9/11/2013  
Terry J. Asel N.M. R.P.L.S. No. 15079

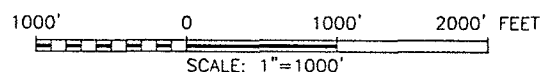
Asel Surveying

P.O. BOX 393 - 310 W. TAYLOR  
HOBBS, NEW MEXICO - 575-393-9146



**LEGEND**

- ⊙ - DENOTES FOUND MONUMENT AS NOTED
- ⊗ - DENOTES CALCULATED CORNER

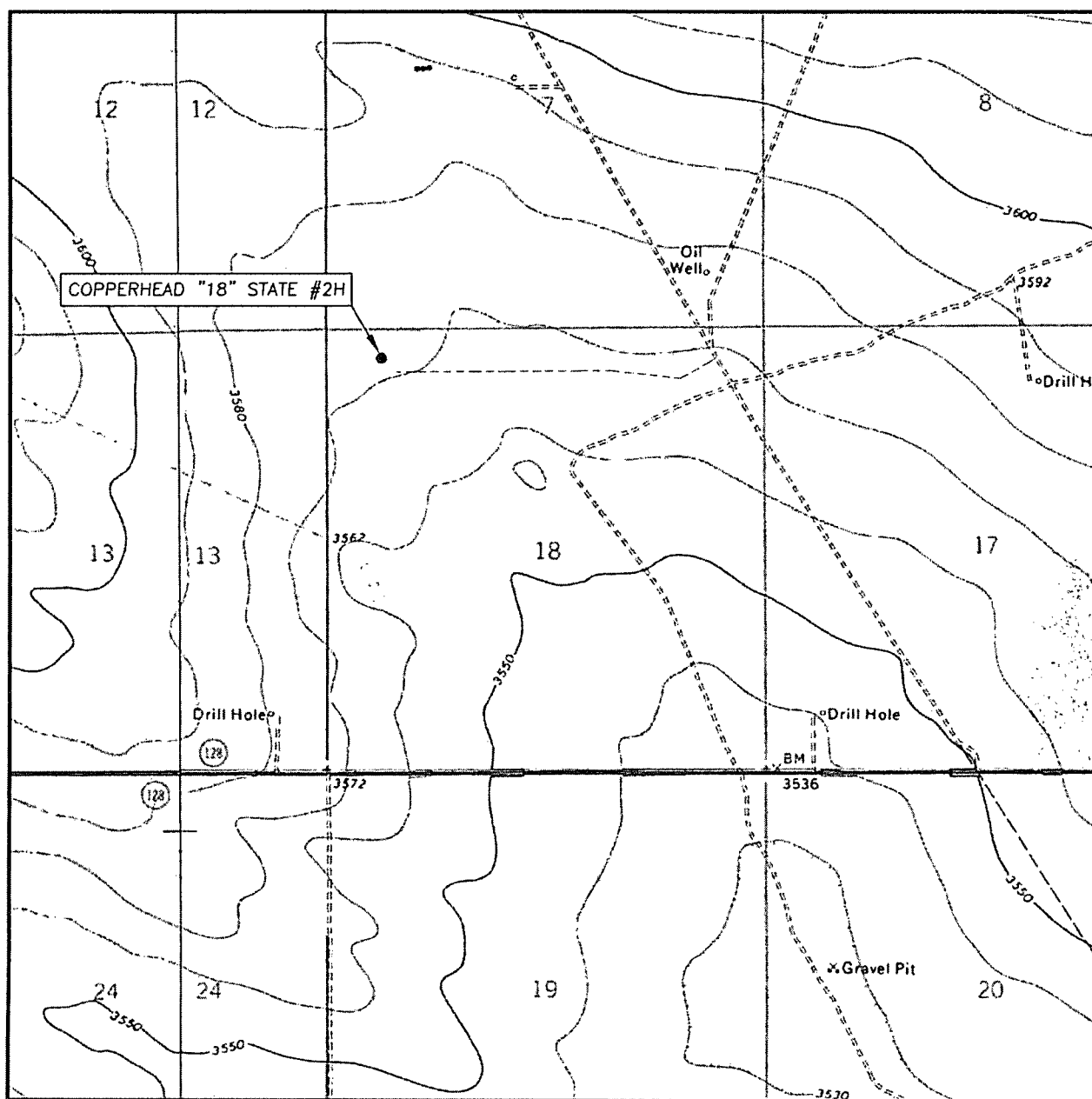


**OXY USA INC.**

COPPERHEAD "18" STATE #2H LOCATED AT  
340' FNL & 660' FWL IN SECTION 18,  
TOWNSHIP 24 SOUTH, RANGE 33 EAST,  
N.M.P.M., LEA COUNTY, NEW MEXICO

Survey Date: 08/27/13	Sheet 1 of 1 Sheets
W.O. Number: 130827WL-a (Rev. A)	Drawn By: KA Rev: A
Date: 09/10/13	130827WL-a Scale: 1"=1000'

# LOCATION VERIFICATION MAP



SCALE: 1" = 2000'

CONTOUR INTERVAL: 10'

SEC. 18 TWP. 24-S RGE. 33-E

SURVEY N.M.P.M.

COUNTY LEA

DESCRIPTION 340' FNL & 660' FWL

ELEVATION 3569.5'

OPERATOR OXY USA INC.

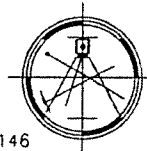
LEASE COPPERHEAD "18" STATE #2H

U.S.G.S. TOPOGRAPHIC MAP

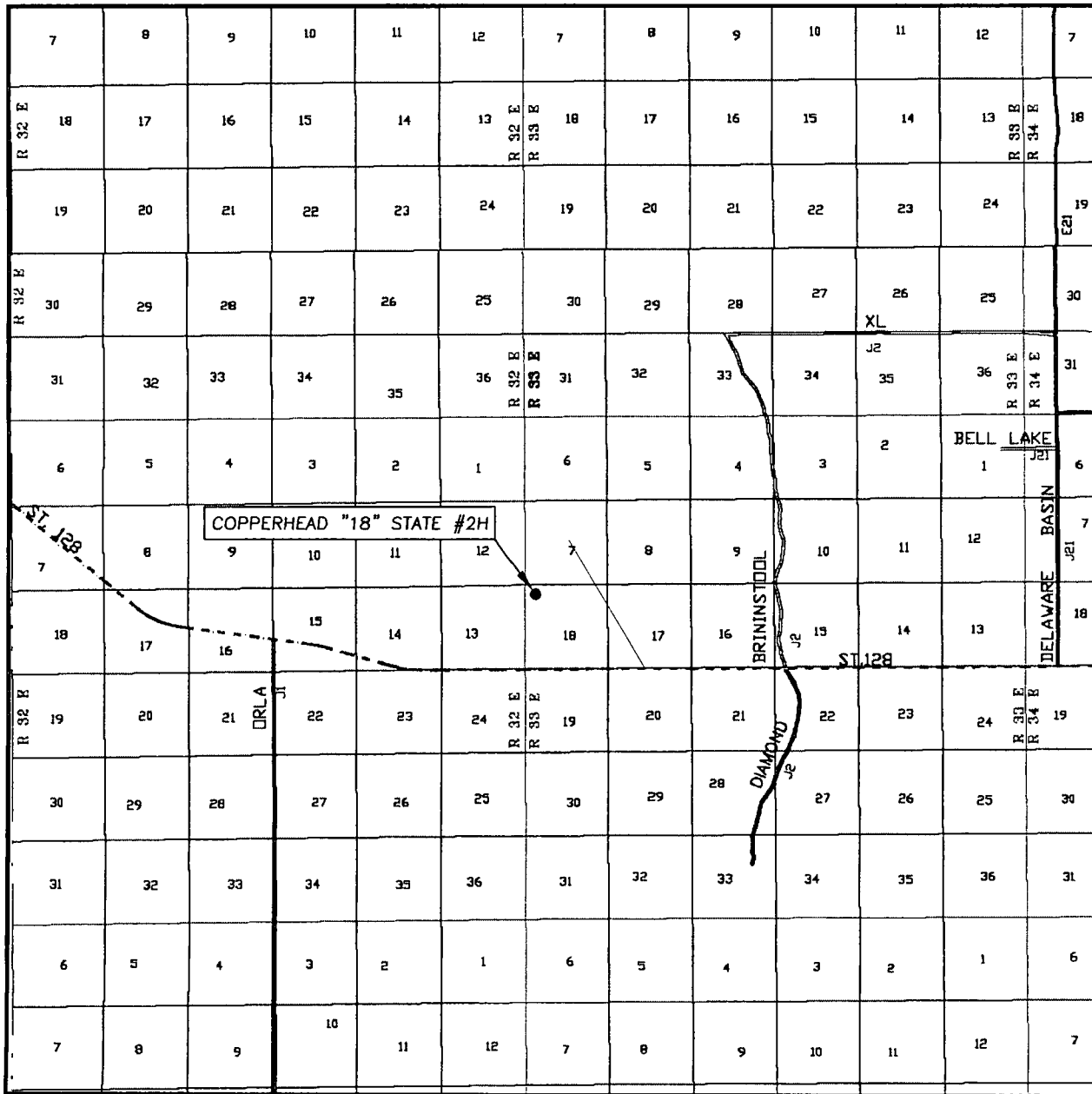
BELL LAKE, N.M.

Asel Surveying

P.O. BOX 393 - 310 W. TAYLOR  
HOBBS, NEW MEXICO - 575-393-9146



# VICINITY MAP

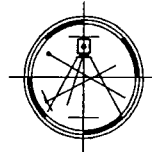


SEC. 18 TWP. 24-S RGE. 33-E  
 SURVEY N.M.P.M.  
 COUNTY LEA  
 DESCRIPTION 340' FNL & 660' FWL  
 ELEVATION 3569.5'  
 OPERATOR OXY USA INC.  
 LEASE COPPERHEAD "18" STATE #2H

SCALE: 1" = 2 MILES

Asel Surveying

P.O. BOX 393 - 310 W. TAYLOR  
 HOBBS, NEW MEXICO - 575-393-9146



DIRECTIONS BEGINNING IN JAL AT THE INTERSECTION OF N.M. STATE HWY. #18 AND N.M. STATE HWY. #128, GO WEST ON N.M. STATE HWY. #128 FOR 25.5 MILES, TURN RIGHT ON CALICHE ROAD AND GO NORTHWEST FOR 1.1 MILES, TURN LEFT ON PROPOSED ROAD AND GO WEST FOR 3899.3 FEET TO LOCATION.