

District I
1625 N. French Dr., Hobbs, NM 88240
Phone: (575) 393-6161 Fax: (575) 393-6162
District II
811 S. First St., Artesia, NM 88210
Phone: (575) 748-1283 Fax: (575) 748-9720
District III
1000 Rio Bravos Road, Aztec, NM 87401
Phone: (505) 334-6178 Fax: (505) 334-6170
District IV
1220 S. St. Francis Dr., Santa Fe, NM 87505
Phone: (505) 476-3460 Fax: (505) 476-3462

State of New Mexico
Energy, Minerals & Natural Resources Department
OIL CONSERVATION DIVISION
1220 South St. Francis Dr.
Santa Fe, NM 87505

Form C-102
Revised August 1, 2011
Submit one copy to appropriate
District Office

☐ AMENDED REPORT

WELL LOCATION AND ACREAGE DEDICATION PLAT

API Number 30-025-41461	Pool Code 96674	Pool Name Triple X Bone Springs, West
Property Code 305098	Property Name COPPERHEAD "18" STATE	Well Number 3H
OGRID No. 16694	Operator Name OXY USA INC.	Elevation 3568.3'

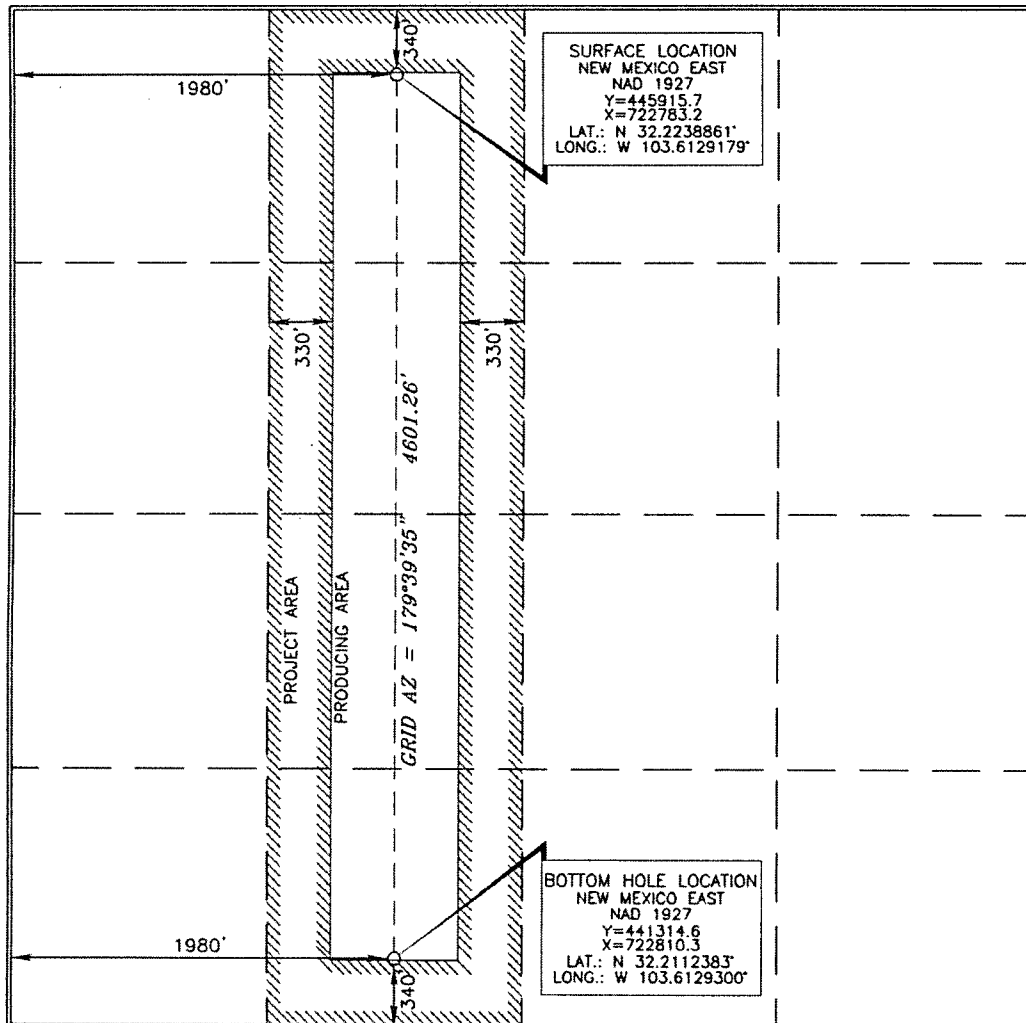
Surface Location

UL or lot no.	Section	Township	Range	Lot Idn	Feet from the	North/South line	Feet from the	East/West line	County
C	18	24 SOUTH	33 EAST, N.M.P.M.		340'	NORTH	1980'	WEST	LEA

Bottom Hole Location If Different From Surface

UL or lot no.	Section	Township	Range	Lot Idn	Feet from the	North/South line	Feet from the	East/West line	County
N	18	24 SOUTH	33 EAST, N.M.P.M.		340'	SOUTH	1980'	WEST	LEA
Dedicated Acres 160		Joint or Infill N	Consolidation Code	Order No.					

No allowable will be assigned to this completion until all interests have been consolidated or a non-standard unit has been approved by the division.



OPERATOR CERTIFICATION

I hereby certify that the information contained herein is true and complete to the best of my knowledge and belief, and that this organization either owns a working interest or unleased mineral interest in the land including the proposed bottom hole location or has a right to drill this well at this location pursuant to a contract with an owner of such a mineral or working interest, or to a voluntary pooling agreement or a compulsory pooling order heretofore entered by the division.

David Stewart 10/12/13
Signature Date
David Stewart S.R. Reg. Adv.
Printed Name
david_stewart@oxy.com
E-mail Address

SURVEYOR CERTIFICATION

I hereby certify that the well location shown on this plat was plotted from field notes of a survey made by me or under my supervision, and that the same is true and correct to the best of my belief.

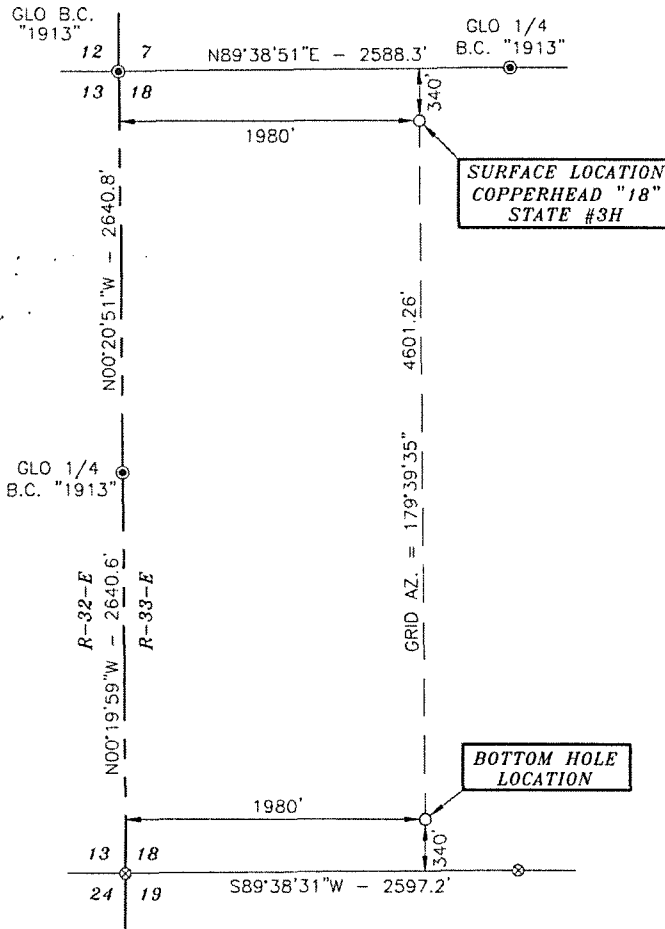
ERRY JASE
15079
AUGUST 27, 2013
Date of Survey
Signature and Seal of Professional Surveyor

Terry J. Jase 9/11/2013
Certificate Number 15079

WO# 130827WL-b (Rev. A) (KA)

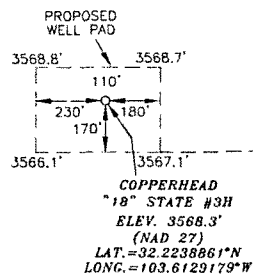
OCT 30 2013

SECTION 18, TOWNSHIP 24 SOUTH, RANGE 33 EAST, N.M.P.M.,
LEA COUNTY NEW MEXICO



DRIVING DIRECTIONS:
BEGINNING IN JAL AT THE INTERSECTION
OF N.M. STATE HWY. 18 AND N.M. STATE
HWY. #128, GO WEST ON N.M. STATE
HWY. #128 FOR 25.5 MILES, TURN
RIGHT ON CALICHE ROAD AND GO
NORTHWEST FOR 1.1 MILES, TURN LEFT
ON PROPOSED AND GO WEST FOR
2578.3 FEET TO LOCATION.

Basis of Bearings - GPS Geodetic Measurements
NM East Zone (83) North American Datum of 1983



SCALE - 1" = 500'



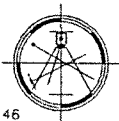
SURVEYORS CERTIFICATE

I, TERRY J. ASEL, NEW MEXICO PROFESSIONAL SURVEYOR
NO. 15079, DO HEREBY CERTIFY THAT I CONDUCTED AND AM
RESPONSIBLE FOR THIS SURVEY, THAT THIS SURVEY IS
TRUE AND CORRECT TO THE BEST OF MY KNOWLEDGE AND
BELIEF, AND MEETS THE "MINIMUM STANDARDS FOR
SURVEYING IN NEW MEXICO" AS ADOPTED BY THE NEW
MEXICO STATE BOARD OF REGISTRATION FOR
PROFESSIONAL ENGINEERS AND SURVEYORS.

Terry J. Asel 9/11/2013
Terry J. Asel, N.M. R.P.L.S. No. 15079

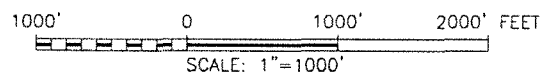
Asel Surveying

P.O. BOX 393 - 310 W. TAYLOR
HOBBS, NEW MEXICO - 575-393-9146



LEGEND

- - DENOTES FOUND MONUMENT AS NOTED
- ⊗ - DENOTES CALCULATED CORNER

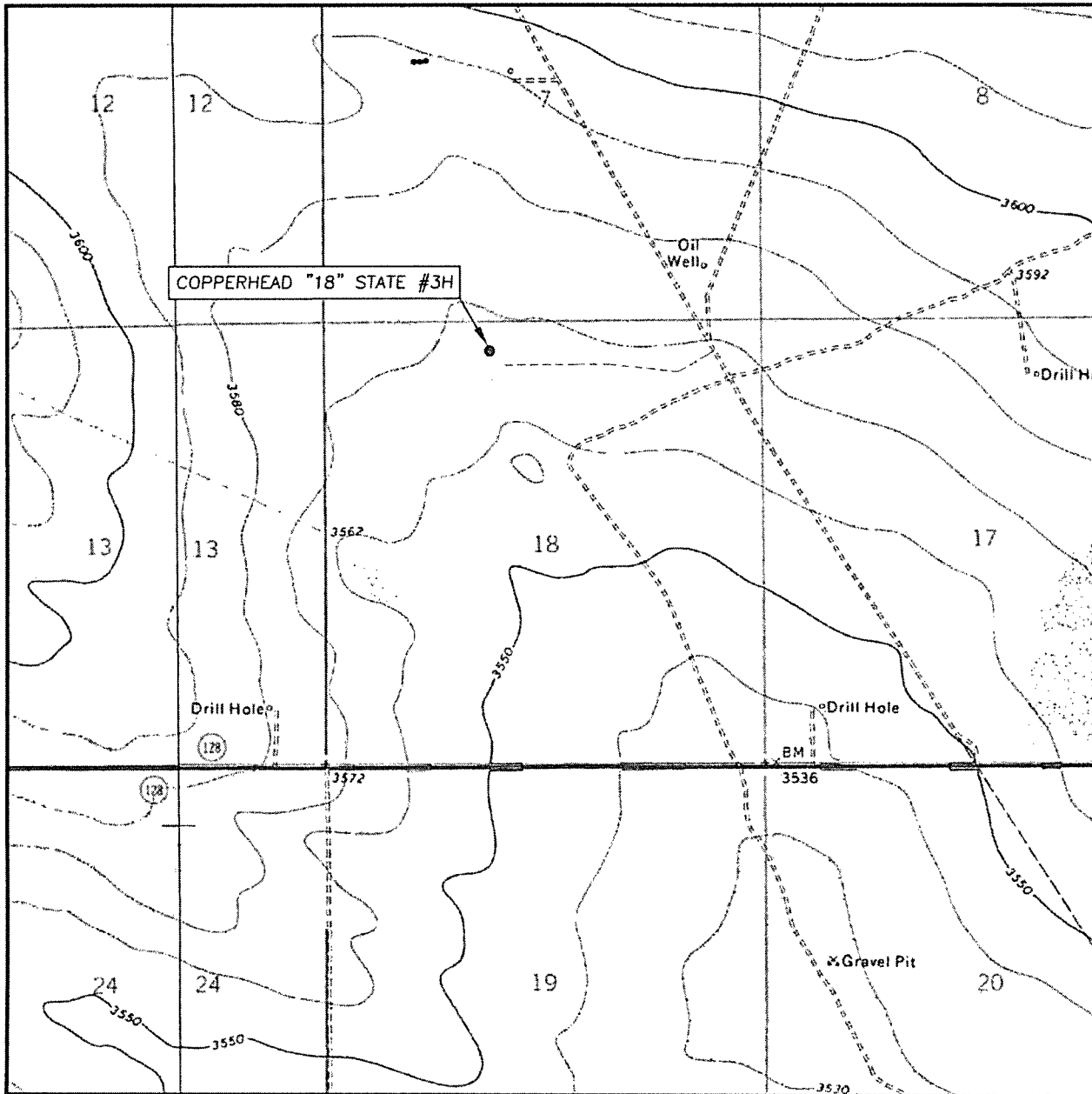


OXY USA INC.

COPPERHEAD "18" STATE #3H LOCATED AT
340' FNL & 1980' FWL IN SECTION 18,
TOWNSHIP 24 SOUTH, RANGE 33 EAST,
N.M.P.M., LEA COUNTY, NEW MEXICO

Survey Date: 08/27/13	Sheet 1 of 1 Sheets
W.O. Number: 130827WL-b (Rev. A)	Drawn By: KA Rev: A
Date: 09/10/13	130827WL-b Scale: 1" = 1000'

LOCATION VERIFICATION MAP



SCALE: 1" = 2000'

CONTOUR INTERVAL: 10'

SEC. 18 TWP. 24-S RGE. 33-E

SURVEY N.M.P.M.

COUNTY LEA

DESCRIPTION 340' FNL & 1980' FWL

ELEVATION 3568.3'

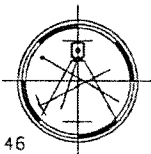
OPERATOR OXY USA INC.

LEASE COPPERHEAD "18" STATE #3H

U.S.G.S. TOPOGRAPHIC MAP
BELL LAKE, N.M.

Asel Surveying

P.O. BOX 393 - 310 W. TAYLOR
HOBBS, NEW MEXICO - 575-393-9146



VICINITY MAP



SCALE: 1" = 2 MILES

DIRECTIONS BEGINNING IN JAL AT THE INTERSECTION OF N.M. STATE HWY. #18 AND N.M. STATE HWY. #128, GO WEST ON N.M. STATE HWY. #128 FOR 25.5 MILES, TURN RIGHT ON CALICHE ROAD AND GO NORTHWEST FOR 1.1 MILES, TURN LEFT ON PROPOSED ROAD AND GO WEST FOR 2578.3 FEET TO LOCATION.