

District I  
1625 N. French Dr., Hobbs, NM 88240  
District II  
1301 W. Grand Avenue, Artesia, NM 88210  
District III  
1000 Rio Brazos Road, Aztec, NM 87410  
District IV  
1220 S. St. Francis Dr., Santa Fe, NM 87505

State of New Mexico  
Energy Minerals and Natural Resources

Form C-101  
June 16, 2008

Oil Conservation Division  
1220 South St. Francis Dr.  
Santa Fe, NM 87505

Submit to appropriate District Office

☐ AMENDED REPORT

HOBBS OCD

OCT 24 2013

RECEIVED

APPLICATION FOR PERMIT TO DRILL, RE-ENTER, DEEPEN, PLUGBACK, OR ADD A ZONE

<sup>1</sup> Operator Name and Address Texland Petroleum-Hobbs, LLC 777 Main Street, Suite 3200 Fort Worth, Texas 76102		<sup>2</sup> OGRID Number 113315
<sup>3</sup> Property Code 35596	<sup>4</sup> Property Name CP 3 State	<sup>5</sup> API Number 30-025-41474
<sup>9</sup> Proposed Pool 1 Lovington, Abo		<sup>10</sup> Proposed Pool 2

<sup>7</sup> Surface Location

UL or lot no.	Section	Township	Range	Lot Idn	Feet from the	North/South line	Feet from the	East/West line	County
1	3	17S	36E		2380'	South	840'	East	Lea

<sup>8</sup> Proposed Bottom Hole Location If Different From Surface

UL or lot no.	Section	Township	Range	Lot Idn	Feet from the	North/South line	Feet from the	East/West line	County

Additional Well Information

<sup>11</sup> Work Type Code N	<sup>12</sup> Well Type Code O	<sup>13</sup> Cable/Rotary R	<sup>14</sup> Lease Type Code P	<sup>15</sup> Ground Level Elevation 3857.0'
<sup>16</sup> Multiple N	<sup>17</sup> Proposed Depth 8650'	<sup>18</sup> Formation Abo	<sup>19</sup> Contractor Norton	<sup>20</sup> Spud Date ASAP

<sup>021</sup> Proposed Casing and Cement Program

Hole Size	Casing Size	Casing weight/foot	Setting Depth	Sacks of Cement	Estimated TOC
12 1/4"	8 5/8"	24#	2155'	950 sks	surface
7 7/8"	5 1/2"	17#	8605'	1750 sks	surface

<sup>22</sup> Describe the proposed program. If this application is to DEEPEN or PLUG BACK, give the data on the present productive zone and proposed new productive zone. Describe the blowout prevention program, if any. Use additional sheets if necessary.

Texland plans to drill the proposed well to a total depth of 8650' and complete as an Lovington, Abo producing well. During this procedure we plan to use the Closed-Loop System and haul contents to the required disposal. After reaching TD the completion procedures will be determined after evaluation of the well.

Attached is the well plat C-102, location and vicinity maps, the proposed diagram of the rig layout, the blowout preventer diagram, the proposed wellbore schematic, and Closed Loop Design Plan and System Layout diagram.

<sup>23</sup> I hereby certify that the information given above is true and complete to the best of my knowledge and belief.  
Signature:

*Vickie Smith*

Printed name: Vickie Smith

Title: Regulatory Analyst

E-mail Address: vsmith@texpetro.com

Date: 10/10/2013

Phone: 575-397-7450

OIL CONSERVATION DIVISION

Approved by:

Title:

Petroleum Engineer

Approval Date:

10/31/13

Expiration Date:

10/31/15

OCD CONDITION OF APPROVAL for Drilling  
Intent to Drill ONLY — CANNOT produce until the Non-Standard  
Location has been approved by the OCD Santa Fe office.

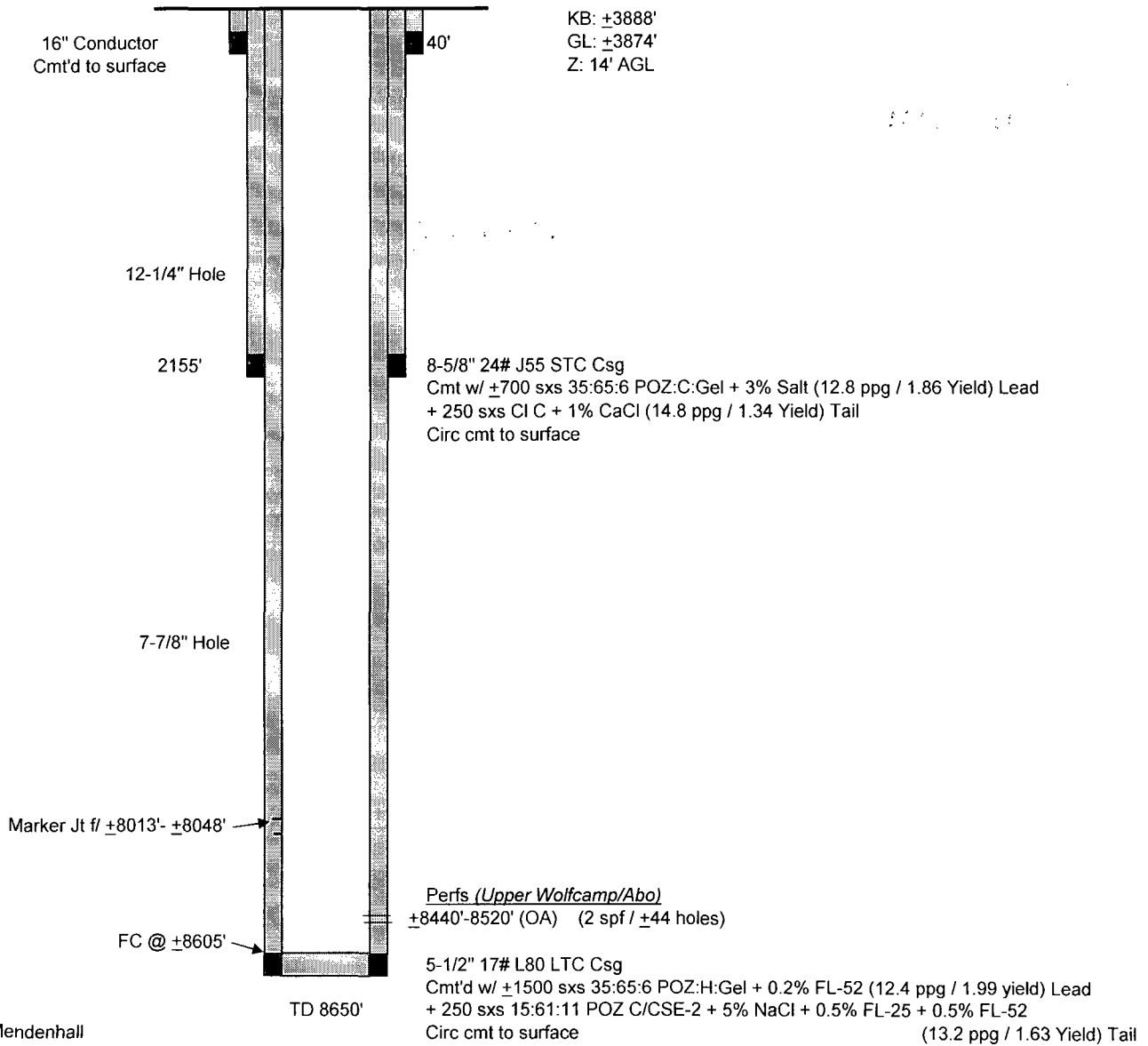
NOV 04 2013

T.M.

## CP 3 State #2

### Wellbore Schematic

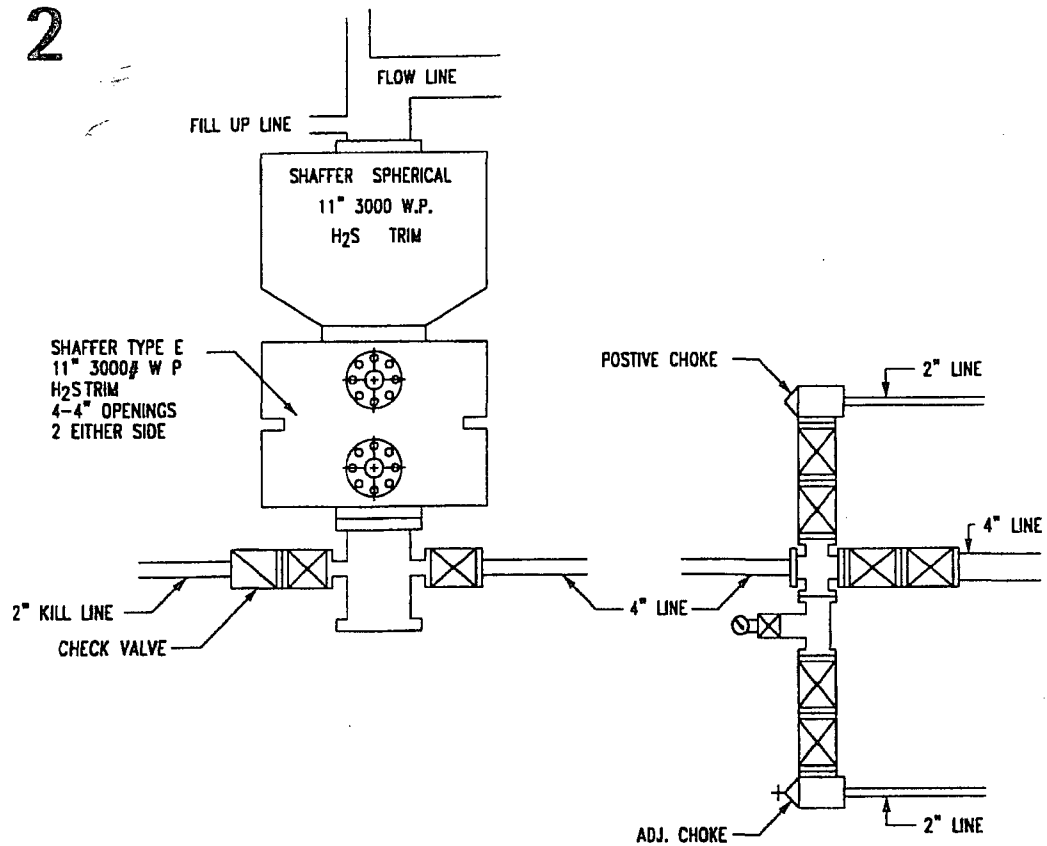
Dr'l'd N/A



G.Mendenhall  
2/27/2013



# RIG 2



# CLOSED-LOOP SYSTEM DESIGN AND CONSTRUCTION

