

3462
RECEIVED

OIL CONSERVATION DIVISION

District Office

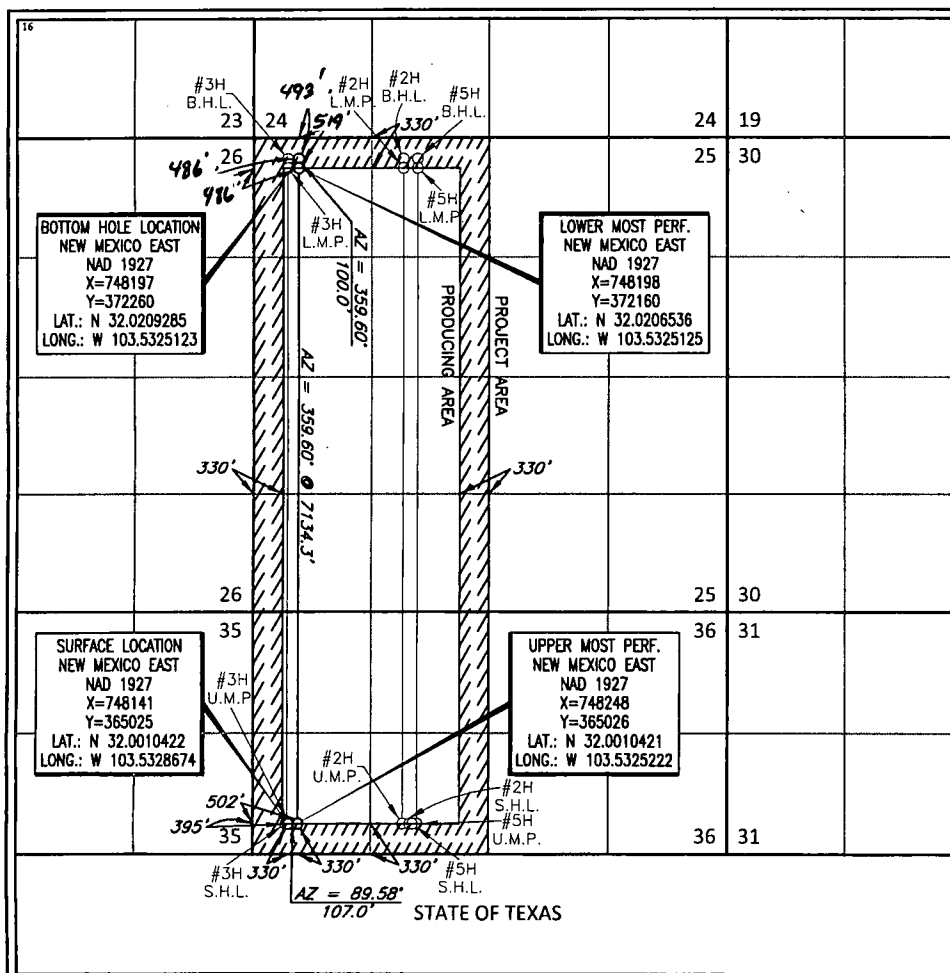
AMENDED REPORT

| | | |
|----------------------------|----------------------------|--------------------------|
| ¹ API Number | ² Pool Code | ³ Pool Name |
| 30-025- | 7280 | Bradley; Bone Spring |
| ⁴ Property Code | ⁵ Property Name | ⁶ Well Number |
| 38129 | ENDURANCE 36 STATE COM | #4H |
| ⁷ OGRID No. | ⁸ Operator Name | ⁹ Elevation |
| 7377 | EOG RESOURCES, INC. | 3336' |

| | | | | | | | | | |
|---------------|---------|----------|-------|---------|---------------|------------------|---------------|----------------|--------|
| UL or lot no. | Section | Township | Range | Lot Idn | Feet from the | North/South line | Feet from the | East/West line | County |
| E | 36 | 26-S | 33-E | - | 330' | SOUTH | 395' | WEST | LEA |

| | | | | | | | | | |
|---|-------------------------------|----------------------------------|----------------------|--|---------------------------------|---|---------------------------------|-------------------------------|----------------------|
| UL or lot no. D | Section 25 | Township 26-S | Range 33-E | Lot Idn - | Feet from the 493 | North/South line NORTH S | Feet from the 486 | East/West line WEST | County LEA |
| ¹² Dedicated Acres 2 473.08 | ¹³ Joint or Infill | ¹⁴ Consolidation Code | | ¹⁵ Order No. 4287 | | 437 | | | |

No allowable will be assigned to this completion until all interests have been consolidated or a non-standard unit has been approved by the division.



I hereby certify that the information contained herein is true and complete to the best of my knowledge and belief, and that this organization either owns a working interest or unleased mineral interest in the land including the proposed bottom hole location or has a right to drill this well at this location pursuant to a contract with an owner of such a mineral or working interest, or to a voluntary pooling agreement or a compulsory pooling order heretofore entered by the division.

Signature Stan Wagner Date 9/7/12
Stan Wagner

I hereby certify that the well location shown on this plat was plotted from field notes of actual surveys made by me or under my supervision, and that the same is true to the best of my belief.

8/18/81 B012 BROWN
Date of Survey
Signature and Seal of Professional Surveyor
NEW MEXICO
18329
PROFESSIONAL SURVEYOR
Certificate Number

NOV 05 2013