

DISTRICT I  
1625 N. FRENCH DR., HOBBS, NM 88240

DISTRICT II  
1301 W. GRAND AVENUE, ARTESIA, NM 88210

DISTRICT III  
1000 Rio Brazos Rd., Aztec, NM 87410

DISTRICT IV  
1220 S. ST. FRANCIS DR., SANTA FE, NM 87505

State of New Mexico  
Energy, Minerals and Natural Resources Department

OIL CONSERVATION DIVISION  
1220 SOUTH ST. FRANCIS DR.  
Santa Fe, New Mexico 87505

Form C-102  
Revised October 12, 2005  
Submit to Appropriate District Office  
State Lease - 4 Copies  
Fee Lease - 3 Copies

HOBBS OCD  
NOV 06 2013

RECEIVED

WELL LOCATION AND ACREAGE DEDICATION PLAT

☐ AMENDED REPORT

API Number <b>30-025-41484</b>	Pool Code <b>50350</b>	Pool Name <b>Penrose Skelly, Drayburg</b>
Property Code <b>2690</b>	Property Name <b>W.T. MCCOMACK</b>	Well Number <b>29</b>
OGRID No. <b>4323</b>	Operator Name <b>CHEVRON USA INC.</b>	Elevation <b>3448'</b>

Surface Location

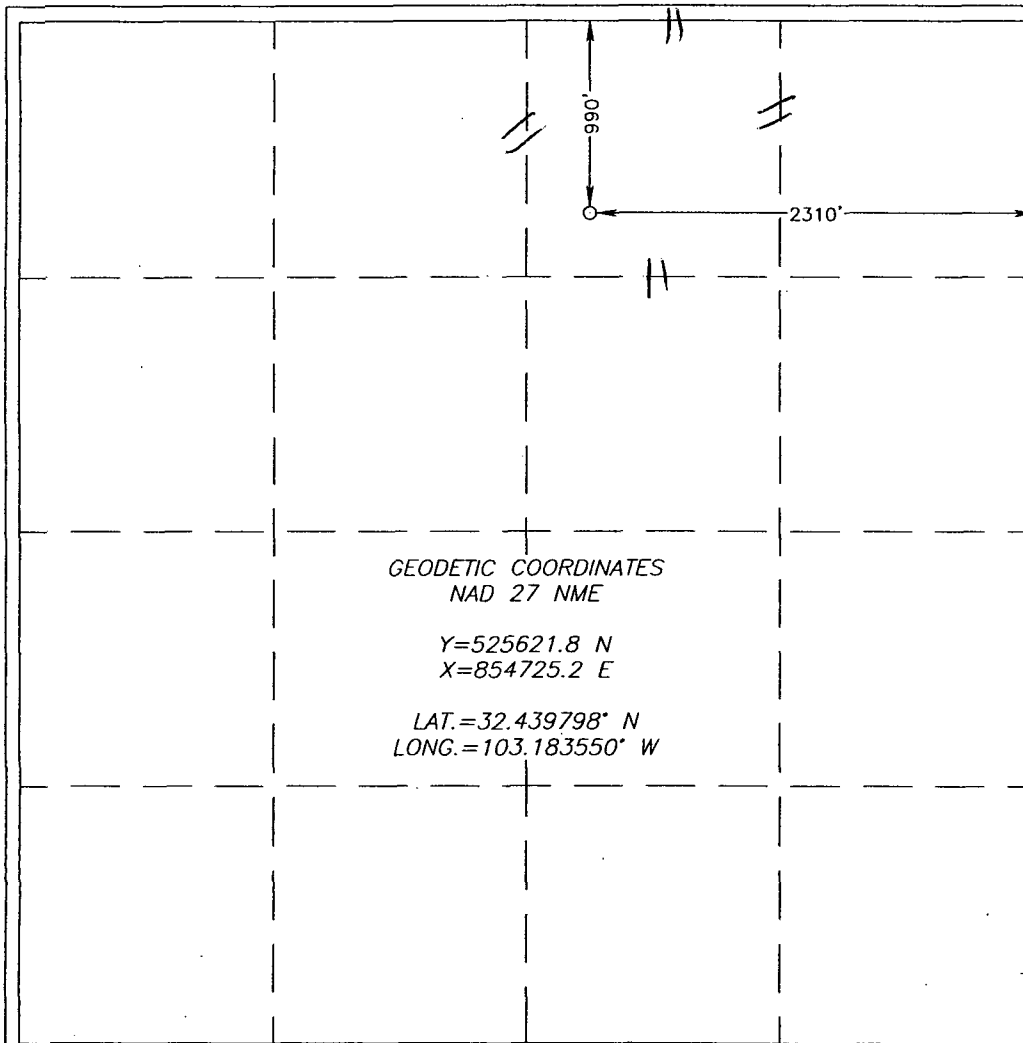
UL or lot No.	Section	Township	Range	Lot Idn	Feet from the	North/South line	Feet from the	East/West line	County
B	32	21-S	37-E		990	NORTH	2310	EAST	LEA

Bottom Hole Location If Different From Surface

UL or lot No.	Section	Township	Range	Lot Idn	Feet from the	North/South line	Feet from the	East/West line	County

Dedicated Acres <b>40</b>	Joint or Infill	Consolidation Code	Order No.
------------------------------	-----------------	--------------------	-----------

NO ALLOWABLE WILL BE ASSIGNED TO THIS COMPLETION UNTIL ALL INTERESTS HAVE BEEN CONSOLIDATED  
OR A NON-STANDARD UNIT HAS BEEN APPROVED BY THE DIVISION



OPERATOR CERTIFICATION

I hereby certify that the information herein is true and complete to the best of my knowledge and belief, and that this organization either owns a working interest or unleased mineral interest in the land including the proposed bottom hole location or has a right to drill this well at this location pursuant to a contract with an owner of such mineral or working interest, or to a voluntary pooling agreement or a compulsory pooling order heretofore entered by the division.

**11-04-2013**  
**1-14-09**  
Signature Date  
**Denise Pinkerton**  
Printed Name

SURVEYOR CERTIFICATION

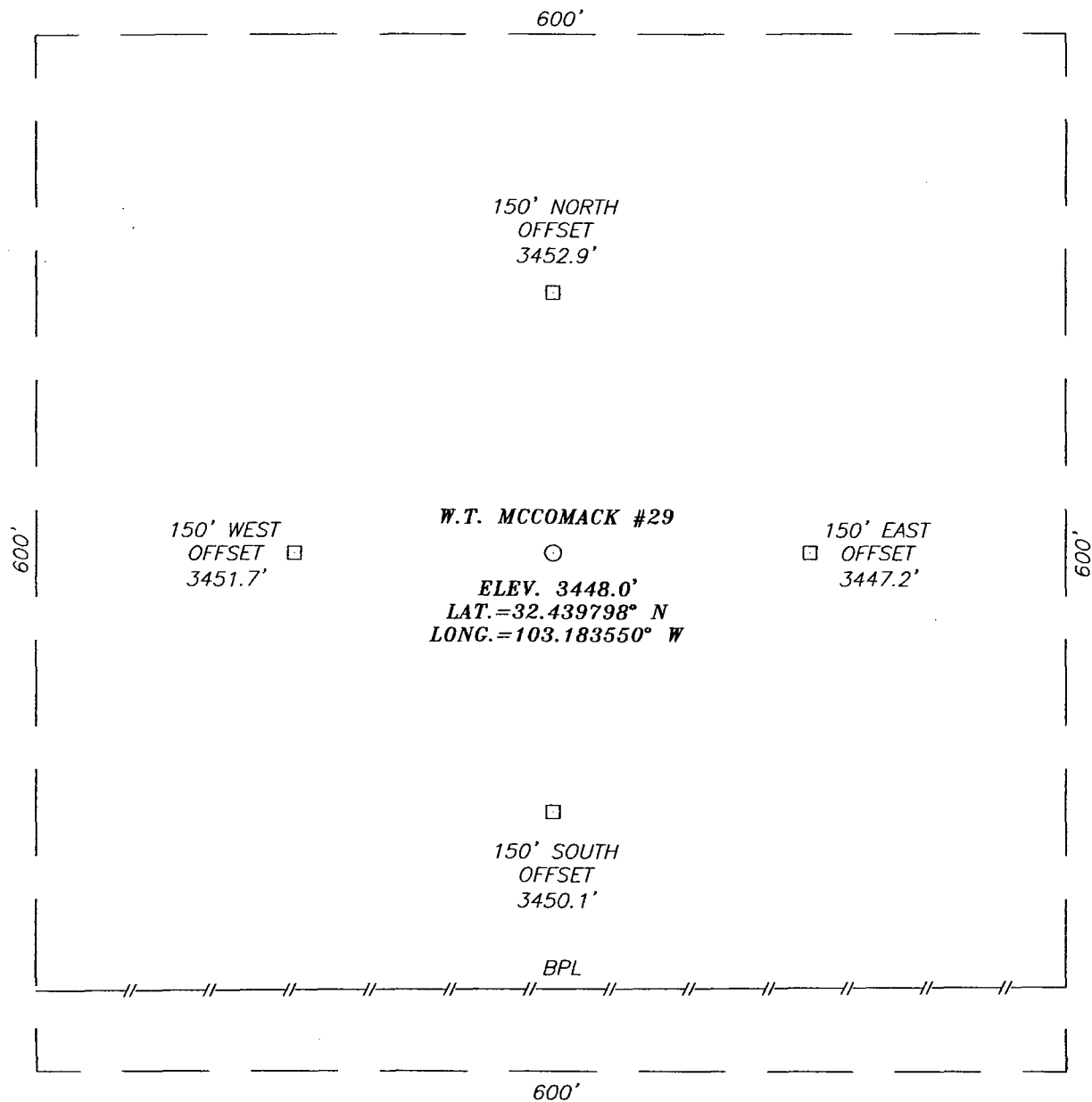
I hereby certify that the well location shown on this plat was plotted from field notes of actual surveys made by me or under my supervision, and that the same is true and correct to the best of my belief.

**RONALD J. EIDSON**  
**DECEMBER 18, 2008**  
Date Surveyed  
Signature & Seal of Professional Surveyor  
**2220**  
**2/23/08**

Certificate No. GARY EIDSON 12641  
RONALD J. EIDSON 3239

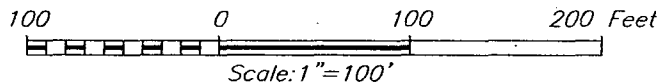
NOV 06 2013

**SECTION 32, TOWNSHIP 21 SOUTH, RANGE 37 EAST, N.M.P.M.,**  
**LEA COUNTY, NEW MEXICO**



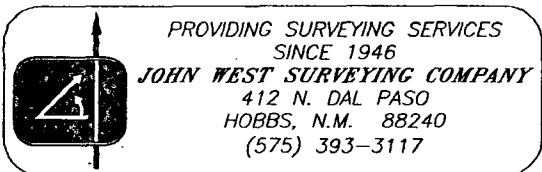
**DIRECTIONS TO LOCATION**

FROM THE INTERSECTION OF TEXAS AVENUE AND  
 LEGION ROAD, GO WEST ON TEXAS AVENUE  
 APPROX. 0.1 MILE. TURN RIGHT AND GO NORTH  
 APPROX. 0.4 MILES. TURN LEFT AND GO WEST  
 APPROX. 0.3 MILES. THIS LOCATION IS APPROX.  
 500 FEET SOUTHWEST OF LEASE ROAD.




**CHEVRON USA INC.**

W.T. MCCOMACK #29 WELL  
 LOCATED 990 FEET FROM THE NORTH LINE  
 AND 2310 FEET FROM THE EAST LINE OF SECTION 32,  
 TOWNSHIP 21 SOUTH, RANGE 37 EAST, N.M.P.M.,  
 LEA COUNTY, NEW MEXICO.



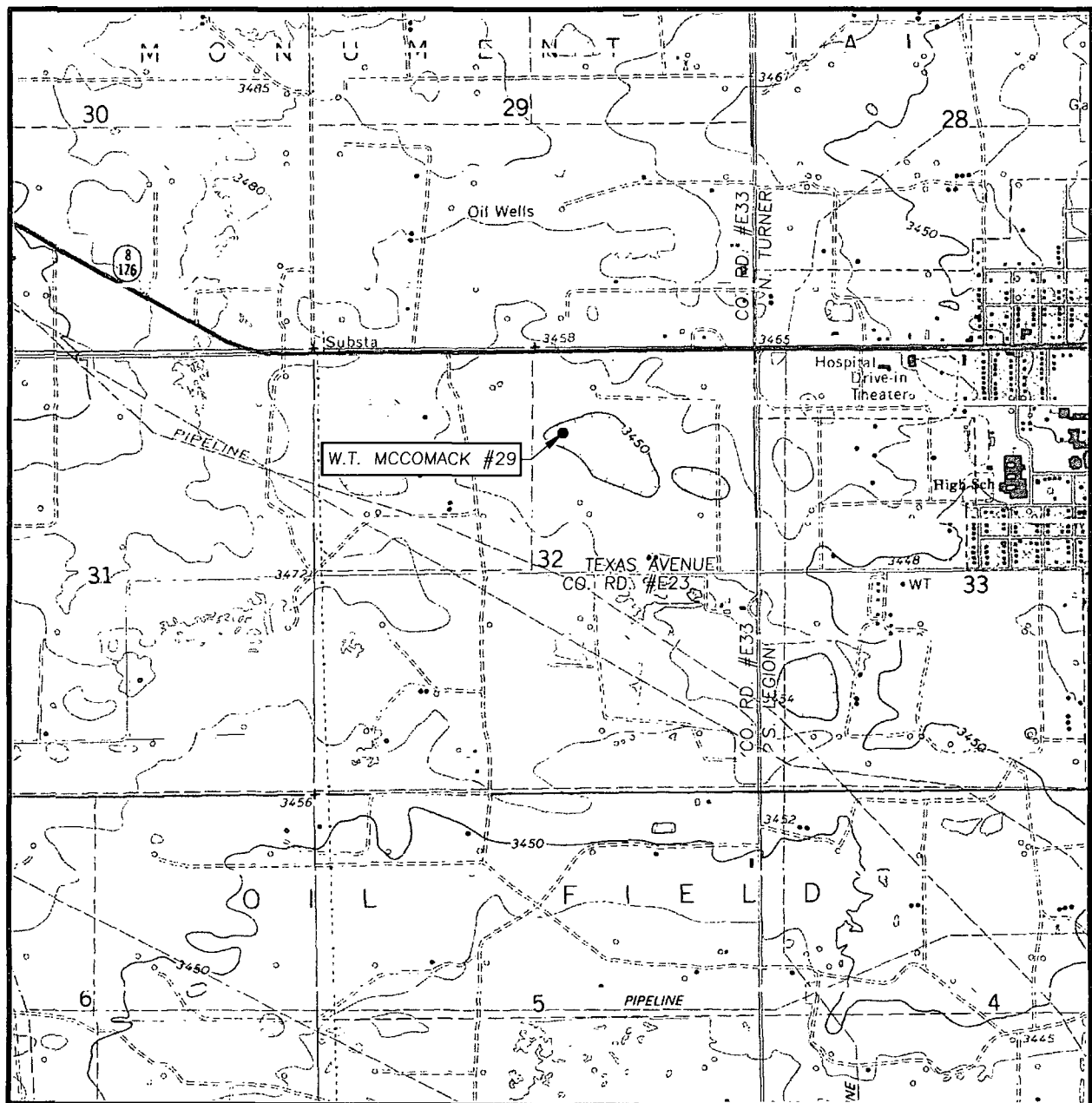
Survey Date: 12/18/08 Sheet 1 of 1 Sheets  
 W.O. Number: 08.11.2037 Dr By: AR Rev 1:N/A  
 Date: 12/22/08 Disk: 08112037 Scale: 1"=100'

**S**OUTH



PROVIDING SURVEYING SERVICES  
SINCE 1946  
**JOHN WEST SURVEYING COMPANY**  
412 N. DAL PASO  
HOBBS, N.M. 88240  
(575) 393-3117

# LOCATION VERIFICATION MAP



SCALE: 1" = 2000'

CONTOUR INTERVAL:  
EUNICE, N.M. - 10'

SEC. 32 TWP. 21-S RGE. 37-E

SURVEY \_\_\_\_\_ N.M.P.M.

COUNTY LEA STATE NEW MEXICO

DESCRIPTION 990' FNL & 2310' FEL

ELEVATION 3448'

OPERATOR CHEVRON USA INC.

LEASE W.T. MCCOMACK

U.S.G.S. TOPOGRAPHIC MAP

EUNICE, N.M.

