

HOBBS OCD

DISTRICT I

1625 N. FRENCH DR., HOBBS, NM 88240

DISTRICT II

1301 W. GRAND AVENUE, ARTESIA, NM 88210

DISTRICT III

1000 Rio Brazos Rd., Aztec, NM 87410

DISTRICT IV

1220 S. ST. FRANCIS DR., SANTA FE, NM 87505

State of New Mexico

Energy, Minerals and Natural Resources Department

OIL CONSERVATION DIVISION

1220 SOUTH ST. FRANCIS DR.

Santa Fe, New Mexico 87505

Form C-102

Revised October 12, 2005

Submit to Appropriate District Office

State Lease - 4 Copies

Fee Lease - 3 Copies

WELL LOCATION AND ACREAGE DEDICATION PLAT

☐ AMENDED REPORT

API Number 30-025-41486	Pool Code 5035D	Pool Name Penrose Skelly Grayburg
Property Code 2634	Property Name C.L. HARDY	Well Number 10
OGRID No. 4323	Operator Name CHEVRON USA INC.	Elevation 3495'

Surface Location

UL or lot No.	Section	Township	Range	Lot Idn	Feet from the	North/South line	Feet from the	East/West line	County
M	20	21-S	37-E		1310	SOUTH	330	WEST	LEA

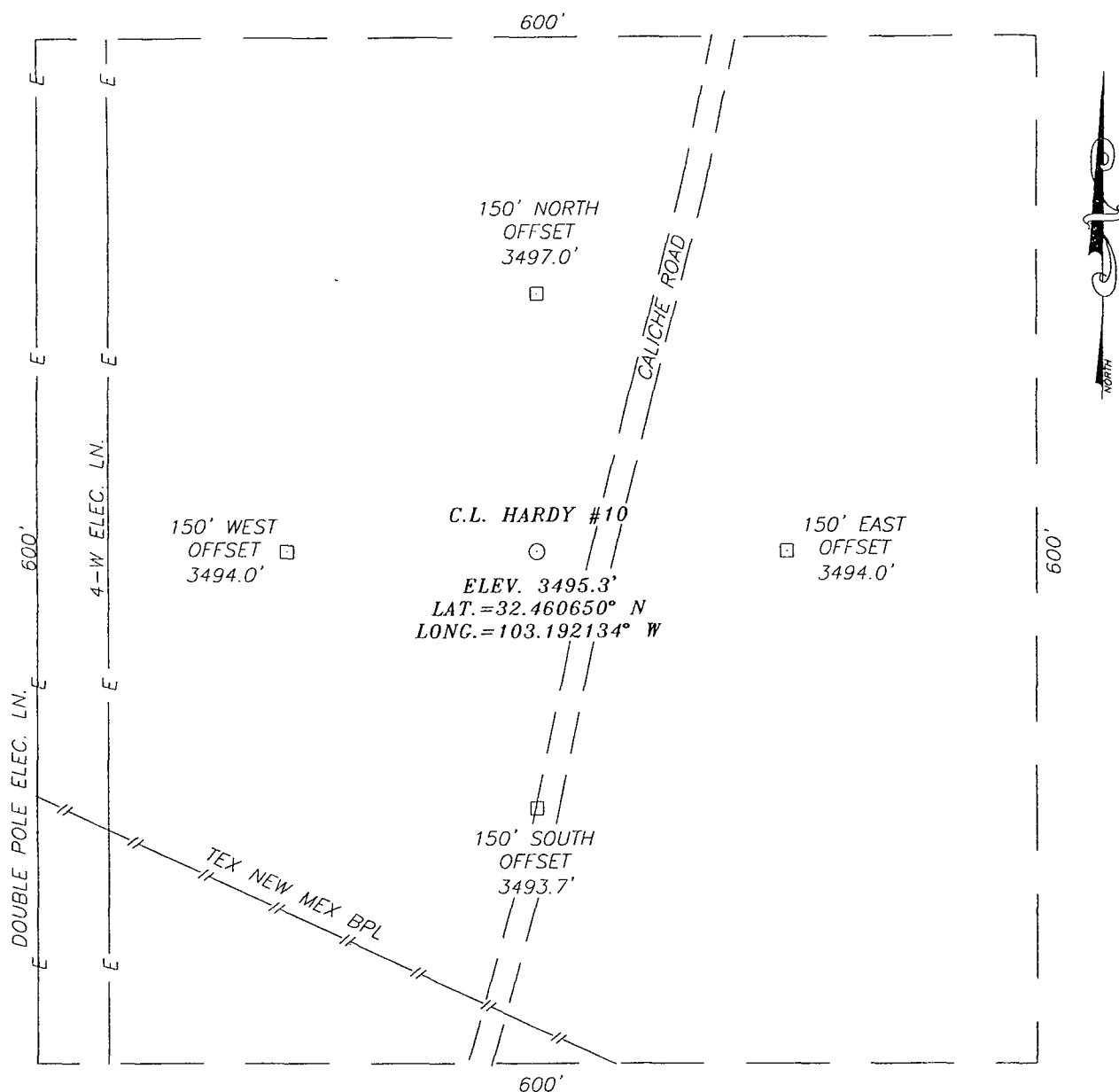
Bottom Hole Location If Different From Surface

UL or lot No.	Section	Township	Range	Lot Idn	Feet from the	North/South line	Feet from the	East/West line	County
Dedicated Acres 40	Joint or Infill	Consolidation Code	Order No.						

NO ALLOWABLE WILL BE ASSIGNED TO THIS COMPLETION UNTIL ALL INTERESTS HAVE BEEN CONSOLIDATED
OR A NON-STANDARD UNIT HAS BEEN APPROVED BY THE DIVISION

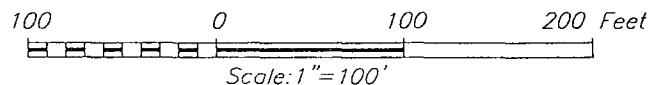
<p>GEODETIC COORDINATES NAD 27 NME</p> <p>Y=533179.4 N X=851995.7 E</p> <p>LAT.=32.460650° N LONG.=103.192134° W</p>	<p>OPERATOR CERTIFICATION</p> <p>I hereby certify that the information herein is true and complete to the best of my knowledge and belief, and that this organization either owns a working interest or unleased mineral interest in the land including the proposed bottom hole location or has a right to drill this well at this location pursuant to a contract with an owner of such mineral or working interest, or to a voluntary pooling agreement or a compulsory pooling order heretofore entered by the division.</p> <p>11-04-2013</p> <p><i>[Signature]</i> Signature Date</p> <p>DAVIDE PINKERTON Printed Name</p>
	<p>SURVEYOR CERTIFICATION</p> <p>I hereby certify that the well location shown on this plat was plotted from field notes of actual surveys made by me or under my supervision, and that the same is true and correct to the best of my belief.</p> <p>JULY 18, 2008</p> <p>Date Surveyed LA</p> <p>Signature & Seal of Professional Surveyor</p> <p><i>[Signature]</i> Certificate No. RONALD EIDSON 3239</p>
	<p>NOV 06 2013</p>

SECTION 20, TOWNSHIP 21 SOUTH, RANGE 37 EAST, N.M.P.M.,
LEA COUNTY, NEW MEXICO



DIRECTIONS TO LOCATION

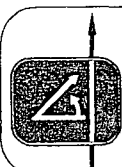
FROM INTERSECTION ST. HWY. #8 AND CO. RD. #E33 (TURNER), GO NORTH ON CO. RD. #E33 APPROX. 1.15 MILES. TURN LEFT AND GO WEST APPROX. 1.0 MILES. VEER RIGHT AND GO NORTH APPROX. 0.1 MILE. THIS LOCATION IS APPROX. 50 FEET LEFT.



CHEVRON USA INC.

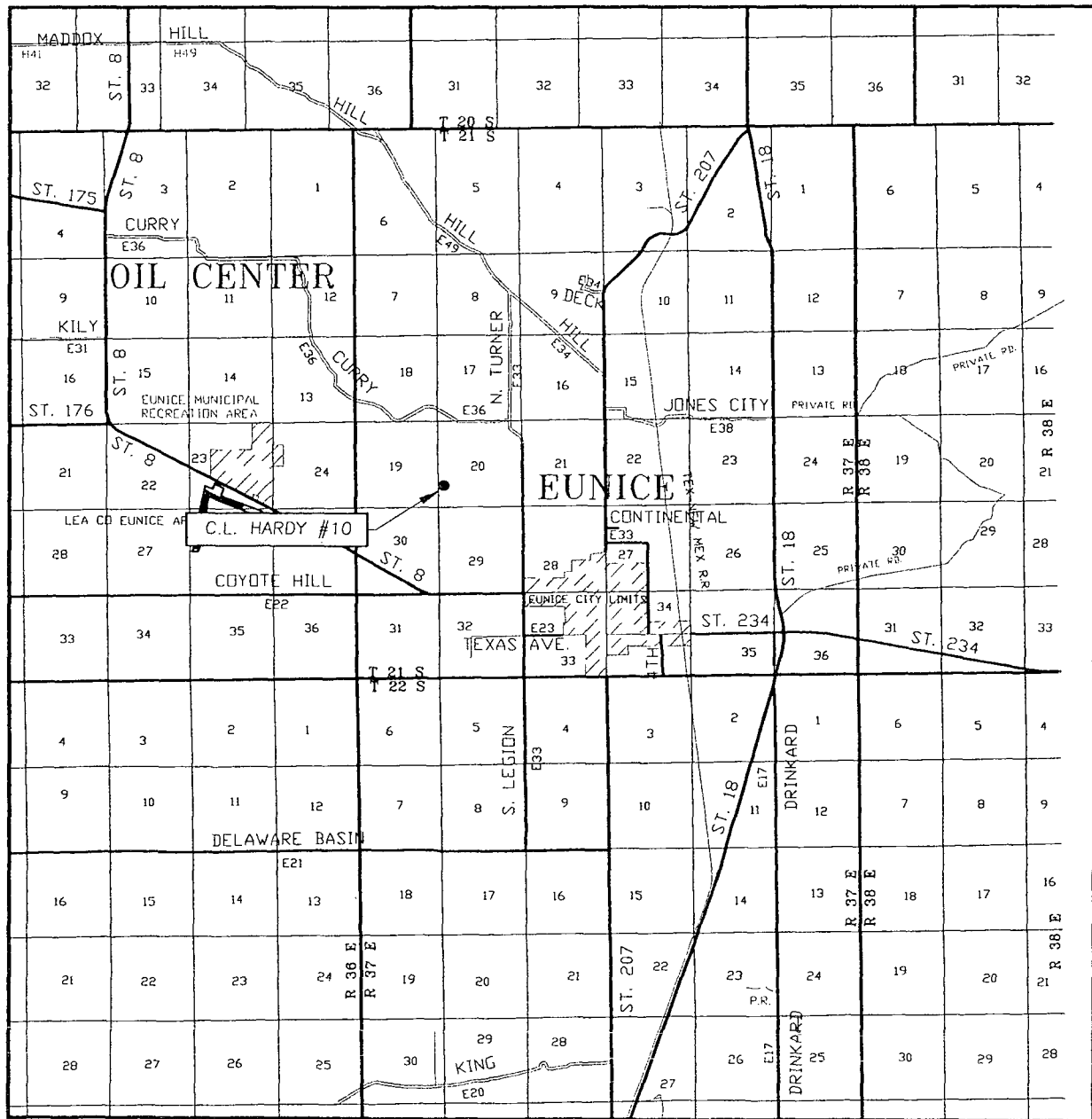
C.L. HARDY #10 WELL
LOCATED 1310 FEET FROM THE SOUTH LINE
AND 330 FEET FROM THE WEST LINE OF SECTION 20,
TOWNSHIP 21 SOUTH, RANGE 37 EAST, N.M.P.M.,
LEA COUNTY, NEW MEXICO.

Survey Date: 7/18/08	Sheet 1 of 1 Sheets
W.O. Number: 08.11.1151	Dr By: LA
Date: 7/29/08	08111151
	Scale: 1"=100'



PROVIDING SURVEYING SERVICES
SINCE 1946
JOHN WEST SURVEYING COMPANY
412 N. DAL PASO
HOBBS, N.M. 88240
(505) 393-3117

VICINITY MAP



SCALE: 1" = 2 MILES

SEC. 20 TWP. 21-S. RGE. 37-E

SURVEY N.M.P.M.

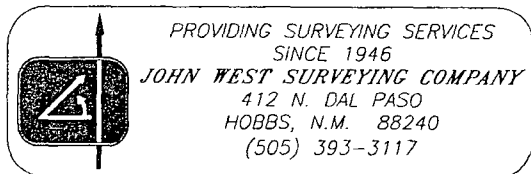
COUNTY LEA STATE NEW MEXICO

DESCRIPTION 1310' FSL & 330' FWL

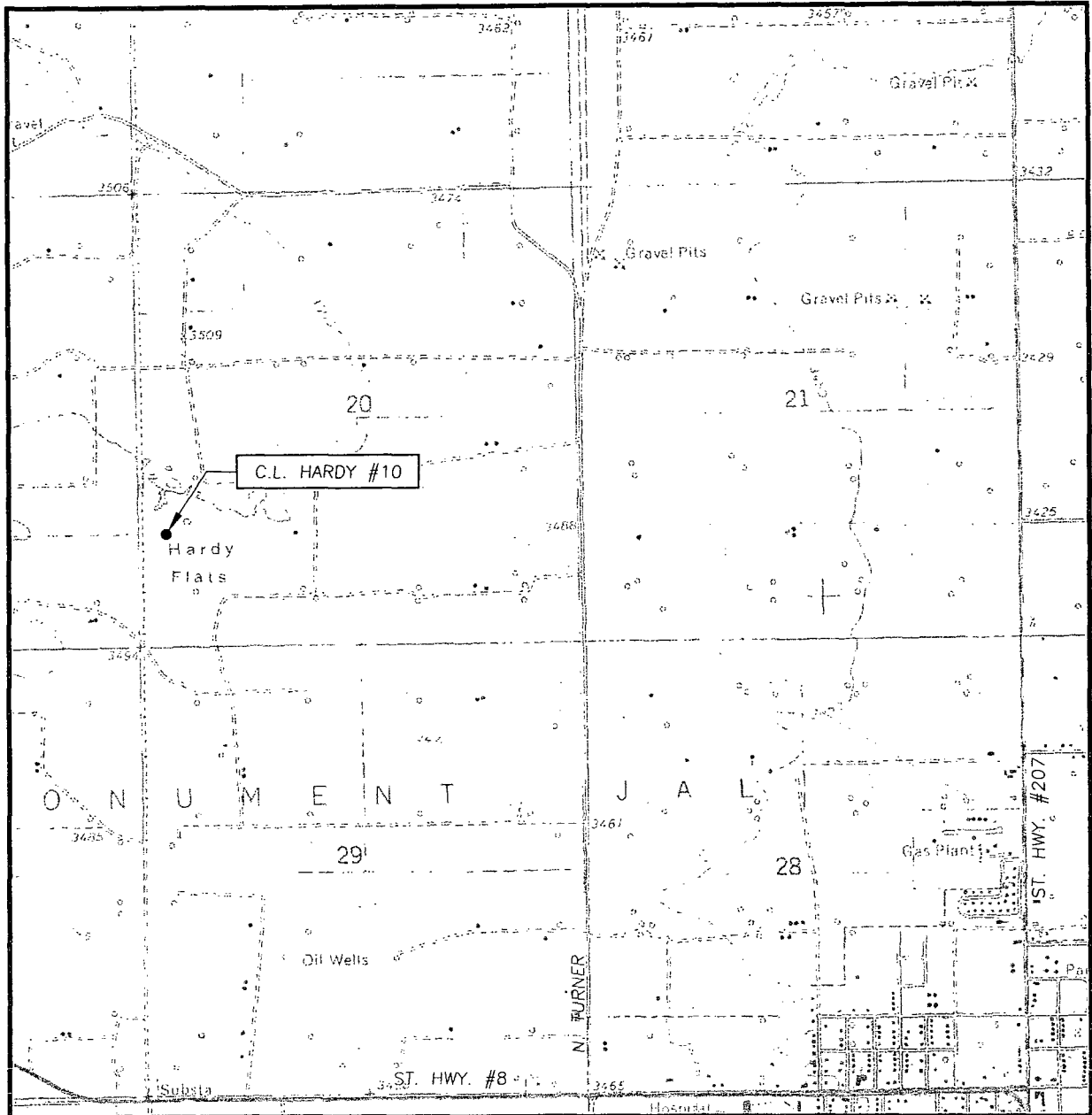
ELEVATION 3495'

OPERATOR CHEVRON U.S.A. INC.

LEASE C.L. HARDY



LOCATION VERIFICATION MAP



SCALE: 1" = 2000'

CONTOUR INTERVAL:
EUNICE, N.M. - 10'

SEC. 20 TWP. 21-S RGE. 37-E

SURVEY _____ N.M.P.M. _____

COUNTY LEA STATE NEW MEXICO

DESCRIPTION 1310' FSL & 330' FWL

ELEVATION 3495'

OPERATOR CHEVRON USA INC.

LEASE C.L. HARDY

U.S.G.S. TOPOGRAPHIC MAP
EUNICE, N.M.



PROVIDING SURVEYING SERVICES
SINCE 1946
JOHN WEST SURVEYING COMPANY
412 N. DAL PASO
HOBBS, N.M. 88240
(505) 393-3117