

District I
1625 N. French Dr., Hobbs, NM 88340
Phone: (575) 393-6161 Fax: (575) 393-0720
District II
311 S. First St., Artesia, NM 88210
Phone: (575) 748-1283 Fax: (575) 748-9720
District III
1000 Rio Brazos Road, Aztec, NM 87410
Phone: (505) 334-6178 Fax: (505) 334-6170
District IV
1220 S. St. Francis Dr., Santa Fe, NM 87505
Phone: (505) 476-3460 Fax: (505) 476-3462

State of New Mexico
Energy, Minerals & Natural Resources Department
OIL CONSERVATION DIVISION
1220 South St. Francis Dr.
Santa Fe, NM 87505

Form C-102
Revised August 1, 2011
Submit one copy to appropriate
District Office

☐ AMENDED REPORT

NOV 05 2013

RECEIVED

WELL LOCATION AND ACREAGE DEDICATION PLAT

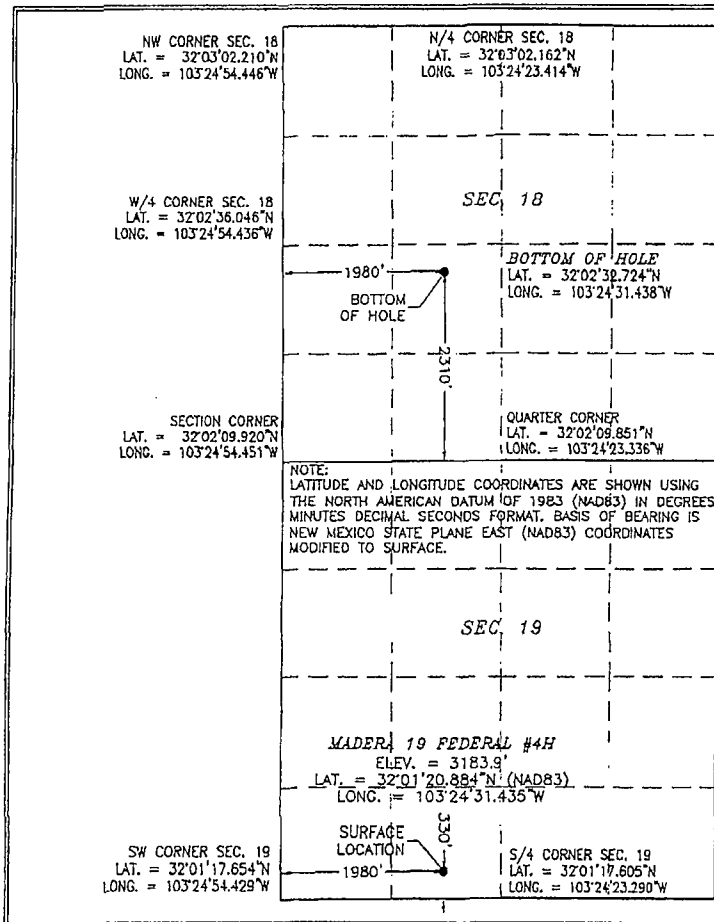
¹ API Number 30-025-41492	² Pool Code 97597	³ Pool Name TAAALINA; DELAWARE, SW
⁴ Property Code 40212	⁵ Property Name MADERA "19" FEDERAL	
⁷ OGRID No. 281085	⁸ Operator Name RMR OPERATING, LLC	⁶ Well Number 4H
		⁹ Elevation 3183.9

¹⁰ Surface Location									
UL or lot no.	Section	Township	Range	Lot Idn	Feet from the	North/South line	Feet from the	East/West line	County
N	19	26 S	35 E		330	SOUTH	1980	WEST	LEA

¹¹ Bottom Hole Location If Different From Surface									
UL or lot no.	Section	Township	Range	Lot Idn	Feet from the	North/South line	Feet from the	East/West line	County
K	18	26 S	35 E		2310	SOUTH	1980	WEST	LEA

¹² Dedicated Acres	¹³ Joint or Infill	¹⁴ Consolidation Code	¹⁵ Order No.

No allowable will be assigned to this completion until all interests have been consolidated or a non-standard unit has been approved by the division.



¹⁷ OPERATOR CERTIFICATION

I hereby certify that the information contained herein is true and complete to the best of my knowledge and belief, and that this organization either owns a working interest or unleased mineral interest in the land including the proposed bottom hole location or has a right to drill this well at this location pursuant to a contract with an owner of such a mineral or working interest, or to a voluntary pooling agreement or a compulsory pooling order heretofore entered by the division.

[Signature] 11/25/13
Signature Date

Tommy W. Folsom
Printed Name

Tommy@AcadMountainResources.com
E-mail Address

¹⁸ SURVEYOR CERTIFICATION

I hereby certify that the well location shown on this plat was plotted from field notes of actual surveys made by me or under my supervision, and that the same is true and correct to the best of my belief.

March 2011
Date of Survey

[Signature]
Signature and Seal of Professional Surveyor

Certificate Number: 12797
SURVEY NO. 1646

NOV 07 2013

pm