

DISTRICT I
1625 N. French Dr., Hobbs, NM 88240
Phone: (575) 393-6161 Fax: (575) 393-0720
DISTRICT II
811 S. First St., Artesia, NM 88210
Phone: (575) 748-1283 Fax: (575) 748-9720
DISTRICT III
1000 Rio Bruzoz Road, Aztec, NM 87410
Phone: (505) 334-6178 Fax: (505) 334-6170
DISTRICT IV
1220 S. St. Francis Dr., Santa Fe, NM 87505
Phone: (505) 476-3460 Fax: (505) 476-3462

State of New Mexico
Energy, Minerals & Natural Resources Department
OIL CONSERVATION DIVISION
1220 South St. Francis Dr.
Santa Fe, New Mexico 87505

Form C-102
Revised August 1, 2011
Submit one copy to appropriate
District Office

HOBBS OCE
SEP 04 2013

RECEIVED
AUG 14 2013
NM OGD APPL AT

AMENDED REPORT

WELL LOCATION AND ACREAGE DEDICATION PLAT

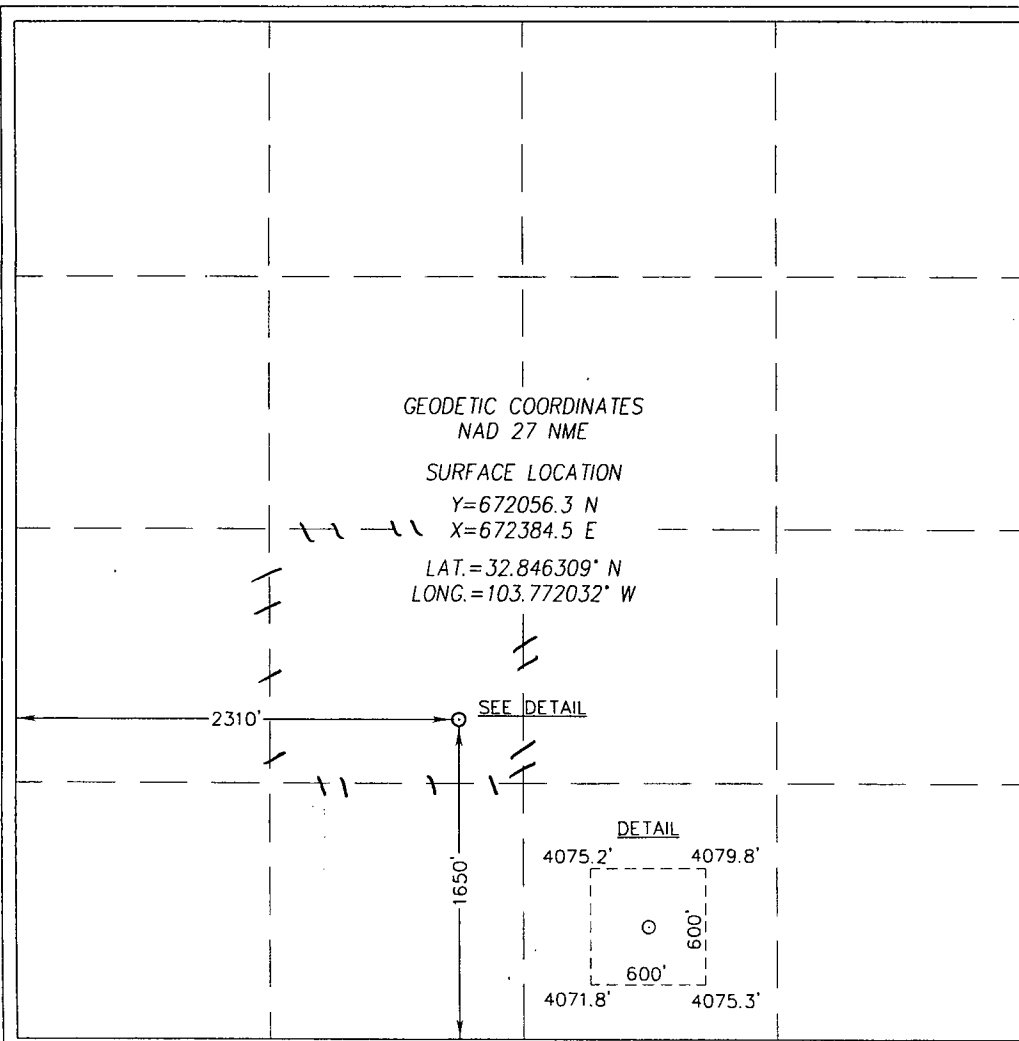
API Number 30-025-40980	Pool Code 44500	Pool Name MALJAMAR; YESO, WEST
Property Code 39558	Property Name BRANEX-COG FEDERAL	Well Number 13
OGRID No. 229137	Operator Name COG OPERATING, LLC	Elevation 4076'

Surface Location									
UL or lot No.	Section	Township	Range	Lot Idn	Feet from the	North/South line	Feet from the	East/West line	County
K	9	17-S	32-E		1650	SOUTH	2310	WEST	LEA

Bottom Hole Location If Different From Surface

UL or lot No.	Section	Township	Range	Lot Idn	Feet from the	North/South line	Feet from the	East/West line	County
Dedicated Acres 40	Joint or Infill	Consolidation Code	Order No.						

NO ALLOWABLE WILL BE ASSIGNED TO THIS COMPLETION UNTIL ALL INTERESTS HAVE BEEN CONSOLIDATED OR A NON-STANDARD UNIT HAS BEEN APPROVED BY THE DIVISION



<p>OPERATOR CERTIFICATION</p> <p>I hereby certify that the information herein is true and complete to the best of my knowledge and belief, and that this organization either owns a working interest or unleased mineral interest in the land including the proposed bottom hole location or has a right to drill this well at this location pursuant to a contract with an owner of such mineral or working interest, or to a voluntary pooling agreement or a compulsory pooling order heretofore entered by the division.</p> <p><i>Robyn M. Odom</i> 8/12/2013 Signature Date</p> <p>Robyn M. Odom Printed Name</p> <p>Rodom@concho.com E-mail Address</p>
<p>SURVEYOR CERTIFICATION</p> <p>I hereby certify that the well location shown on this plat was plotted from field notes of actual surveys made by me or under my supervision, and that the same is true and correct to the best of my belief.</p> <p>JUNE 15, 2012</p> <p>Date of Survey</p> <p>Signature & Seal of Professional Surveyor:</p> <p>RONALD J. EIDSON NEW MEXICO 3239 11/23/2012</p> <p>Certificate Number: Gary G. Eidson 12641 Ronald J. Eidson 3239</p> <p>AF REL W.O. #121357485 JWSC W.O.: 12.13.1983</p>

DISTRICT I
1625 N. French Dr., Hobbs, NM 88240
Phone: (575) 393-6161 Fax: (575) 393-0720

DISTRICT II
811 S. First St., Artesia, NM 88210
Phone: (575) 748-1283 Fax: (575) 748-9720

DISTRICT III
1000 Rio Brazos Road, Aztec, NM 87410
Phone: (505) 334-6178 Fax: (505) 334-6170

DISTRICT IV
1220 S. St. Francis Dr., Santa Fe, NM 87505
Phone: (505) 476-3460 Fax: (505) 476-3462

HOBBS OCD
AUG 20 2013
RECEIVED

State of New Mexico
Energy, Minerals & Natural Resources Department
OIL CONSERVATION DIVISION
1220 South St. Francis Dr.
Santa Fe, New Mexico 87505

Form C-102
Revised August 1, 2011
Submit one copy to appropriate
District Office

☐ AMENDED REPORT

WELL LOCATION AND ACREAGE DEDICATION PLAT

API Number 30-025-40980	Pool Code 44500	Pool Name MALJAMAR; YESO, WEST
Property Code 39558	Property Name BRANEX-COG FEDERAL	Well Number 13
OGRID No. 229137	Operator Name COG OPERATING, LLC	Elevation 4076'

Surface Location

UL or lot No. K	Section 9	Township 17-S	Range 32-E	Lot Idn	Feet from the 1650	North/South line SOUTH	Feet from the 2310	East/West line WEST	County LEA
--------------------	--------------	------------------	---------------	---------	-----------------------	---------------------------	-----------------------	------------------------	---------------

Bottom Hole Location If Different From Surface

UL or lot No.	Section	Township	Range	Lot Idn	Feet from the	North/South line	Feet from the	East/West line	County
Dedicated Acres 40	Joint or Infill	Consolidation Code	Order No.						

NO ALLOWABLE WILL BE ASSIGNED TO THIS COMPLETION UNTIL ALL INTERESTS HAVE BEEN CONSOLIDATED OR A NON-STANDARD UNIT HAS BEEN APPROVED BY THE DIVISION

<p>GEODETIC COORDINATES NAD 27 NME SURFACE LOCATION Y=672056.3 N X=672384.5 E LAT.=32.846309° N LONG.=103.772032° W</p> <p>SEE DETAIL</p> <p>DETAIL 4075.2' 4079.8' 600' 600' 4071.8' 4075.3'</p>	<p>OPERATOR CERTIFICATION I hereby certify that the information herein is true and complete to the best of my knowledge and belief, and that this organization either owns a working interest or unleased mineral interest in the land including the proposed bottom hole location or has a right to drill this well at this location pursuant to a contract with an owner of such mineral or working interest, or to a voluntary pooling agreement or a compulsory pooling order heretofore entered by the division.</p> <p><i>Robyn M. Odom</i> 8/12/2013 Signature Date Robyn M. Odom Printed Name Rodom@concho.com E-mail Address</p>
	<p>SURVEYOR CERTIFICATION I hereby certify that the well location shown on this plat was plotted from field notes of actual surveys made by me or under my supervision, and that the same is true and correct to the best of my belief.</p> <p>JUNE 15, 2012</p> <p>Date of Survey Signature & Seal of Professional Surveyor: <i>Ronald J. Eidson</i> 11/23/2012 Certificate Number Gary G. Eidson 12641 Ronald J. Eidson 3239</p>
	<p>AF REL W.O. #12131485 JWSC W.O. 12.13.1983</p>
	<p>NOV 12 2013</p>