

## Hydrogen Sulfide Plan Summary

RECEIVED

- A. All personnel shall receive proper H<sub>2</sub>S training in accordance with Onshore Order III.C.3.a.
- B. Briefing Area: two perpendicular areas will be designated by signs and readily accessible.
- C. Required Emergency Equipment:

- Well control equipment
  - a. Flare line 150' from wellhead to be ignited by flare gun.
  - b. Choke manifold with a remotely operated choke.
  - c. Mud/gas separator
- Protective equipment for essential personnel.

### Breathing apparatus:

- a. Rescue Packs (SCBA) — 1 unit shall be placed at each breathing area, 2 shall be stored in the safety trailer.
- b. Work/Escapes packs — 4 packs shall be stored on the rig floor with sufficient air hose not to restrict work activity.
- c. Emergency Escape Packs — 4 packs shall be stored in the doghouse for emergency evacuation.

### Auxiliary Rescue Equipment:

- a. Stretcher
- b. Two OSHA full body harness
- c. 100 ft 5/8 inch OSHA approved rope
- d. 1-20# class ABC fire extinguisher

- H<sub>2</sub>S detection and monitoring equipment:

The stationary detector with three sensors will be placed in the upper dog house if equipped, set to visually alarm @ 10 ppm and audible @ 14 ppm. Calibrate a minimum of every 30 days or as needed. The sensors will be placed in the following places: Rig floor / Bell nipple / End of flow line or where well bore fluid is being discharged.

(Gas sample tubes will be stored in the safety trailer)

- Visual warning systems.
  - a. One color code condition sign will be placed at the entrance to the site reflecting the possible conditions at the site.
  - b. A colored condition flag will be on display, reflecting the current condition at the site at the time.
  - c. Two wind socks will be placed in strategic locations, visible from all angles.

**EOG RESOURCES, INC.**  
**HAWK 25 FED #1H**

- **Mud program:**  
The mud program has been designed to minimize the volume of H<sub>2</sub>S circulated to surface. The operator will have the necessary mud products to minimize hazards while drilling in H<sub>2</sub>S bearing zones.
- **Metallurgy:**  
All drill strings, casings, tubing, wellhead, blowout preventer, drilling spool, kill lines, choke manifold and lines, and valves shall be suitable for H<sub>2</sub>S service.
- **Communication:**  
Communication will be via cell phones and land lines where available.

**EOG RESOURCES, INC.**  
**HAWK 25 FED #1H**

**Emergency Assistance Telephone List**

**PUBLIC SAFETY:** **911 or**

Lea County Sheriff's Department	(575) 396-3611
Rod Coffman	
Fire Department:	
Carlsbad	(575) 885-3125
Artesia	(575) 746-5050
Hospitals:	
Carlsbad	(575) 887-4121
Artesia	(575) 748-3333
Hobbs	(575) 392-1979
Dept. of Public Safety/Carlsbad	(575) 748-9718
Highway Department	(575) 885-3281
New Mexico Oil Conservation	(575) 476-3440
U.S. Dept. of Labor	(575) 887-1174

**EOG Resources, Inc.**

EOG / Midland	Office (432) 686-3600
---------------	-----------------------

**Company Drilling Consultants:**

Danny Kiser    Will Henderson	Cell (432) 894-3417
Larry King	

**Drilling Engineer**

Steve Munsell	Office (432) 686-3609
	Cell (432) 894-1256

**Operations Manager**

Travis Lain	Office (432) 686-3740
	Cell (432) 254-3521

**Drilling Superintendents**

Ron Welch	Office (432) 686-3695
	Cell (432) 386-0592
Barney Thompson	Office (432) 686-3678
	Cell (432) 254-9056

**Cactus Drilling**

Cactus Drilling	Office (580) 799-2752
Cactus 123 Drilling Rig	Rig (432) 894-3417

**Tool Pusher:**

Jack Herndon	Cell (405) 519-6552
Larry Slife	Cell (405) 250-6368

**Safety**

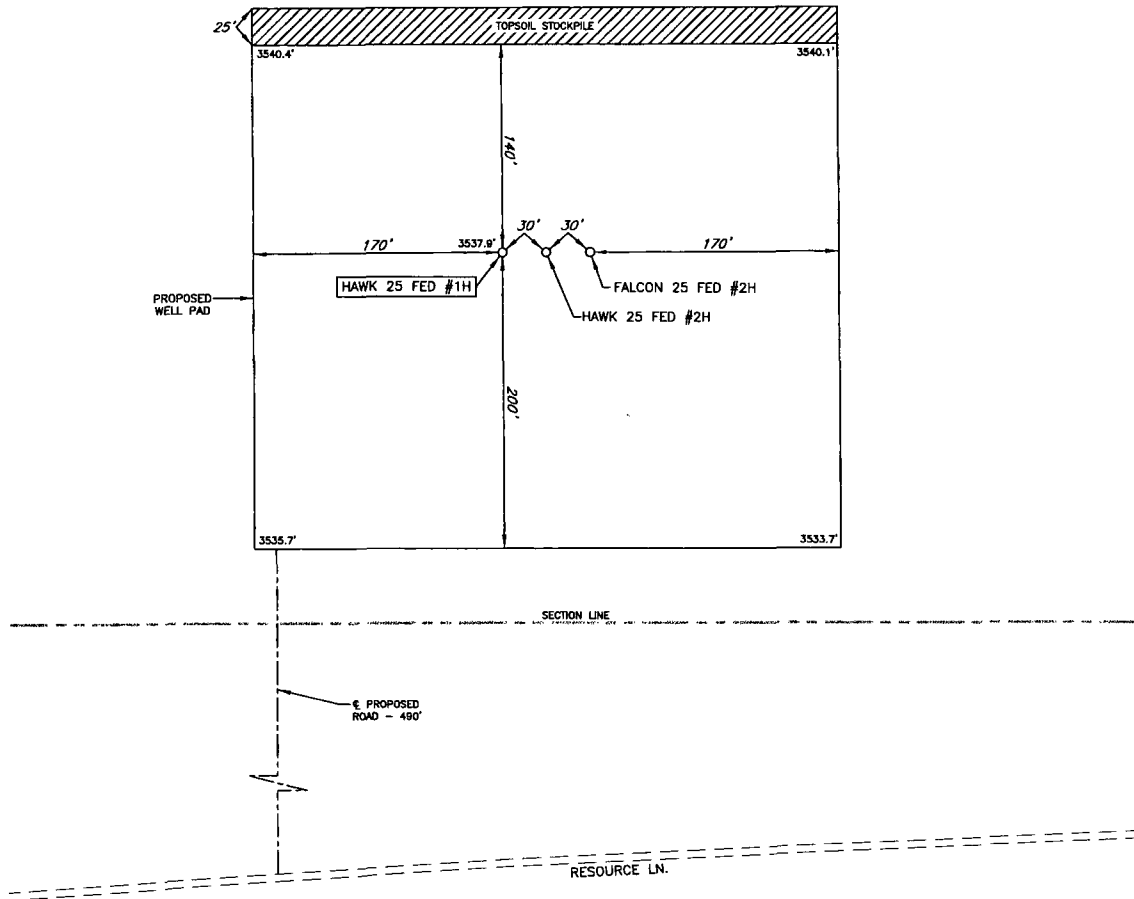
James Fischer (HSE Manager)	Office (432) 686-3747
	Cell (817) 253-3725
Brian Chandler	Cell (806) 777-8814
Terry Maxwell (Consultant)	Cell (432) 349-6926

DESCRIPTION	Proposed Surface Use Plan		SCALE	1" = 35' ft
	DRAWN BY PMH	REVISED 2/13/2013		



SECTION 25, TOWNSHIP 24 SOUTH, RANGE 33 EAST, N.M.P.M.  
LEA COUNTY, NEW MEXICO

DETAIL VIEW  
SCALE: 1" = 100'



LEASE NAME & WELL NO.: HAWK 25 FED #1H  
#1H LATITUDE N 32.1818898 #1H LONGITUDE W 103.5309070

#### LEGEND

== == == ROAD WAY  
- - - - - SECTION LINE  
- - - - - PROPOSED ROAD



SCALE: 1" = 100'  
0' 50' 100'

## TOPOGRAPHIC

SURVEYING • MAPPING • GIS • GPS

2803 NORTH BIG SPRING • MIDLAND, TEXAS 79705  
TELEPHONE: (432) 682-1653 • FAX (432) 682-1743  
1400 EVERMAN PARKWAY, Ste. 197 • FT. WORTH, TEXAS 76140  
TELEPHONE: (817) 744-7512 • FAX (817) 744-7548  
2225 PERRYTON PARKWAY • PAMPA, TEXAS 79065  
TELEPHONE: (806) 665-7218 • FAX (806) 665-7210  
WWW.TOPOGRAPHIC.COM

ALL BEARINGS, DISTANCES, AND COORDINATE VALUES CONTAINED HEREON ARE GRID BASED UPON THE NEW MEXICO STATE PLANE COORDINATE SYSTEM, EAST ZONE OF THE NORTH AMERICAN DATUM 1927, U.S. SURVEY FEET

THIS EASEMENT/SERVITUDE LOCATION SHOWN HEREON HAS BEEN SURVEYED ON THE GROUND UNDER MY SUPERVISION AND PREPARED ACCORDING TO THE EVIDENCE FOUND AT THE TIME OF SURVEY, AND DATA PROVIDED BY EOG RESOURCES, INC. THIS CERTIFICATION IS MADE AND LIMITED TO THOSE PERSONS OR ENTITIES SHOWN ON THE FACE OF THIS PLAT AND IS NON-TRANSFERABLE. THIS SURVEY IS CERTIFIED FOR THIS TRANSACTION ONLY.

ORIGINAL DOCUMENT SIZE: 8.5" X 14"