

HOBBS OCD

## DISTRICT I

1625 N. French Dr., Hobbs, NM 88240

Phone (505) 353-6161 Fax: (505) 353-6162

## DISTRICT II

811 S. First St., Artesia, NM 88210

Phone (505) 748-1283 Fax: (505) 748-9720

## DISTRICT III

1000 Rio Brazos Rd., Aztec, NM 87410

Phone (505) 334-6178 Fax: (505) 334-6170

## DISTRICT IV

1220 S. St. Francis Dr., Santa Fe, NM 87505

Phone (505) 476-3480 Fax: (505) 476-3482

State of New Mexico  
Energy, Minerals and Natural Resources Department

## OIL CONSERVATION DIVISION

1220 South St. Francis Dr.  
Santa Fe, New Mexico 87505

Form C-102

Revised August 1, 2011

Submit one copy to appropriate  
District Office

## WELL LOCATION AND ACREAGE DEDICATION PLAT

☐ AMENDED REPORT

API Number <b>30-025-41238</b>	Pool Code <b>41450 CHM</b>	Pool Name <b>LUSK</b>	Bone Spring <b>CHM North</b>
Property Code <b>39977</b>	Property Name <b>QUERCHO 28 NC FEDERAL</b>		Well Number <b>1H</b>
OGRID No. <b>14744</b>	Operator Name <b>MEWBOURNE OIL COMPANY</b>		Elevation <b>3709'</b>

## Surface Location

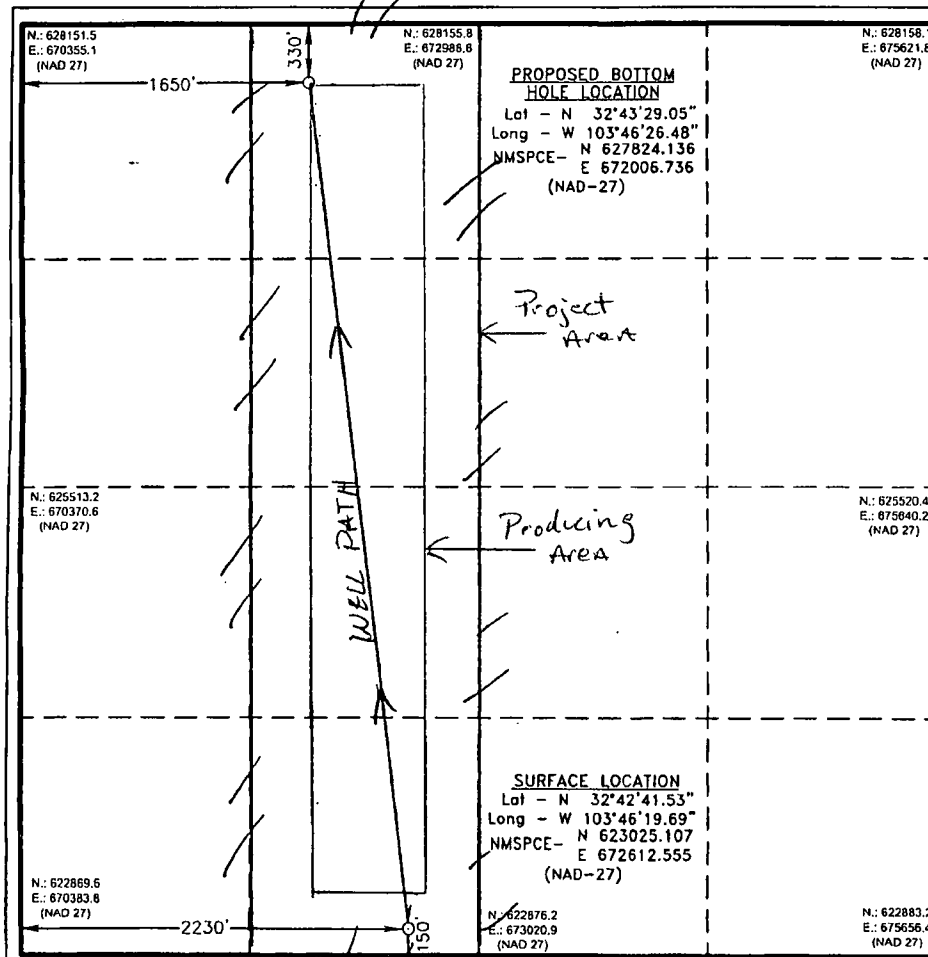
UL or lot No.	Section	Township	Range	Lot Idn	Feet from the	North/South line	Feet from the	East/West line	County
<b>EN</b>	<b>28</b>	<b>18 S</b>	<b>32 E</b>		<b>150</b>	<b>SOUTH</b>	<b>2230</b>	<b>WEST</b>	<b>LEA</b>

## Bottom Hole Location If Different From Surface

UL or lot No.	Section	Township	Range	Lot Idn	Feet from the	North/South line	Feet from the	East/West line	County
<b>NC</b>	<b>28</b>	<b>18 S</b>	<b>32 E</b>		<b>330</b>	<b>NORTH</b>	<b>1650</b>	<b>WEST</b>	<b>LEA</b>

Dedicated Acres	Joint or Infill	Consolidation Code	Order No.
<b>160</b>			

NO ALLOWABLE WILL BE ASSIGNED TO THIS COMPLETION UNTIL ALL INTERESTS HAVE BEEN CONSOLIDATED  
OR A NON-STANDARD UNIT HAS BEEN APPROVED BY THE DIVISION



## OPERATOR CERTIFICATION

I hereby certify that the information contained herein is true and complete to the best of my knowledge and belief, and that this organization either owns a working interest or unleased mineral interest in the land including the proposed bottom hole location or has a right to drill this well at this location pursuant to a contract with an owner of such a mineral or working interest, or to a voluntary pooling agreement or a compulsory pooling order heretofore entered by the division.

**Burdette** 1-17-13  
Signature Date

**BETHOLEX BISHOP**  
Printed Name

Email Address

## SURVEYOR CERTIFICATION

I hereby certify that the well location shown on this plat was plotted from field notes of actual surveys made by me or under my supervision and that the same is true and correct to the best of my belief.

**DECEMBER 1, 2012**  
Date Surveyed

**GARY L. JONES**  
Signature & Seal of Professional Surveyor

Certificate No. **Gary L. Jones 7977**

**BASIN SURVEYS 27783**

NOV 14 2013