

State of New Mexico  
Energy, Minerals and Natural Resources Department

Form C-103  
Revised 5-27-2004

FILE IN TRIPLICATE

OIL CONSERVATION DIVISION

DISTRICT I  
1625 N. French Dr., Hobbs, NM 88240

HOBBS OCD

1220 South St. Francis Dr.  
Santa Fe, NM 87505

DISTRICT II  
1301 W. Grand Ave, Artesia, NM 88210

NOV 18 2013

DISTRICT III  
1000 Rio Brazos Rd, Aztec, NM 87410

|   |
|---|
| WELL API NO.<br>30-025-07484  |
| 5. Indicate Type of Lease<br>STATE <input checked="" type="checkbox"/> FEE <input type="checkbox"/> |
| 6. State Oil & Gas Lease No.  |
| 7. Lease Name or Unit Agreement Name<br>State Section 30  |
| 8. Well No. 6   |
| 9. OGRID No. 017213<br>152984   |
| 10. Pool name or Wildcat<br>Bowers/7 Rivers   |

|   |  |
|---|--|
| SUNDRY NOTICES AND REPORTS ON WELLS<br>(DO NOT USE THIS FORM FOR PROPOSALS TO DRILL OR TO DEEPEN OR PLUG BACK TO A DIFFERENT RESERVOIR. USE "APPLICATION FOR PERMIT" (Form C-101) for such proposals.)  |  |
| 1. Type of Well:<br>Oil Well <input checked="" type="checkbox"/> Gas Well <input type="checkbox"/> Other <input type="checkbox"/> Temporarily Abandoned   |  |
| 2. Name of Operator<br>Occidental Permian Ltd. <i>Oxy USA, Inc.</i>   |  |
| 3. Address of Operator<br>HCR 1 Box 90 Denver City, TX 79323  |  |
| 4. Well Location<br>Unit Letter <u>M</u> : <u>660</u> Feet From The <u>South</u> Line and <u>990</u> Feet From The <u>West</u> Line<br>Section <u>30</u> Township <u>18-S</u> Range <u>38-E</u> NMPM <u>Lea</u> County  |  |
| 11. Elevation (Show whether DF, RKB, RT GR, etc.)<br>3661' DF   |  |
| Pit or Below-grade Tank Application <input type="checkbox"/> or Closure <input type="checkbox"/><br>Pit Type _____ Depth of Ground Water _____ Distance from nearest fresh water well _____ Distance from nearest surface water _____<br>Pit Liner Thickness _____ mil Below-Grade Tank: Volume _____ bbls; Construction Material _____ |  |

|   |   |
|---|---|
| 12. Check Appropriate Box to Indicate Nature of Notice, Report, or Other Data |   |
| NOTICE OF INTENTION TO:   | SUBSEQUENT REPORT OF:   |
| PERFORM REMEDIAL WORK <input type="checkbox"/>                                | REMEDIAL WORK <input type="checkbox"/>  |
| TEMPORARILY ABANDON <input type="checkbox"/>                                  | ALTERING CASING <input type="checkbox"/>  |
| PULL OR ALTER CASING <input type="checkbox"/>                                 | COMMENCE DRILLING OPNS. <input type="checkbox"/>  |
| OTHER: _____  | CASING TEST AND CEMENT JOB <input type="checkbox"/>                                       |
|   | OTHER: <u>Casing Integrity Test/TA Status Request</u> <input checked="" type="checkbox"/> |

13. Describe Proposed or Completed Operations (Clearly state all pertinent details, and give pertinent dates, including estimated date of starting any proposed work) SEE RULE 1103. For Multiple Completions: Attach wellbore diagram of proposed completion or recompletion.

Date of Test: 11/13/2013

Pressure Readings: Initial - 560 PSI; 15 min - 555 PSI; 30 min - 550 PSI

Length of test: 30 minutes

Witnessed: NO

CIBP @3140'  
Top Perf @3197'

This Approval of Temporary  
Abandonment Expires 11/13/2018

I hereby certify that the information above is true and complete to the best of my knowledge and belief. I further certify that any pit or below-grade tank has been/will be constructed or closed according to NMOCD guidelines ☐ , a general permit ☐ or an (attached) alternative OCD-approved plan ☐

SIGNATURE Mendy A Johnson TITLE Administrative Associate DATE 11/15/2013  
TYPE OR PRINT NAME Mendy A. Johnson E-mail address: mendy\_johnson@oxy.com TELEPHONE NO. 806-592-6280

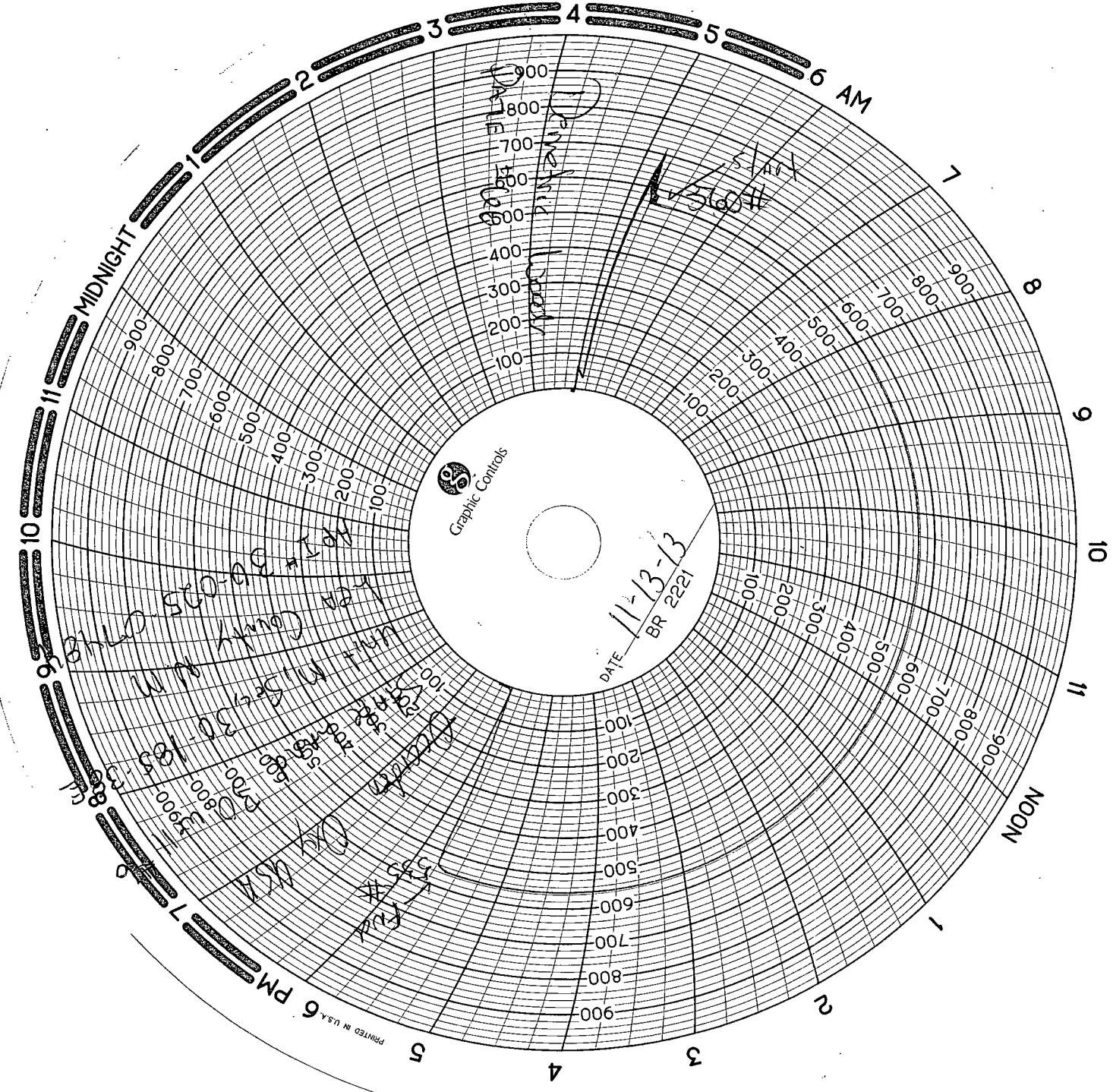
For State Use Only  
APPROVED BY Mary Brown TITLE Compliance Officer DATE 11/18/2013  
CONDITIONS OF APPROVAL IF ANY:

NOV 20 2013



DATE 11-13-13  
BR 2221

PRINTED IN U.S.A.



Unit M-505  
1-84 Calky W.M.  
06-035  
07-118  
08-114  
09-114  
10-114  
11-114  
12-114  
13-114  
14-114  
15-114  
16-114  
17-114  
18-114  
19-114  
20-114  
21-114  
22-114  
23-114  
24-114  
25-114  
26-114  
27-114  
28-114  
29-114  
30-114  
31-114  
32-114  
33-114  
34-114  
35-114  
36-114  
37-114  
38-114  
39-114  
40-114  
41-114  
42-114  
43-114  
44-114  
45-114  
46-114  
47-114  
48-114  
49-114  
50-114  
51-114  
52-114  
53-114  
54-114  
55-114  
56-114  
57-114  
58-114  
59-114  
60-114  
61-114  
62-114  
63-114  
64-114  
65-114  
66-114  
67-114  
68-114  
69-114  
70-114  
71-114  
72-114  
73-114  
74-114  
75-114  
76-114  
77-114  
78-114  
79-114  
80-114  
81-114  
82-114  
83-114  
84-114  
85-114  
86-114  
87-114  
88-114  
89-114  
90-114  
91-114  
92-114  
93-114  
94-114  
95-114  
96-114  
97-114  
98-114  
99-114  
100-114

Unit M-505  
1-84 Calky W.M.  
06-035  
07-118  
08-114  
09-114  
10-114  
11-114  
12-114  
13-114  
14-114  
15-114  
16-114  
17-114  
18-114  
19-114  
20-114  
21-114  
22-114  
23-114  
24-114  
25-114  
26-114  
27-114  
28-114  
29-114  
30-114  
31-114  
32-114  
33-114  
34-114  
35-114  
36-114  
37-114  
38-114  
39-114  
40-114  
41-114  
42-114  
43-114  
44-114  
45-114  
46-114  
47-114  
48-114  
49-114  
50-114  
51-114  
52-114  
53-114  
54-114  
55-114  
56-114  
57-114  
58-114  
59-114  
60-114  
61-114  
62-114  
63-114  
64-114  
65-114  
66-114  
67-114  
68-114  
69-114  
70-114  
71-114  
72-114  
73-114  
74-114  
75-114  
76-114  
77-114  
78-114  
79-114  
80-114  
81-114  
82-114  
83-114  
84-114  
85-114  
86-114  
87-114  
88-114  
89-114  
90-114  
91-114  
92-114  
93-114  
94-114  
95-114  
96-114  
97-114  
98-114  
99-114  
100-114

Unit M-505  
1-84 Calky W.M.  
06-035  
07-118  
08-114  
09-114  
10-114  
11-114  
12-114  
13-114  
14-114  
15-114  
16-114  
17-114  
18-114  
19-114  
20-114  
21-114  
22-114  
23-114  
24-114  
25-114  
26-114  
27-114  
28-114  
29-114  
30-114  
31-114  
32-114  
33-114  
34-114  
35-114  
36-114  
37-114  
38-114  
39-114  
40-114  
41-114  
42-114  
43-114  
44-114  
45-114  
46-114  
47-114  
48-114  
49-114  
50-114  
51-114  
52-114  
53-114  
54-114  
55-114  
56-114  
57-114  
58-114  
59-114  
60-114  
61-114  
62-114  
63-114  
64-114  
65-114  
66-114  
67-114  
68-114  
69-114  
70-114  
71-114  
72-114  
73-114  
74-114  
75-114  
76-114  
77-114  
78-114  
79-114  
80-114  
81-114  
82-114  
83-114  
84-114  
85-114  
86-114  
87-114  
88-114  
89-114  
90-114  
91-114  
92-114  
93-114  
94-114  
95-114  
96-114  
97-114  
98-114  
99-114  
100-114