

Submit 1 Copy To Appropriate District
Office
District I - (575) 393-6161
1625 N. French Dr., Hobbs, NM 88240
District II - (575) 748-1283
811 S. First St., Artesia, NM 88210
District III - (505) 334-6178
1000 Rio Brazos Rd., Aztec, NM 87410
District IV - (505) 476-3460
1220 S. St. Francis Dr., Santa Fe, NM
87505

State of New Mexico
Energy, Minerals and Natural Resources

Form C-103
Revised July 18, 2013

HOBBBS OCD

OIL CONSERVATION DIVISION

NOV 25 2013

220 South St. Francis Dr.
Santa Fe, NM 87505

SUNDRY NOTICES AND REPORTS ON WELLS (DO NOT USE THIS FORM FOR PROPOSALS TO DRILL OR TO DEEPEN OR PLUG BACK TO A DIFFERENT RESERVOIR. USE "APPLICATION FOR PERMIT" (FORM C-101) FOR SUCH PROPOSALS.) 1. Type of Well: Oil Well <input checked="" type="checkbox"/> Gas Well <input type="checkbox"/> Other <input type="checkbox"/>		WELL API NO. 30-025-41302
2. Name of Operator Devon Energy Production Company, LP 405-228-7203		5. Indicate Type of Lease STATE <input checked="" type="checkbox"/> FEE <input type="checkbox"/>
3. Address of Operator 333 West. Sheridan Avenue Oklahoma City, OK 73102-5015 405-228-7203		6. State Oil & Gas Lease No.
4. Well Location Unit Letter <u>P</u> : <u>200</u> feet from the <u>SOUTH</u> line and <u>660</u> feet from the <u>EAST</u> line Section <u>34</u> Township <u>23S</u> Range <u>33E</u> NMPM Lea County		7. Lease Name or Unit Agreement Name Thistle Unit
11. Elevation (Show whether DR, RKB, RT, GR, etc.) 3633.2		8. Well Number 50
		9. OGRID Number 6137
		10. Pool name or Wildcat TRIPLE X; BONE SPRING

12. Check Appropriate Box to Indicate Nature of Notice, Report or Other Data

NOTICE OF INTENTION TO:

PERFORM REMEDIAL WORK ☐ PLUG AND ABANDON ☐
TEMPORARILY ABANDON ☐ CHANGE PLANS ☐
PULL OR ALTER CASING ☐ MULTIPLE COMPL ☐
DOWNHOLE COMMINGLE ☐
CLOSED-LOOP SYSTEM ☐
OTHER: Name Correction ☒

SUBSEQUENT REPORT OF:

REMEDIAL WORK ☐ ALTERING CASING ☐
COMMENCE DRILLING OPNS. ☐ P AND A ☐
CASING/CEMENT JOB ☐
OTHER: ☐

13. Describe proposed or completed operations. (Clearly state all pertinent details, and give pertinent dates, including estimated date of starting any proposed work). SEE RULE 19.15.7.14 NMAC. For Multiple Completions: Attach wellbore diagram of proposed completion or recompletion.

Devon Energy Production Company, L.P. respectfully requests to correct the name of the subject well. Please see the correction below.

FROM: Thistle Unit 50
TO: Thistle Unit 50H

I hereby certify that the information above is true and complete to the best of my knowledge and belief.

SIGNATURE

Trina C. Couch

TITLE: Regulatory Associate

DATE 11/21/2013

Type or print name: Trina C. Couch

E-mail address: trina.couch@devn.com

PHONE: 405-228-7203

For State Use Only

APPROVED BY:

[Signature]

TITLE

Petroleum Engineer

DATE

DEC 02 2013

Conditions of Approval (if any):

DEC 02 2013

District I
1625 N. French Dr., Hobbs, NM 88240
Phone: (575) 393-6161 Fax: (575) 393-0720

District II
511 S. First St., Artesia, NM 88210
Phone: (575) 748-1283 Fax: (575) 748-0720

District III
1000 Rio Brazos Road, Aztec, NM 87410
Phone: (505) 334-6178 Fax: (505) 334-6170

District IV
1220 S. St. Francis Dr., Santa Fe, NM 87505
Phone: (505) 476-3460 Fax: (505) 476-3462

HOBBS OCD
NOV 31 2013
RECEIVED

State of New Mexico
Energy, Minerals & Natural Resources Department
OIL CONSERVATION DIVISION
1220 South St. Francis Dr.
Santa Fe, NM 87505

HOBBS OCD

NOV 25 2013

RECEIVED

Form C-102
Revised August 1, 2011
Submit one copy to appropriate
District Office

☐ AMENDED REPORT

WELL LOCATION AND ACREAGE DEDICATION PLAT

¹ API Number 30-025-41302	² Pool Code 59900	³ Pool Name TRIPLE X; BONE SPRING
⁴ Property Code 30884	⁵ Property Name THISTLE UNIT	⁶ Well Number 50H
⁷ OGRID No. 6137	⁸ Operator Name DEVON ENERGY PRODUCTION COMPANY, L.P.	⁹ Elevation 3633.2

¹⁰ Surface Location

UL or lot no.	Section	Township	Range	Lot Idn	Feet from the	North/South line	Feet from the	East/West line	County
P	34	23 S	33 E		200	SOUTH	660	EAST	LEA

¹¹ Bottom Hole Location If Different From Surface

UL or lot no.	Section	Township	Range	Lot Idn	Feet from the	North/South line	Feet from the	East/West line	County
A	34	23 S	33 E		330	NORTH	660	EAST	LEA

¹² Dedicated Acres 160	¹³ Joint or Infill	¹⁴ Consolidation Code	¹⁵ Order No.
---	-------------------------------	----------------------------------	-------------------------

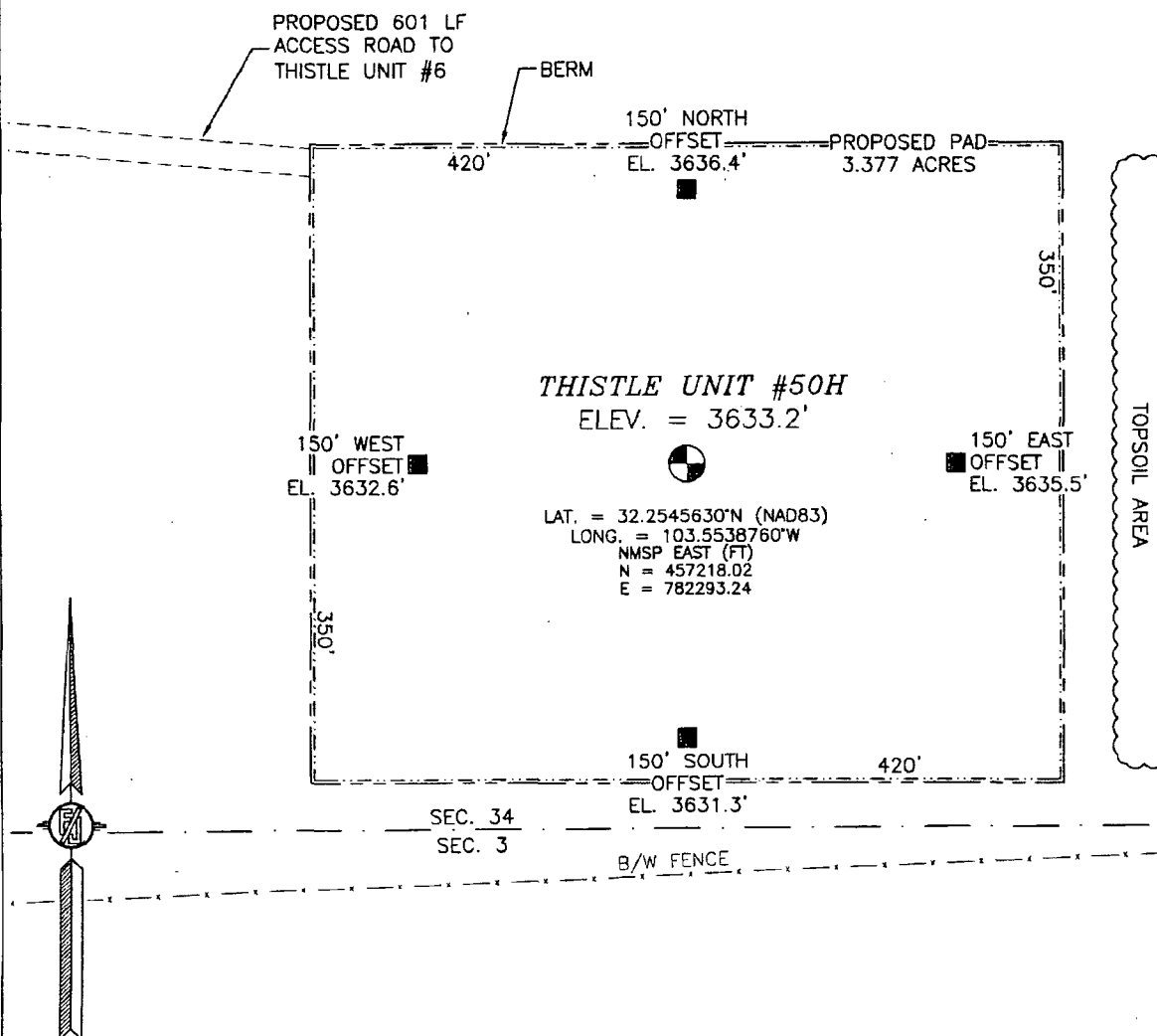
No allowable will be assigned to this completion until all interests have been consolidated or a non-standard unit has been approved by the division.

<p>N89°41'34"E 2640.56 FT</p> <p>NW CORNER SEC. 34 LAT. = 32.2685723°N LONG. = 103.5688255°W NMSP EAST (FT) N = 462281.34 E = 777635.45</p> <p>W Q CORNER SEC. 34 LAT. = 32.2613005°N LONG. = 103.5688182°W NMSP EAST (FT) N = 459635.90 E = 777656.55</p> <p>SW CORNER SEC. 34 LAT. = 32.2540344°N LONG. = 103.5688168°W NMSP EAST (FT) N = 456992.49 E = 777675.80</p> <p>NOTE: LATITUDE AND LONGITUDE COORDINATES ARE SHOWN USING THE NORTH AMERICAN DATUM OF 1983 (NAD83). LISTED NEW MEXICO STATE PLANE EAST COORDINATES ARE GRID (NAD83). BASIS OF BEARING AND DISTANCES USED ARE NEW MEXICO STATE PLANE EAST COORDINATES MODIFIED TO THE SURFACE.</p>		<p>N89°41'34"E 2640.56 FT</p> <p>NE CORNER SEC. 34 LAT. = 32.2685456°N LONG. = 103.5517436°W NMSP EAST (FT) N = 462309.64 E = 7822915.41</p> <p>SE CORNER SEC. 34 LAT. = 32.2540100°N LONG. = 103.5517413°W NMSP EAST (FT) N = 457021.62 E = 782954.62</p>		<p>¹⁷ OPERATOR CERTIFICATION</p> <p>I hereby certify that the information contained herein is true and complete to the best of my knowledge and belief, and that this organization either owns a working interest or unleased mineral interest in the land including the proposed bottom hole location or has a right to drill this well at this location pursuant to a contract with an owner of such a mineral or working interest, or to a voluntary pooling agreement or a compulsory pooling order heretofore entered by the division.</p> <p><i>[Signature]</i> 7/30/2013 Signature Date David H. Cook Regulatory Specialist Printed Name david.cook@dmr.com E-mail Address</p> <p>¹⁸ SURVEYOR CERTIFICATION</p> <p>I hereby certify that the well location shown on this plat was plotted from field notes of actual surveys made by me or under my supervision, and that the same is true and correct to the best of my belief.</p> <p>MAY 23, 2013 Date of Survey</p> <p><i>[Signature]</i> Signature and Seal of Professional Surveyor Certificate Number: FILMON F. JARAMILLO, PLS 12797 REGISTERED LAND SURVEYOR NO. 1885</p>	
--	--	--	--	---	--

OCT 17 2013

SECTION 34, TOWNSHIP 23 SOUTH, RANGE 33 EAST, N.M.P.M.
LEA COUNTY, STATE OF NEW MEXICO
SITE MAP

NOTE: LATITUDE AND LONGITUDE COORDINATES ARE SHOWN USING THE NORTH AMERICAN DATUM OF 1983 (NAD83). LISTED NEW MEXICO STATE PLANE EAST COORDINATES ARE GRID (NAD83). BASIS OF BEARING AND DISTANCES USED ARE NEW MEXICO STATE PLANE EAST COORDINATES MODIFIED TO THE SURFACE



010 50 100 200

SCALE 1" = 100'

DIRECTIONS TO LOCATION

FROM THE INTERSECTION OF STATE HIGHWAY 128 AND CR J2 (BRINSTOOL) GO NORTHWEST ON CR J2 FOR APPROX. 3.2 MILES. GO EAST ON CALICHE LEASE ROAD FOR APPROX. 0.45 OF A MILE. CONTINUE NORTHEAST APPROX. 220 FT. CONTINUE EAST APPROX. 0.3 OF A MILE TO THISTLE UNIT #6 WELL. FROM SOUTHEAST CORNER PAD GO EAST APPROX. 600 FT. TO NORTHWEST PAD CORNER. LOCATION IS APPROX. 267 FT. SOUTHEAST.

DEVON ENERGY PRODUCTION COMPANY, L.P.
THISTLE UNIT #50H

LOCATED 200 FT. FROM THE SOUTH LINE
AND 660 FT. FROM THE EAST LINE OF
SECTION 34, TOWNSHIP 23 SOUTH,
RANGE 33 EAST, N.M.P.M.
LEA COUNTY, STATE OF NEW MEXICO

MAY 23, 2013

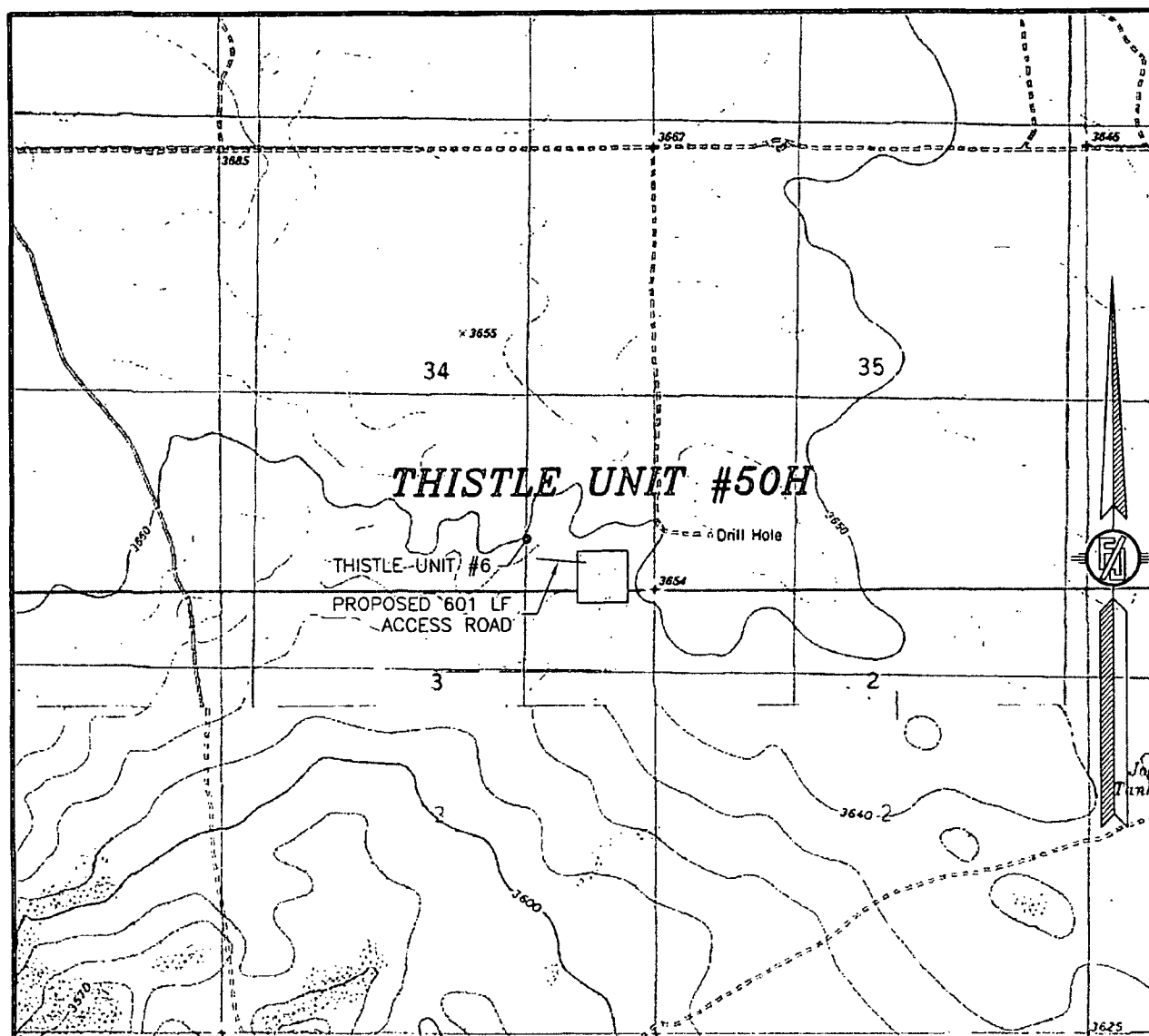
SURVEY NO. 1885

MADRON SURVEYING, INC.

301 SOUTH CANAL
(575) 234-3341

CARLSBAD, NEW MEXICO

SECTION 34, TOWNSHIP 23 SOUTH, RANGE 33 EAST, N.M.P.M.
LEA COUNTY, STATE OF NEW MEXICO
LOCATION VERIFICATION MAP



USGS QUAD MAP:
TIP TOP WELLS

NOT TO SCALE

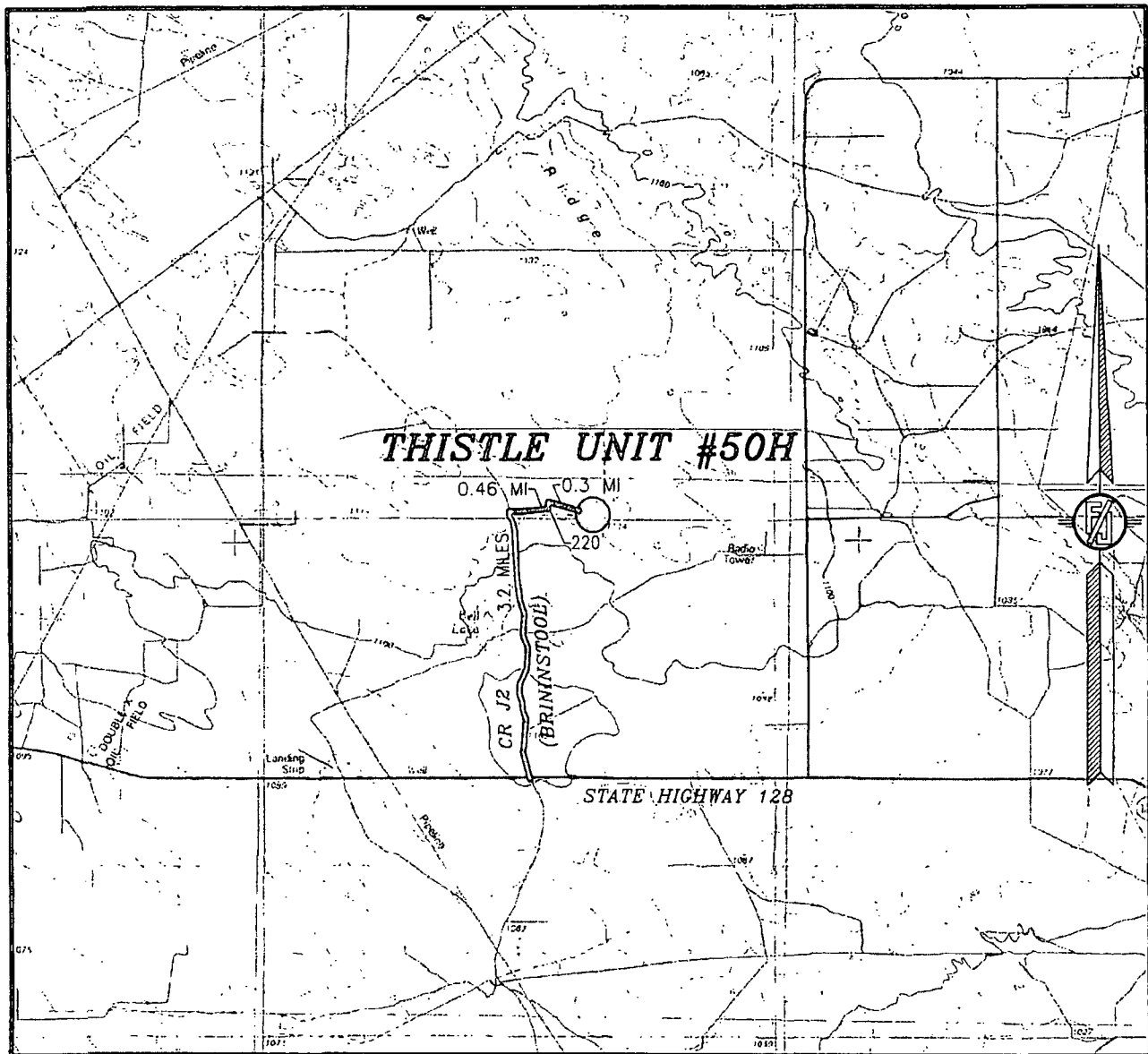
DEVON ENERGY PRODUCTION COMPANY, L.P.
THISTLE UNIT #50H
LOCATED 200 FT. FROM THE SOUTH LINE
AND 660 FT. FROM THE EAST LINE OF
SECTION 34, TOWNSHIP 23 SOUTH,
RANGE 33 EAST, N.M.P.M.
LEA COUNTY, STATE OF NEW MEXICO

MAY 23, 2013

SURVEY NO. 1885

MADRON SURVEYING, INC. 301 SOUTH CANAL (575) 234-3341 CARLSBAD, NEW MEXICO

SECTION 34, TOWNSHIP 23 SOUTH, RANGE 33 EAST, N.M.P.M.
LEA COUNTY, STATE OF NEW MEXICO
VICINITY MAP



NOT TO SCALE

DEVON ENERGY PRODUCTION COMPANY, L.P.

THISTLE UNIT #50H

LOCATED 200 FT. FROM THE SOUTH LINE
AND 660 FT. FROM THE EAST LINE OF
SECTION 34, TOWNSHIP 23 SOUTH,
RANGE 33 EAST, N.M.P.M.
LEA COUNTY, STATE OF NEW MEXICO

MAY 23, 2013

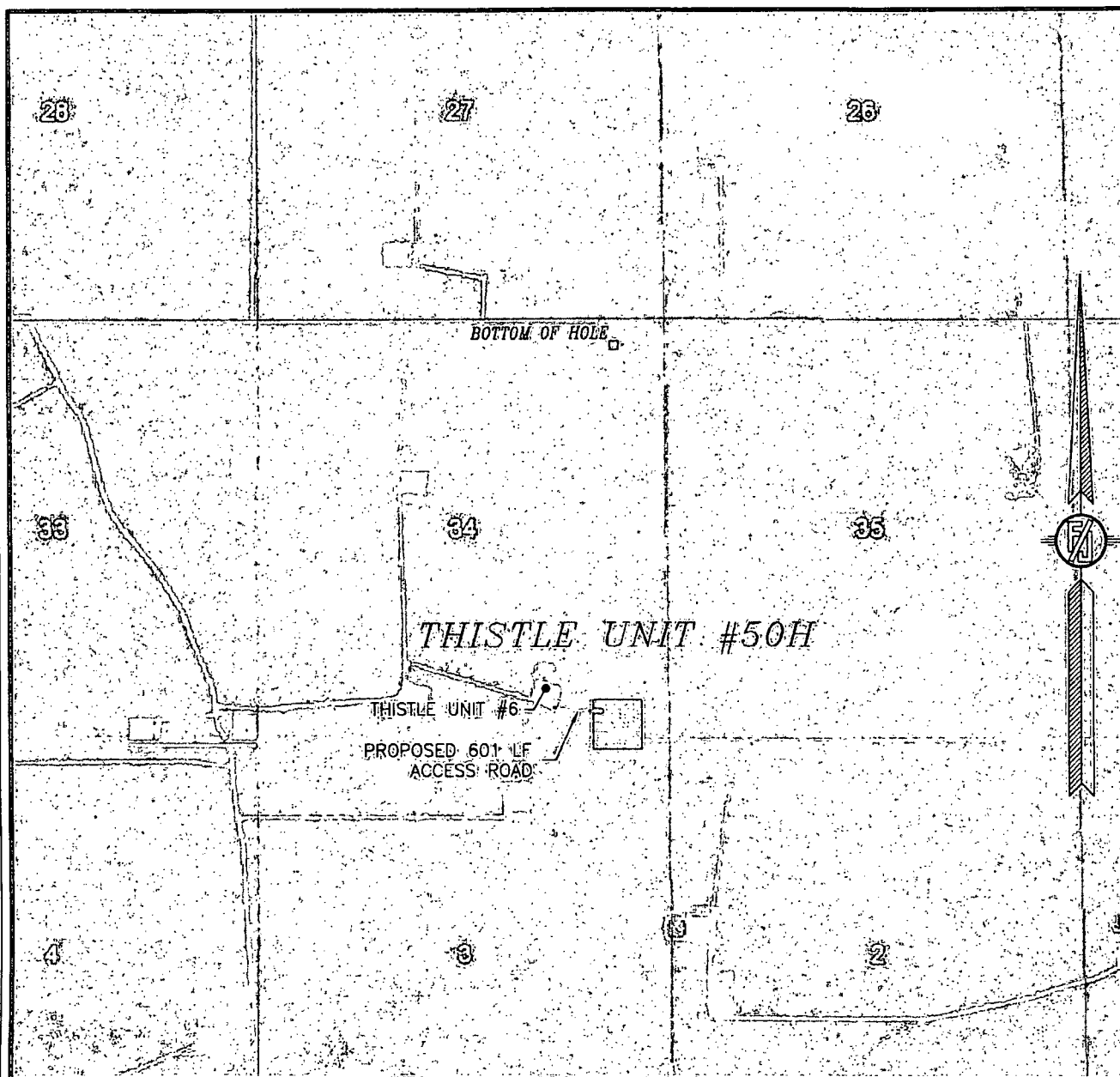
DIRECTIONS TO LOCATION

FROM THE INTERSECTION OF STATE HIGHWAY 128 AND CR J2
(BRINSTOOL) GO NORTHWEST ON CR J2 FOR APPROX. 3.2 MILES.
GO EAST ON CALICHE LEASE ROAD FOR APPROX. 0.46 OF A MILE.
CONTINUE NORTHEAST APPROX. 220 FT. CONTINUE EAST APPROX. 0.3
OF A MILE TO THISTLE UNIT #6 WELL. FROM SOUTHEAST CORNER PAD
GO EAST APPROX. 600 FT. TO NORTHWEST PAD CORNER. LOCATION IS
APPROX. 267 FT. SOUTHEAST.

SURVEY NO. 1885

MADRON SURVEYING, INC. 301 SOUTH CANAL (575) 234-3341 CARLSBAD, NEW MEXICO

SECTION 34, TOWNSHIP 23 SOUTH, RANGE 33 EAST, N.M.P.M.
LEA COUNTY, STATE OF NEW MEXICO
AERIAL PHOTO



NOT TO SCALE
AERIAL PHOTO:
GOOGLE EARTH
MARCH 2012

DEVON ENERGY PRODUCTION COMPANY, L.P.

THISTLE UNIT #50H

LOCATED 200 FT. FROM THE SOUTH LINE
AND 660 FT. FROM THE EAST LINE OF
SECTION 34, TOWNSHIP 23 SOUTH,
RANGE 33 EAST, N.M.P.M.
LEA COUNTY, STATE OF NEW MEXICO

MAY 23, 2013

SURVEY NO. 1885

MADRON SURVEYING, INC. 301 SOUTH CANAL (575) 234-3341 CARLSBAD, NEW MEXICO