

District I
1625 N. French Dr., Hobbs, NM 88240
Phone: (575) 393-6161 Fax: (575) 393-0720
District II
811 S. First St., Artesia, NM 88210
Phone: (575) 748-1283 Fax: (575) 748-9720
District III
1000 Rio Brazos Road, Aztec, NM 87410
Phone: (505) 334-6178 Fax: (505) 334-6170
District IV
1220 S. St. Francis Dr., Santa Fe, NM 87505
Phone: (505) 476-3460 Fax: (505) 476-3462

HOBBS OCD

State of New Mexico

Energy, Minerals & Natural Resources Department

OIL CONSERVATION DIVISION

1220 South St. Francis Dr.

Santa Fe, NM 87505

Form C-102

Revised August 1, 2011

Submit one copy to appropriate

District Office

RECEIVED

☐ AMENDED REPORT

WELL LOCATION AND ACREAGE DEDICATION PLAT

| | | |
|--|--|--|
| ¹ API Number 30-025-41524 | ² Pool Code 96101 | ³ Pool Name SWD; Devonian |
| ⁴ Property Code 40261 | ⁵ Property Name COTTON DRAW 32 STATE SWD | |
| ⁷ OGRID No. 6137 | ⁸ Operator Name DEVON ENERGY PRODUCTION COMPANY, L.P. | |
| | | ⁶ Well Number 2 |
| | | ⁹ Elevation 3477.7 |

¹⁰ Surface Location

| UL or lot no. | Section | Township | Range | Lot Idn | Feet from the | North/South line | Feet from the | East/West line | County |
|---------------|-----------|-------------|-------------|---------|---------------|------------------|---------------|----------------|------------|
| P | 32 | 24 S | 32 E | | 1180 | SOUTH | 1000 | EAST | LEA |

¹¹ Bottom Hole Location If Different From Surface

| UL or lot no. | Section | Township | Range | Lot Idn | Feet from the | North/South line | Feet from the | East/West line | County |
|---------------|---------|----------|-------|---------|---------------|------------------|---------------|----------------|--------|
| | | | | | | | | | |

| | | | |
|--|-------------------------------|----------------------------------|-------------------------|
| ¹² Dedicated Acres 40 | ¹³ Joint or Infill | ¹⁴ Consolidation Code | ¹⁵ Order No. |
|--|-------------------------------|----------------------------------|-------------------------|

No allowable will be assigned to this completion until all interests have been consolidated or a non-standard unit has been approved by the division.

| | | | | | |
|---|--|--|--|---|--|
| <p>S89°21'26"E 2641.44 FT</p> <p>NW CORNER SEC. 32 LAT. = 32.1814554°N LONG. = 103.7052212°W NMSP EAST (FT) N = 430315.49 E = 735662.02</p> | | <p>S89°22'05"E 2641.37 FT</p> <p>N/4 CORNER SEC. 32 LAT. = 32.1813313°N LONG. = 103.6966868°W NMSP EAST (FT) N = 430285.86 E = 738302.72</p> | | <p>NE CORNER SEC. 32 LAT. = 32.1812080°N LONG. = 103.6881525°W NMSP EAST (FT) N = 430256.73 E = 740943.35</p> | |
| <p>NOTE: LATITUDE AND LONGITUDE COORDINATES ARE SHOWN USING THE NORTH AMERICAN DATUM OF 1983 (NAD83). LISTED NEW MEXICO STATE PLANE EAST COORDINATES ARE GRID (NAD83). BASIS OF BEARING AND DISTANCES USED ARE NEW MEXICO STATE PLANE EAST COORDINATES MODIFIED TO THE SURFACE.</p> | | | | | |
| <p>W/4 CORNER SEC. 32 LAT. = 32.1742024°N LONG. = 103.7052003°W NMSP EAST (FT) N = 427676.95 E = 735683.89</p> | | <p>E/4 CORNER SEC. 32 LAT. = 32.1739477°N LONG. = 103.6881392°W NMSP EAST (FT) N = 427615.56 E = 740963.30</p> | | | |
| <p>COTTON DRAW "32" STATE 2 SWD ELEV. = 3477.7' LAT. = 32.1699175°N (NAD83) LONG. = 103.6913616°W NMSP EAST (FT) N = 426143.43 E = 739975.03</p> | | | | | |
| <p>SW CORNER SEC. 32 LAT. = 32.1666259°N LONG. = 103.7051851°W NMSP EAST (FT) N = 424920.75 E = 735704.70</p> | | <p>S/4 CORNER SEC. 32 LAT. = 32.1666550°N LONG. = 103.6966577°W NMSP EAST (FT) N = 424946.85 E = 738343.32</p> | | <p>SE CORNER SEC. 32 LAT. = 32.1666862°N LONG. = 103.6881233°W NMSP EAST (FT) N = 424973.90 E = 740984.06</p> | |
| <p>1000' SURFACE LOCATION</p> | | | | | |

S89°26'00"W 2639.32 FT

S89°24'47"W 2641.46 FT

¹⁷ OPERATOR CERTIFICATION

I hereby certify that the information contained herein is true and complete to the best of my knowledge and belief, and that this organization either owns a working interest or unleased mineral interest in the land including the proposed bottom hole location or has a right to drill this well at this location pursuant to a contract with an owner of such a mineral or working interest, or to a voluntary pooling agreement or a compulsory pooling order heretofore entered by the division.

Patti Riechers 11/20/2013
Signature Date
Patti Riechers, Regulatory Specialist
Printed Name
patti.riechers@dvn.com
E-mail Address

¹⁸ SURVEYOR CERTIFICATION

I hereby certify that the well location shown on this plat was plotted from field notes of actual surveys made by me or under my supervision, and that the same is true and correct to the best of my belief.

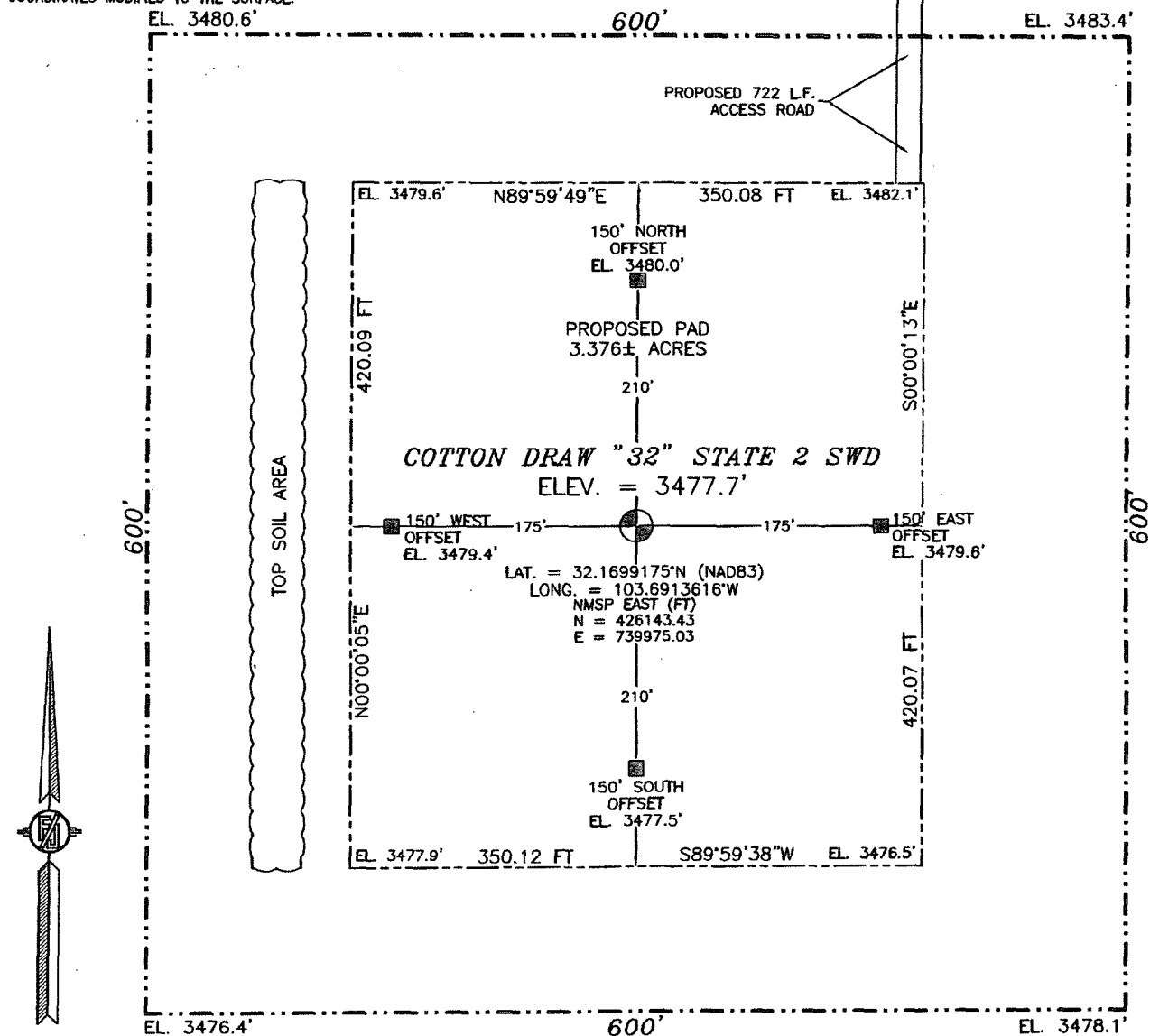
AUGUST 9, 2013
Date of Survey

[Signature]
Signature and Seal of Professional Surveyor
Certificate Number FIRMON F. JARAMILLO, PLS 12797
SURVEY NO. 2180

DEC 02 2013

SECTION 32, TOWNSHIP 24 SOUTH, RANGE 32 EAST, N.M.P.M. LEA COUNTY, STATE OF NEW MEXICO SITE MAP

NOTE: LATITUDE AND LONGITUDE COORDINATES ARE SHOWN USING THE NORTH AMERICAN DATUM OF 1983 (NAD83). LISTED NEW MEXICO STATE PLANE EAST COORDINATES ARE GRID (NAD83). BASIS OF BEARING AND DISTANCES USED ARE NEW MEXICO STATE PLANE EAST COORDINATES MODIFIED TO THE SURFACE.



010 50 100 200

SCALE 1" = 100'

DIRECTIONS TO LOCATION

FROM THE INTERSECTION OF STATE HWY #128 AND HWY #1 (ORLA HWY) GO SOUTH ON HWY #1 (ORLA HWY) APPROX. 2.4 MILES TO LEASE ROAD ON RIGHT (WEST) TURN WEST ON LEASE ROAD GO APPROX. 1.0 MILES ROAD TURNS LEFT (SOUTH) TURN SOUTH GO APPROX. 0.6 MILES TO EXISTING PAD AT THE SOUTHWEST CORNER PAD IS A ROAD LATH WITH RED AND WHITE FLAGGING FOLLOW LATHS SOUTH APPROX. 720 FEET TO LOCATION

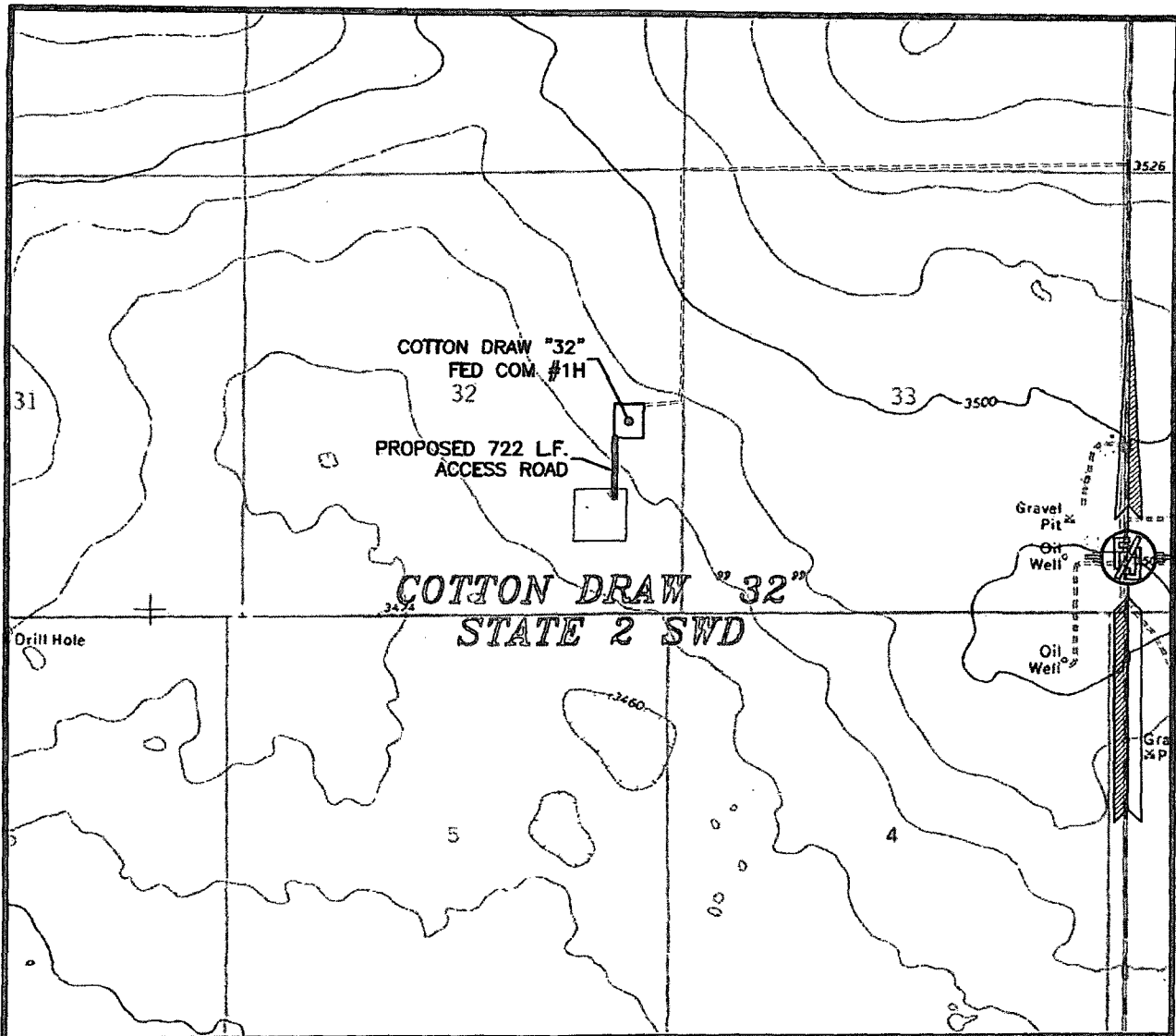
DEVON ENERGY PRODUCTION COMPANY, L.P.
COTTON DRAW "32" STATE 2 SWD
LOCATED 1180 FT. FROM THE SOUTH LINE
AND 1000 FT. FROM THE EAST LINE OF
SECTION 32, TOWNSHIP 24 SOUTH,
RANGE 32 EAST, N.M.P.M.
LEA COUNTY, STATE OF NEW MEXICO

AUGUST 9, 2013

SURVEY NO. 2180

MADRON SURVEYING, INC. 301 SOUTH CANAL (575) 234-3341 CARLSBAD, NEW MEXICO

SECTION 32, TOWNSHIP 24 SOUTH, RANGE 32 EAST, N.M.P.M.
LEA COUNTY, STATE OF NEW MEXICO
LOCATION VERIFICATION MAP



USGS QUAD MAP:
PADUCA BREAKS NW

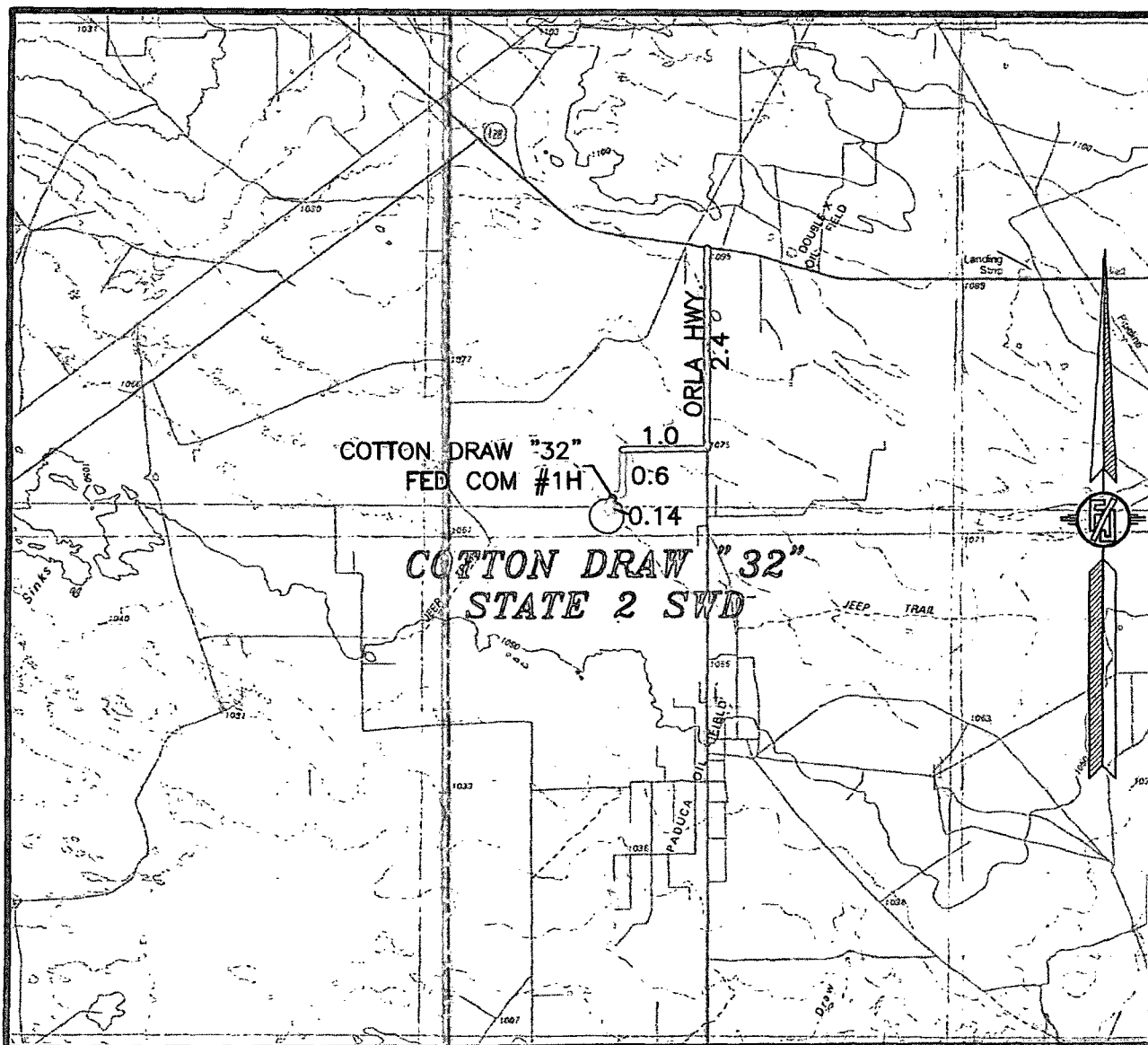
NOT TO SCALE

DEVON ENERGY PRODUCTION COMPANY, L.P.
COTTON DRAW "32" STATE 2 SWD
LOCATED 1180 FT. FROM THE SOUTH LINE
AND 1000 FT. FROM THE EAST LINE OF
SECTION 32, TOWNSHIP 24 SOUTH,
RANGE 32 EAST, N.M.P.M.
LEA COUNTY, STATE OF NEW MEXICO

AUGUST 9, 2013

MADRON SURVEYING, INC. 301 SOUTH CANAL (575) 234-3341 CARLSBAD, NEW MEXICO SURVEY NO. 2180

SECTION 32, TOWNSHIP 24 SOUTH, RANGE 32 EAST, N.M.P.M.
LEA COUNTY, STATE OF NEW MEXICO
VICINITY MAP



DISTANCES IN MILES

NOT TO SCALE

DIRECTIONS TO LOCATION

DIRECTIONS TO LOCATION
FROM THE INTERSECTION OF STATE HWY #128 AND HWY #1 (ORLA HWY) GO SOUTH ON HWY #1 (ORLA HWY) APPROX. 2.4 MILES TO LEASE ROAD ON RIGHT (WEST) TURN WEST ON LEASE ROAD GO APPROX. 1.0 MILES ROAD TURNS LEFT (SOUTH) TURN SOUTH GO APPROX. 0.6 MILES TO EXISTING PAD AT THE SOUTHWEST CORNER PAD IS A ROAD LATH WITH RED AND WHITE FLAGGING FOLLOW LATHS SOUTH APPROX. 720 FEET TO LOCATION

DEVON ENERGY PRODUCTION COMPANY, L.P.

COTTON DRAW "32" STATE 2 SWD
LOCATED 1180 FT. FROM THE SOUTH LINE
AND 1000 FT. FROM THE EAST LINE OF
SECTION 32, TOWNSHIP 24 SOUTH,
RANGE 32 EAST, N.M.P.M.
LEA COUNTY, STATE OF NEW MEXICO

AUGUST 9, 2013

SURVEY NO. 2180

MADRON SURVEYING, INC. 301 SOUTH CANAL
(575) 234-3341

CARLSBAD, NEW MEXICO