

DISTRICT I
1625 N. French Dr., Hobbs, NM 88240
Phone: (575) 393-6161 Fax: (575) 393-0720

DISTRICT II
811 S. First St., Artesia, NM 88210
Phone: (575) 748-1283 Fax: (575) 748-9720

DISTRICT III
1000 Rio Brazos Road, Aztec, NM 87410
Phone: (505) 334-6178 Fax: (505) 334-6170

DISTRICT IV
1220 S. St. Francis Dr., Santa Fe, NM 87505
Phone: (505) 476-3460 Fax: (505) 476-3462

State of New Mexico
Energy, Minerals & Natural Resources Department
OIL CONSERVATION DIVISION
1220 South St. Francis Dr.
Santa Fe, New Mexico 87505

Form C-102
Revised August 1, 2011
Submit one copy to appropriate
District Office

☐ AMENDED REPORT

WELL LOCATION AND ACREAGE DEDICATION PLAT

API Number		Pool Code	Pool Name WOLFCAMP-WILDCAT
Property Code 40064	Property Name WEST COPPERLINE 29 STATE COM		Well Number 3H
OGRID No. 249099	Operator Name CAZA OPERATING, LLC		Elevation 3539'

Surface Location

UL or lot No.	Section	Township	Range	Lot Idn	Feet from the	North/South line	Feet from the	East/West line	County
C	29	23-S	34-E		150	NORTH	1980	WEST	LEA

Bottom Hole Location If Different From Surface

UL or lot No.	Section	Township	Range	Lot Idn	Feet from the	North/South line	Feet from the	East/West line	County
F	29	23-S	34-E		2308	NORTH	1980	WEST	LEA

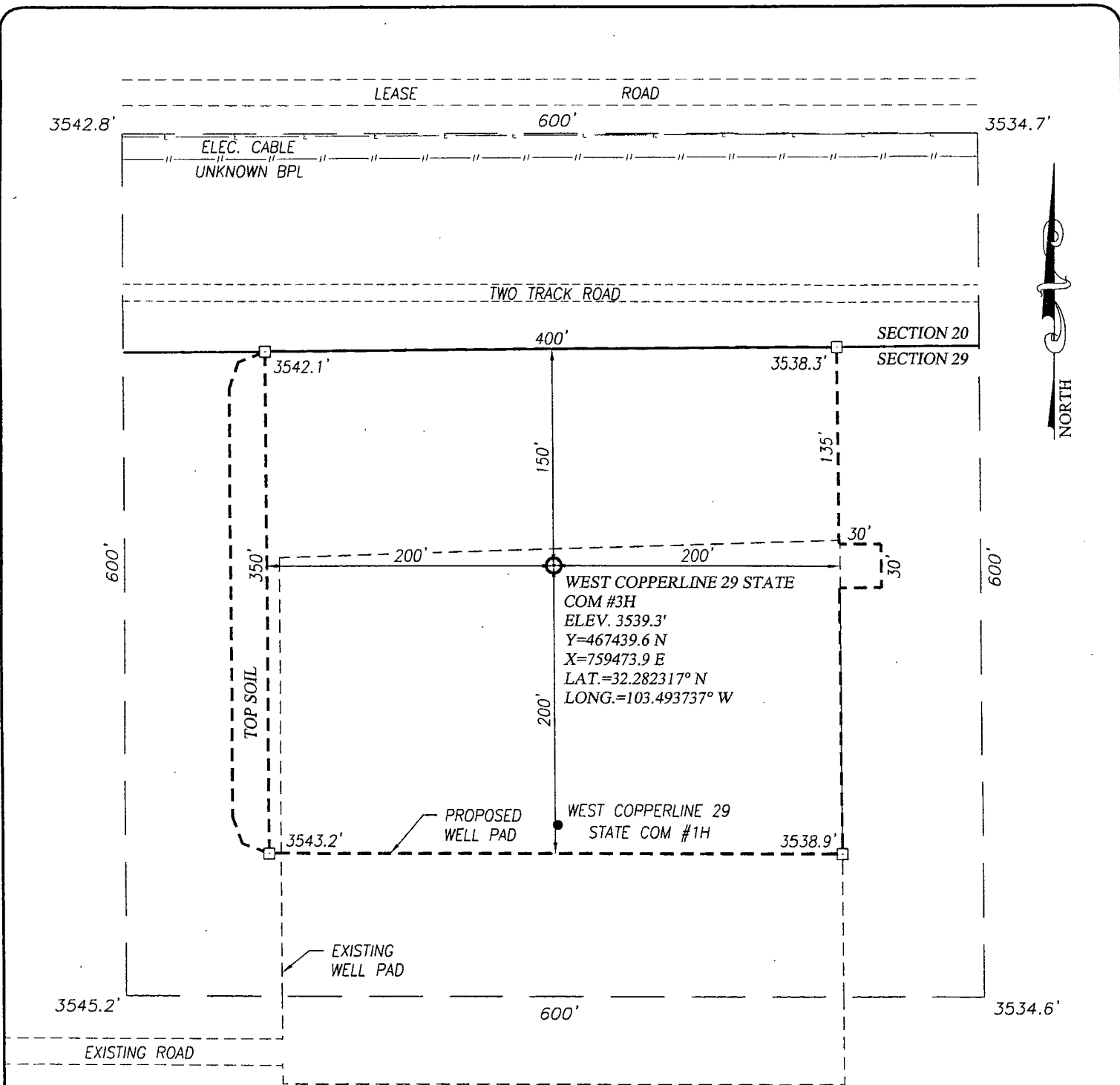
Dedicated Acres 80	Joint or Infill	Consolidation Code	Order No.
-----------------------	-----------------	--------------------	-----------

NO ALLOWABLE WILL BE ASSIGNED TO THIS COMPLETION UNTIL ALL INTERESTS HAVE BEEN CONSOLIDATED OR A NON-STANDARD UNIT HAS BEEN APPROVED BY THE DIVISION

<p>Diagram showing well location and acreage dedication plat. The diagram includes a grid with dimensions 1980' and 330'. A 'PRODUCING AREA' is indicated, along with a 'PROJECT AREA' defined by a grid. Key dimensions include 150', 330', 2308', and 2158.0'. The diagram also shows the 'S.L.' (Surface Location) and 'B.H.' (Bottom Hole Location) points.</p>	<p>GEODETIC COORDINATES NAD 27 NME</p> <p>SURFACE LOCATION Y=467439.6 N X=759473.9 E</p> <p>LAT.=32.282317° N LONG.=103.493737° W</p> <p>BOTTOM HOLE LOCATION Y=465282.2 N X=759493.8 E</p>	<p>OPERATOR CERTIFICATION</p> <p>I hereby certify that the information herein is true and complete to the best of my knowledge and belief, and that this organization either owns a working interest or unleased mineral interest in the land including the proposed bottom hole location or has a right to drill this well at this location pursuant to a contract with an owner of such mineral or working interest, or to a voluntary pooling agreement or a compulsory pooling order heretofore entered by the division.</p> <p>Signature: <i>Joe T. Janica</i> Date: 12/05/13</p> <p>Printed Name: Joe T. Janica</p> <p>E-mail Address: joejanica@valornet.com</p>
	<p>CORNER COORDINATES TABLE</p> <p>A - Y=467584.2 N, X=758813.0 E</p> <p>B - Y=467595.0 N, X=760132.9 E</p> <p>C - Y=464957.5 N, X=760159.4 E</p> <p>D - Y=464946.8 N, X=758838.4 E</p>	<p>SURVEYOR CERTIFICATION</p> <p>I hereby certify that the well location shown on this plat was plotted from field notes of actual surveys made by me or under my supervision, and that the same is true and correct to the best of my belief.</p> <p>OCTOBER 30, 2013</p> <p>Date of Survey</p> <p>Signature & Seal of Professional Surveyor:</p> <p><i>Ronald J. Eidson</i></p> <p>Certificate Number: 3239</p> <p>ACK REL W.O. 13.13.1403 JWSC W.O. 13.13.1417</p>

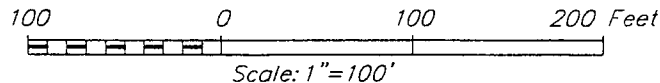
DEC 10 2013

PM



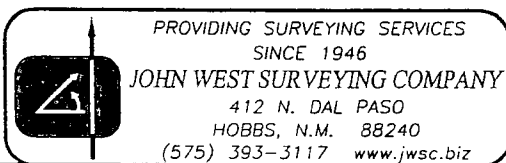
DIRECTIONS TO LOCATION

FROM THE INTERSECTION OF STATE HIGHWAY 128 (JAL HWY) AND CO. RD. E-21 (DELAWARE BASIN RD) GO NORTH APPROX. 5.1 MILES; TURN RIGHT AND GO EAST APPROX. 0.7 MILES TO THE INTERSECTION; CONTINUE EAST APPROX. 0.3 MILES TO THE WEST COPPERLINE 29 STATE COM #1H. LOCATION STAKE IS APPROX. 180 FEET NORTH TO THE WELL HEAD.



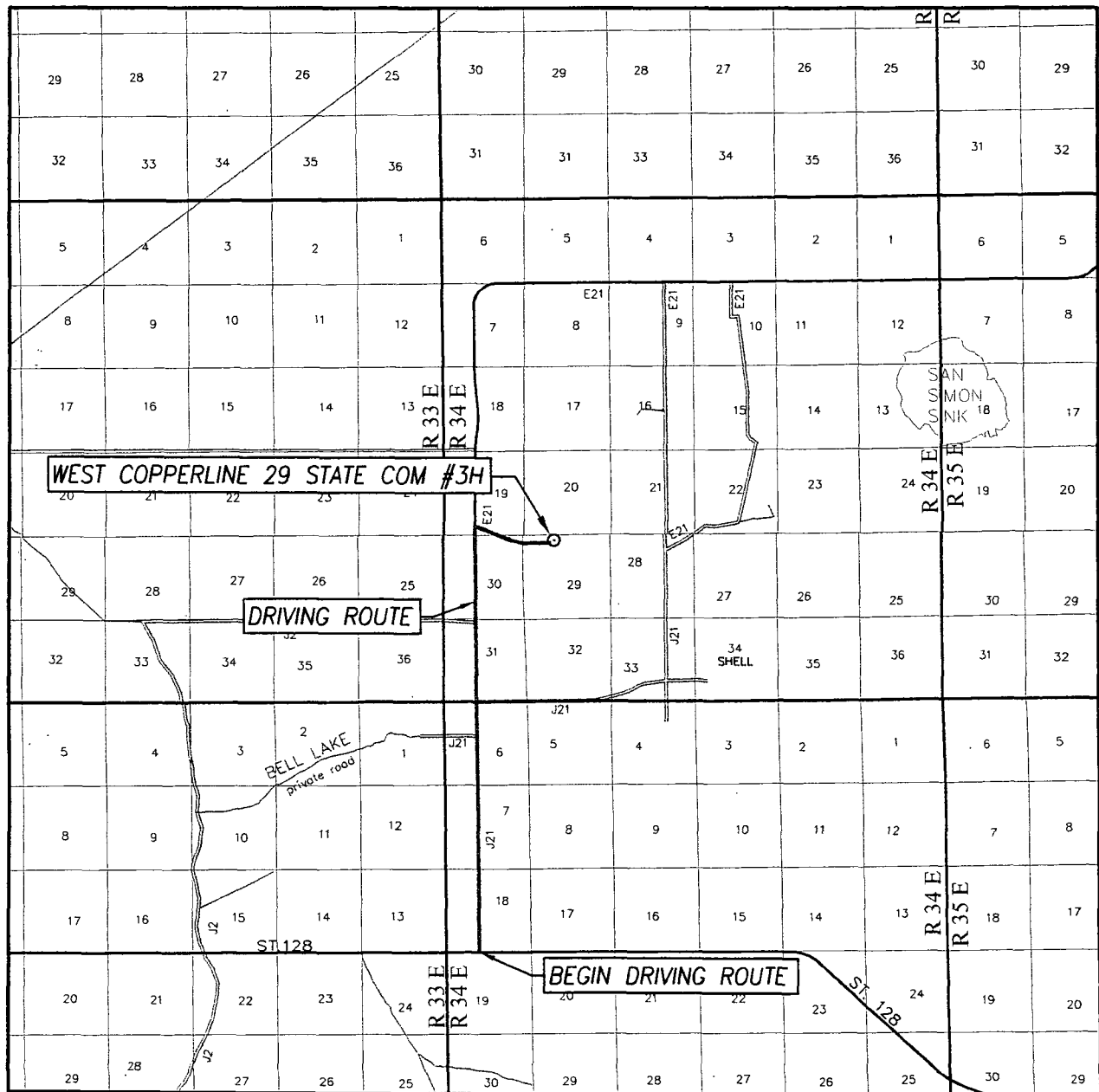
CAZA OPERATING, LLC

WEST COPPERLINE 29 STATE COM #3H WELL
LOCATED 150 FEET FROM THE NORTH LINE
AND 1980 FEET FROM THE WEST LINE OF SECTION 29,
TOWNSHIP 23 SOUTH, RANGE 34 EAST, N.M.P.M.,
LEA COUNTY, NEW MEXICO



Survey Date: 10/30/13	CAD Date: 11/5/13	Drawn By: BKL
W.O. No.: 13111103	Rev: .	Rel. W.O.: Sheet 1 of 1

VICINITY MAP



SCALE: 1" = 2 MILES

DRIVING ROUTE: SEE LOCATION MAP

SEC. 29 TWP. 23-S RGE. 34-E

SURVEY N.M.P.M.

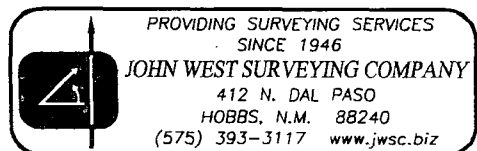
COUNTY LEA STATE NEW MEXICO

DESCRIPTION 150' FNL & 1980' FWL

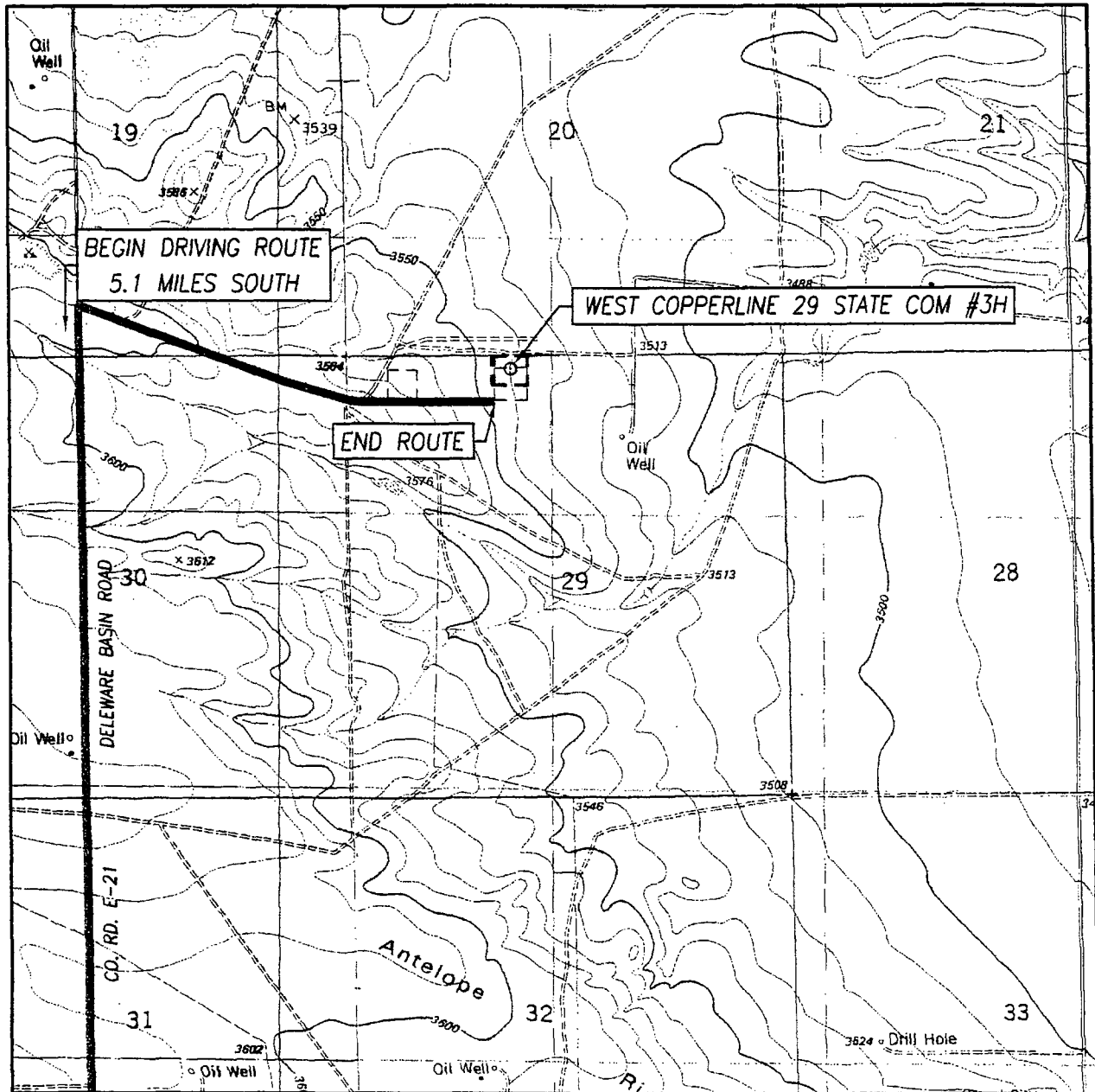
ELEVATION 3539'

OPERATOR CAZA OPERATING, LLC

LEASE WEST COPPERLINE 29 STATE COM



LOCATION VERIFICATION MAP



SCALE: 1" = 2000'

CONTOUR INTERVAL:
SAN SIMON SINK, N.M. - 10'

SEC. 29 TWP. 23-S RGE. 34-E

SURVEY N.M.P.M.

COUNTY LEA STATE NEW MEXICO

DESCRIPTION 150' FNL & 1980' FWL

ELEVATION 3539'

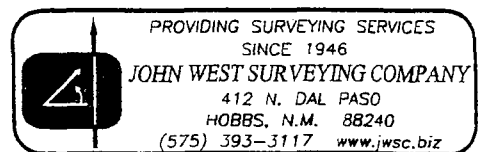
OPERATOR CAZA OPERATING, LLC

LEASE WEST COPPERLINE 29 STATE COM

U.S.G.S. TOPOGRAPHIC MAP
SAN SIMON SINK, N.M.

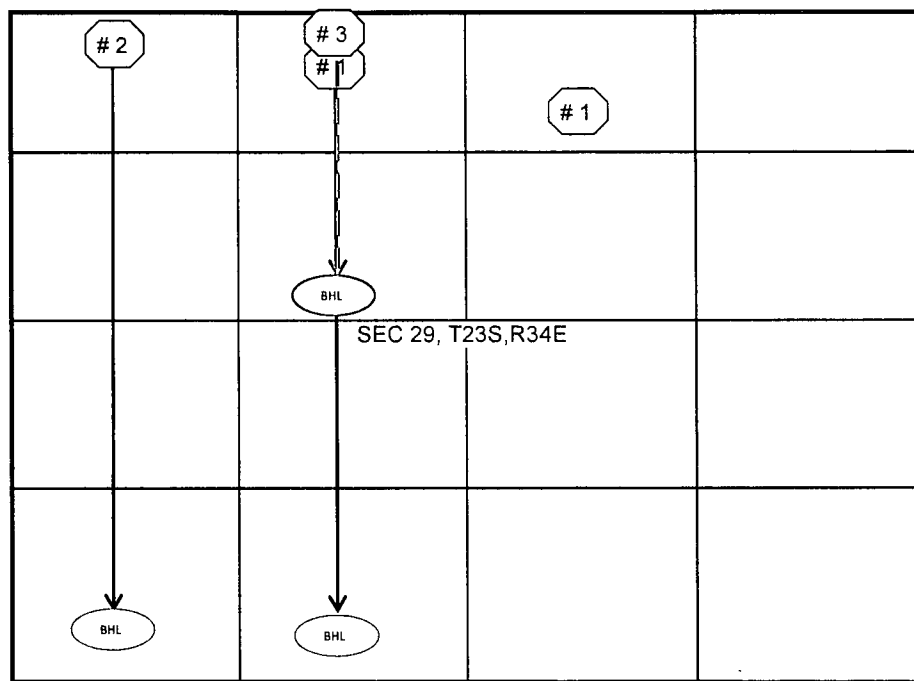
DIRECTIONS TO LOCATION

FROM THE INTERSECTION OF STATE HIGHWAY 128 (JAL HWY) AND CO. RD. E-21 (DELAWARE BASIN RD) GO NORTH APPROX. 5.1 MILES; TURN RIGHT AND GO EAST APPROX. 0.7 MILES TO THE INTERSECTION; CONTINUE EAST APPROX. 0.3 MILES TO THE WEST COPPERLINE 29 STATE COM #1H. LOCATION STAKE IS APPROX. 180 FEET NORTH TO THE WELL HEAD.



West Copperline 29 State #3H 3rd Bones Springs Horizontal

Sec 29, (NE/NW)_T-23-S, R-34-E, Lea County, New Mexico



Well Name	Surface Location	Depth and Strata	Target TD	Bottom Hole Location
W.Copperline 29 St # 3H	150 FNL & 1980 FWL	TD = 11,630 Wolfcamp Hrzs	13423 MD	2308 FNL & 1980 FWL ± 11,470 T
W.Copperline 29 St # 2H	330 FNL & 660 FWL	TD = 11,480 2nd Bone Sprgs Hrzs	15880 MD	330 FSL & 660 FWL ± 10,576 T
W.Copperline 29 St # 1H	330 FNL & 1980 FWL	TD = 11,480 3rd Bone Sprgs Hrzs	15880 MD	330 FSL & 1980 FWL ± 11,480 T
Antelbellum Unit #2	990 FNL & 1980 FEL	TD= 10860-9532' B. Sprgs Vert	14,318 Penn	Same