

District I
1625 N. French Dr., Hobbs, NM 88240
Phone: (575) 393-6161 Fax: (575) 393-0720
District II
811 S. First St., Artesia, NM 88210
Phone: (575) 748-1283 Fax: (575) 748-9720
District III
1000 Rio Brazos Road, Aztec, NM 87410
Phone: (505) 334-6178 Fax: (505) 334-6170
District IV
1220 S. St. Francis Dr., Santa Fe, NM 87505
Phone: (505) 476-3460 Fax: (505) 476-3462

State of New Mexico

Form C-101
Revised July 18, 2013

Energy Minerals and Natural Resources

Oil Conservation Division

1220 South St. Francis Dr.

Santa Fe, NM 87505

HOBBS OCD ☐ AMENDED REPORT

DEC 23 2013

APPLICATION FOR PERMIT TO DRILL, RE-ENTER, DEEPEN, PLUGBACK OR ADD A ZONE

1. Operator Name and Address VANGUARD PERMIAN LLC P O BOX 1570 281 NORTH NM HIHWAY 248 EUNICE, NM 88231		4. OGRID Number 258350
2. API Number 30-025-26457		6. Well No. 3
Property Code 301530 31240	5. Property Name GRIZZELL "B"	

7. Surface Location

UL - Lot	Section	Township	Range	Lot Idn	Feet from	N/S Line	Feet From	E/W Line	County
H	8	22S	37E		1830	NORTH	510	EAST	LEA

8. Proposed Bottom Hole Location

UL - Lot	Section	Township	Range	Lot Idn	Feet from	N/S Line	Feet From	E/W Line	County

9. Pool Information

Pool Name Eunice; San Andres, Southwest	Pool Code 24180
---	---------------------------

Additional Well Information

11. Work Type P	12. Well Type O	13. Cable/Rotary	14. Lease Type FEE	15. Ground Level Elevation 3425.4 GR
16. Multiple	17. Proposed Depth 4500	18. Formation SAN ANDRES	19. Contractor	20. Spud Date
Depth to Ground water		Distance from nearest fresh water well		Distance to nearest surface water

☐ We will be using a closed-loop system in lieu of lined pits

21. Proposed Casing and Cement Program

Type	Hole Size	Casing Size	Casing Weight/ft	Setting Depth	Sacks of Cement	Estimated TOC
	17 1/2	13 3/8	48#	1162	700 SX Class C	Circ 120 sx
	12 1/4	9 5/8	36#	3900	1185 sx Lite 300	Sx
	8 3/4	7	20, 23, 26#	7500	1250 sx Class H	TCMT 1840

Casing/Cement Program: Additional Comments

--

22. Proposed Blowout Prevention Program

Type	Working Pressure	Test Pressure	Manufacturer

23. I hereby certify that the information given above is true and complete to the best of my knowledge and belief.
I further certify that I have complied with 19.15.14.9 (A) NMAC ☐ and/or 19.15.14.9 (B) NMAC ☐ if applicable.
Signature: *Gaye Heard*

Printed name: **GAYE HEARD**

Title: **AGENT**

E-mail Address: **gheard@oilreportsinc.com**

Date: **12-19-13**

Phone: **575-393-2727**

OIL CONSERVATION DIVISION

Approved By:

Title: **Petroleum Engineer**

Approved Date: **12/26/13**

Expiration Date: **12/26/15**

Conditions of Approval Attached

DEC 30 2013

VANGUARD PERMIAN LLC

GRIZZELL "B" #3

H 8 T.22S R37E API# 30-025-26457

1. MIRU completion rig and test anchors.
2. Unseat pump and POOH w/ rods and pump.
3. ND WH and NU BOP. Kill well with 2% KCL water, if necessary. Release TAC and POOH w/ tubing.
4. PU, strap and TIH with 6" bit, 7" casing scraper & 2-7/8" tubing. Clean out hole to ~4500' until clean returns, POOH.
5. MIRU wireline.
6. MU a 7" CIBP and RIH to ~4500', set same
7. MU 3-1/8" casing guns and perforate as follows:
 - a. 4066' – 4082', (16', 1 spf, 120°, 16 holes)
 - b. 3994' – 4054', (60', 1 spf, 120°, 60 holes)
8. RD wireline.
9. PU a 7" packer and RIH with 2-7/8" tubing.
10. Set packer at 3985' and test to 500 psi.
11. MIRU pump truck (with 4500 gals acid) and test lines to 2500 psi.
 - a. Pump 3000 gals 15% NEFE acid with 60 ball sealers.
 - b. Pump 1000 gal then drop 20 balls.
 - c. Pump last 500 gals and flush to 4082'.
 - d. Record ISIP, 5 min, 10 min and 30 min.
12. SI for 1 hr then RU swabber and swab well in to test acid job. Recover load and report fluid/gas entry.
13. Release packer and POOH.
14. MIRU wireline
15. MU 3-1/8" casing guns and perforate as follows:
 - a. 3926' – 3942', (16', 1 spf, 120°, 16 holes)
 - b. 3910' – 3920', (10', 1 spf, 120°, 10 holes)
 - c. 3820' – 3870', (50', 1 spf, 120°, 50 holes) – Guns need to penetrate 7" casing and 9-5/8" casing
16. RD wireline
17. PU a RBP and RIH with both RBP and packer on 2-7/8" tubing.
18. Set RBP @ 3950', pull back up and set packer at 3810'.
19. MIRU pump truck (with 4500 gals acid) and test lines to 3500 psi.
 - a. Pump 2000 gals 15% NEFE acid with 3000 lbs rock salt.
 - b. Pump another 1000 gals acid with 2000 lbs rock salt.
 - c. Pump 1000 gal acid and 1000 lbs rock salt.
 - d. Pump last 500 gals and flush to 5636'.
 - e. Record ISIP, 5 min, 10 min and 30 min.
20. SI 1 hr. then RU swabber and swab well in to test acid job. Recover load and report fluid/gas entry.
21. Release packer and retrieve RBP, POOH laying out RBP and Packer.
22. RIH w/ 7" TAC, SN and 2-7/8" tubing. Contact Mike Jones for SN setting depth.
23. RIH w/ rods and pump.
24. RD & MO.
25. Turn well on to production.



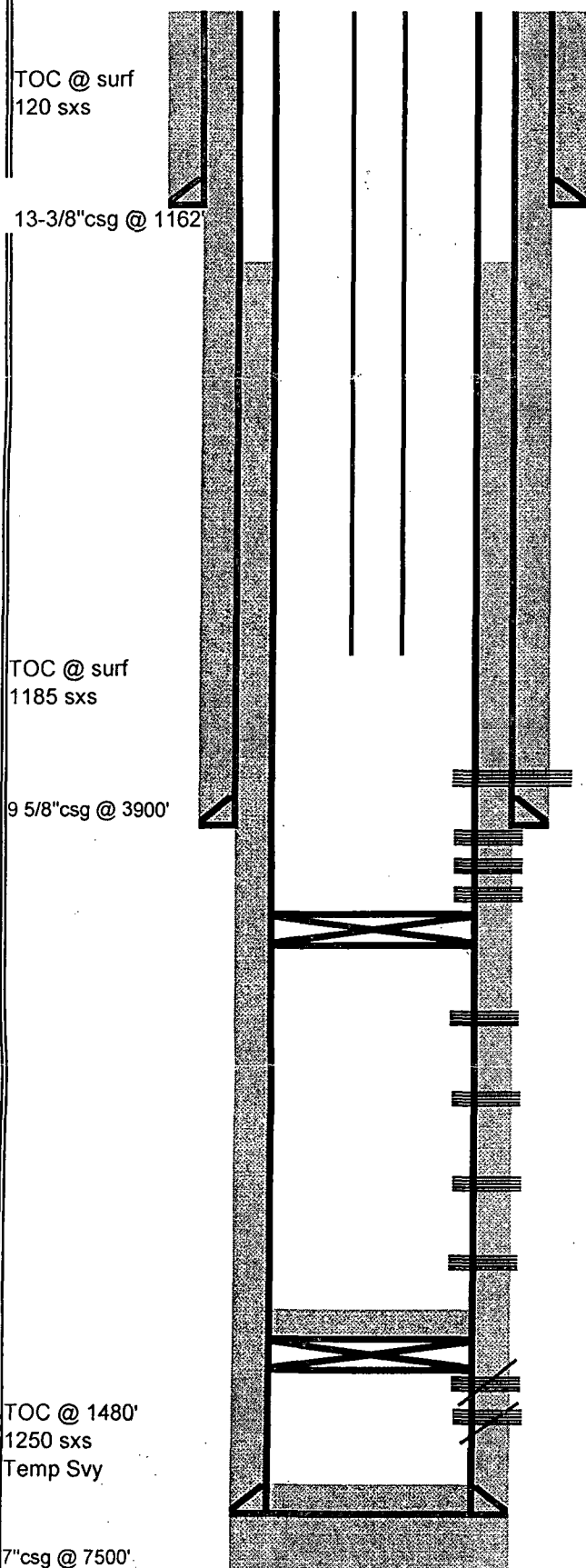
VANGUARD
PERMIAN, LLC

Grizzell B #3

Blinbry/Drnk/W.Abo/Pdk - 30-025-26457

Lea County, New Mexico

PROPOSED COMPLETION - 12/2013



CASING PROGRAM

Depth	Size	Weight	Grade	I.D.	Collapse	Burst
1162'	13-3/8"	48#	H-40	12.715	770	1730
3900'	9 5/8"	36#	K-55	8.912	2,020	3,520
7500'	7"	20,#23#,26#	K-55	6.276	2,270	3,740

PRODUCTION TUBING

Depth	Size	Weight	Grade	Threads
	2 7/8"	6.5#	J-55	EUE

San Andres Perforations:

3820' - 3870'
3910' - 3920'
3926' - 3942'
3994' - 4054'
4066' - 4082'

PROPOSED
PROPOSED
PROPOSED
PROPOSED
PROPOSED

CIBP @ 4500'

Paddock Perforations:

5,106' - 5,200'

Blinbry Perforations:

5,495' - 5,910'

Drinkard Perforations:

6,423' - 6,496'

Wantz Abo Perforations:

6,782' - 7,004'

CIBP @ 7065', capped w/ 10' cmt

Fusselman Perforations:

7,081' - 7,086'
7,124' - 7,184'

PBTD = 7,465'

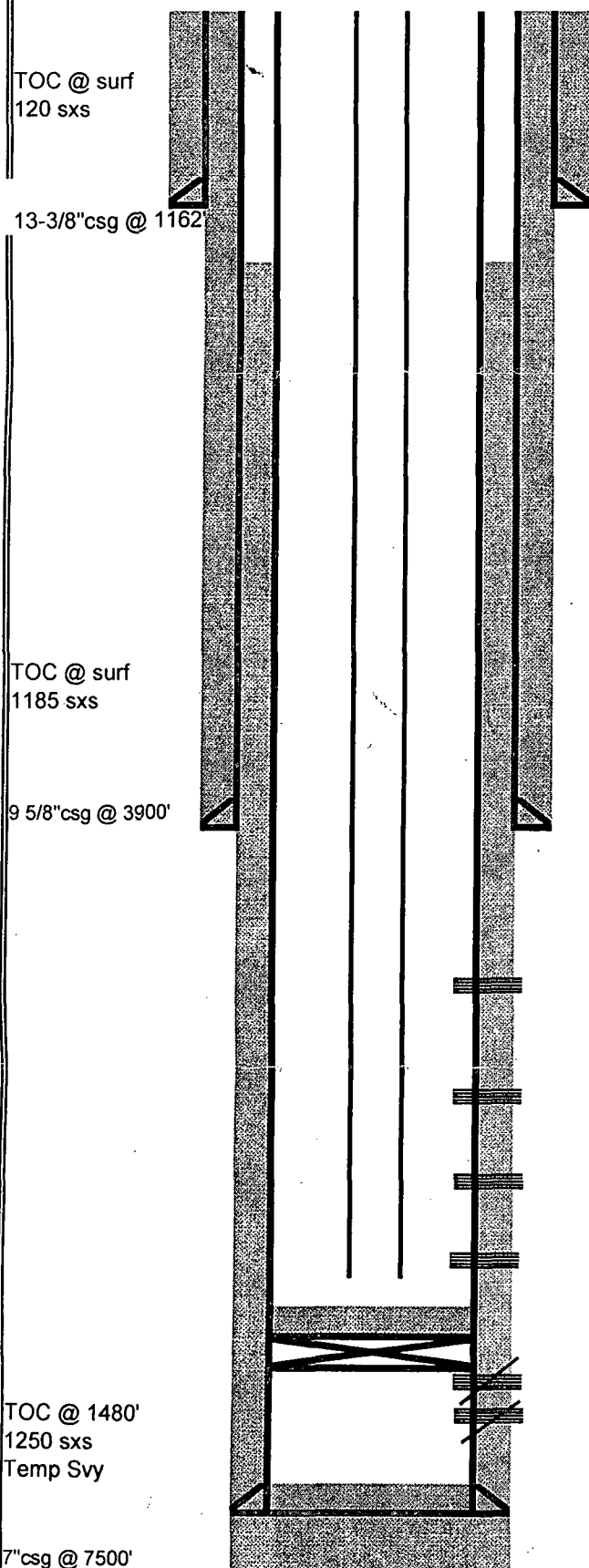
Note: This schematic is not to scale. For display purposes only.



VANGUARD
PERMIAN, LLC

Grizzell B #3
Blinbry/Drnk/W.Abo/Pdk - 30-025-26457

Lea County, New Mexico
CURRENT COMPLETION - 12/2013



CASING PROGRAM

Depth	Size	Weight	Grade	I.D.	Collapse	Burst
1162'	13-3/8"	48#	H-40	12.715	770	1730
3900'	9 5/8"	36#	K-55	8.912	2,020	3,520
7500'	7"	20,#23#,26#	K-55	6.276	2,270	3,740

PRODUCTION TUBING

Depth	Size	Weight	Grade	Threads
6800.00	2 7/8"	6.5#	J-55	EUE

Note: This schematic is not to scale. For display purposes only.