

DISTRICT I
1625 N. French Dr., Hobbs, NM 88240
Phone: (575) 393-6161 Fax: (575) 393-0720
DISTRICT II
811 S. First St., Artesia, NM 88210
Phone: (575) 748-1283 Fax: (575) 748-9720
DISTRICT III
1000 Rio Brazos Rd., Aztec, NM 87410
Phone: (505) 334-6178 Fax: (505) 334-6170
DISTRICT IV
1220 S. St. Francis Dr., Santa Fe, NM 87505
Phone: (505) 476-3460 Fax: (505) 476-3462

State of New Mexico
Energy, Minerals & Natural Resources Department
OIL CONSERVATION DIVISION
1220 South St. Francis Dr.
Santa Fe, New Mexico 87505

HOBBS OGD

Form C-102

Revised August 1, 2011

Submit one copy to appropriate

District Office

DEC 26 2013

☐ AMENDED REPORT

RECEIVED

WELL LOCATION AND ACREAGE DEDICATION PLAT

API Number 30-025-41575	Pool Code 37570	Pool Name LEA BONE SPRING
Property Code 40302	Property Name MARATHON ROAD 15 PA FEDERAL	Well Number 1H
OGRID No. 14744	Operator Name MEWBOURNE OIL COMPANY	Elevation 3652'

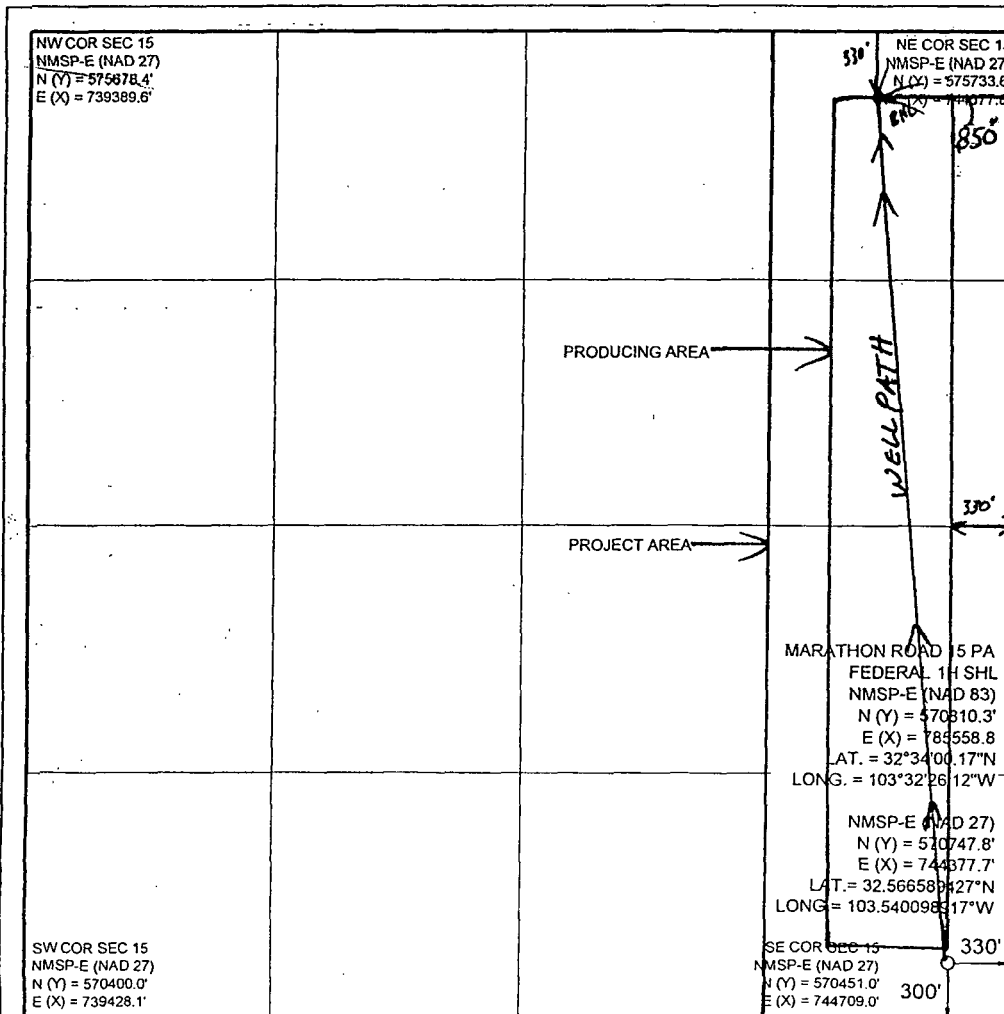
Surface Location

UL or lot no.	Section	Township	Range	Lot Idn	Feet from the	North/South line	Feet from the	East/West line	County
P	15	20 S	34 E		300	SOUTH	330	EAST	LEA

Bottom Hole Location If Different From Surface

UL or lot no.	Section	Township	Range	Lot Idn	Feet from the	North/South line	Feet from the	East/West line	County
A	15	20 S	34 E		330	NORTH	850'	EAST	LEA
Dedicated Acres 160	Joint or Infill	Consolidated Code	Order No.						

No allowable will be assigned to this completion until all interests have been consolidated or a non-standard unit has been approved by the division.



OPERATOR CERTIFICATION

I hereby certify that the information contained herein is true and complete to the best of my knowledge and belief, and that this organization either owns a working interest or unleased mineral interest in the land including the proposed bottom hole location or has a right to drill this well at this location pursuant to a contract with an owner of such a mineral or working interest, or to voluntary pooling agreement or a compulsory pooling order heretofore entered by the division.

Signature **Brady Bishop** Date **7-2-13**

Print Name **BRADLEY BISHOP**

E-mail Address

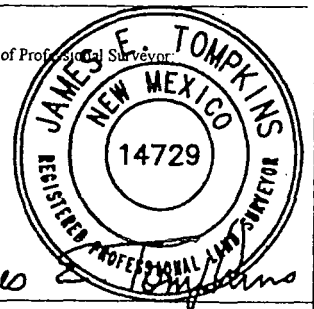
SURVEYORS CERTIFICATION

I hereby certify that the well location shown on this plat was plotted from field notes of actual surveys made by me or under my supervision, and that the same is true and correct to the best of my belief.

June 4, 2013

Date of Survey

Signature and Seal of Professional Surveyor



Job No. **WTC48972**

JAMES E. TOMPKINS 14729

Certificate Number

DEC 30 2013