

District I
1625 N. French Dr., Hobbs, NM 88240
Phone: (575) 393-6161 Fax: (575) 393-9720
District II
811 S. First St., Artesia, NM 88210
Phone: (575) 748-1283 Fax: (575) 748-9720
District III
1000 Rio Brazos Road, Aztec, NM 87410
Phone: (505) 334-6178 Fax: (505) 334-6170
District IV
1220 S. St. Francis Dr., Santa Fe, NM 87505
Phone: (505) 476-3460 Fax: (505) 476-3462

HOBBS OCD

State of New Mexico
Energy, Minerals & Natural Resources Department
DEC 27 2013 OIL CONSERVATION DIVISION
1220 South St. Francis Dr.
Santa Fe, NM 87505
RECEIVED

Form C-102
Revised August 1, 2011
Submit one copy to appropriate
District Office

☐ AMENDED REPORT

WELL LOCATION AND ACREAGE DEDICATION PLAT

API Number 30-025-41578		Pool Code 31920	Pool Name HOBBS; GRAYBURG-SAN ANDRES
Property Code 19520	Property Name NORTH HOBBS G/SA UNIT		Well Number 948
OGRID No. 157984	Operator Name OCCIDENTAL PERMIAN LTD.		Elevation 3641.9'

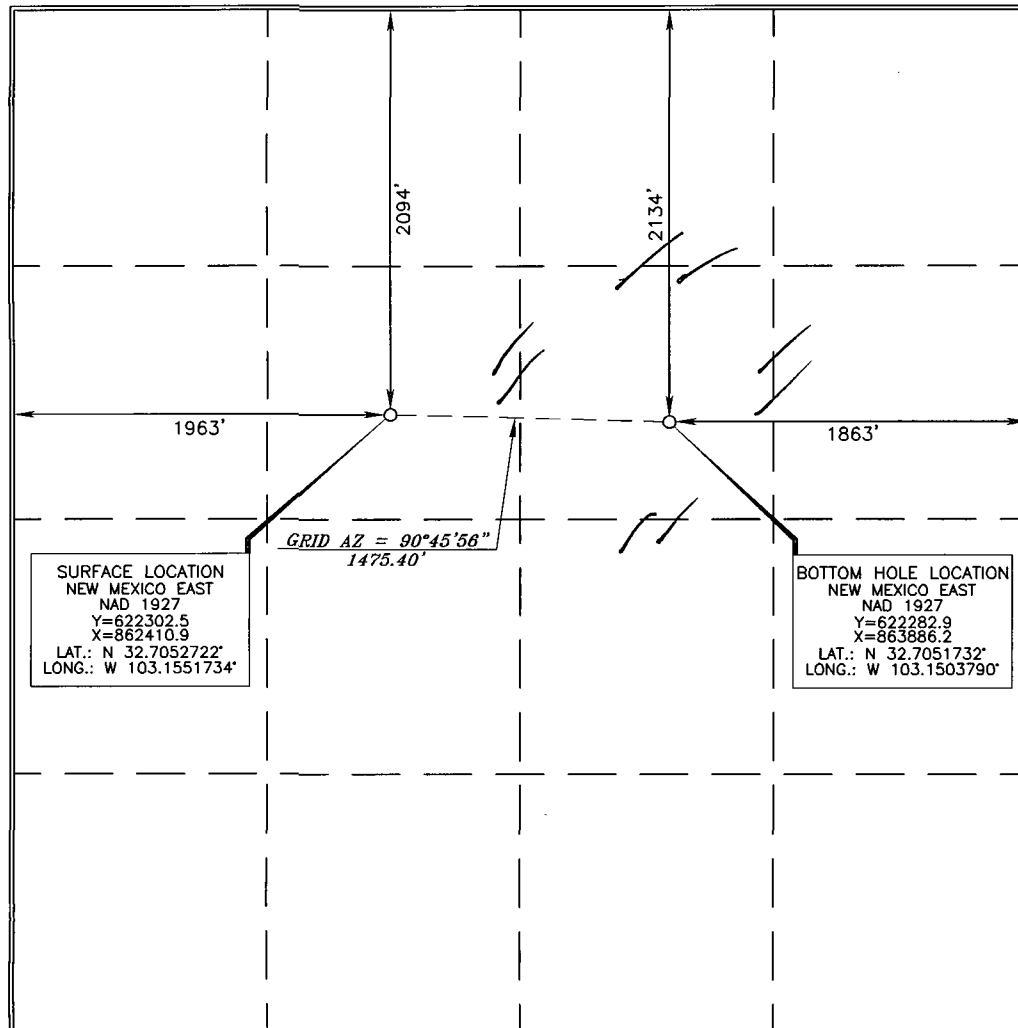
Surface Location

UL or lot no.	Section	Township	Range	Lot Idn	Feet from the	North/South line	Feet from the	East/West line	County
F	33	18 SOUTH	38 EAST, N.M.P.M.		2094'	NORTH	1963'	WEST	LEA

Bottom Hole Location If Different From Surface

UL or lot no.	Section	Township	Range	Lot Idn	Feet from the	North/South line	Feet from the	East/West line	County
G	33	18 SOUTH	38 EAST, N.M.P.M.		2134'	NORTH	1863'	EAST	LEA
Dedicated Acres 40		Joint or Infill I	Consolidation Code	Order No.					

No allowable will be assigned to this completion until all interests have been consolidated or a non-standard unit has been approved by the division.



OPERATOR CERTIFICATION

I hereby certify that the information contained herein is true and complete to the best of my knowledge and belief, and that this organization either owns a working interest or unleased mineral interest in the land including the proposed bottom hole location or has a right to drill this well at this location pursuant to a contract with an owner of such a mineral or working interest, or to a voluntary pooling agreement or a compulsory pooling order heretofore entered by the division.

Mark Stephens 12/26/13
Signature Date

Mark Stephens
Printed Name
Mark Stephens@oxy.com
E-mail Address

SURVEYOR CERTIFICATION

I hereby certify that the well location shown on this plat was plotted from notes of actual surveys made by me or under my supervision, and that the same is true and correct to the best of my belief.

JOSEPH J. JASE
15079
OCTOBER 15, 2013
Date of Survey
Signature and Seal of Professional Surveyor

Joseph J. Jase 11/27/2013
Certificate Number 15079

WO# 131119WL-a (KA)

DEC 31 2013