

DISTRICT I
1625 N. FRENCH DR., HOBBBS, NM 88240
Phone: (505) 353-6181 Fax: (505) 353-0720

DISTRICT II
1501 W. GRAND AVENUE, ARTESIA, NM 88210
Phone: (505) 746-1823 Fax: (505) 746-0720

DISTRICT III
1000 RIO BRAZOS RD., AZTEC, NM 87410
Phone: (505) 334-6176 Fax: (505) 334-6170

DISTRICT IV
11885 S. ST. FRANCIS DR., SANTA FE, NM 87505
Phone: (505) 476-3460 Fax: (505) 476-3462

State of New Mexico
Energy, Minerals & Natural Resources Department
OIL CONSERVATION DIVISION
11885 SOUTH ST. FRANCIS DR.
Santa Fe, New Mexico 87505

Form C-102
Revised August 1, 2011
Submit one copy to appropriate

☐ AMENDED REPORT

WELL LOCATION AND ACREAGE DEDICATION PLAT

API Number 30-025-40954	Pool Code 97895	Pool Name Wildcat G-08 S213304D; Bone Spring
Property Code 38601	Property Name CORAZON STATE UNIT	Well Number 12H
GRID No. 229137	Operator Name COG OPERATING, LLC	Elevation 3801.0

Surface Location

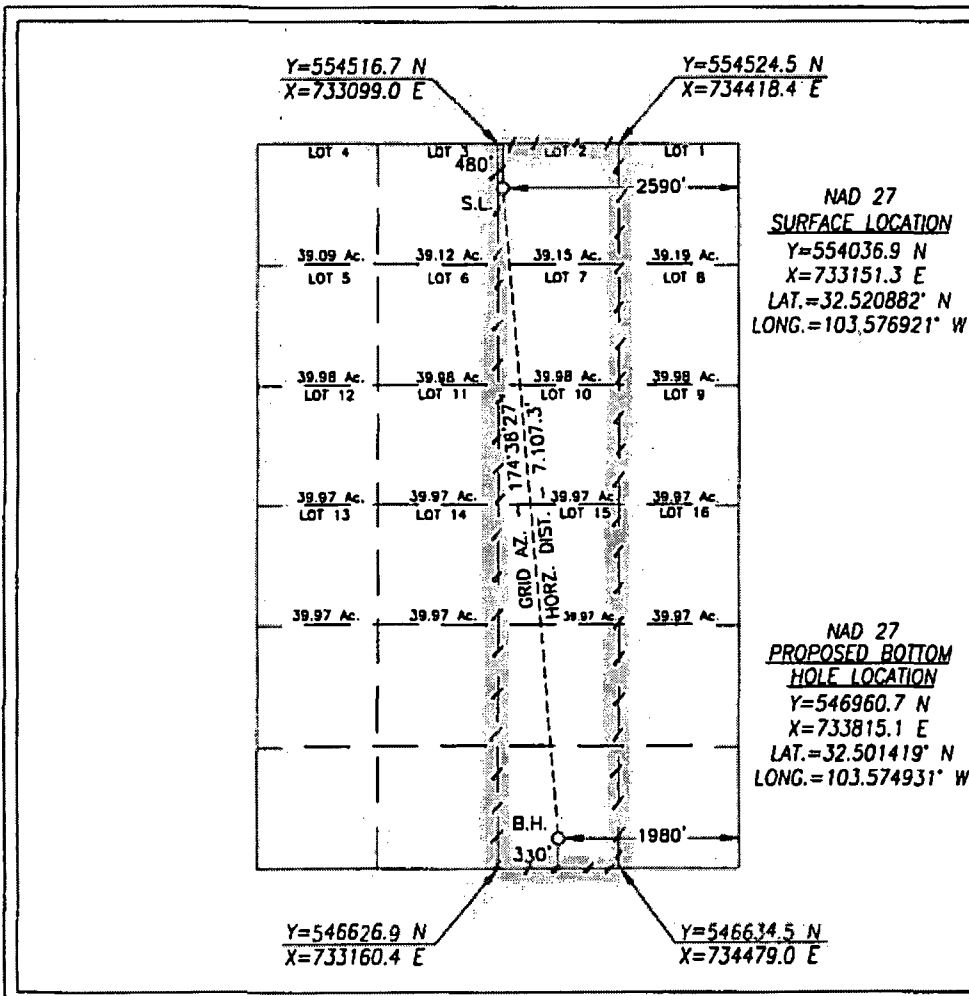
UL or lot No.	Section	Township	Range	Lot Idn	Feet from the	North/South line	Feet from the	East/West line	County
2	4	21-S	33-E		480	NORTH	2590	EAST	LEA

Bottom Hole Location If Different From Surface

UL or lot No.	Section	Township	Range	Lot Idn	Feet from the	North/South line	Feet from the	East/West line	County
0	4	21-S	33-E		330	SOUTH	1980	EAST	LEA

Dedicated Acres 239.07	Joint or Infill	Consolidation Code	Order No.
----------------------------------	-----------------	--------------------	-----------

NO ALLOWABLE WILL BE ASSIGNED TO THIS COMPLETION UNTIL ALL INTERESTS HAVE BEEN CONSOLIDATED
OR A NON-STANDARD UNIT HAS BEEN APPROVED BY THE DIVISION



OPERATOR CERTIFICATION

I hereby certify that the information herein is true and complete to the best of my knowledge and belief, and that this organization either owns a working interest or unleased mineral interest in the land including the proposed bottom hole location or has a right to drill this well at this location pursuant to a contract with an owner of such mineral or working interest, or to a voluntary pooling agreement or a compulsory pooling order heretofore entered by the division.

Melanie J. Parker 1/7/14
Signature Date

Melanie J. Parker

Printed Name

mparker@concho.com

E-mail Address

SURVEYOR CERTIFICATION

I hereby certify that the well location shown on this plat was plotted from field notes of actual surveys made by me or under my supervision, and that the same is true and correct to the best of my belief.

JULY 29, 2013

Date of Survey

Signature & Seal of Professional Surveyor



Chad Hargrow 8/17/13
Certificate No. CHAD HARGROW 17777
W.O. # 13-488 DRAWN BY: TL

JAN 13 2014