

District I
1625 N. French Dr., Hobbs, NM 88240
Phone: (575) 393-6161 Fax: (575) 393-0720
District II
811 S. First St., Artesia, NM 88210
Phone: (575) 748-1283 Fax: (575) 748-9720
District III
1000 Rio Brazos Road, Aztec, NM 87410
Phone: (505) 334-6178 Fax: (505) 334-6170
District IV
1220 S. St. Francis Dr., Santa Fe, NM 87505
Phone: (505) 476-3460 Fax: (505) 476-3462

State of New Mexico
HOBBES OGD Energy Minerals and Natural Resources
Oil Conservation Division
1220 South St. Francis Dr.
Santa Fe, NM 87505

Form C-101
Revised July 18, 2013

JAN 13 2014

☐ AMENDED REPORT

RECEIVED

APPLICATION FOR PERMIT TO DRILL, RE-ENTER, DEEPEN, PLUGBACK, OR ADD A ZONE

¹ Operator Name and Address CHEVRON USA INC. PO BOX 190 HOBBS, NM 88241		² OGRID Number 4323
⁴ Property Code 29908		⁵ API Number 30-025-32499
³ Property Name B F HARRISON B		⁶ Well No. 25

7. Surface Location

UL - Lot	Section	Township	Range	Lot Idn	Feet from	N/S Line	Feet From	E/W Line	County
C	9	23S	37E		825	NORTH	1980	WEST	LEA

8. Proposed Bottom Hole Location

UL - Lot	Section	Township	Range	Lot Idn	Feet from	N/S Line	Feet From	E/W Line	County

9. Pool Information

Pool Name TEAGUE;GLORIETTA -UPPER PADDOCK, SW	Pool Code 58595
--	--------------------

Additional Well Information

¹¹ Work Type R	¹² Well Type GAS	¹³ Cable/Rotary R	¹⁴ Lease Type PRIVATE	¹⁵ Ground Level Elevation 3313'
¹⁶ Multiple NO	¹⁷ Proposed Depth 5485	¹⁸ Formation GLORIETTA	¹⁹ Contractor	²⁰ Spud Date
Depth to Ground water		Distance from nearest fresh water well		Distance to nearest surface water

☒ We will be using a closed-loop system in lieu of lined pits

21. Proposed Casing and Cement Program

Type	Hole Size	Casing Size	Casing Weight/ft	Setting Depth	Sacks of Cement	Estimated TOC
SURF	12.25	9.625	36#	1180	650	
PROD	8.75	7.00	26#	7150	3400	

Casing/Cement Program: Additional Comments

--

22. Proposed Blowout Prevention Program

Type	Working Pressure	Test Pressure	Manufacturer
DOUBLE RAM	3000	3000	

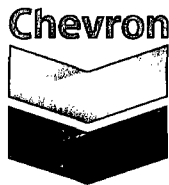
²³ I hereby certify that the information given above is true and complete to the best of my knowledge and belief. I further certify that I have complied with 19.15.14.9 (A) NMAC <input checked="" type="checkbox"/> and/or 19.15.14.9 (B) NMAC <input type="checkbox"/> , if applicable. Signature: <i>Cindy Herrera-Murillo</i> Printed name: CINDY HERRERA-MURILLO Title: PERMITTING SPECIALIST E-mail Address: Cherreramurillo@chevron.com Date: 01/13/2014	<div style="text-align: center;">OIL CONSERVATION DIVISION</div> Approved By: <i>[Signature]</i> Title: Petroleum Engineer Approved Date: <i>01/14/14</i> Expiration Date: <i>01/14/16</i> Conditions of Approval Attached
JAN 14 2014	

Additional Comments:

CHEVRON U.S.A. INC. INTENDS TO COMPLETE UPHOLE POTENTIAL (GLORETIA FORMATION) BY ABANDONING THE LOWER BLINEBRY AND TUBB FORMATION.

VERBAL APPROVAL WAS GIVEN BY MR. MAXEY G. BROWN (COMPLIANCE OFFICER) TO ABANDON THE LOWER SECTION BY SETTING THE 1ST CIBP BETWEEN BLINEBRY & TUBB FORMATION (@+/- 6,000) AND MAINTAIN 35' OF CMT ABOVE THE CIBP AND SETTING THE 2ND CIBP BETWEEN BLINEBRY & TUBB FORMATION (@+/- 5,200) AND MAINTAIN 35' OF CMT ABOVE THE CIBP. ONCE THE PLUG AND ABANDON JOB IS FINISHED, CHEVRON WILL RESUME WITH THE UPHOLE GLORIETA RECOMPLETION JOB.

PLEASE FIND ATTACHED, THE INTENDED PROCEDURE TO BE USED.



Workover/ Completion Program

Date: 12/10/2013

Well: BF Harrison #25
Reservoir/Field: Reservoir: Blinebry and Tubb/ Field - North Teague
Surface Location: C-09-23S-37E 825 FNL 1980 FWL
GPS (NAD27) – (Long, Lat): N 32° 19' 24.996", W -103° 10' 9.876" (NAD27)
API No: 30-025-32499
Cost Center: UCU820500
Chevron Ref. No.: QU2057
WBS #: UWDDDB-A4001

Job: Plug and abandon lower zone.

*** Supplemental Procedure to plug and abandon lower zone ***

*This procedure is meant to be followed. It is up to the WSM, Remedial Engineer and Production Engineer to make the decisions necessary to do SAFELY what is best for the well. In the extent that this procedure does not reflect actual operations, please contact RE, PE and Superintendent for possible MOC.

It should be noted, the anticipated maximum amount of H₂S that an individual could be exposed to on location is as follows for given Radius of Exposure:

100 PPM ROE = $0.001589 \times 4100 \text{ PPM} \times 102 \text{ MCF} \wedge 0.6258 = 58 \text{ FEET}$

500 PPM ROE = $0.0004546 \times 4100 \text{ PPM} \times 102 \text{ MCF} \wedge 0.6258 = 27 \text{ FEET}$

CURRENT HOLE CONDITION:

Total Depth: 7,150' Fish Depth: 5485' (Top of Fish) GL: 3,313' KB: 0'

Casing Record:

9 ⁵/₈", 36# J-55, STC Casing set @ 1180' w/650 sx cmt. TOC-Surface (Circ 196 sx)

7", 26# J-55 (90 Jts.), 26# L-80 (39 Jts.) and 23# J-55 (43 Jts.), LTC Csg. set @ 7150' w/3400 sx cement. TOC - Surface, Circ 1082 sx

Existing Perforations:

Blinebry Perf: 5,589'-5,841'

Tubb Perfs: 6084-6086, 6090-6093, 6096-6098, 6103-6112, 6124-6126, 6131-6134, 6138-6148, 6154-6157, 6160-6173, 6179-6185, 6188-6191, 6195-6198, 6200-6203, 6206-6215, 6225-6227, 6229-6234 (156 hole, 2 JSPF)

REGULATORY REQUIREMENTS:

Submit C-103 Notice of Intent & Subsequent Reports (to be done by engineering staff)

Prepared by: Prasanna K Chandran (01/09/14)

Reviewed by: Jay Stockton (01/09/14)

Procedure: WBS #UWDDDB-A4001

1. Current the well has 41 ft of fish (tubing, seat nipple and TAC).
2. Tag the top of fish at 5,485' to verify depth. Perform the remaining fishing operation as per chevron guidelines.
3. TOH.
4. PU 5 ½" 1st CIBP and RIH. Set CIBP at ~6,000'. PU and tag CIBP to verify it set on depth.
 - a. Dump bail 35' of cement on top of CIBP. Allow time for cement to cure (~4 hrs).
 - b. PU 5 ½" packer on 2 7/8" workstring. TIH and tag TOC to verify 35' column of cement on CR (TOH with workstring and dump bail additional cement as needed to reach 40' mark).
 - c. Set packer at ~5,900'. Pressure test CMT/CR to 250/500 psi to confirm lower zone is plugged. Release packer and TOH.
5. PU 5 ½" 2nd CIBP and RIH. Set CIBP at ~5,200'. PU and tag CIBP to verify it set on depth.
 - d. Dump bail 35' of cement on top of CIBP. Allow time for cement to cure (~4 hrs.).
 - e. PU 5 ½" packer on 2 7/8" workstring. TIH and tag TOC to verify 40' column of cement on CR (TOH with workstring and dump bail additional cement as needed to reach 40' mark).

Set packer at ~5,150'. Pressure test CMT/CR to 250/500 psi to confirm lower zone is plugged. Release packer and TOH.

Resume with uphole Glorieta recompletion job. From this point onwards all the charges should be charged to the **WBS# UWDDDB-R4000.**

CHEVRON - North Teague Field

FIELD: North Teague

LOCATION: 825' FNL 1980' FWL

TOWNSHIP: 23S

SEC: 9

RANGE: 37E

COUNTY: Lea

LOT: C

STATE: NM

WELL NAME: B. F. Harrison 'B' #25

FORMATIONS: Blinebry & Tubb

OPERATOR: CHEVRON

API No. 30-025-32499

REFNO: QU2057

P & A Blinebry & Tubb and move uphole to complete Glorieta

GE: 3313' **KB:** 3325' **DF:** _____

Spud Date: 5/22/1994

Completion Date: 6/26/1994

Initial Formation: Tubb

Completion Data:

Hole 12-1/4"
OD 9-5/8" J-55, STC Casing
Wt. 36#
Set @ 1180'
w/ 650 sx cmt
TOC SURFACE (196 sx)

Jul-94 Perf Tubb formation w/2 JHPF as follows:

6084-86', 6090-93', 6096-98', 6103-12', 6124-26',
6131-34', 6138-48', 6154-57', 6160-73', 6179-85',
6188-91', 6195-98', 6200-03', 6206-15', 6225-27',
and 6229-34' (156 holes). **Acdz** w/4000 gal 15% HCL.
Frac w/58,000 gal XLG and 203,000# 16/30 sand.
IP: Flwd 4156 MCFD, 8.5 BO, 0 BW. (7/5/94)

Subsequent Workovers/Reconditioning/Repairs:

Sep-99 Acid wash Tubb perms f/ 6084-6234' w/3500 gal 15%

NEFE HCL. **Perf** Blinebry as follows: 5590-94',
5670-74', 5692-94', 5711-17', 5747', 5754-56', 5804-06',
5822-24' and 5838-40'. **Set RBP @ 5985'.**

Acdz Blinebry perms f/ 5590-5840' w/4000 gal 15%

NEFE acid. **Frac** Blinebry perms f/5590-5840'

w/13,985 gal YF-135 D pad and 80,000# 16/30 sand.

Re-perf Blinebry as follows: 5589', 5591', 5593',

5595', 5669', 5671', 5673', 5675', 5691', 5693', 5695',

5710', 5712', 5716', 5718', 5746', 5748', 5753', 5755',

5757', 5803', 5805', 5807', 5821', 5823', 5825', 5837',

5839' and 5841'. **Acdz** Blinebry perms f/ 5589-5841'

w/3500 gal 15% NEFE HCL. **Mini-frac** w/10,000 gal

40# X-Link gel. **Frac** Blinebry perms f/ 5589-5841'

w/44,000 gal 40# X-Link gel, 45,000# 16/30 sand,

and 55,000# 16/30 resin-coated sand.

9/28/99 - 24 OPT: Flwd 100 BO, 145 BW & 1149

MCF (Blinebry 5589-5841').

4/27/2002 Rel RBP & DHC Blinebry & Tubb pools.

DHC Order # 0021

Proposed Perfs

5030-5066

Glorieta

35' of cement

CIBP @ 5200'

Existing Perfs

5589-5841'

Status

Blinebry - open

35' of cement

CIBP @ 6000'

Existing Perfs

6084-6234'

Status

Tubb - Open

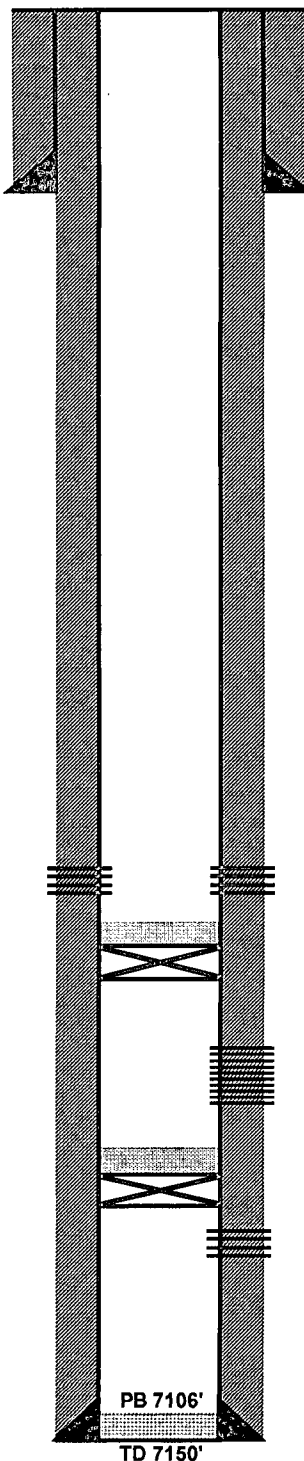
Hole 8-3/4"

OD 7" 26# J-55 (90 Jts.), 26# L-80 (39 Jts.) and 23# J-55 (43 Jts.), LTC Csg.

Set @ 7150'

w/ 3400 sx cmt

TOC Surface (1082 sx)



Additional Remarks or Information:

Updated: Prasanna Chandran 01-10-2013