

DISTRICT I
1625 N. French Dr., Hobbs, NM 88240

DISTRICT II
1301 W. Grand Avenue, Artesia, NM 88210

DISTRICT III
1000 Rio Brazos Rd., Aztec, NM 87410

DISTRICT IV
1220 S. St. Francis Dr., Santa Fe, NM 87505

State of New Mexico
Energy, Minerals and Natural Resources Department

Form C-102
Revised July 16, 2010

Submit one copy to appropriate
District Office

HOBBS OCD

JAN 24 2014

OIL CONSERVATION DIVISION

1220 South St. Francis Dr.
Santa Fe, New Mexico 87505

RECEIVED

WELL LOCATION AND ACREAGE DEDICATION PLAT

☐ AMENDED REPORT

API Number 30-025- 41628	Pool Code 97838	Well Name Jennings Hopper Bone Spring Wildcat Shale
Property Code 39100	Property Name HALLERTAU 4 FEDERAL	Well Number 6H
GRID No. 162683	Operator Name CIMAREX ENERGY CO. OF COLORADO	Elevation 3307'

Surface Location

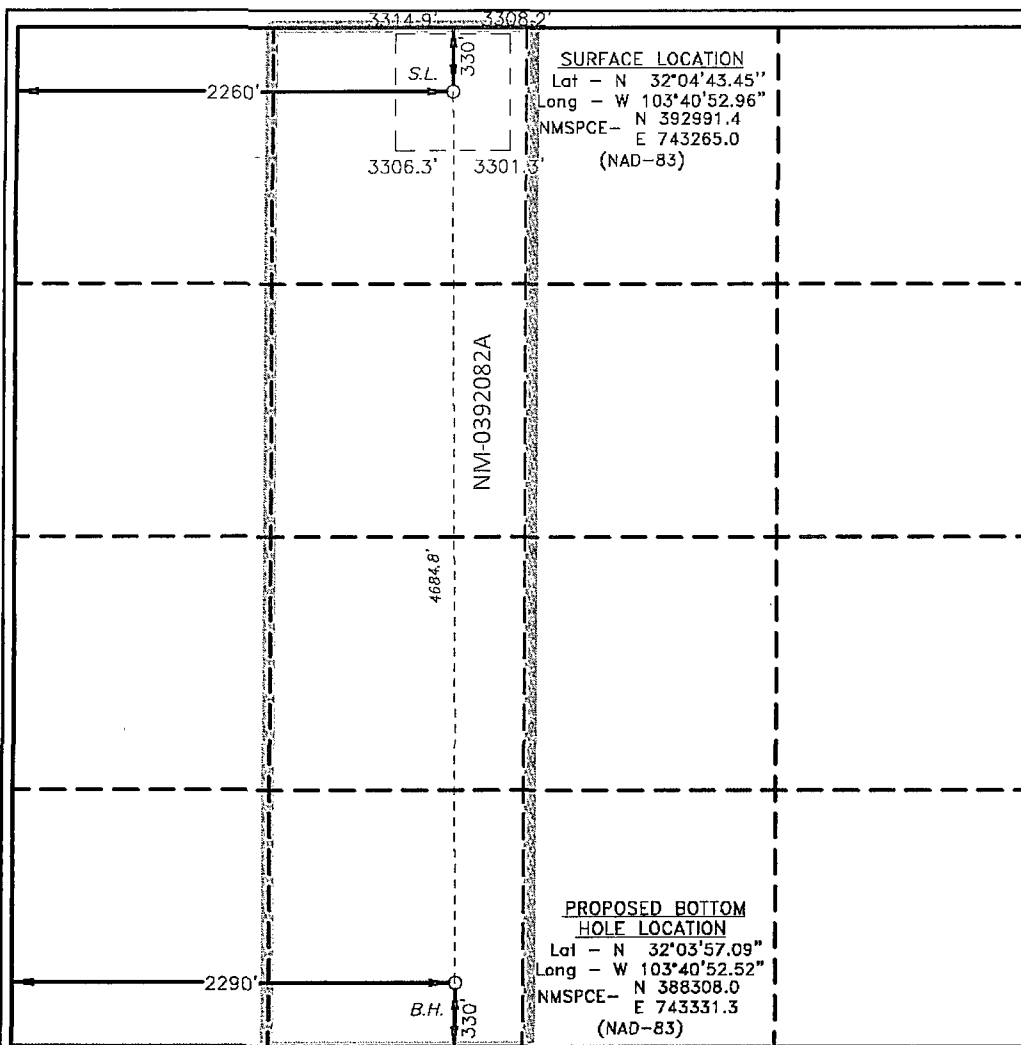
UL or lot No.	Section	Township	Range	Lot Idn	Feet from the	North/South line	Feet from the	East/West line	County
C	4	26 S	32 E		330	NORTH	2260	WEST	LEA

Bottom Hole Location If Different From Surface

UL or lot No.	Section	Township	Range	Lot Idn	Feet from the	North/South line	Feet from the	East/West line	County
N	4	26 S	32 E		330	SOUTH	2290	WEST	LEA

Dedicated Acres 160	Joint or Infill	Consolidation Code	Order No.
------------------------	-----------------	--------------------	-----------

NO ALLOWABLE WILL BE ASSIGNED TO THIS COMPLETION UNTIL ALL INTERESTS HAVE BEEN CONSOLIDATED
OR A NON-STANDARD UNIT HAS BEEN APPROVED BY THE DIVISION



SURFACE LOCATION
Lat - N 32°04'43.45"
Long - W 103°40'52.96"
NMSPEC- N 392991.4
E 743265.0
(NAD-83)

PROPOSED BOTTOM
HOLE LOCATION
Lat - N 32°03'57.09"
Long - W 103°40'52.52"
NMSPEC- N 388308.0
E 743331.3
(NAD-83)

OPERATOR CERTIFICATION

I hereby certify that the information contained herein is true and complete to the best of my knowledge and belief, and that this organization either owns a working interest or unleased mineral interest in the land including the proposed bottom hole location or has a right to drill this well at this location pursuant to a contract with an owner of such a mineral or working interest, or to a voluntary pooling agreement or a compulsory pooling order heretofore entered by the division.

Paula Brunson 10/4/2012
Signature Date

Paula Brunson
Printed Name
pbrunson@cimarex.com
Email Address

SURVEYOR CERTIFICATION

I hereby certify that the well location shown on this plat was plotted from field notes of actual surveys made by me or under my supervision, and that the same is true and correct to the best of my belief.

February 6, 2012
Date Surveyed
Signature and Seal of Professional Surveyor

Certificate No. Gary L. Jones 7977

Basin Surveys 25945

JAN 28 2014

PM