

DISTRICT I
1625 N. French Dr., Hobbs, NM 88240

HOBBS OGD

State of New Mexico
Energy, Minerals & Natural Resources Department

Form C-102
Revised October 12, 2005
Submit to Appropriate District Office
State Lease - 4 Copies
Fee Lease - 3 Copies

DISTRICT II
1301 W. Grand Avenue, Artesia, NM 88210

JAN 24 2014
OIL CONSERVATION DIVISION
1220 South St. Frances Dr.
Santa Fe, NM 87505

DISTRICT III
1000 Rio Brazos Rd., Aztec, NM 87410

RECEIVED

DISTRICT IV
1220 S. St. Francis Dr., Santa Fe, NM 87505

☐ AMENDED REPORT

WELL LOCATION AND ACREAGE DEDICATION PLAT

| | | |
|-----------------------------------|--|--|
| API Number 30-025-41630 | Pool Code 58960 | Pool Name TEAS EAST; Bone Spring |
| Property Code 302795 | Property Name HAMON FED COM A | Well Number 2H |
| OGRID No. 240974 | Operator Name LEGACY RESERVES OPERATING LP | Elevation 3610' |

Surface Location

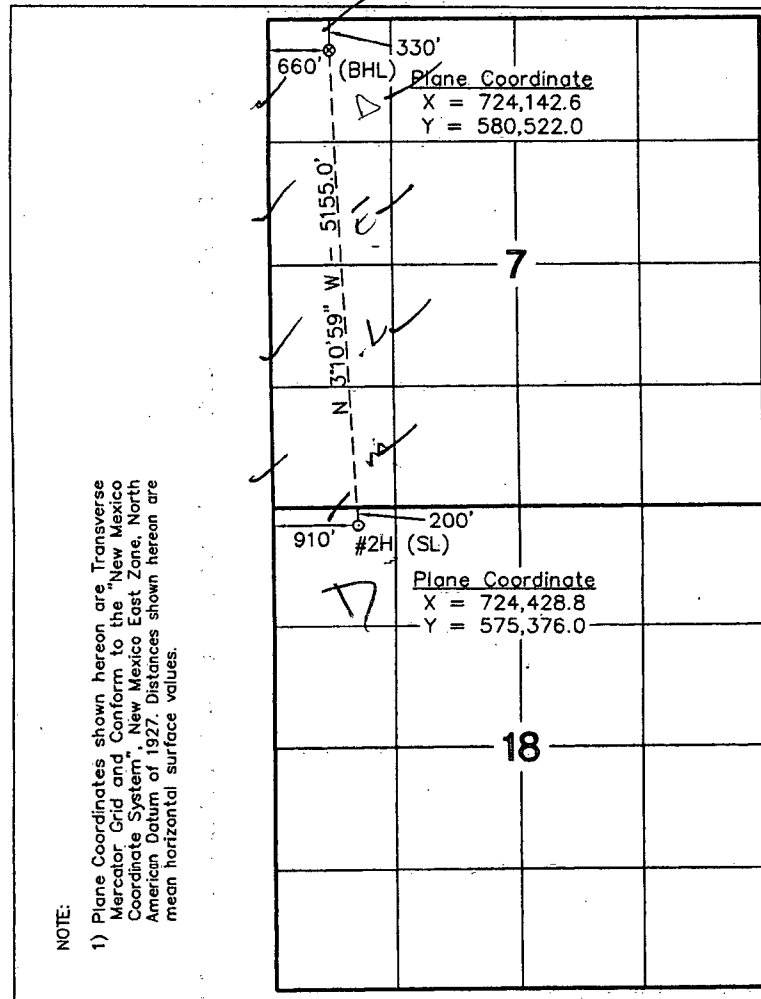
| UL or lot No. | Section | Township | Range | Lot Idn | Feet from the | North/South line | Feet from the | East/West line | County |
|---------------|---------|----------|-------|---------|---------------|------------------|---------------|----------------|--------|
| D | 18 | 20 S | 34 E | | 200 | NORTH | 910 | WEST | LEA |

Bottom Hole Location If Different From Surface

| UL or lot No. | Section | Township | Range | Lot Idn | Feet from the | North/South line | Feet from the | East/West line | County |
|---------------|---------|----------|-------|---------|---------------|------------------|---------------|----------------|--------|
| 1 | 7 | 20 S | 34 E | | 330 | NORTH | 660 | WEST | LEA |

| | | | |
|----------------------------------|-----------------|--------------------|-----------|
| Dedicated Acres 160.44 | Joint or Infill | Consolidation Code | Order No. |
|----------------------------------|-----------------|--------------------|-----------|

NO ALLOWABLE WILL BE ASSIGNED TO THIS COMPLETION UNTIL ALL INTERESTS HAVE BEEN CONSOLIDATED OR A NON-STANDARD UNIT HAS BEEN APPROVED BY THE DIVISION



OPERATOR CERTIFICATION

I hereby certify the information contained herein is true and complete to the best of my knowledge and belief, and that this organization either owns a working interest or unleased mineral interest in the land including the proposed bottom hole location or has a right to drill this well at this location pursuant to a contract with an owner of such a mineral or working interest, or to a voluntary pooling agreement or a compulsory pooling order heretofore entered by the division.

Barry W. Hunt 11/13/13
Signature Date
Barry W. Hunt
Printed Name

SURVEYOR CERTIFICATION

I hereby certify that the well location shown on this plat was plotted from field notes of actual surveys made by me or under my supervision and that the same is true and correct to the best of my belief.

January 15, 2013

Date of Survey
Signature *W. O. McDonald* SJA
Seal of Professional Surveyor



W.O. Num. 2013-0077
Certificate No. *W. O. McDonald* 12185

1"=2000'

JAN 28 2014