

DISTRICT I
1625 N. French Dr., Hobbs, NM 88240
Phone (575) 393-6161 Fax: (575) 393-0720

DISTRICT II
811 S. First St., Artesia, NM 88210
Phone (505) 748-1283 Fax: (505) 748-9720

DISTRICT III
1000 Rio Brazos Rd., Aztec, NM 87401
Phone (505) 334-6178 Fax: (505) 334-6179

DISTRICT IV
1220 S. St. Francis Dr., Santa Fe, NM 87505
Phone (505) 476-3450 Fax: (505) 476-3452

HOBBS OCD

JAN 09 2014

RECEIVED

State of New Mexico
Energy, Minerals and Natural Resources Department

OIL CONSERVATION DIVISION
1220 South St. Francis Dr.
Santa Fe, New Mexico 87505

Form C-102
Revised August 1, 2011

Submit one copy to appropriate
District Office

WELL LOCATION AND ACREAGE DEDICATION PLAT

☐ AMENDED REPORT

API Number 30-025-40576	Pool Code 5535	Pool Name Berry; Bone Spring, North
Property Code 39221	Property Name September Grass BSG State Com	Well Number 1H
OGRID No. 025575	Operator Name YATES PETROLEUM CORPORATION	Elevation 3,714' GR

Surface Location

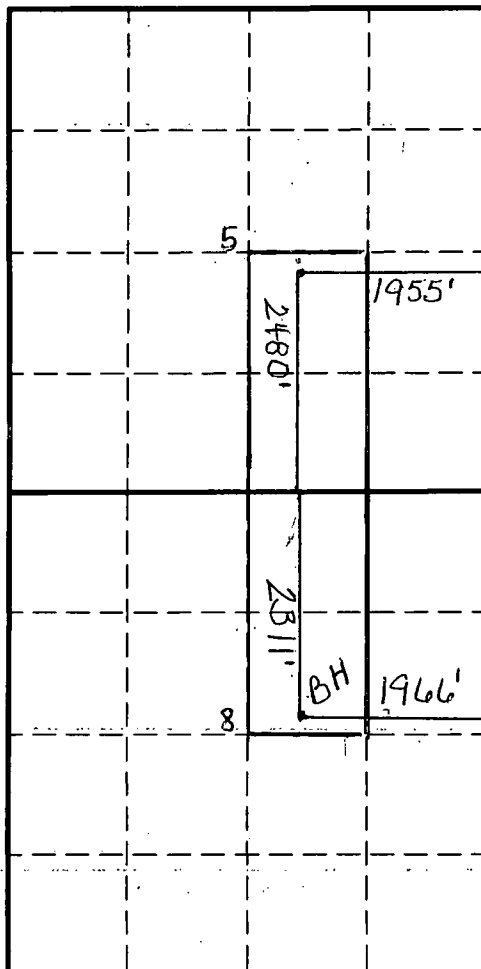
UL or lot No.	Section	Township	Range	Lot Idn	Feet from the	North/South line	Feet from the	East/West line	County
J	5	21S	34E		2480	South	1955	East	Lea

Bottom Hole Location If Different From Surface

UL or lot No.	Section	Township	Range	Lot Idn	Feet from the	North/South line	Feet from the	East/West line	County
G	8	21S	34E		2311	North	1966	East	Lea

Dedicated Acres	Joint or Infill	Consolidation Code	Order No.
160			

NO ALLOWABLE WILL BE ASSIGNED TO THIS COMPLETION UNTIL ALL INTERESTS HAVE BEEN CONSOLIDATED
OR A NON-STANDARD UNIT HAS BEEN APPROVED BY THE DIVISION



OPERATOR CERTIFICATION

I hereby certify that the information...
contained herein is true and complete to
the best of my knowledge and belief, and that
this organization either owns a working
interest or unleased mineral interest in the
land including the proposed bottom hole
location or has a right to drill this well at
this location pursuant to a contract with an
owner of such a mineral or working interest,
or to a voluntary pooling agreement or a
compulsory pooling order heretofore entered by
the division.

Laura Watts 1/8/14
Signature Date

Laura Watts

Printed Name

laura@yatespetroleum.com

Email Address

SURVEYOR CERTIFICATION

I hereby certify that the well location shown
on this plat was plotted from field notes of
actual surveys made by me or under my
supervision and that the same is true and
correct to the best of my belief.

Date Surveyed

Signature & Seal of
Professional Surveyor

0' 1000' 2000' 3000' 4000'
SCALE: 1" = 2000'
WO Num.:

JAN 28 2014