

JAN 27 2014

RECEIVED

OIL CONSERVATION DIVISION

Santa Fe, NM 87505

District Office

☐ AMENDED REPORT

¹ API Number 30-025-41625 ✓	² Pool Code 59900	³ Pool Name TRIPLE X; BONE SPRING
⁴ Property Code 40329	⁵ Property Name SEA SNAKE 35 STATE ✓	⁶ Well Number 1H ✓
⁷ OGRID No. 6137 ✓	⁸ Operator Name DEVON ENERGY PRODUCTION COMPANY, L.P. ✓	⁹ Elevation 3657.0

UL or lot no.	Section	Township	Range	Lot ldn	Feet from the	North/South line	Feet from the	East/West line	County
M	26	23 S	33 E		315	SOUTH	1300	WEST	LEA

UL or lot no.	Section	Township	Range	Lot Idn	Feet from the	North/South line	Feet from the	East/West line	County
M	35	23 S	33 E		330	SOUTH	660	WEST	LEA

¹² Dedicated Acres 160	¹³ Joint or Infill	¹⁴ Consolidation Code	¹⁵ Order No.
--------------------------------------	-------------------------------	----------------------------------	-------------------------

<p>N00 25.12° W 2636.90 FT</p> <p>N00 25.51° W 2652.65 FT</p> <p>N00 25.30° W 2644.63 FT</p> <p>N00 25.30° W 2644.63 FT</p>	<p style="text-align: center;">SEC. 26</p> <p>W Q CORNER SEC. 26 LAT. = 32.2758360° N LONG. = 103.5517455° W</p> <p>NMSP EAST (FT) N = 464961.37 E = 782895.46</p> <p>SEA SNAKE "35" STATE #1H ELEV. = 3657.0' LAT. = 32.2693965° N (NAD83) LONG. = 103.5475388° W NMSP EAST (FT) N = 462828.71 E = 784212.81</p> <p>SW CORNER SEC. 26 LAT. = 32.2685456° N LONG. = 103.5517436° W</p> <p>NMSP EAST (FT) N = 462309.64 E = 782915.41</p> <p style="text-align: center;">SURFACE LOCATION</p> <p style="text-align: center;">DNF</p> <p style="text-align: center;">SEC. 35</p> <p>NOTE: LATITUDE AND LONGITUDE COORDINATES ARE SHOWN USING THE NORTH AMERICAN DATUM OF 1983 (NAD83). LISTED NEW MEXICO STATE PLANE EAST COORDINATES ARE GRID (NAD83). BASIS OF BEARING AND DISTANCES USED ARE NEW MEXICO STATE PLANE EAST COORDINATES MODIFIED TO THE SURFACE.</p> <p>BOTTOM OF HOLE LAT. = 32.2549154° N LONG. = 103.5496070° W NMSP EAST (FT) N = 457355.83 E = 783612.03</p> <p>SW CORNER SEC. 35 LAT. = 32.2540100° N LONG. = 103.5517413° W</p> <p>NMSP EAST (FT) N = 457021.62 E = 782954.62</p> <p>BOTTOM OF HOLE LAT. = 32.2540040° N LONG. = 103.5432058° W NMSP EAST (FT) N = 457038.76 E = 785593.34</p> <p>SE CORNER SEC. 35 LAT. = 32.2539921° N LONG. = 103.5346739° W</p> <p>NMSP EAST (FT) N = 457053.96 E = 788230.96</p> <p style="text-align: center;">DNF</p>	<p>E Q CORNER SEC. 26 LAT. = 32.2757731° N LONG. = 103.5346809° W</p> <p>NMSP EAST (FT) N = 464977.84 E = 788169.82</p> <p>SE CORNER SEC. 26 LAT. = 32.2684849° N LONG. = 103.5346721° W</p> <p>NMSP EAST (FT) N = 462328.41 E = 788192.26</p> <p>S00 29.06° E 2652.07 FT</p> <p>S00 25.14° E 2636.84 FT</p> <p>S00 25.14° E 2636.84 FT</p>
---	---	---

17 OPERATOR CERTIFICATION

I hereby certify that the information contained herein is true and complete to the best of my knowledge and belief, and that this organization either owns a working interest or unleased mineral interest in the land including the proposed bottom hole location or has a right to drill this well at this location pursuant to a contract with an owner of such a mineral or working interest, or to a voluntary pooling agreement or a compulsory pooling order heretofore entered by the division.

1/24/2014

Signature: David H. Cook Date: _____

Printed Name: David H. Cook Regulatory Specialist

Printed Name: david.cook@dmn.com

E-mail Address: _____

18 SURVEYOR CERTIFICATION

I hereby certify that the well location shown on this plat was plotted from field notes of actual surveys made by me or under my supervision, and that the same is true and correct to the best of my belief.

OCTOBER 2, 2013

Date of Survey: _____

Signature and Seal of Professional Surveyor: [Signature]

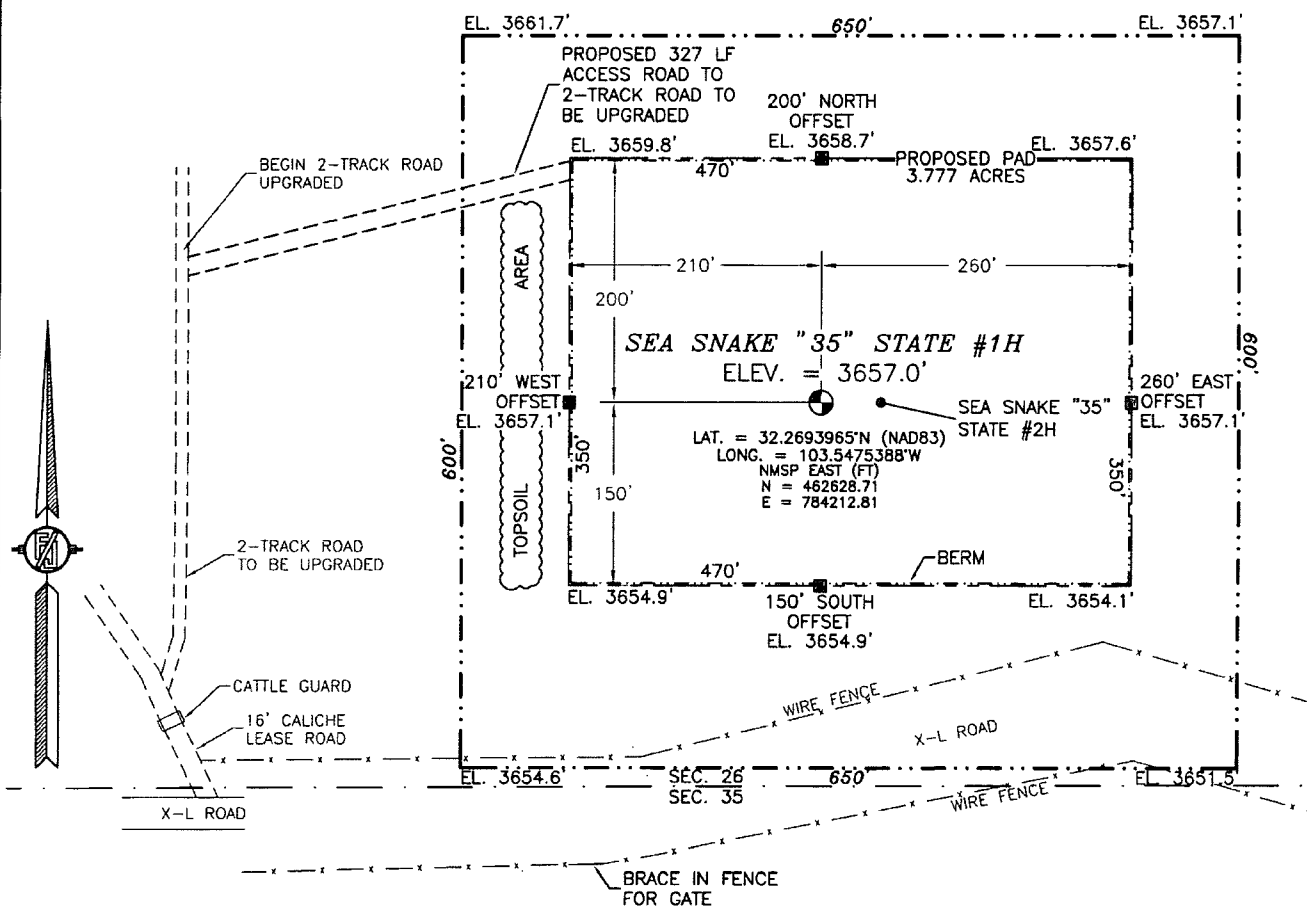
Certificate Number: PL 12797 AND AMARILLO, PLS 12797

SURVEY NO. 2295

JAN 28 2014

SECTION 26, TOWNSHIP 23 SOUTH, RANGE 33 EAST, N.M.P.M.
LEA COUNTY, STATE OF NEW MEXICO
SITE MAP

NOTE: LATITUDE AND LONGITUDE COORDINATES ARE SHOWN USING THE NORTH AMERICAN DATUM OF 1983 (NAD83). LISTED NEW MEXICO STATE PLANE EAST COORDINATES ARE GRID (NAD83). BASIS OF BEARING AND DISTANCES USED ARE NEW MEXICO STATE PLANE EAST COORDINATES MODIFIED TO THE SURFACE



0 15 75 150 300
SCALE 1" = 150'

DIRECTIONS TO LOCATION

FROM THE INTERSECTION OF STATE HIGHWAY 128 (JAL HIGHWAY) AND CR 21 (DELAWARE BASIN ROAD) GO NORTH ON CR 21 3.98 MILES TO X-L ROAD ON LEFT, GO WEST ON X-L ROAD 2.25 MILES TO TURNOUT ON RIGHT TO CIMAREX "WEST BELL LAKE BATTERY", GO NORTH JUST PAST FIRST CATTLE GUARD ON RIGHT, TURN TO 2-TRACK ROAD, GO NORTH 355'± ON RIGHT FOLLOW FLAGS 327' TO NORTHWEST CORNER OF PAD.

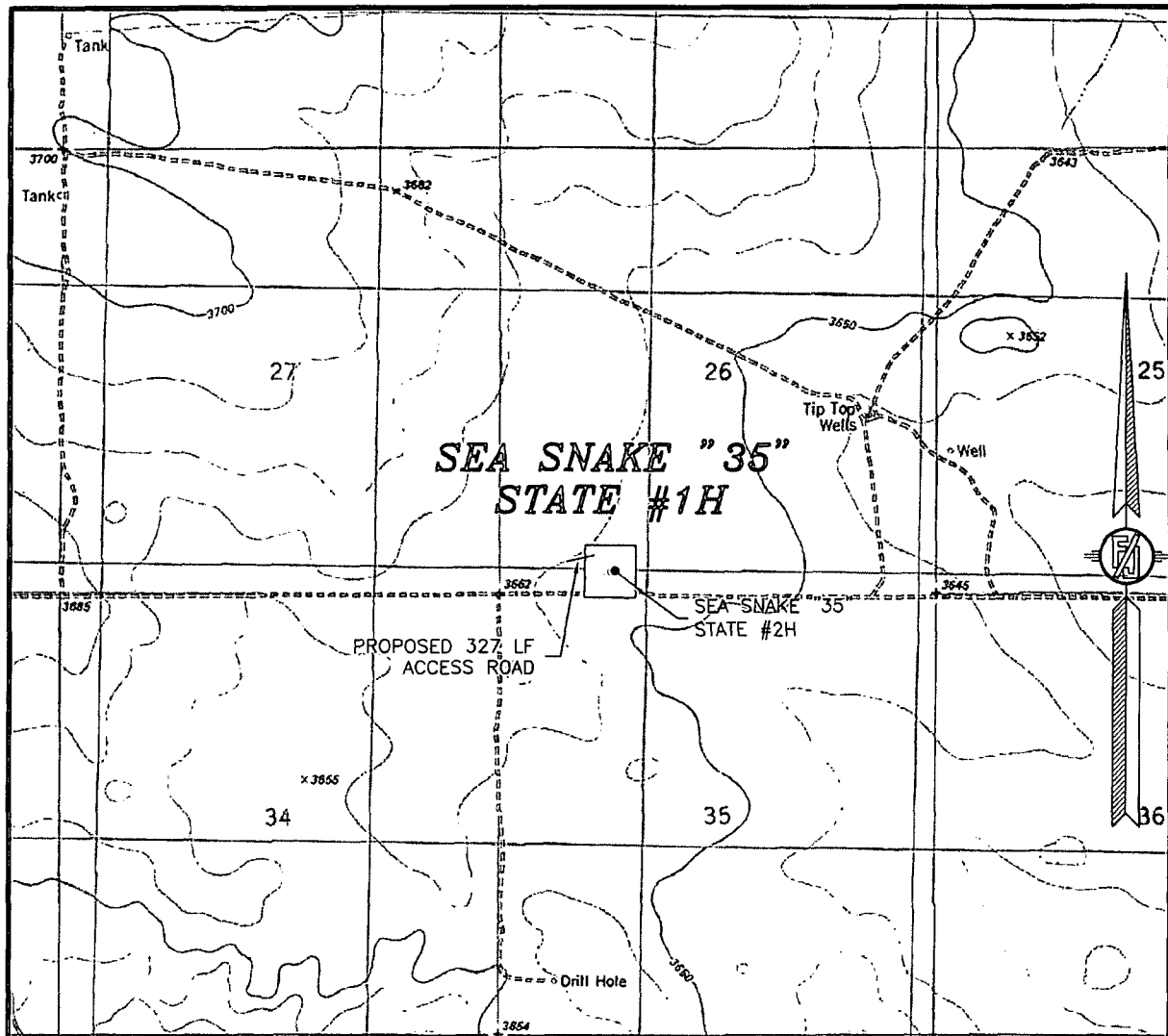
DEVON ENERGY PRODUCTION COMPANY, L.P.
SEA SNAKE "35" STATE #1H
LOCATED 315 FT. FROM THE SOUTH LINE
AND 1300 FT. FROM THE WEST LINE OF
SECTION 26, TOWNSHIP 23 SOUTH,
RANGE 33 EAST, N.M.P.M.
LEA COUNTY, STATE OF NEW MEXICO

OCTOBER 2, 2013

SURVEY NO. 2295

MADRON SURVEYING, INC. 301 SOUTH CANAL CARLSBAD, NEW MEXICO
(575) 234-3341

SECTION 26, TOWNSHIP 23 SOUTH, RANGE 33 EAST, N.M.P.M.
LEA COUNTY, STATE OF NEW MEXICO
LOCATION VERIFICATION MAP



USGS QUAD MAP:
TIP TOP WELLS

NOT TO SCALE

DEVON ENERGY PRODUCTION COMPANY, L.P.

SEA SNAKE "35" STATE #1H

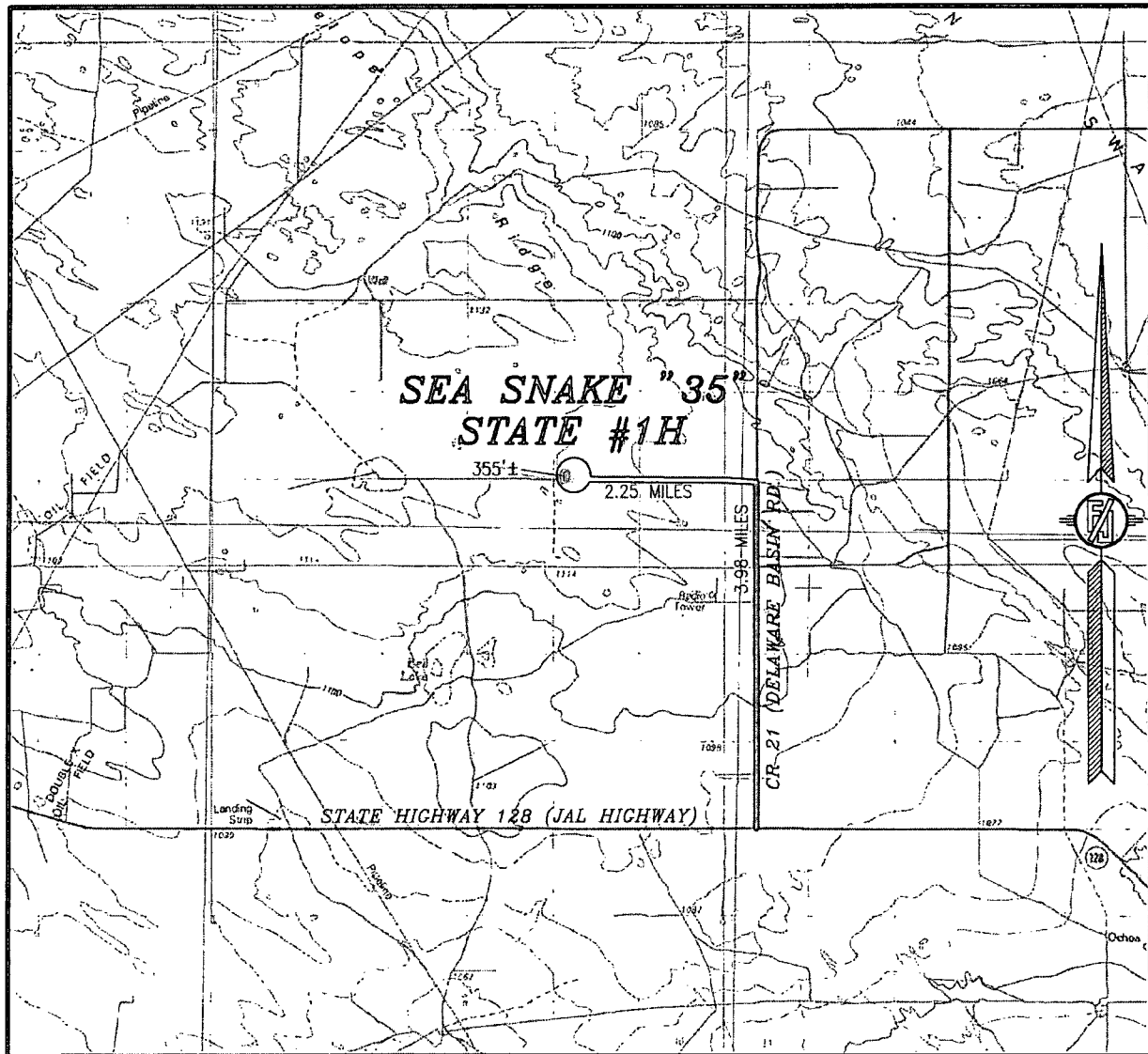
LOCATED 315 FT. FROM THE SOUTH LINE
AND 1300 FT. FROM THE WEST LINE OF
SECTION 26, TOWNSHIP 23 SOUTH,
RANGE 33 EAST, N.M.P.M.
LEA COUNTY, STATE OF NEW MEXICO

OCTOBER 2, 2013

SURVEY NO. 2295

MADRON SURVEYING, INC. 301 SOUTH CANAL (575) 234-3341 CARLSBAD, NEW MEXICO

SECTION 26, TOWNSHIP 23 SOUTH, RANGE 33 EAST, N.M.P.M.
LEA COUNTY, STATE OF NEW MEXICO
VICINITY MAP



NOT TO SCALE

DEVON ENERGY PRODUCTION COMPANY, L.P.

SEA SNAKE "35" STATE #1H

LOCATED 315 FT. FROM THE SOUTH LINE
AND 1300 FT. FROM THE WEST LINE OF
SECTION 26, TOWNSHIP 23 SOUTH,
RANGE 33 EAST, N.M.P.M.
LEA COUNTY, STATE OF NEW MEXICO

OCTOBER 2, 2013

DIRECTIONS TO LOCATION

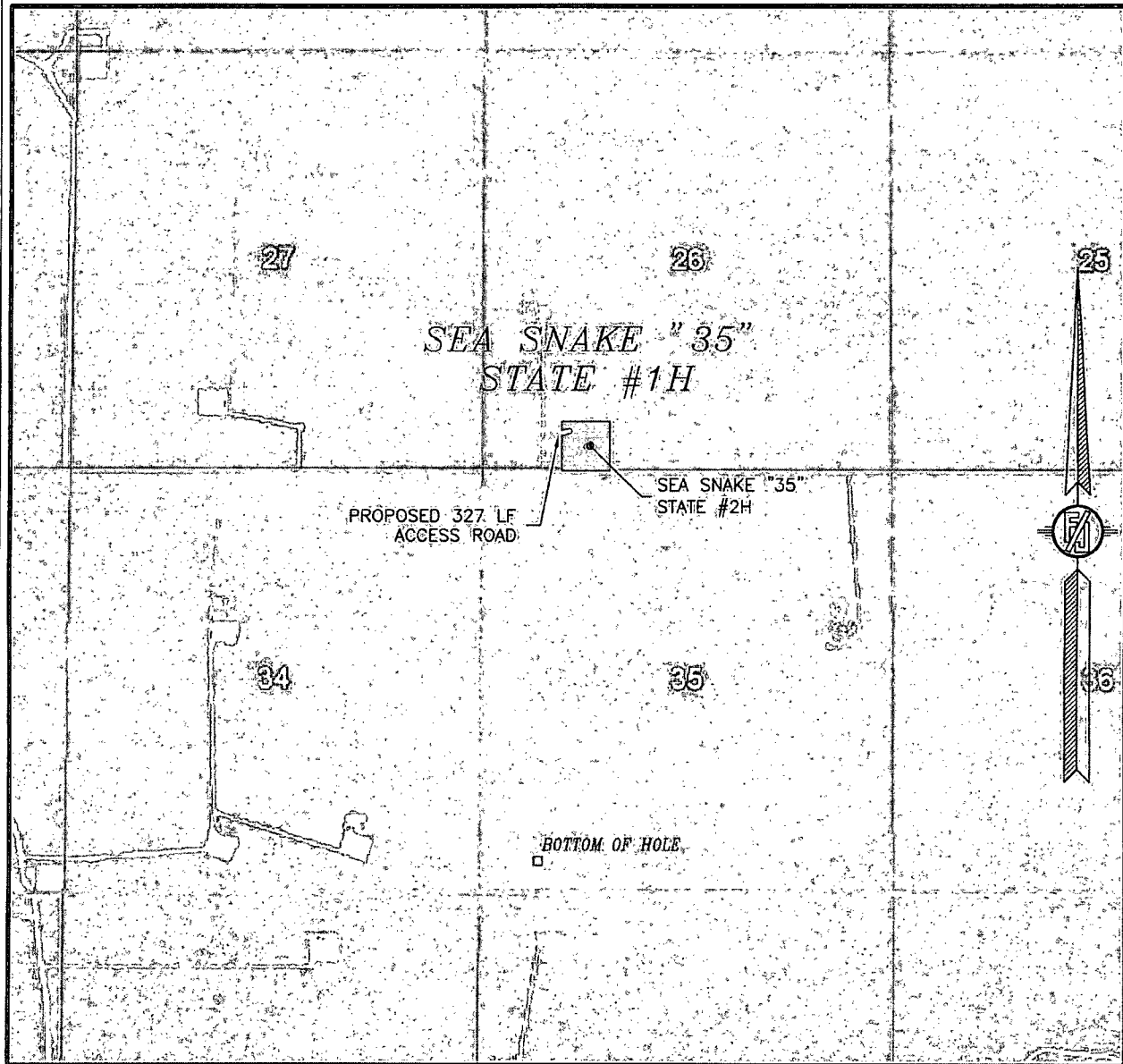
FROM THE INTERSECTION OF STATE HIGHWAY 128 (JAL HIGHWAY) AND
CR 21 (DELAWARE BASIN ROAD) GO NORTH ON CR 21 3.98 MILES
TO X-L ROAD ON LEFT, GO WEST ON X-L ROAD 2.25 MILES TO
TURNOUT ON RIGHT TO CIMAREX "WEST BELL LAKE BATTERY", GO
NORTH JUST PAST FIRST CATTLE GUARD ON RIGHT, TURN TO
2-TRACK ROAD, GO NORTH 355'± ON RIGHT FOLLOW FLAGS 327' TO
NORTHWEST CORNER OF PAD.

SURVEY NO. 2295

MADRON SURVEYING, INC. 301 SOUTH CANAL
(575) 234-3341

CARLSBAD, NEW MEXICO

SECTION 26, TOWNSHIP 23 SOUTH, RANGE 33 EAST, N.M.P.M.
LEA COUNTY, STATE OF NEW MEXICO
AERIAL PHOTO



NOT TO SCALE
AERIAL PHOTO:
GOOGLE EARTH
MARCH 2012

DEVON ENERGY PRODUCTION COMPANY, L.P.

SEA SNAKE "35" STATE #1H

LOCATED 315 FT. FROM THE SOUTH LINE
AND 1300 FT. FROM THE WEST LINE OF
SECTION 26, TOWNSHIP 23 SOUTH,
RANGE 33 EAST, N.M.P.M.
LEA COUNTY, STATE OF NEW MEXICO

OCTOBER 2, 2013

SURVEY NO. 2295

MADRON SURVEYING, INC. 301 SOUTH CANAL (575) 234-3341 CARLSBAD, NEW MEXICO