

District I
1625 N. French Dr., Hobbs, NM 88240
Phone: (505) 393-6161 Fax: (505) 393-0720
District II
811 S. First St., Artesia, NM 88210
Phone: (505) 748-1283 Fax: (505) 748-9720
District III
1000 Rio Brazos Road, Aztec, NM 87410
Phone: (505) 334-6178 Fax: (505) 334-6178
District IV
1220 S. St. Francis Dr., Santa Fe, NM 87505
Phone: (505) 476-3460 Fax: (505) 476-3460

HOBBS OCD

FEB 18 2014

RECEIVED

State of New Mexico
Energy, Minerals & Natural Resources
Department
OIL CONSERVATION DIVISION
1220 South St. Francis Dr.
Santa Fe, NM 87505

FORM C-102

Revised August 1, 2011

Submit one copy to appropriate

District Office

☐ AMENDED REPORT

WELL LOCATION AND ACREAGE DEDICATION PLAT

| | | |
|-------------------------------------|--|--|
| ¹ API Number 30-025- | ² Pool Code 7280 | ³ Pool Name Bradley; Bone Spring |
| ⁴ Property Code 38129 | ⁵ Property Name ENDURANCE 36 STATE COM | ⁶ Well Number #2H |
| ⁷ GRID No. 7377 | ⁸ Operator Name EOG RESOURCES, INC. | ⁹ Elevation 3334' |

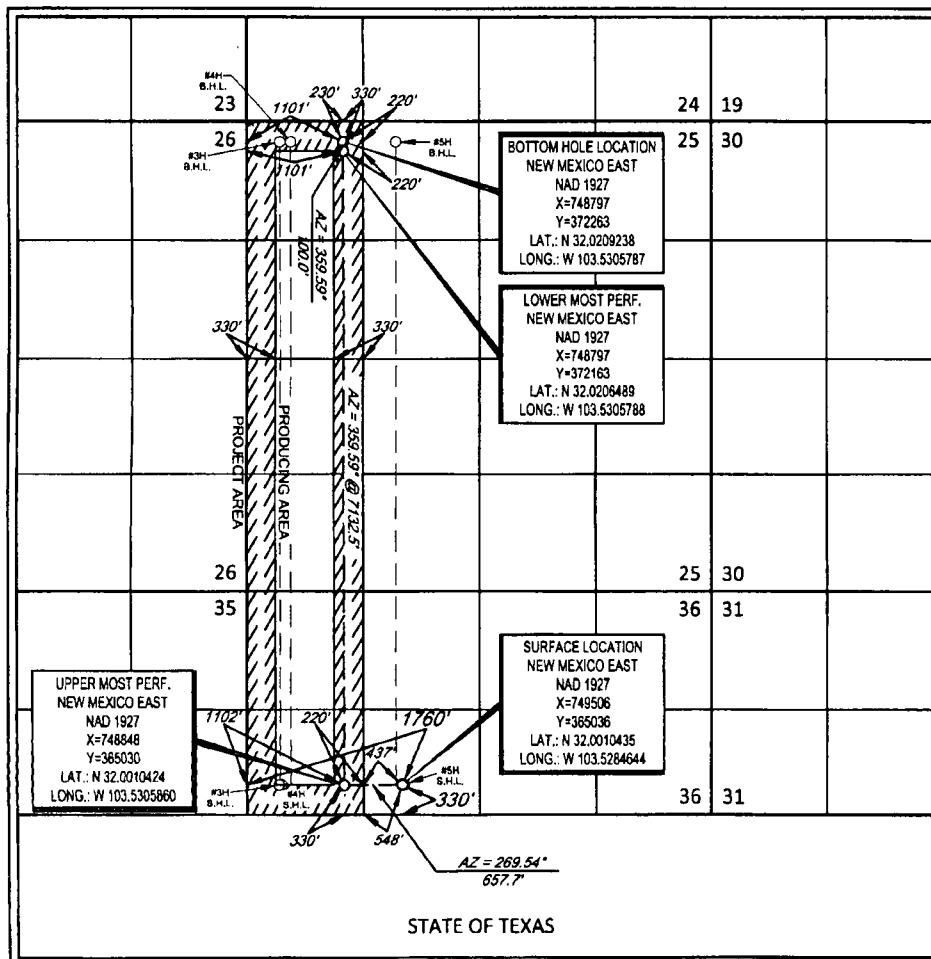
¹⁰Surface Location

| | | | | | | | | | |
|--------------------|---------------|------------------|---------------|--------------|-----------------------|---------------------------|------------------------|------------------------|---------------|
| UL or lot no. F | Section 36 | Township 26-S | Range 33-E | Lot Idn - | Feet from the 330' | North/South line SOUTH | Feet from the 1760' | East/West line WEST | County LEA |
|--------------------|---------------|------------------|---------------|--------------|-----------------------|---------------------------|------------------------|------------------------|---------------|

| | | | | | | | | | |
|--------------------|---------------|------------------|---------------|--------------|-----------------------|---------------------------|------------------------|------------------------|---------------|
| UL or lot no. D | Section 25 | Township 26-S | Range 33-E | Lot Idn - | Feet from the 230' | North/South line NORTH | Feet from the 1101' | East/West line WEST | County LEA |
|--------------------|---------------|------------------|---------------|--------------|-----------------------|---------------------------|------------------------|------------------------|---------------|

| | | | |
|---|-------------------------------|----------------------------------|-------------------------|
| ¹¹ Dedicated Acres 236.12 | ¹² Joint or Infill | ¹³ Consolidation Code | ¹⁴ Order No. |
|---|-------------------------------|----------------------------------|-------------------------|

No allowable will be assigned to this completion until all interests have been consolidated or a non-standard unit has been approved by the division.



¹⁷OPERATOR CERTIFICATION

I hereby certify that the information contained herein is true and complete to the best of my knowledge and belief, and that this organization either owns a working interest or unleased mineral interest in the land including the proposed bottom hole location or has a right to drill this well at this location pursuant to a contract with an owner of such a mineral or working interest, or to a voluntary pooling agreement or a compulsory pooling order heretofore entered by the division.

Stan Wagner 2/10/14
Signature Date

Stan Wagner

Printed Name

E-mail Address

¹⁸SURVEYOR CERTIFICATION

I hereby certify that the well location shown on this plat was plotted from field notes of actual surveys made by me or under my supervision, and that the same is true to the best of my belief.

8/17/2012
Date of Survey
Signature of Surveyor

MICHAEL BROWN
NEW MEXICO
18329
PROFESSIONAL SURVEYOR

Certificate Number

Amended

FEB 19 2014