

DISTRICT I
1625 N. French Dr., Hobbs, NM 88240
Phone: (575) 393-6161 Fax: (575) 393-0720

DISTRICT II
811 S. First St., Artesia, NM 88210
Phone: (575) 748-1283 Fax: (575) 748-9720

DISTRICT III
1600 Rio Brazos Road, Aztec, NM 87410
Phone: (505) 334-6178 Fax: (505) 334-6170

DISTRICT IV
1220 S. St. Francis Dr., Santa Fe, NM 87505
Phone: (505) 476-3460 Fax: (505) 476-3462

HOBBS OCD

FEB 05 2014

RECEIVED

State of New Mexico
Energy, Minerals & Natural Resources Department
OIL CONSERVATION DIVISION
1220 South St. Francis Dr.
Santa Fe, New Mexico 87505

Form C-102
Revised August 1, 2011
Submit one copy to appropriate
District Office

□ AMENDED REPORT

WELL LOCATION AND ACREAGE DEDICATION PLAT

API Number 30-025-41678	Pool Code 960	Pool Name Scharb, Bone Spring
Property Code 39629 40385	Property Name AIRSTrip 31 STATE COM	Well Number 2H
OGRID No. 10179	Operator Name HARVEY E. YATES	Elevation 3948'

Surface Location

UL or lot No.	Section	Township	Range	Lot Idn	Feet from the	North/South line	Feet from the	East/West line	County
4	31	18-S	35-E		150	SOUTH	330	WEST	LEA

Bottom Hole Location If Different From Surface

UL or lot No.	Section	Township	Range	Lot Idn	Feet from the	North/South line	Feet from the	East/West line	County
1	31	18-S	35-E		330	NORTH	710	WEST	LEA

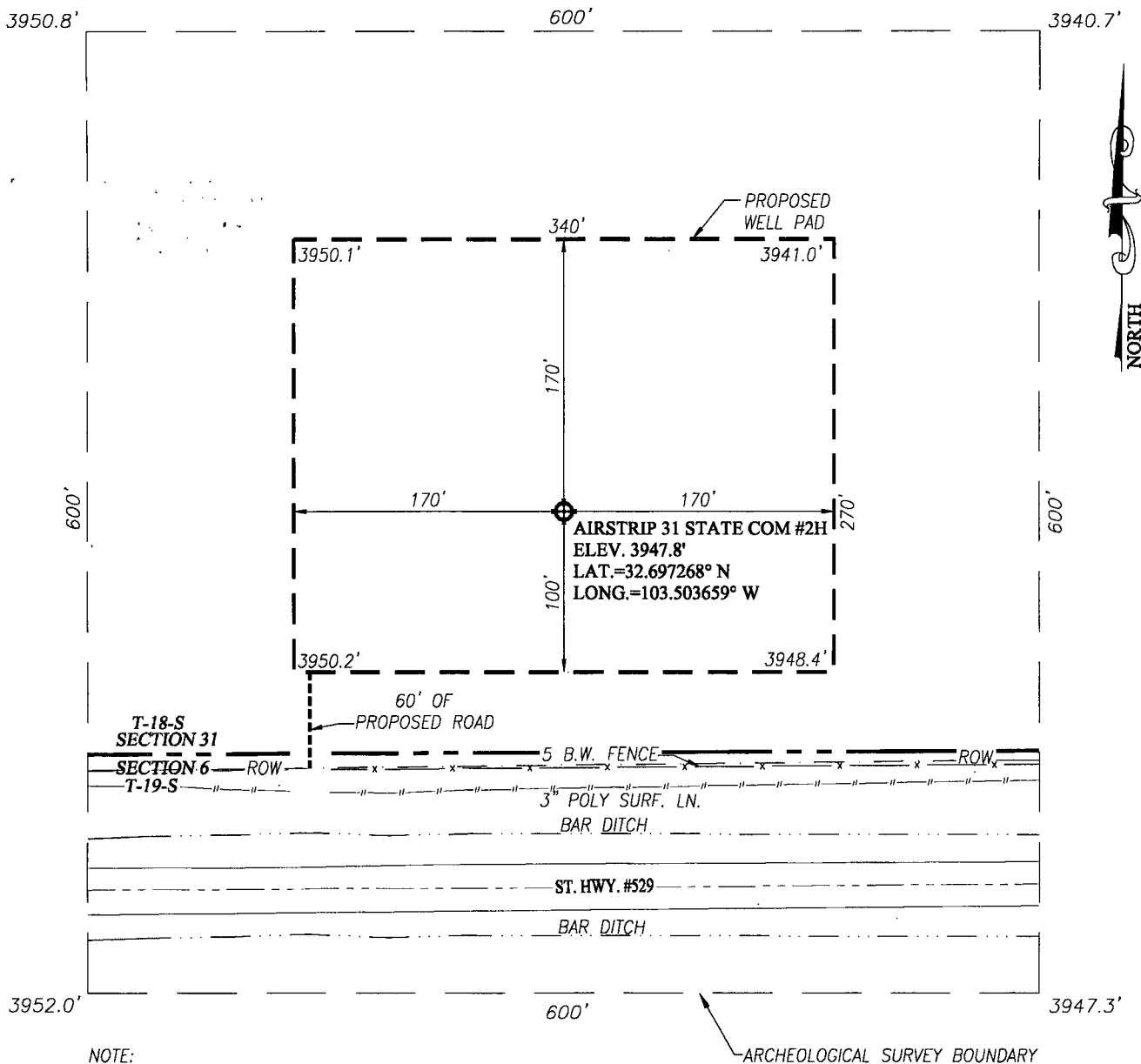
Dedicated Acres 160	Joint or Infill	Consolidation Code	Order No.
-------------------------------	-----------------	--------------------	-----------

NO ALLOWABLE WILL BE ASSIGNED TO THIS COMPLETION UNTIL ALL INTERESTS HAVE BEEN CONSOLIDATED OR A NON-STANDARD UNIT HAS BEEN APPROVED BY THE DIVISION

	<p>GEODETIC COORDINATES NAD 27 NME</p> <p>SURFACE LOCATION Y=618375.6 N X=755233.1 E</p> <p>LAT.=32.697268° N LONG.=103.503659° W</p> <p>BOTTOM HOLE LOCATION Y=623189.9 N X=755567.3 E</p>	<p>OPERATOR CERTIFICATION</p> <p>I hereby certify that the information herein is true and complete to the best of my knowledge and belief, and that this organization either owns a working interest or unleased mineral interest in the land including the proposed bottom hole location or has a right to drill this well at this location pursuant to a contract with an owner of such mineral or working interest, or to a voluntary pooling agreement or a compulsory pooling order heretofore entered by the division.</p> <p><i>Keith Cannon</i> 1-31-14 Signature Date</p> <p>Keith Cannon Printed Name</p> <p>kcannon@hccenergy.com E-mail Address</p>
	<p>CORNER COORDINATES TABLE</p> <p>A - Y=623518.7 N, X=754854.3 E B - Y=623520.7 N, X=756135.3 E C - Y=618228.9 N, X=756188.8 E D - Y=618224.3 N, X=754904.6 E</p>	<p>SURVEYOR CERTIFICATION</p> <p>I hereby certify that the well location shown on this plat was plotted from field notes of actual surveys made by me or under my supervision, and that the same is true and correct to the best of my belief.</p> <p>DECEMBER 16, 2013</p>
	<p>DETAIL</p> <p>3950.8' 3940.7' 600' 3952.0' 3947.3'</p>	<p>Date of Survey</p> <p>Signature of Professional Surveyor:</p> <p>GARY G. EIDSON 12641 8/14</p> <p>Certificate Number Gary G. Eidson 12641 Ronald J. Eidson 3239</p> <p>ACK JWSC W.O.: 13.11.1419</p>

FEB 27 2014

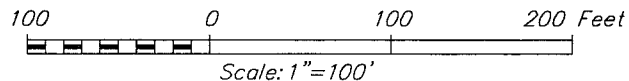
P.M.



NOTE:
SEE "LOCATION VERIFICATION MAP"
FOR PROPOSED ROAD LOCATION.

DIRECTIONS TO LOCATION

FROM THE INTERSECTION OF US HWY 62-180 AND
ST. HWY #529, GO WEST ON ST. HWY #529 FOR
APPROX. 7.1 MILES. THE LOCATION IS NORTH OF
RIGHT OF WAY FENCE APPROX. 160 FEET.



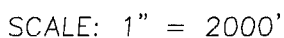
HARVEY E. YATES

AIRSTRIP 31 STATE COM #2H WELL
LOCATED 150 FEET FROM THE SOUTH LINE
AND 330 FEET FROM THE WEST LINE OF SECTION 31,
TOWNSHIP 18 SOUTH, RANGE 35 EAST, N.M.P.M.,
LEA COUNTY, NEW MEXICO

Survey Date: 12/16/13	CAD Date: 1/6/13	Drawn By: ACK
W.O. No.: 13111419	Rev: .	Rel. W.O.: Sheet 1 of 1

PROVIDING SURVEYING SERVICES
SINCE 1946
JOHN WEST SURVEYING COMPANY
412 N. DAL PASO
HOBBS, N.M. 88240
(575) 393-3117 www.jwsc.biz

S NORTH



CONTOUR INTERVAL:
IRON HOUSE DRAW, N.M. - 10'
IRON HOUSE WELL, N.M. - 10'

SEC. 31 TWP. 18-S RGE. 35-E

SURVEY N.M.P.M.

COUNTY LEA STATE NEW MEXICO

DESCRIPTION 150' FSL & 330' FWL

ELEVATION 3948'

OPERATOR HARVEY E. YATES

LEASE AIRSTRIP 31 STATE COM

U.S.G.S. TOPOGRAPHIC MAP

IRON HOUSE DRAW, N.M.

DIRECTIONS TO AIRSTRIP 31 STATE COM #2H:

FROM THE INTERSECTION OF US HWY 62-180 AND ST. HWY #529,
GO WEST ON ST. HWY #529 FOR APPROX. 7.1 MILES. THE LOCATION
IS NORTH OF RIGHT OF WAY FENCE APPROX. 160 FEET.



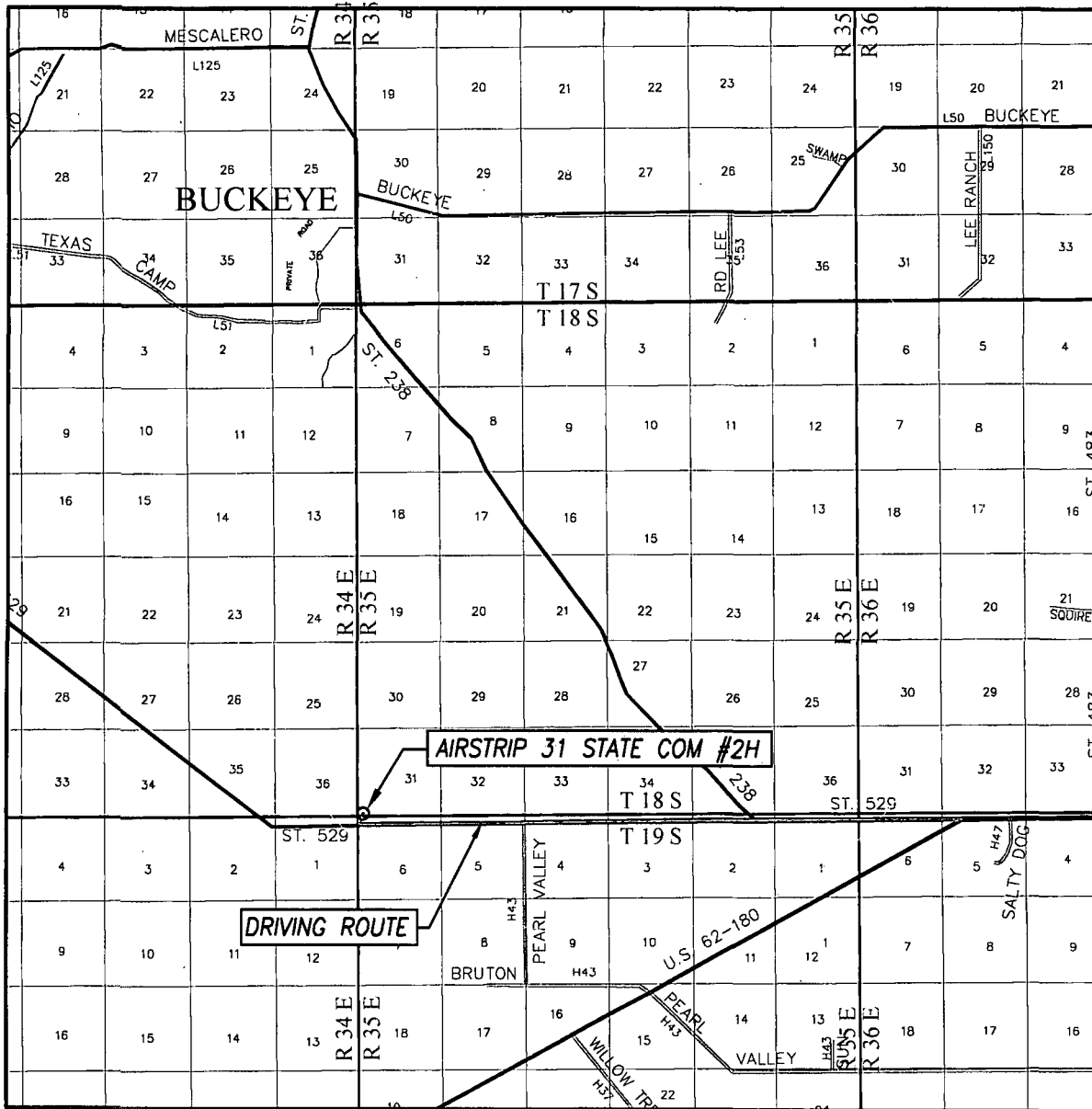
PROVIDING SURVEYING SERVICES
SINCE 1946

JOHN WEST SURVEYING COMPANY

412 N. DAL PASO

HOBBS, N.M. 88240
(575) 393-3117 www.jwsc.biz

VICINITY MAP



SCALE: 1" = 2 MILES
DRIVING ROUTE: SEE LOCATION VERIFICATION MAP

SEC. 31 TWP. 18-S RGE. 35-E
SURVEY _____ N.M.P.M.
COUNTY LEA STATE NEW MEXICO
DESCRIPTION 150' FSL & 330' FWL
ELEVATION 3948'
OPERATOR HARVEY E. YATES
LEASE AIRSTRIP 31 STATE COM

