

DISTRICT I
1625 N. French Dr., Hobbs, NM 88240

DISTRICT II
1301 W. Grand Avenue, Artesia, NM 88210

DISTRICT III
1000 Rio Brazos Rd., Aztec, NM 87410

DISTRICT IV
1220 S. St. Francis Dr., Santa Fe, NM 87505

State of New Mexico
Energy, Minerals and Natural Resources Department.

OIL CONSERVATION DIVISION
1220 South St. Francis Dr.
Santa Fe, New Mexico 87505

Form C-102
Revised October 15, 2009

Submit one copy to appropriate
District Office

☐ AMENDED REPORT

WELL LOCATION AND ACREAGE DEDICATION PLAT

API Number 30-025-40837	Pool Code 53560	Pool Name Salt Lake; Bone Spring
Property Code 39073	Property Name SNODDY FEDERAL	Well Number 23H
OGRID No. 162683	Operator Name CIMAREX ENERGY CO. OF COLORADO	Elevation 3555'

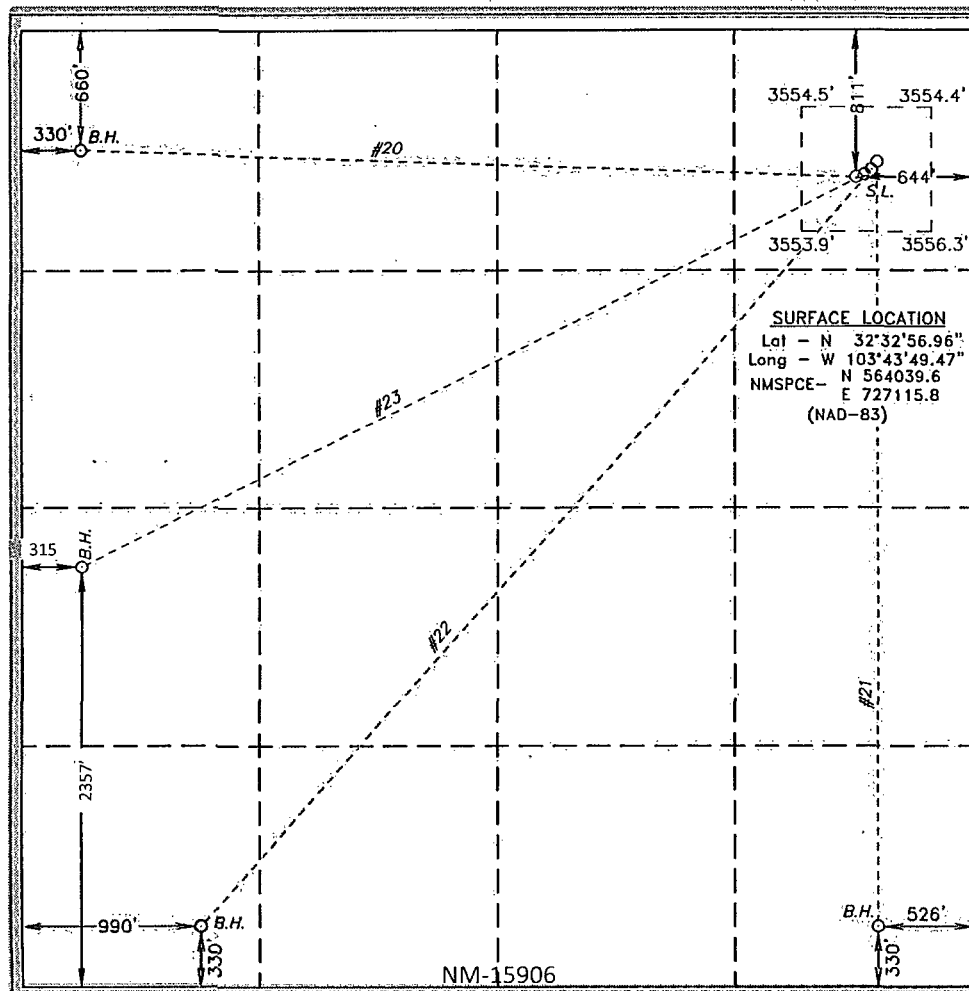
Surface Location

UL or lot No.	Section	Township	Range	Lot Idn	Feet from the	North/South line	Feet from the	East/West line	County
A	26	20 S	32 E		811	NORTH	644	EAST	LEA

Bottom Hole Location If Different From Surface

UL or lot No. L	Section 26	Township 20 S	Range 32 E	Lot Idn	Feet from the 2357 2354	North/South line SOUTH	Feet from the 315 317	East/West line WEST	County LEA
Dedicated Acres 640	Joint or Infill	Consolidation Code	Order No.						

NO ALLOWABLE WILL BE ASSIGNED TO THIS COMPLETION UNTIL ALL INTERESTS HAVE BEEN CONSOLIDATED
OR A NON-STANDARD UNIT HAS BEEN APPROVED BY THE DIVISION



OPERATOR CERTIFICATION

I hereby certify that the information contained herein is true and complete to the best of my knowledge and belief, and that this organization either owns a working interest or unleased mineral interest in the land including the proposed bottom hole location or has a right to drill this well at this location pursuant to a contract with an owner of such a mineral or working interest, or to a voluntary pooling agreement or a compulsory pooling order heretofore entered by the division.

Gloria Garza 1/13/2014
Signature Date

Gloria Garza
Printed Name

SURVEYOR CERTIFICATION

I hereby certify that the well location shown on this plat was plotted from field notes of actual surveys made by me or under my supervision and that the same is true and correct to the best of my belief.

Date Surveyed _____
Signature & Seal of _____
Professional Surveyor.

Certificate No. Gary L. Jones 7977

BASIN SURVEYS

MAR 05 2014