

30-025-41701

MULTI-POINT SURFACE USE AND OPERATIONS PLAN

MEWBOURNE OIL COMPANY

Excalibur 17 LI Fed Com #1H

1700' FSL & 210' FWL (SHL)

Sec 17-T19S-R33E

Lea County, New Mexico

HOBBS OCD

FEB 28 2014

RECEIVED

This plan is submitted with Form 3160-3, Application for Permit to Drill, Covering the above described well. The purpose of this plan is to describe the location of the proposed well, the proposed construction activities and operations plan, the magnitude of the surface disturbance involved, and the procedures to be followed in restoring the surface so that a complete appraisal can be made of the environmental impact associated with the proposed operations.

1. Existing Roads:

- A. Exhibit #3 is a road map showing the location of the proposed well. Existing roads are highlighted in black. Exhibits #3-#3C are maps showing the location of the proposed well and access road. Existing and proposed roads are highlighted in black.
- B. Directions to location from Hobbs, NM: Go west on US 62-180 west 36 miles to NM 243. Turn right (north) and continue north and west 4.6 miles to CR126. Turn right (north) 6 miles. Turn right (east) 5.2 miles. Turn left 0.1 mile. Turn right 1.1 miles to proposed lease road.
- C. Existing roads will be maintained in a condition the same as or better than before operations begin.

2. Proposed Access Road:

- A. Approx. 933.9' new road construction will be needed.
- B. The maximum width of the driving surface will be 14 feet. The road will be crowned and ditched with a 2% slope from the tip of the crown to the edge of the driving surface. The ditches will be 1 foot deep with 3:1 slopes. The road will be surfaced with rolled and compacted caliche.
- C. Mewbourne Oil Co. will cooperate with other operators in the maintenance of lease roads.

3. Location of Existing Wells:

There are producing wells within the immediate vicinity of the well site. Exhibit #4 shows the proposed well and existing wells within a one mile radius.

4. Location of Existing and/or Proposed Facilities:

- A. There are no production facilities on this lease at the present time.
- B. In the event that the well is productive, production facilities will be located on the South and West sides of location. 3" poly gas line will follow new lease road to existing MOC gas line, electric line will follow new lease road to existing MOC electric line. (See Exhibit 3D)
- C. Production vessels that will remain on this location will be painted to conform to BLM painting stipulations within 180 days of installation.

MAR 05 2014

5. Location and Type of Water Supply

The well will be drilled with a combination of fresh water and brine water based mud systems. The water will be obtained from commercial suppliers in the area and/or hauled to the location by transport trucks over existing and proposed roads as indicated in Exhibit #3.

6. Source of Construction Materials

All material required for construction of the drill pad and access roads will be obtained from private, state, or federal pits. The construction contractor will be solely responsible for securing construction materials required for this operation and paying any royalties that may be required on those materials.

7. Methods of Handling Waste Disposal:

- A. Drill cuttings not retained for evaluation purposed will be hauled to a permitted off-site facility.
- B. Water produced during operations will be hauled to an off-site permitted SWD in the area.
- C. If any liquid hydrocarbons are produced during operations, those liquids will be stored in suitable tanks until sold.
- D. Sewage and gray water will be safely contained on-site, and then waste will be disposed at an approved off-site facility.
- E. All trash, junk, and other waste materials will be stored in proper containers to prevent dispersal and will be removed to an appropriate facility within one week of cessation of drilling and completion activities.

8. Ancillary Facilities

There are no ancillary facilities within the immediate vicinity of the proposed well site.

9. Well Site Layout

- A. A diagram of the drill pad is shown in Exhibit #5. Dimensions of the pad and location of major rig components are shown.
- B. The pad dimension of 280' x 320' has been staked and flagged.
- C. An archaeological survey has been conducted on the proposed well pad.

10. Plans for Restoration of Surface

- A. Within 90 days of cessation of drilling and completion operations, all equipment not necessary for production operations will be removed. The location will be cleaned of all trash and junk to assure the well site is left as aesthetically pleasing as reasonably possible.
- B. Interim reclamation:
 - i. All areas not needed for production operations will be reclaimed.
 - ii. Caliche will be removed, the land will be recontoured, the top soil from stockpile will be spread over these areas.
 - iii. The disturbed area will be restored by re-seeding during the proper growing season.

- iv. Any additional caliche required for production facilities will be obtained from the area shown in exhibit #6 as interim reclamation.

C. Final Reclamation:

- i. Upon cessation of the proposed operations, if the well is abandoned, all equipment and trash will be removed and taken to a proper facility.
- ii. The location and road surfacing material will be removed and used to patch area lease roads. The entire location will be restored to the original contour as much as reasonable possible. The top soil used for interim reclamation will be spread over the entire location. All restoration work will be completed within 180 days of cessation of activities.

11. Surface Ownership:

Surface ownership is owned by BLM.

12. Other Information:

- A. The primary use of the surface at the location is for grazing of livestock.

13. Operator's Representative:

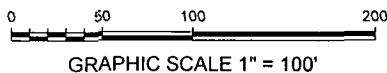
- A. Through APD approval, drilling, completion and production operations:

N.M. Young, District Manager
Mewbourne Oil Company
PO Box 5270
Hobbs, NM 88241
575-393-5905

SITE LOCATION

EXCALIBUR FED 17 LI 1H SHL
 NMSP-E (NAD 83)
 N (Y) = 603603.3'
 E (X) = 738359.6'
 LAT. = 32°39'27.79"N
 LONG. = 103°41'35.33"W

NMSP-E (NAD 27)
 N (Y) = 603540.2'
 E (X) = 697179.9'
 LAT. = 32.6575977°N
 LONG. = 103.6926492°W



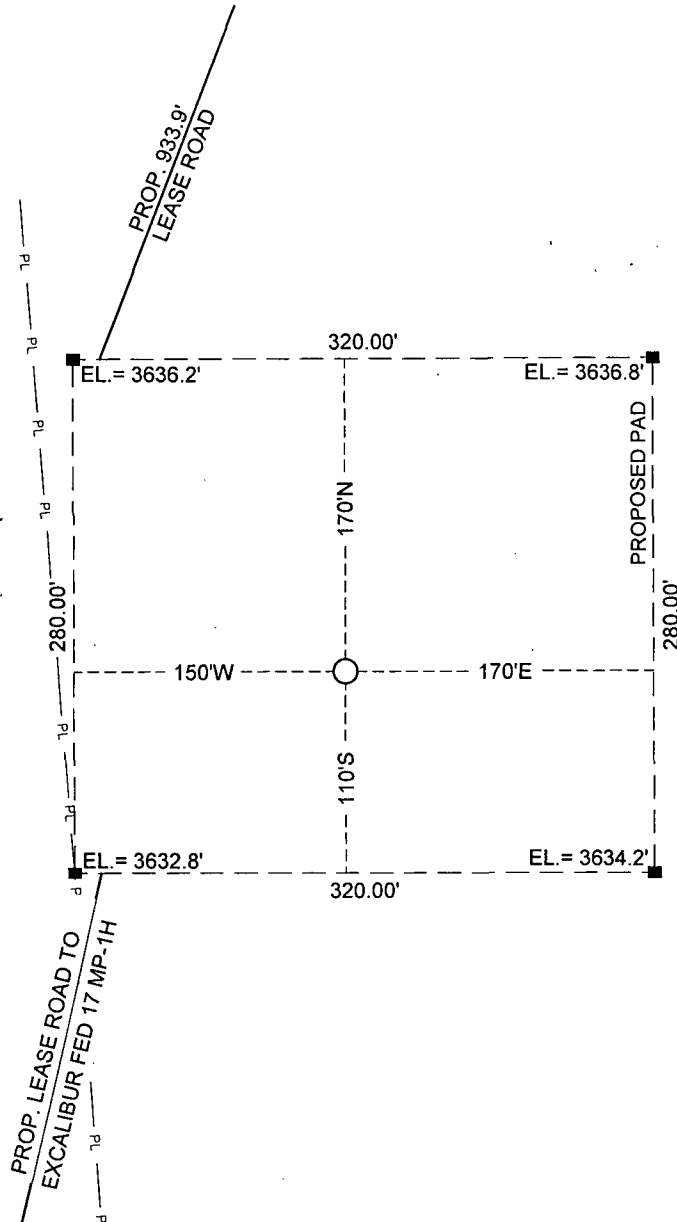
SECTION 17, T 19 S, R 33 E, N.M.P.M.

COUNTY: LEA STATE: NM

DESCRIPTION: 1700' FSL & 210' FWL

OPERATOR: MEWBOURNE OIL COMPANY

WELL NAME: EXCALIBUR FED 17 LI 1H



DRIVING DIRECTIONS:

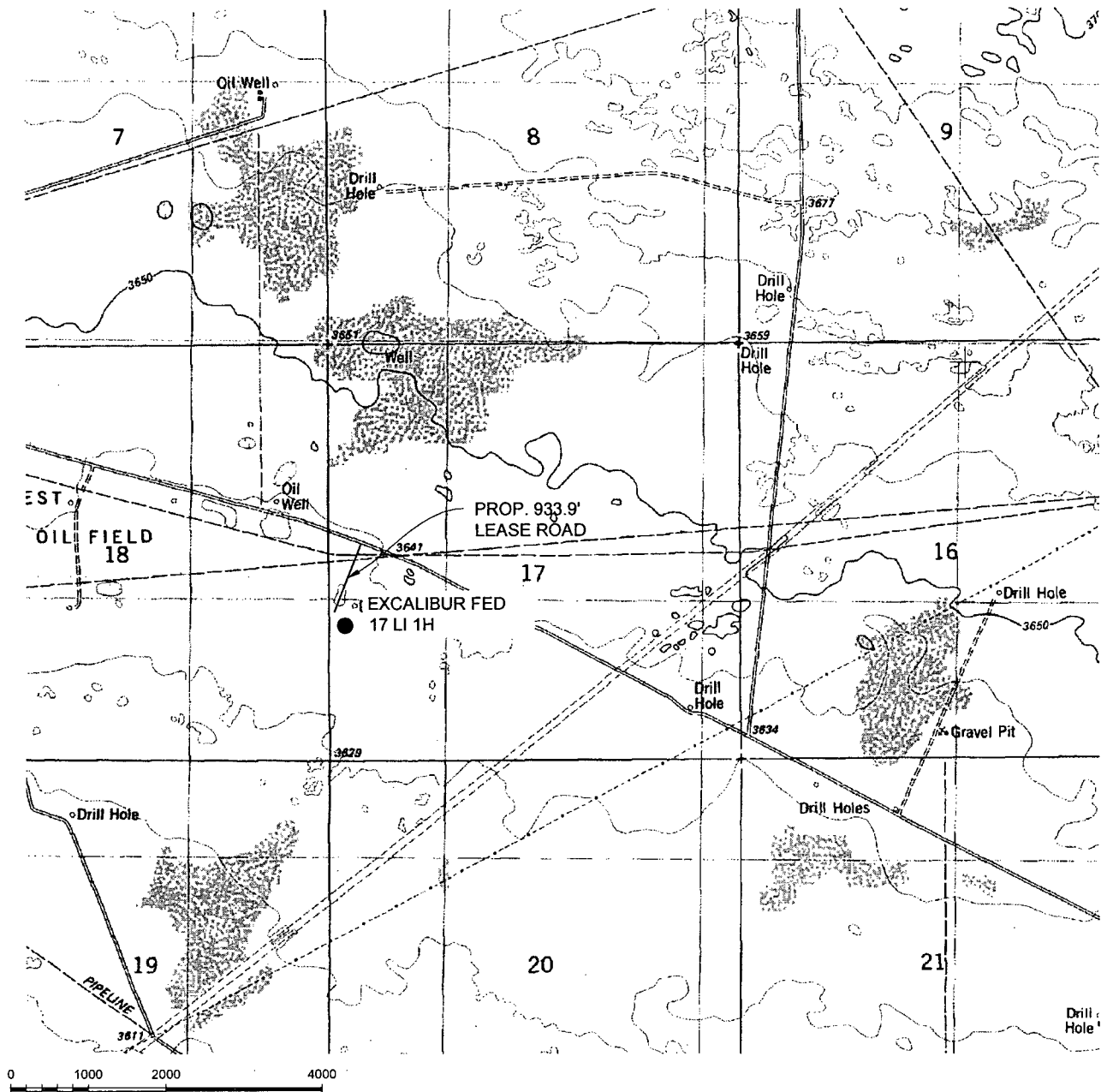
From the intersection of Hwy. 529 and US Hwy. 62, go southwesterly on Hwy. 62 15.9 miles to a lease road right. Go north 0.7 mile and turn right. Go east 0.2 mile and turn left. Go north 0.7 mile and turn left. Go 0.2 mile and turn right. Go north 0.5 mile and turn right. Go east 0.8 mile and turn left. Go northwesterly 5.0 miles. Location is 933 feet southwest.



WEST TEXAS CONSULTANTS, INC.
 ENGINEERS PLANNERS SURVEYORS
 405 S.W. 1st STREET
 ANDREWS, TEXAS 79714
 (432) 523-2181

MEWBOURNE OIL COMPANY

LOCATION VERIFICATION MAP



GRAPHIC SCALE 1" = 2000'

SECTION 17, T 19 S, R 33 E, N.M.P.M.

COUNTY: LEA STATE: NM

DESCRIPTION: 1700' FSL & 210' FWL

OPERATOR: MEWBOURNE OIL COMPANY

WELL NAME: EXCALIBUR FED 17 LI 1H

DRIVING DIRECTIONS:

From the intersection of Hwy. 529 and US Hwy. 62, go southwesterly on Hwy. 62 15.9 miles to a lease road right. Go north 0.7 mile and turn right. Go east 0.2 mile and turn left. Go north 0.7 mile and turn left. Go 0.2 mile and turn right. Go north 0.5 mile and turn right. Go east 0.8 mile and turn left. Go northwesterly 5.0 miles. Location is 933 feet southwest.

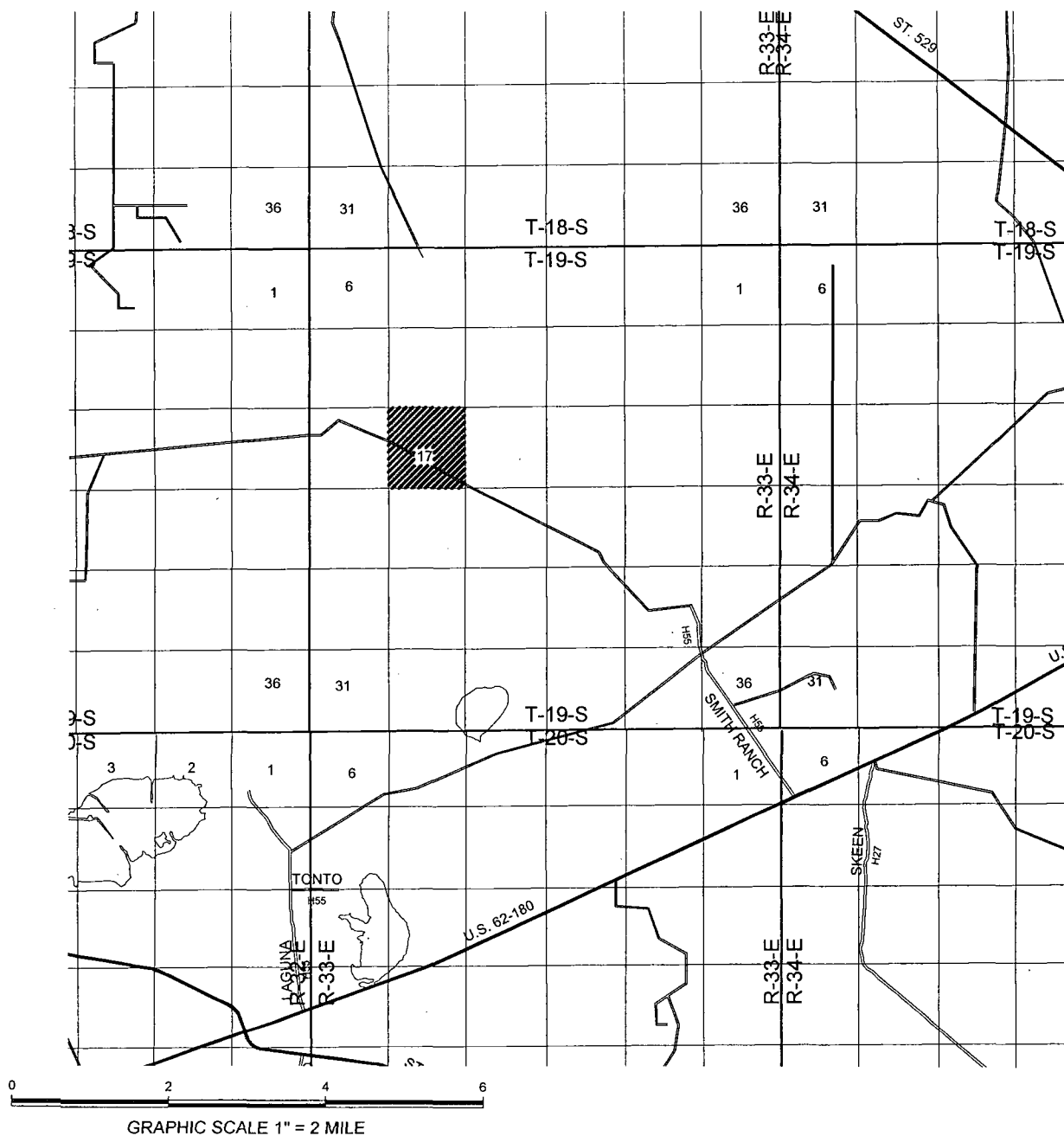


WEST TEXAS CONSULTANTS, INC.
ENGINEERS PLANNERS SURVEYORS
405 S.W. 1st STREET
ANDREWS, TEXAS 79714
(432) 523-2181

MEWBOURNE OIL COMPANY

JOB No.: WTC48971

VICINITY MAP



SECTION 17, T 19 S, R 33 E, N.M.P.M.

COUNTY: LEA STATE: NM

DESCRIPTION: 1700' FSL & 210' FWL

OPERATOR: MEWBOURNE OIL COMPANY

WELL NAME: EXCALIBUR FED 17 LI 1H

DRIVING DIRECTIONS:

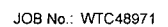
From the intersection of Hwy. 529 and US Hwy. 62, go southwesterly on Hwy. 62 15.9 miles to a lease road right. Go north 0.7 mile and turn right. Go east 0.2 mile and turn left. Go north 0.7 mile and turn left. Go 0.2 mile and turn right. Go north 0.5 mile and turn right. Go east 0.8 mile and turn left. Go northwesterly 5.0 miles. Location is 933 feet southwest.



WEST TEXAS CONSULTANTS, INC.
ENGINEERS PLANNERS SURVEYORS
405 S.W. 1st STREET
ANDREWS, TEXAS 79714
(432) 523-2181

MEWBOURNE OIL COMPANY

JOB No.: WTC48971



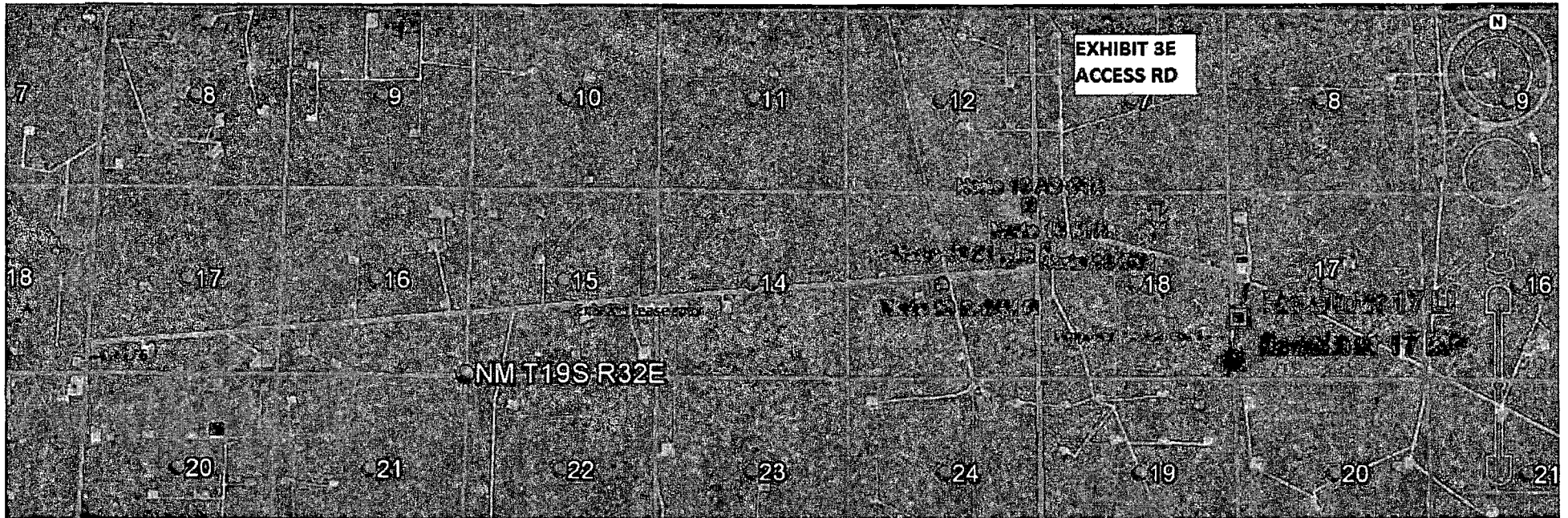
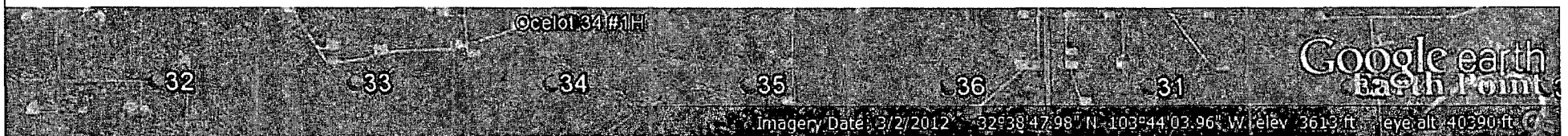


Exhibit 3D - Access Road



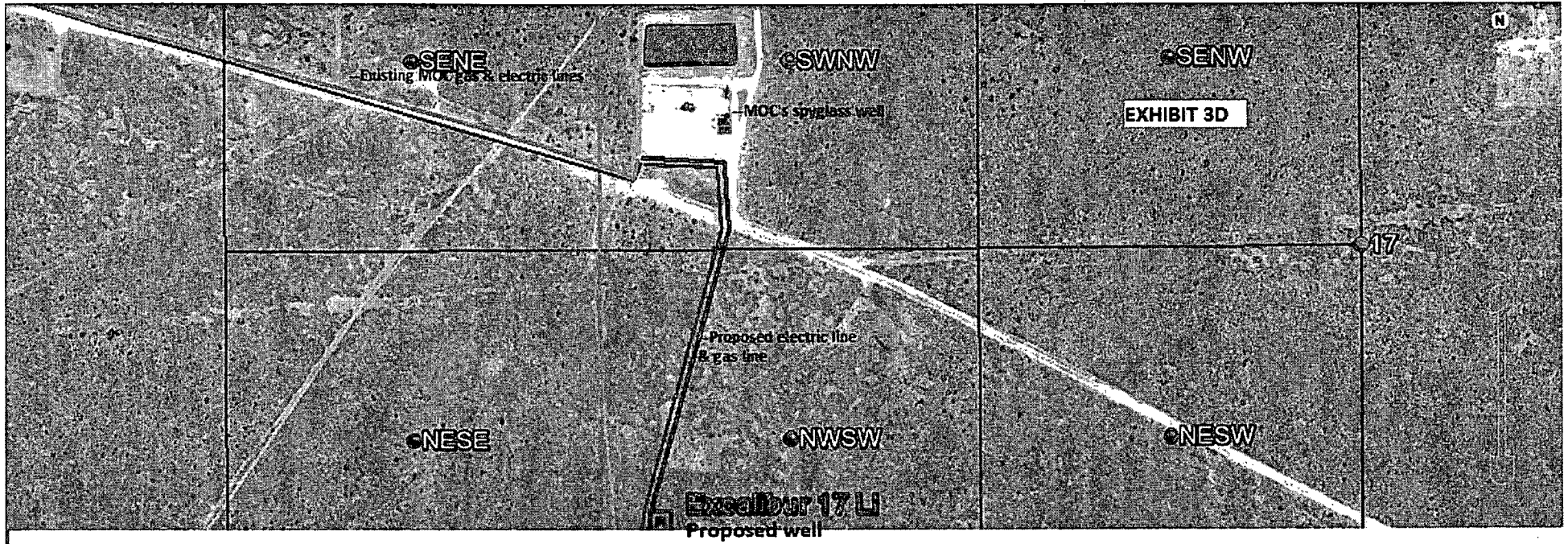


Exhibit - 3E - Proposed gas pipeline and overhead electric line.

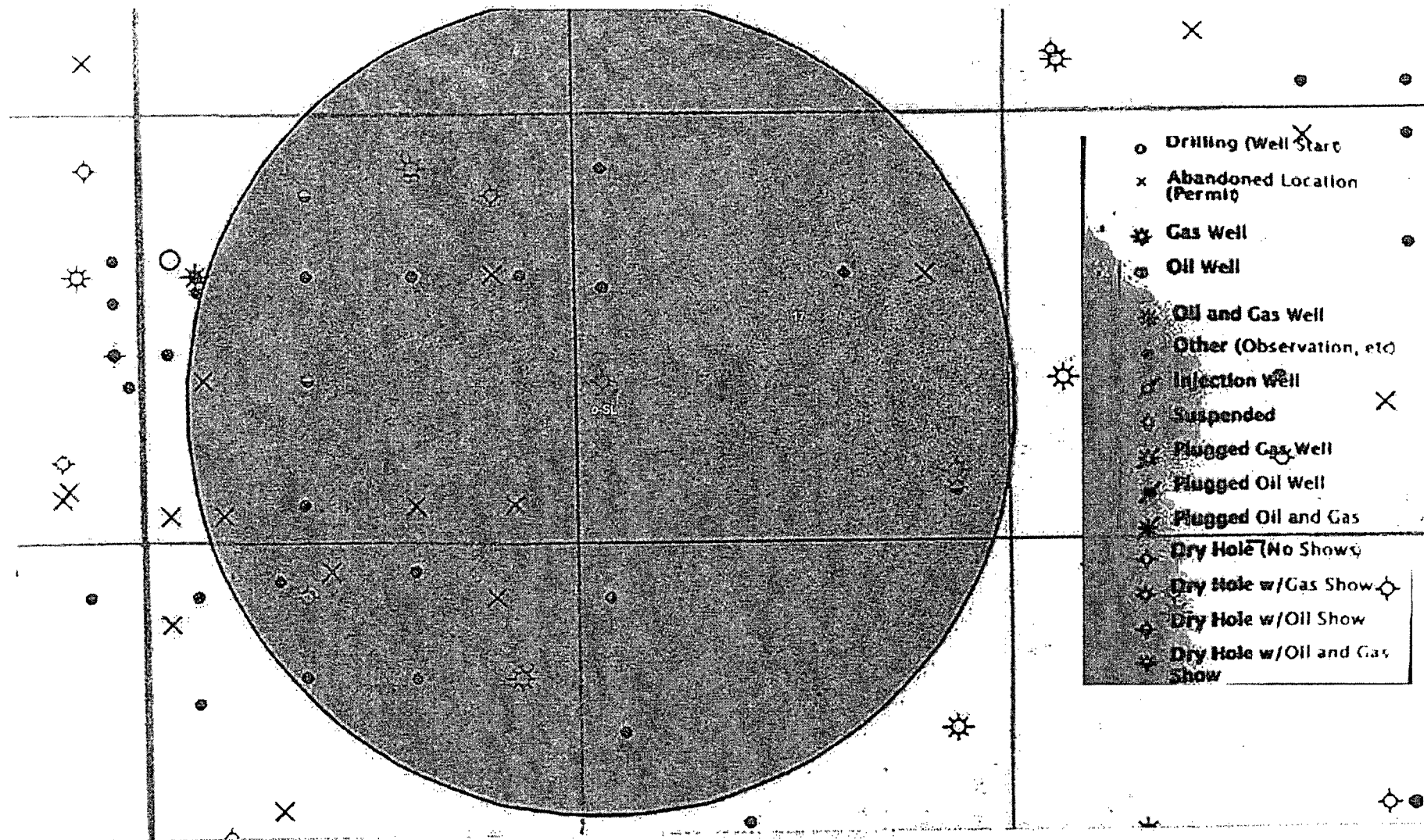


EXHIBIT "4" - SL - Excalibur 17 LI Fed Com #1H - 1700' FSL & 210' FWL, Sec. 17 T19S R33E, Lea County, NM.

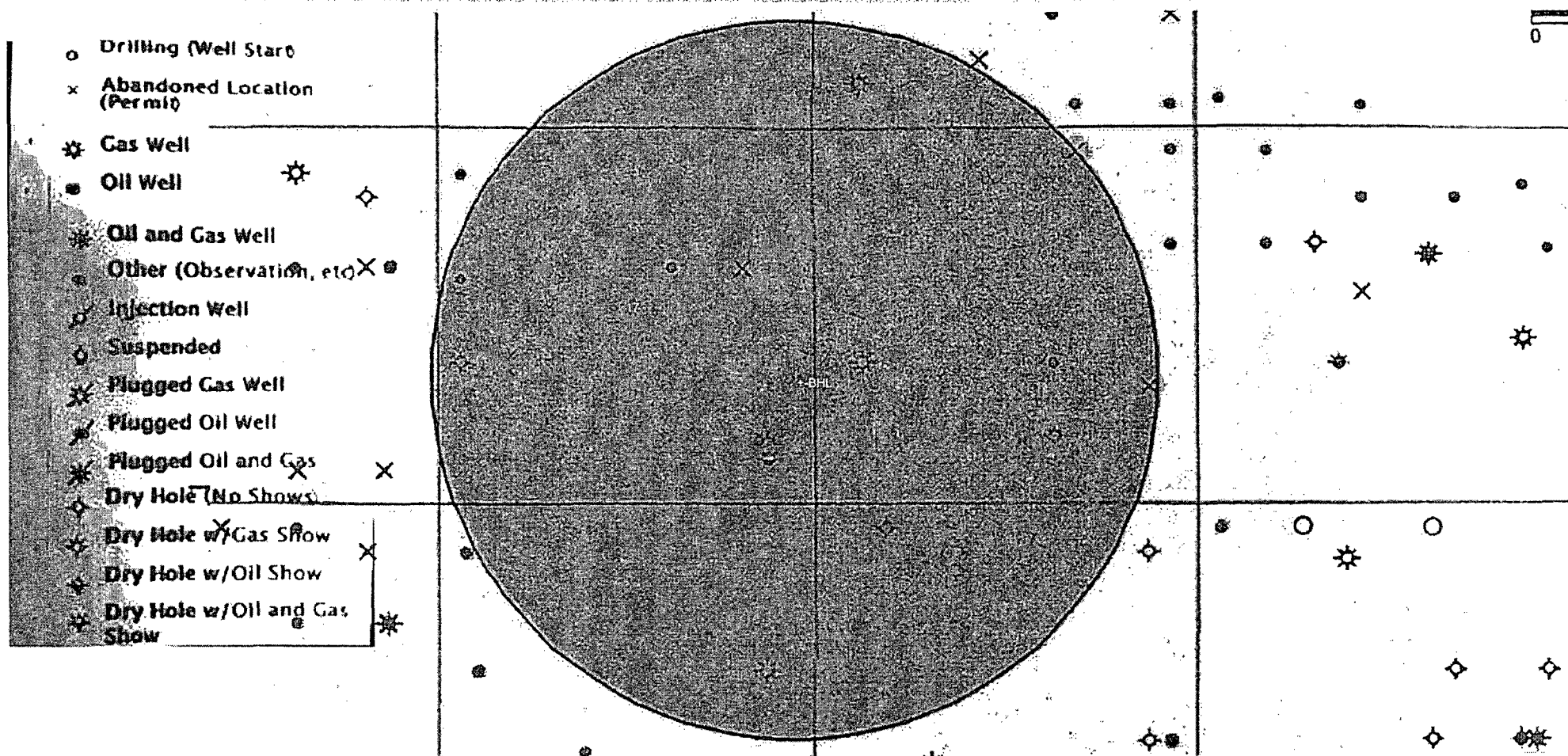


EXHIBIT "4A" - BHL - Excalibur 17 LI Fed Com #1H - 1700' FSL & 330' FEL, Sec. 17 T19S R33E, Lea County, NM