

HOBBS OCD

District I
1625 N. French Dr., Hobbs, NM 88240
Phone: (575) 393-6161 Fax: (575) 393-0720

District II
811 S. First St., Artesia, NM 88210
Phone: (575) 748-1283 Fax: (575) 748-9720

District III
1000 Rio Brazos Road, Aztec, NM 87410
Phone: (505) 334-6178 Fax: (505) 334-6170

District IV
1220 S. St. Francis Dr., Santa Fe, NM 87505
Phone: (505) 476-3460 Fax: (505) 476-3462

State of New Mexico

Form C-102

FEB 26 2014

Minerals & Natural Resources Department

Revised August 1, 2011

OIL CONSERVATION DIVISION

Submit one copy to appropriate

1220 South St. Francis Dr.

District Office

RECEIVED

Santa Fe, NM 87505

☐ AMENDED REPORT**WELL LOCATION AND ACREAGE DEDICATION PLAT**

¹ API Number 30-025-41693	² Pool Code 98064	³ Pool Name WC-025 G-06 S183608B; BS
⁴ Property Code 40427	⁵ Property Name DUNKLE 7 STATE	⁶ Well Number 1H
⁷ OGRID No. 6137	⁸ Operator Name DEVON ENERGY PRODUCTION COMPANY, L.P.	⁹ Elevation 3866.4

¹⁰ Surface Location

UL or lot no.	Section	Township	Range	Lot Idn	Feet from the	North/South line	Feet from the	East/West line	County
4	7	18 S	36 E		200	SOUTH	865	WEST	LEA

¹¹ Bottom Hole Location If Different From Surface

UL or lot no.	Section	Township	Range	Lot Idn	Feet from the	North/South line	Feet from the	East/West line	County
1	7	18 S	36 E		330	NORTH	660	WEST	LEA

¹² Dedicated Acres	¹³ Joint or Infill	¹⁴ Consolidation Code	¹⁵ Order No.
148.28			

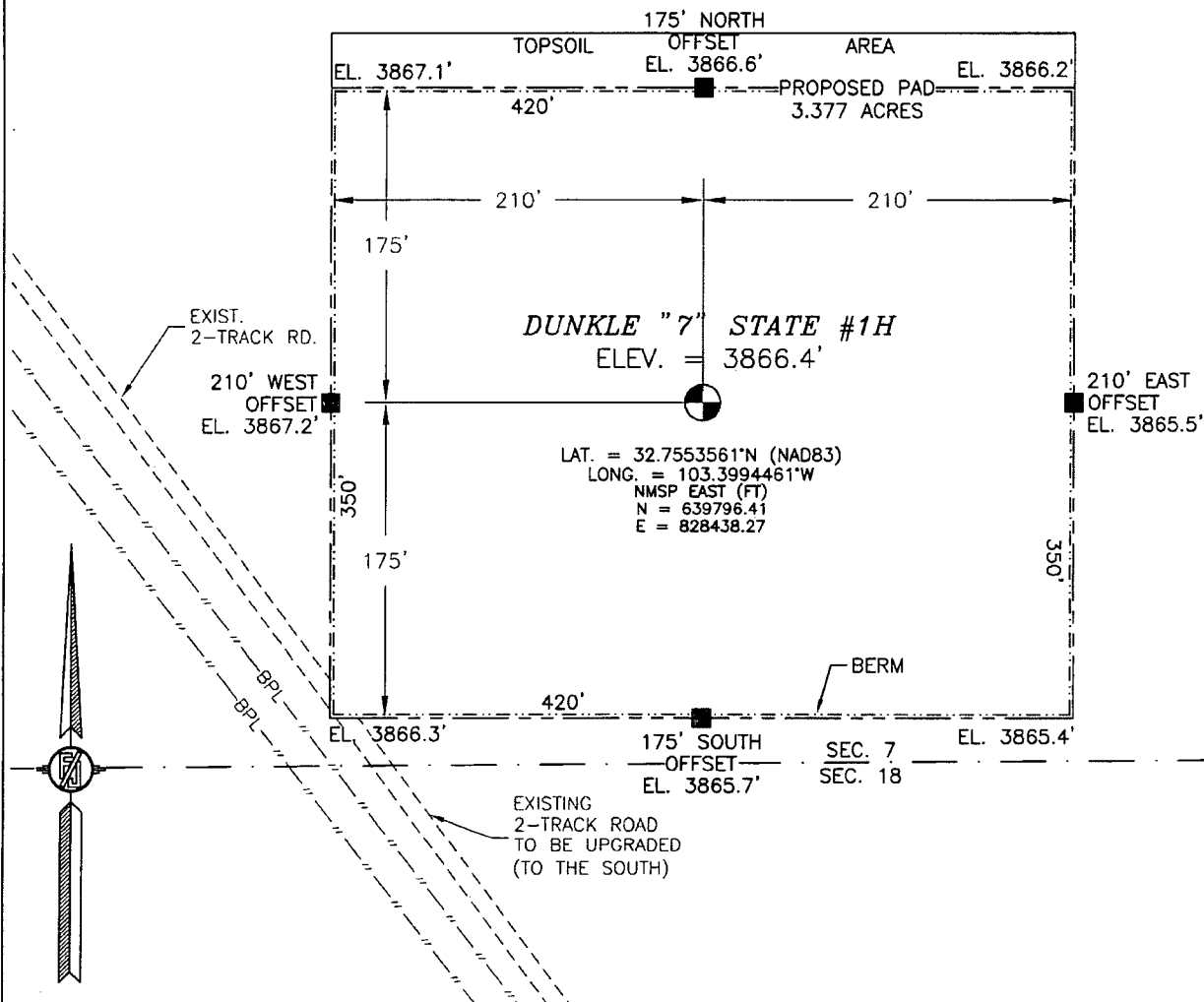
No allowable will be assigned to this completion until all interests have been consolidated or a non-standard unit has been approved by the division.

<p>NOTE: LATITUDE AND LONGITUDE COORDINATES ARE SHOWN USING THE NORTH AMERICAN DATUM OF 1983 (NAD83). LISTED NEW MEXICO STATE PLANE EAST COORDINATES ARE GRID (NAD83). BASIS OF BEARING AND DISTANCES USED ARE NEW MEXICO STATE PLANE EAST COORDINATES MODIFIED TO THE SURFACE.</p>		<p>17 OPERATOR CERTIFICATION I hereby certify that the information contained herein is true and complete to the best of my knowledge and belief, and that this organization either owns a working interest or unleased mineral interest in the land including the proposed bottom hole location or has a right to drill this well at this location pursuant to a contract with an owner of such a mineral or working interest, or to a voluntary pooling agreement or a compulsory pooling order, heretofore entered by the Division.</p> <p>Signature: <i>[Signature]</i> Date: 2/26/2014</p> <p>David H. Cook Regulatory Specialist Printed Name</p> <p>david.cook@dvn.com E-mail Address</p>	
<p>18 SURVEYOR CERTIFICATION I hereby certify that the well location shown on this plat was plotted from field notes of actual surveys made by me or under my supervision, and that the same is true and correct to the best of my belief.</p> <p>FEBRUARY 7, 2014 (12797)</p> <p>Date of Survey</p> <p>Signature and Seal of Professional Surveyor: <i>[Signature]</i></p> <p>Certificate Number: FILIMON F. JARAMILLO, PLS 12797</p> <p>SURVEY NO. 2621</p>		<p>PP: 200 FSL & 660 FWL</p>	

MAR 05 2014

SECTION 7, TOWNSHIP 18 SOUTH, RANGE 36 EAST, N.M.P.M.
LEA COUNTY, STATE OF NEW MEXICO
SITE MAP

NOTE: LATITUDE AND LONGITUDE COORDINATES ARE SHOWN USING THE NORTH AMERICAN DATUM OF 1983 (NAD83). LISTED NEW MEXICO STATE PLANE EAST COORDINATES ARE GRID (NAD83). BASIS OF BEARING AND DISTANCES USED ARE NEW MEXICO STATE PLANE EAST COORDINATES MODIFIED TO THE SURFACE



0 10 50 100 200

SCALE 1" = 100'

DIRECTIONS TO LOCATION

FROM THE INTERSECTION OF US HIGHWAY 62-180 AND NM HIGHWAY 483 AT ARKANSAS JUNCTION GO NORTH ON NM HIGHWAY 483 2.51 MILES JUST PAST SQUIRES ROAD, YOU ARE TURNING INTO AN EXISTING PAD WITH BATTERIES, AT SOUTHWEST CORNER OF PAD IS A CATTLE GUARD, GO WEST 2.15 MILES TO A PIPE LINE FACILITY, ABOUT 50' NORTH IS A GATE, GO NORTH PAST GATE TO ROAD INTERSECTION, TAKE LEFT FORK ALONG NORTH SIDE OF EXISTING PIPE LINE, GO NORTHWEST 1.22 MILES TO SOUTHWEST CORNER OF PAD.

DEVON ENERGY PRODUCTION COMPANY, L.P.

DUNKLE "7" STATE #1H

LOCATED 200 FT. FROM THE SOUTH LINE
AND 865 FT. FROM THE WEST LINE OF
SECTION 7, TOWNSHIP 18 SOUTH,
RANGE 36 EAST, N.M.P.M.
LEA COUNTY, STATE OF NEW MEXICO

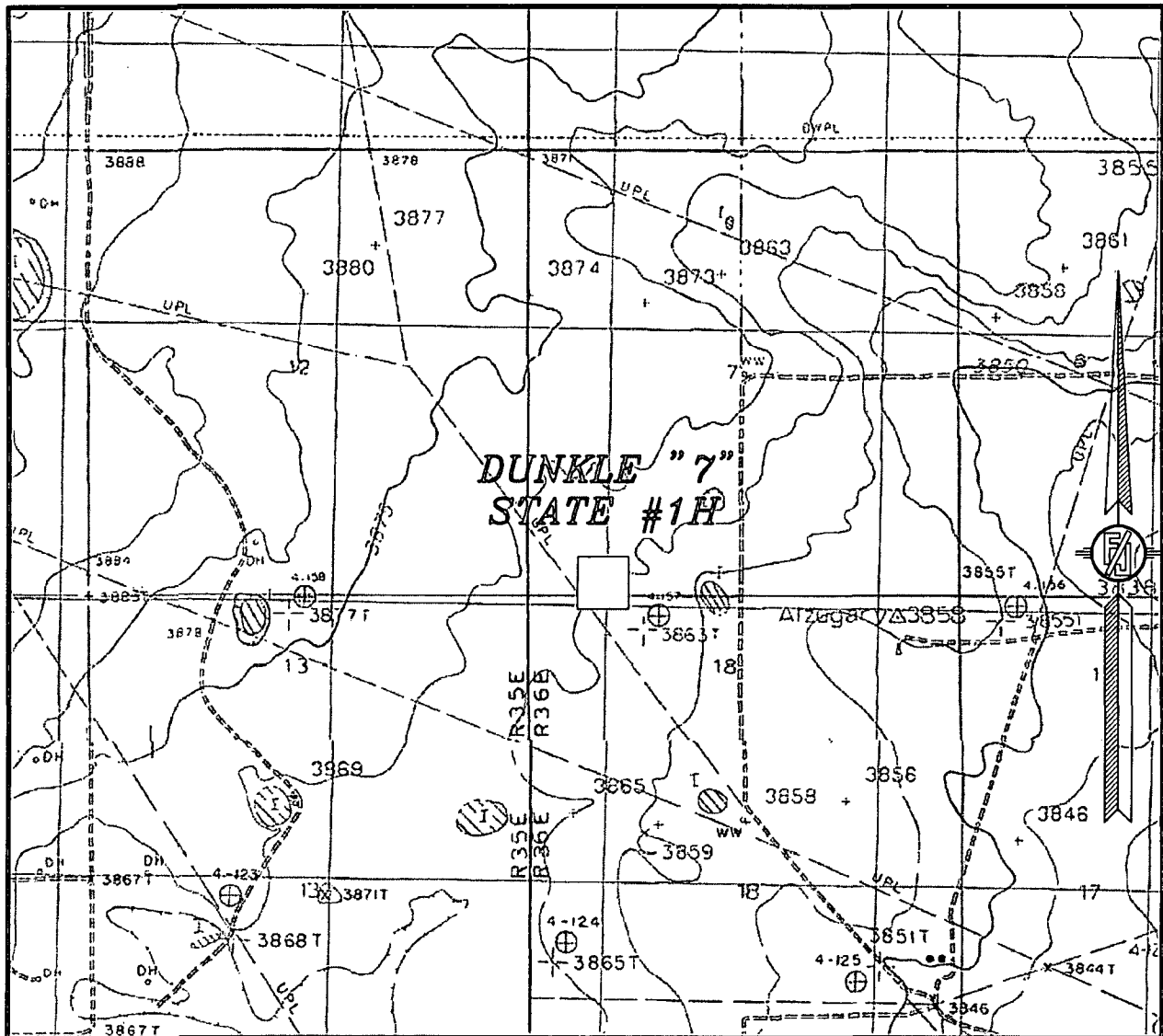
FEBRUARY 7, 2014

SURVEY NO. 2621

MADRON SURVEYING, INC. 301 SOUTH CANAL (575) 234-3341

CARLSBAD, NEW MEXICO

SECTION 7, TOWNSHIP 18 SOUTH, RANGE 36 EAST, N.M.P.M.
LEA COUNTY, STATE OF NEW MEXICO
LOCATION VERIFICATION MAP



USGS QUAD MAP:
LOVINGTON SW

NOT TO SCALE

DEVON ENERGY PRODUCTION COMPANY, L.P.

DUNKLE "7" STATE #1H

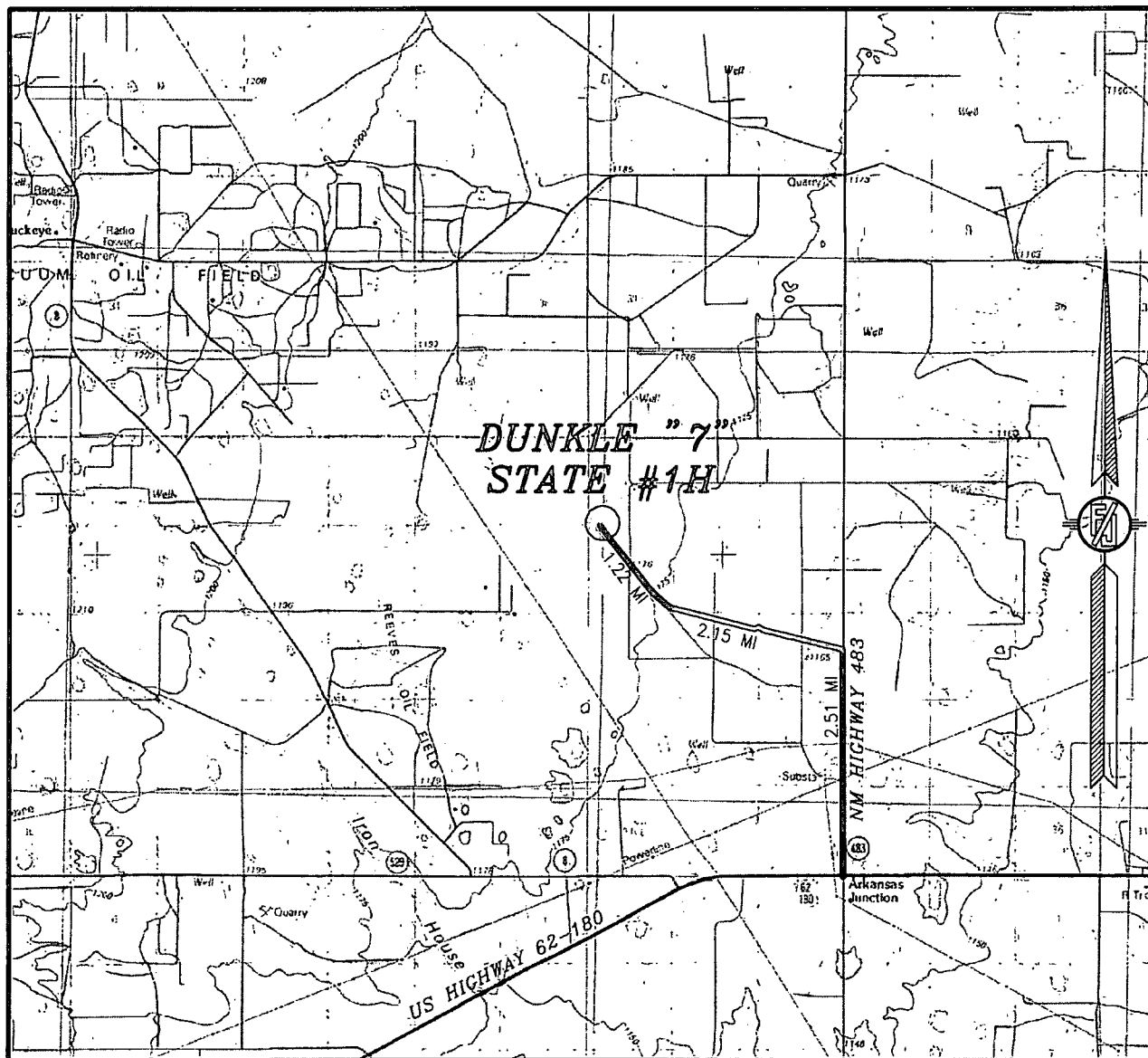
LOCATED 200 FT. FROM THE SOUTH LINE
AND 865 FT. FROM THE WEST LINE OF
SECTION 7, TOWNSHIP 18 SOUTH,
RANGE 36 EAST, N.M.P.M.
LEA COUNTY, STATE OF NEW MEXICO

FEBRUARY 7, 2014

SURVEY NO. 2621

MADRON SURVEYING, INC. 301 SOUTH CANAL (575) 234-3341 CARLSBAD, NEW MEXICO

SECTION 7, TOWNSHIP 18 SOUTH, RANGE 36 EAST, N.M.P.M.
LEA COUNTY, STATE OF NEW MEXICO
VICINITY MAP



NOT TO SCALE

DEVON ENERGY PRODUCTION COMPANY, L.P.

DUNKLE "7" STATE #1H

LOCATED 200 FT. FROM THE SOUTH LINE
AND 865 FT. FROM THE WEST LINE OF
SECTION 7, TOWNSHIP 18 SOUTH,
RANGE 36 EAST, N.M.P.M.
LEA COUNTY, STATE OF NEW MEXICO

FEBRUARY 7, 2014

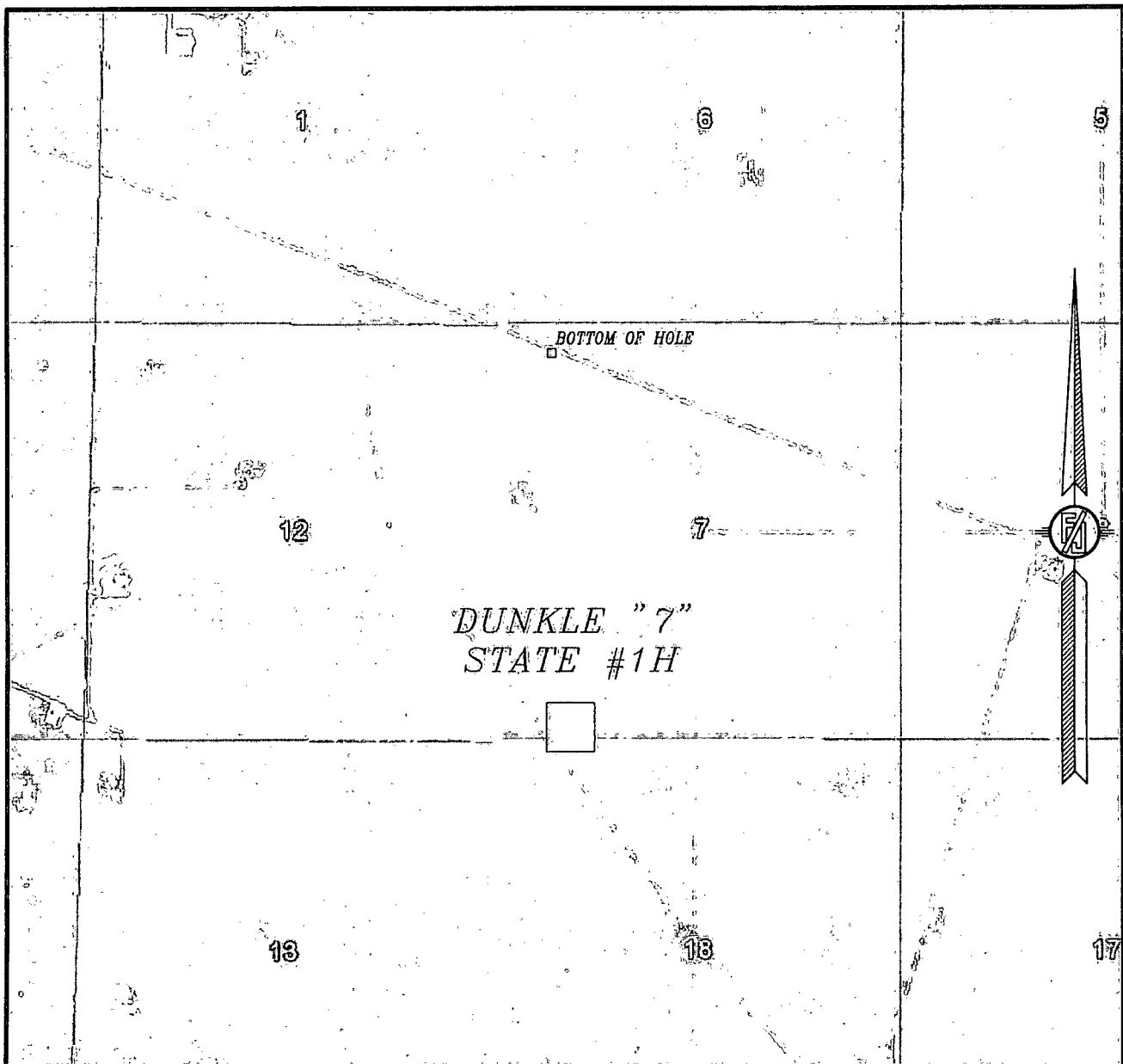
DIRECTIONS TO LOCATION

FROM THE INTERSECTION OF US HIGHWAY 62-180 AND NM HIGHWAY 483 AT ARKANSAS JUNCTION GO NORTH ON NM HIGHWAY 483 2.51 MILES JUST PAST SQUIRES ROAD, YOU ARE TURNING INTO AN EXISTING PAD WITH BATTERIES, AT SOUTHWEST CORNER OF PAD IS A CATTLE GUARD, GO WEST 2.15 MILES TO A PIPE LINE FACILITY, ABOUT 50' NORTH IS A GATE, GO NORTH PAST GATE TO ROAD INTERSECTION, TAKE LEFT FORK ALONG NORTH SIDE OF EXISTING PIPE LINE, GO NORTHWEST 1.22 MILES TO SOUTHWEST CORNER OF PAD.

MADRON SURVEYING, INC. 301 SOUTH CANAL (575) 234-3341

SURVEY NO. 2621
CARLSBAD, NEW MEXICO

SECTION 7, TOWNSHIP 18 SOUTH, RANGE 36 EAST, N.M.P.M.
LEA COUNTY, STATE OF NEW MEXICO
AERIAL PHOTO



NOT TO SCALE
AERIAL PHOTO:
GOOGLE EARTH
MARCH 2012

DEVON ENERGY PRODUCTION COMPANY, L.P.

DUNKLE "7" STATE #1H

LOCATED 200 FT. FROM THE SOUTH LINE
AND 865 FT. FROM THE WEST LINE OF
SECTION 7, TOWNSHIP 18 SOUTH,
RANGE 36 EAST, N.M.P.M.
LEA COUNTY, STATE OF NEW MEXICO

FEBRUARY 7, 2014

SURVEY NO. 2621

MADRON SURVEYING, INC. 301 SOUTH CANAL (575) 234-3341 CARLSBAD, NEW MEXICO