

District I
1625 N. French Dr., Hobbs, NM 88240
Phone: (575) 393-6161 Fax: (575) 393-0720
District II
311 S. First St., Artesia, NM 88210
Phone: (575) 748-1283 Fax: (575) 748-9720
District III
1000 Rio Bruzos Road, Aztec, NM 87410
Phone: (505) 334-6178 Fax: (505) 334-6170
District IV
1220 S. St. Francis Dr., Santa Fe, NM 87505
Phone: (505) 476-3460 Fax: (505) 476-3462

HOBBS OGD State of New Mexico
Energy, Minerals & Natural Resources Department
OIL CONSERVATION DIVISION
FEB 28 2014
1220 South St. Francis Dr.
Santa Fe, NM 87505

Form C-102
Revised August 1, 2011
Submit one copy to appropriate
District Office

☐ AMENDED REPORT

RECEIVED

WELL LOCATION AND ACREAGE DEDICATION PLAT

¹ API Number 30-025-41695	² Pool Code 13155 99930 5183518A;	³ Pool Name W/C-025 G-06 CORBIN; BONE SPRING
⁴ Property Code 39877	⁵ Property Name IRONHOUSE "24" STATE COM	
⁷ OGRID No. 6137	⁸ Operator Name DEVON ENERGY PRODUCTION COMPANY, L.P.	
		⁶ Well Number 3H
		⁹ Elevation 3975.4

¹⁰ Surface Location

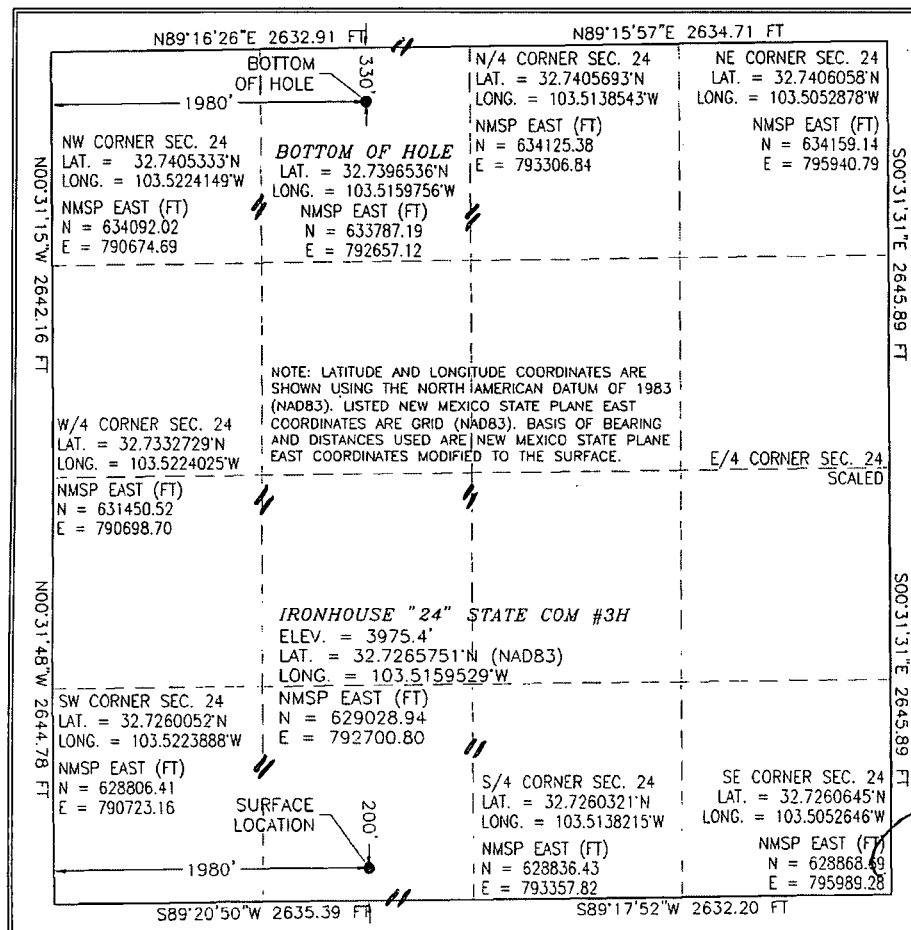
UL or lot no.	Section	Township	Range	Lot Idn	Feet from the	North/South line	Feet from the	East/West line	County
N	24	18 S	34 E		200	SOUTH	1980	WEST	LEA

¹¹ Bottom Hole Location If Different From Surface

UL or lot no.	Section	Township	Range	Lot Idn	Feet from the	North/South line	Feet from the	East/West line	County
C	24	18 S	34 E		330	NORTH	1980	WEST	LEA

¹² Dedicated Acres 160	¹³ Joint or Infill	¹⁴ Consolidation Code	¹⁵ Order No.
---	-------------------------------	----------------------------------	-------------------------

No allowable will be assigned to this completion until all interests have been consolidated or a non-standard unit has been approved by the division.



¹⁷ OPERATOR CERTIFICATION

I hereby certify that the information contained herein is true and complete to the best of my knowledge and belief, and that this organization either owns a working interest or unleased mineral interest in the land including the proposed bottom hole location or has a right to drill this well in this location pursuant to a contract with an owner of such a mineral or working interest, or to a voluntary pooling agreement or a compulsory pooling order heretofore entered by the division.

Signature: *[Signature]* Date: 2/27/2014

David H. Cook Regulatory Specialist
Printed Name

david.cook@dmv.com
E-mail Address

¹⁸ SURVEYOR CERTIFICATION

I hereby certify that the well location shown on this plat was plotted from field notes of actual surveys made by me or under my supervision, and that the same is true and correct to the best of my belief.

JANUARY 23, 2014
Date of Survey

(12797)
Signature and Seal of Professional Surveyor

Certificate Number: FIDELITY F. JARAMILLO, PLS 12797

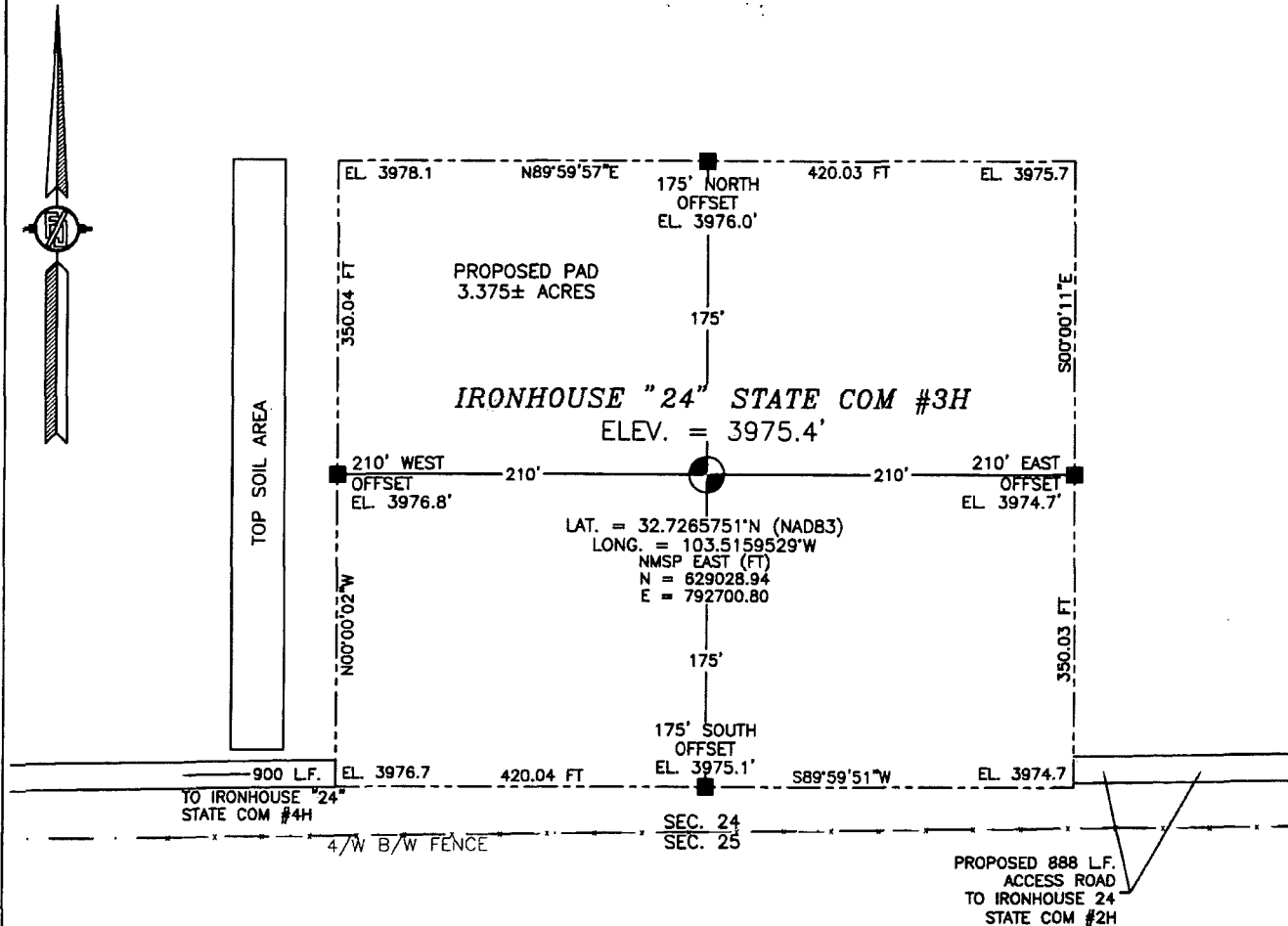
SURVEY NO. 2472A

PP: 200 FSL & 1980 FWL

MAR 05 2014

SECTION 24, TOWNSHIP 18 SOUTH, RANGE 34 EAST, N.M.P.M.
LEA COUNTY, STATE OF NEW MEXICO
SITE MAP

NOTE: LATITUDE AND LONGITUDE COORDINATES ARE SHOWN USING THE NORTH AMERICAN DATUM OF 1983 (NAD83). LISTED NEW MEXICO STATE PLANE EAST COORDINATES ARE GRID (NAD83). BASIS OF BEARING AND DISTANCES USED ARE NEW MEXICO STATE PLANE EAST COORDINATES MODIFIED TO THE SURFACE.



010 50 100 200

SCALE 1" = 100'

DIRECTIONS TO LOCATION

FROM HWY 529 MILE MARKER 23 TURN RIGHT (NORTH) ON LEASE ROAD GO NORTH 0.4 MILES ROAD TURNS RIGHT (EAST) GO 0.5 MILES ROAD TURNS LEFT (NORTH) GO 0.6 MILES ROAD TURNS RIGHT (EAST) GO 0.2 MILES ROAD TURNS LEFT (NORTH) GO 1.0 MILE TO "T" INTERSECTION TURN LEFT (WEST) GO 0.4 MILES TO EXISTING PAD FOR IRONHOUSE "24" STATE COM #1H FROM SW CORNER OF EXISTING PAD GO WEST 0.12 MILES TO IRONHOUSE "24" STATE COM #2H FROM SW CORNER PAD GO WEST 888 FT TO IRONHOUSE "24" STATE COM #3H

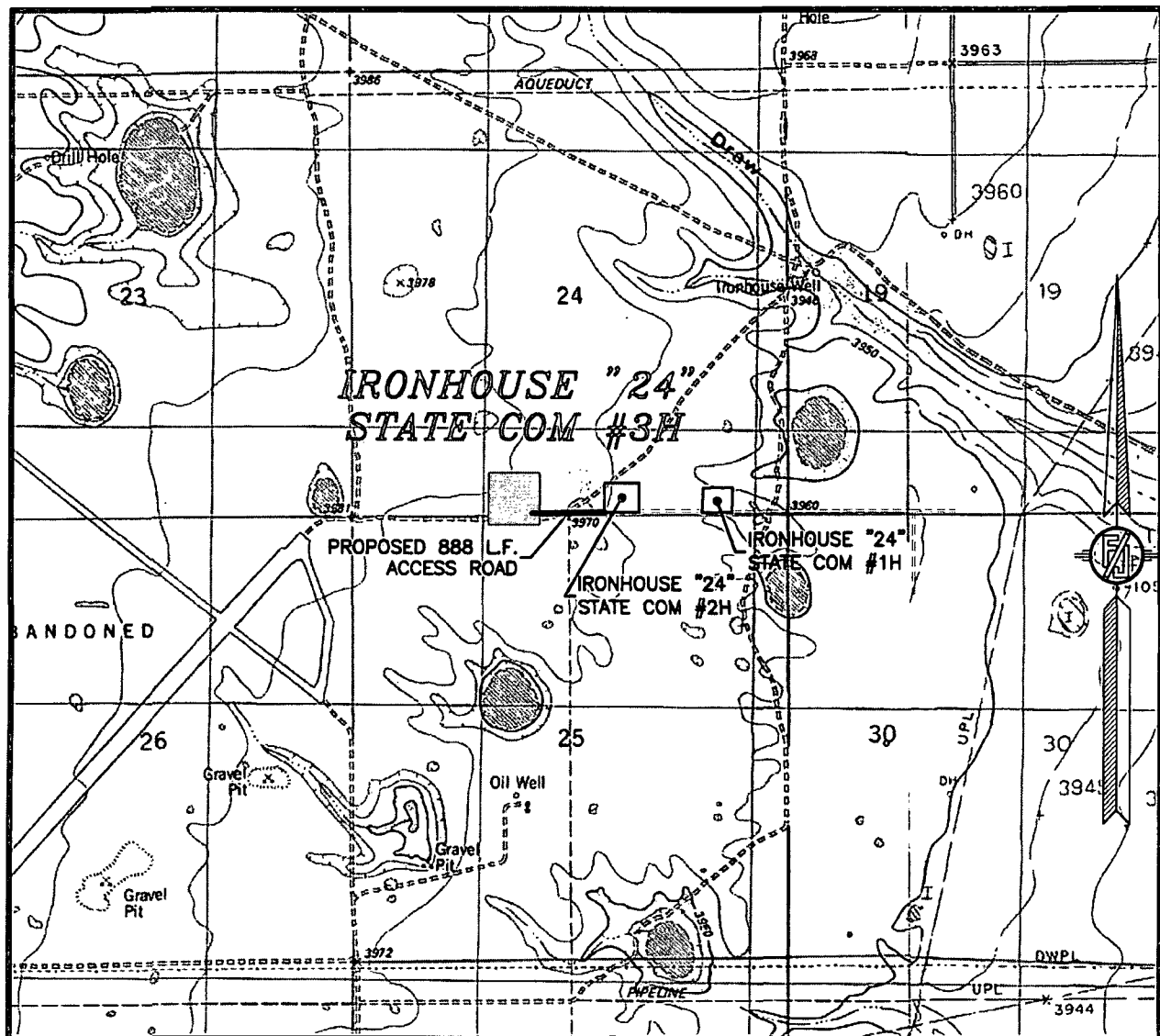
DEVON ENERGY PRODUCTION COMPANY, L.P.
IRONHOUSE "24" STATE COM #3H
LOCATED 200 FT. FROM THE SOUTH LINE
AND 1980 FT. FROM THE WEST LINE OF
SECTION 24, TOWNSHIP 18 SOUTH,
RANGE 34 EAST, N.M.P.M.
LEA COUNTY, STATE OF NEW MEXICO

JANUARY 23, 2014

SURVEY No. 2472A

MADRON SURVEYING, INC. 301 SOUTH CANAL (575) 234-3341 CARLSBAD, NEW MEXICO

SECTION 24, TOWNSHIP 18 SOUTH, RANGE 34 EAST, N.M.P.M.
LEA COUNTY, STATE OF NEW MEXICO
LOCATION VERIFICATION MAP



USGS QUAD MAP:
IRONHOUSE WELL

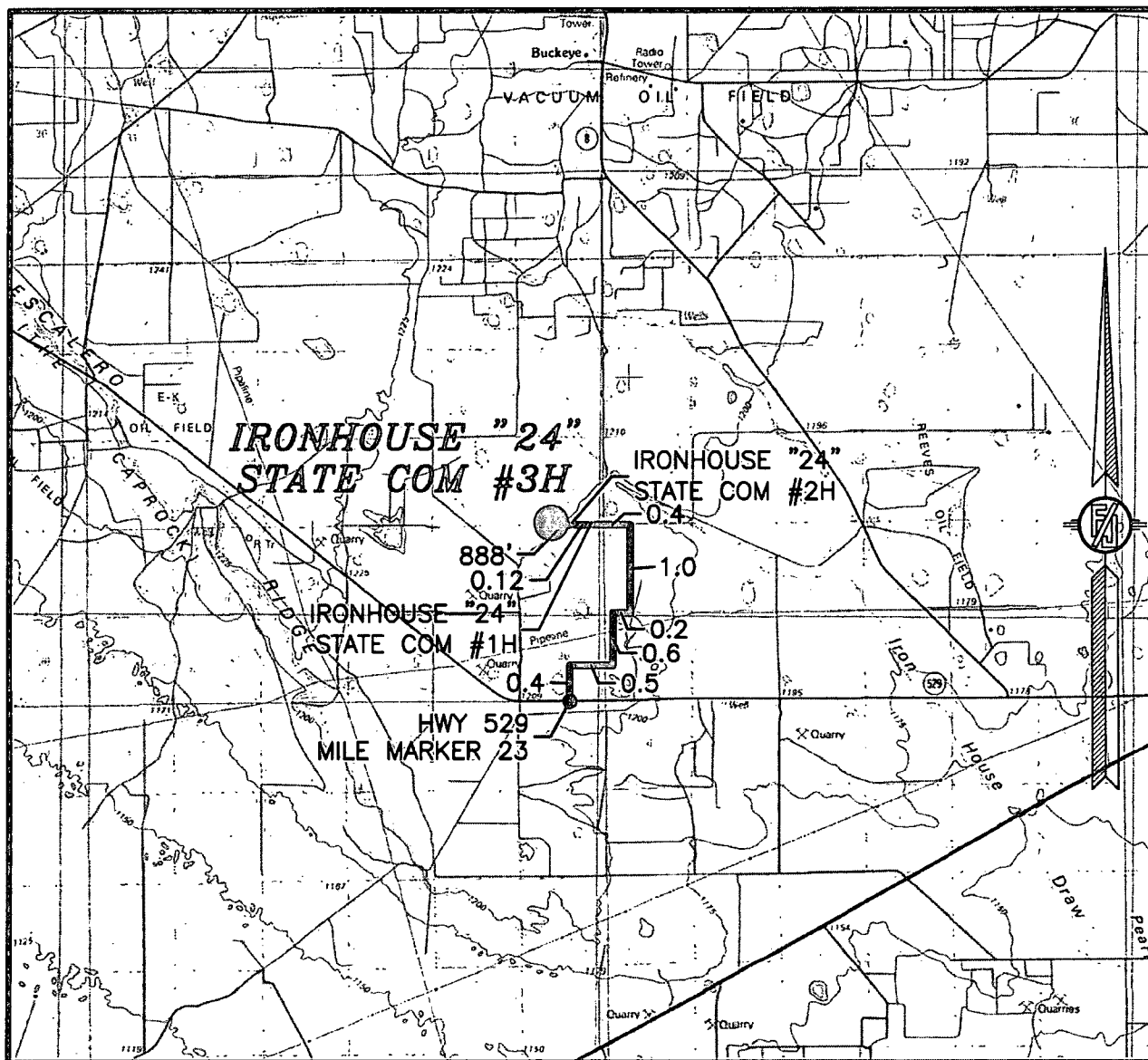
NOT TO SCALE

DEVON ENERGY PRODUCTION COMPANY, L.P.
IRONHOUSE "24" STATE COM #3H
LOCATED 200 FT. FROM THE SOUTH LINE
AND 1980 FT. FROM THE WEST LINE OF
SECTION 24, TOWNSHIP 18 SOUTH,
RANGE 34 EAST, N.M.P.M.
LEA COUNTY, STATE OF NEW MEXICO

JANUARY 23, 2014

MADRON SURVEYING, INC. 301 SOUTH CANAL (575) 234-3341 CARLSBAD, NEW MEXICO
SURVEY NO. 2472A

SECTION 24, TOWNSHIP 18 SOUTH, RANGE 34 EAST, N.M.P.M.
LEA COUNTY, STATE OF NEW MEXICO
VICINITY MAP



DISTANCES IN MILES

NOT TO SCALE

DIRECTIONS TO LOCATION

FROM HWY 529 MILE MARKER 23 TURN RIGHT (NORTH) ON LEASE ROAD GO NORTH 0.4 MILES ROAD TURNS RIGHT (EAST) GO 0.5 MILES ROAD TURNS LEFT (NORTH) GO 0.6 MILES ROAD TURNS RIGHT (EAST) GO 0.2 MILES ROAD TURNS LEFT (NORTH) GO 1.0 MILE TO "T" INTERSECTION TURN LEFT (WEST) GO 0.4 MILES TO EXISTING PAD FOR IRONHOUSE "24" STATE COM #1H FROM SW CORNER OF EXISTING PAD GO WEST 0.12 MILES TO IRONHOUSE "24" STATE COM #2H FROM SW CORNER PAD GO WEST 888 FT TO IRONHOUSE "24" STATE COM #3H

DEVON ENERGY PRODUCTION COMPANY, L.P.

IRONHOUSE "24" STATE COM #3H

LOCATED 200 FT. FROM THE SOUTH LINE
AND 1980 FT. FROM THE WEST LINE OF
SECTION 24, TOWNSHIP 18 SOUTH,
RANGE 34 EAST, N.M.P.M.
LEA COUNTY, STATE OF NEW MEXICO

JANUARY 23, 2014

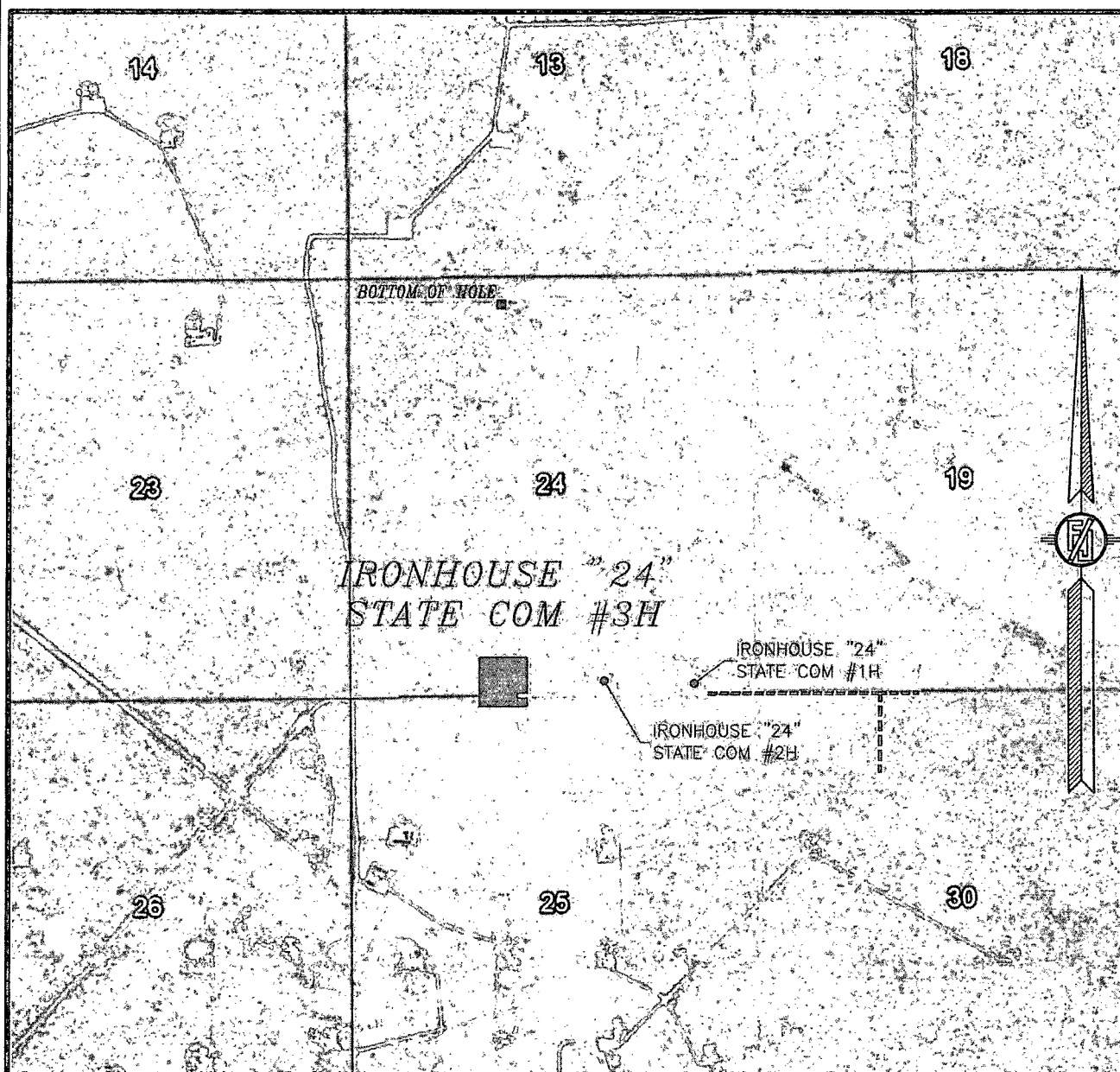
MADRON SURVEYING, INC.

301 SOUTH CANAL
(575) 234-3341

CARLSBAD, NEW MEXICO

SURVEY NO. 2472A

SECTION 24, TOWNSHIP 18 SOUTH, RANGE 34 EAST, N.M.P.M.
LEA COUNTY, STATE OF NEW MEXICO
AERIAL PHOTO



NOT TO SCALE
AERIAL PHOTO:
GOOGLE EARTH
MARCH 2012

DEVON ENERGY PRODUCTION COMPANY, L.P.
IRONHOUSE "24" STATE COM #3H
LOCATED 200 FT. FROM THE SOUTH LINE
AND 1980 FT. FROM THE WEST LINE OF
SECTION 24, TOWNSHIP 18 SOUTH,
RANGE 34 EAST, N.M.P.M.
LEA COUNTY, STATE OF NEW MEXICO

JANUARY 23, 2014

MADRON SURVEYING, INC. 301 SOUTH CANAL (575) 234-3341 CARLSBAD, NEW MEXICO

SURVEY NO. 2472A