

Submit 1 Copy To Appropriate District Office
District I - (575) 393-6161
1025 N. French Dr., Hobbs, NM 88240
District II - (575) 748-1283
811 S. First St., Artesia, NM 88210
District III - (505) 334-6178
1000 Rio Brazos Rd., Aztec, NM 87410
District IV - (505) 476-3460
1220 S. St. Francis Dr., Santa Fe, NM 87505

State of New Mexico
Energy, Minerals and Natural Resources

Form C-103
Revised July 18, 2013

HOBBS OGD

OIL CONSERVATION DIVISION
1220 South St. Francis Dr.
Santa Fe, NM 87505

MAR 06 2014

SUNDRY NOT RECD REPORTS ON WELLS
(DO NOT USE THIS FORM FOR PROPOSALS TO DRILL OR TO DEEPEN OR PLUG BACK TO A DIFFERENT RESERVOIR. USE "APPLICATION FOR PERMIT" (FORM C-101) FOR SUCH PROPOSALS.)

1. Type of Well: Oil Well ☒ Gas Well ☐ Other

2. Name of Operator
CHEVRON U.S.A. INC.

3. Address of Operator
15 SMITH ROAD, MIDLAND, TEXAS 79705

4. Well Location

Unit Letter: E 1830 feet from NORTH line and 660 feet from the WEST line

Section 31 Township 21S Range 37E NMPM County LEA

11. Elevation (Show whether DR, RKB, RT, GR, etc.)

WELL API NO.
30-025-24968

5. Indicate Type of Lease
STATE ☐ FEE ☒

6. State Oil & Gas Lease No.

7. Lease Name or Unit Agreement Name

H.T. MATTERN NCT-B

8. Well Number 19

9. OGRID Number 4323

10. Pool name or Wildcat
BLINEBRY OIL & GAS

12. Check Appropriate Box to Indicate Nature of Notice, Report or Other Data

NOTICE OF INTENTION TO:

PERFORM REMEDIAL WORK ☐ PLUG AND ABANDON ☐
TEMPORARILY ABANDON ☐ CHANGE PLANS ☐
PULL OR ALTER CASING ☐ MULTIPLE COMPL ☐
DOWNHOLE COMMINGLE ☐
CLOSED-LOOP SYSTEM ☐
OTHER:

SUBSEQUENT REPORT OF:

REMEDIAL WORK ☐ ALTERING CASING ☐
COMMENCE DRILLING OPNS. ☐ P AND A ☐
CASING/CEMENT JOB ☐

OTHER: BLINEBRY COMPLETION

13. Describe proposed or completed operations. (Clearly state all pertinent details, and give pertinent dates, including estimated date of starting any proposed work). SEE RULE 19.15.7.14 NMAC. For Multiple Completions: Attach wellbore diagram of proposed completion or recompletion.

PLEASE FIND ATTACHED, REPORTS FOR WORK DONE FROM 11/12/2013 THROUGH 12/17/2013 FOR THE RECOMPLETION TO THE BLINEBRY OIL & GAS RESERVOIR.

PERFS: 5477-5919
2 7/8" TBG SET @ 6037'

12-21-2013: ON 24 HR OPT. PUMPING 40 OIL, 240 GAS, & 190 WATER. GOR-6000

Spud Date:

Rig Release Date:

I hereby certify that the information above is true and complete to the best of my knowledge and belief.

SIGNATURE Denise Pinkerton TITLE REGULATORY SPECIALIST

DATE 03/05/2014

Type or print name DENISE PINKERTON
For State Use Only

E-mail address: leakejd@chevron.com

PHONE: 432-687-7375

APPROVED BY: [Signature] TITLE Petroleum Engineer

DATE MAR 10 2014

Conditions of Approval (if any):

PA Tubbs D+G

MAR 10 2014



Summary Report

Major Rig Work Over (MRWO)
Completion - Reconfigure
Job Start Date: 11/12/2013
Job End Date: 12/17/2013

Well Name MATTERN, H.T. NCT-B 019		Lease Mattern, H.T. NCT-B	Field Name Tubb Oil & Gas	Business Unit Mid-Continent	
Ground Elevation (ft) 3,484.00	Original RKB (ft) 3,498.00	Current RKB Elevation		Mud Line Elevation (ft)	Water Depth (ft)

Report Start Date: 11/12/2013

Com

CREW TRAVEL TO LOCATION

JSA REVIEW
360 DISCOURSED
IFO DISCOURSED
ECOLOR: Y/G
HAZARD OF THE DAY: WIND/BIOLOGICAL
HSE FOCUS OF THE MONTH: HAZARD PRESSURE
TENET OF THE DAY: # 2

MOVE-IN & RIG-UP WORKOVER UNIT,
TEST ELEVATORS & LIFTING EQUIPMENTS
SITP: 65 PSI
SICP: 150 PSI

PUMP 80 BBL HOT WATER TO REMOVE PARAFFIN
PULL RODS AND LAY ON THE GROUND
ROD PULL DETAILS:
1 SPRAY METAL x 26'
1 (1") x 4' ROD-SUB
1 (1") x 8' ROD-SUB
87 (1") x 25' RODS
159 (7/8") x 25' RODS
7 (1 1/2") x 25' K-BARS
1 PUMP x 25'
1 GAS ANCHOR x 15'

ND WELLHEAD
N/U BOP, SET PKR, PRESSURE TEST UPTO 250 PSI LOW AND 1000 PSI HIGH HELD FOR 15 MINUTES EACH TEST.
INSTALLED TIW VALVE AND PULL PLUG TO SECURE WELL

CREW TRAVEL OFF LOCATION

Report Start Date: 11/13/2013

Com

CREW TRAVEL TO LOCATION

JSA REVIEW
360 DISCOURSED
IFO DISCOURSED
ECOLOR: Y/G
HAZARD OF THE DAY: WIND/BIOLOGICAL
HSE FOCUS OF THE MONTH: HAZARD PRESSURE
TENET OF THE DAY: # 3

OPEN VALVES/RAM,
SICP 100 SPI, SITP 0 PSI, BLEED WELL, REMOVE PLUG & TIW.
INSPECT ELEVATORS AND LIFTING DEVICE
RIG-UP SCANNER, POOH WITH 2 7/8 TBG SCANNED AND STAND ON THE DERRICK.
YELLOW BAND: 200
BLUE BAND: 1
TOTAL TBG PULLED: 201, STAND 190 JTS ON DERRICK FOR ACID JOB, LAY DOWN 11 JTS ON THE RACK.

TALLY TBG:
1- KB = 11'
192 JTS 2 7/8 YELLOW BAND = 6062'.84"
1 5-1/2 x 2-7/8 TAC = 2'.70"
8 JTS 2-7/8 YELLOW BAND = 250'.99"
1 JOINT 2-7/8 BLUE BAND = 30'.59"
1 2-7/8 CUP TYPE S/N = 1'.10"
1 2-7/8 PERF SUB = 4'
1 K-99-IPC = 30'.90"
1 2-7/8 MUD JOINT = 31'.71"
1 2-7/8 BULL PLUG = 0.6'

.....END OF TBG AND BHA: 6426'.43".....



Summary Report

Major Rig Work Over (MRWO)
Completion - Reconfigure
Job Start Date: 11/12/2013
Job End Date: 12/17/2013

Well Name MATTERN, H.T. NCT-B 019		Lease Mattern, H.T. NCT-B	Field Name Tubb Oil & Gas	Business Unit Mid-Continent	
Ground Elevation (ft) 3,484.00	Original RKB (ft) 3,498.00	Current RKB Elevation		Mud Line Elevation (ft)	Water Depth (ft)

Com

REVIEW JSA
RIG-UP WIRELINE AND TEST LUBRICATOR TO 1000 PSI
RIH WITH 4.625" GAUGE RING TO 6,160' INSIDE 5-1/2 CSG, GAUGE CLEAR.
RIH WITH 5-1/2 CIBP SET @ 6,110'
LOAD CSG WITH BRINE, TEST CIBP & CSG UPTO 250 PSI LOW 500 PSI HIGH, BOTH HELD FOR MORE THAN 15 MINUTES, CIBP AND CSG HOLD.
RIH WITH DUMP BAILER AND DUMP 35' OF CEMENT, TOP OF CEMENT : 6,070'
POOH WITH DUMP BAILER

SECURE WELL WITH TIW VALVE AND BULL PLUG.
CREW TRAVEL FROM LOCATION

Report Start Date: 11/14/2013

Com

CREW TRAVEL TO LOCATION

JSA REVIEW
360 DISCOURSED
IFO DISCOURSED
ECOLOR: R/G
HAZARD OF THE DAY: PRESSURE/MOTION
HSE FOCUS OF THE MONTH: HAZARD PRESSURE
TENET OF THE DAY: # 4

REVIEW JSA
INSPECT LIFTING DEVICE
OPEN VALVES/RAMS
SICP 0 PSI
SITP 0 PSI
RIH WITH 2-7/8 TBG, 193 JOINTS RUN
END OF TBG 6048'

RIG UP PETROPLEX ACID TRUCK
REVIEW JSA FOR ACID JOB
CIRCULATE WELL WITH BRINE TO ESTABLISH FLOW CIRCULATION
PUMP 1000 GAL OF 10% ACETIC ACID
ABOUT 24 BBL @ THE RATE OF 2 BPM
TOP OF ACID ABOUT 5070'
RIG DOWN PETROPLEX ACID TRUCK

POOH WITH 2-7/8 TBG AND LAY ON THE RACK.
193 TBG PULLED
CLOSED RAMS AND VALVES TO SECURE WELL

CREW TRAVEL OF LOCATION

Report Start Date: 11/15/2013

Com

CREW TRAVEL TO LOCATION

JSA REVIEW
360 DISCOURSED
IFO DISCOURSED
ECOLOR: B/Y
HAZARD OF THE DAY: GRAVITY/MOTION
HSE FOCUS OF THE MONTH: HAZARD PRESSURE
TENET OF THE DAY: # 5
SAFETY SPECIALIST DISCOURSED OTHER INCIDENTS/ ACCIDENTS WITHIN MCBU D & C, FOR SAFETY AWEARNESS.



Summary Report

Major Rig Work Over (MRWO)
Completion - Reconfigure
Job Start Date: 11/12/2013
Job End Date: 12/17/2013

Well Name MATTERN, H.T. NCT-B 019		Lease Mattern, H.T. NCT-B	Field Name Tubb Oil & Gas	Business Unit Mid-Continent	
Ground Elevation (ft) 3,484.00	Original RKB (ft) 3,498.00	Current RKB Elevation		Mud Line Elevation (ft)	Water Depth (ft)

Com

JSA REVIEW FOR PERF JOB
OPEN RAMS/VALVES, SICP 0 PSI

RIG-UP WIRELINE, TEST LUBRICATOR TO 1000 PSI
SET EXCLUSION ZONE AROUND WIRELINE TRUCK WITH FLAG.

RUN GR/CCL TO COLLORATE WITH THE REFERENCE LOG "BAKER ATLAS CBL/GR/CCL 4/12/2006"
TAG TOP OF CEMENT AT 6073'

PERFORATE 14 ZONES IN 13 RUNS WITH 3-1/8 HSC, 2 JSPF, 22 GRAM CHARGED, 37.6inches PENETRATION 120 DEGREE FACING.

NUMBER OF RUNS:

1. 5905-5919 GUN SIZE: 15' NUMBER OF SHOTS = 30
2. 5886-5896 GUN SIZE: 11' NUMBER OF SHOTS = 22
3. 5839-5850 GUN SIZE: 12' NUMBER OF SHOTS = 24
4. 5773-5791 GUN SIZE: 19' NUMBER OF SHOTS = 38
5. 5754-5750 GUN SIZE: 07' NUMBER OF SHOTS = 14
6. 5716-5729 GUN SIZE: 14' NUMBER OF SHOTS = 28
7. 5698-5709 GUN SIZE: 12' NUMBER OF SHOTS = 24
8. 5683-5691 GUN SIZE: 09' NUMBER OF SHOTS = 18
9. 5667-5677 GUN SIZE: 11' NUMBER OF SHOTS = 22
10. 5645-5648 GUN SIZE: 04' NUMBER OF SHOTS = 08
11. 5619-5631 GUN SIZE: 14' NUMBER OF SHOTS = 28
12. 5597-5610 GUN SIZE: 14' NUMBER OF SHOTS = 28
13. 5572-55590 GUN SIZE: 19' NUMBER OF SHOTS = 38
14. 5544-5560 GUN SIZE: 17' NUMBER OF SHOTS = 34

NOTERUN NUMBER 9 & 10 IS 1 RUN WITH 2 GUNS

DETAIL ALSO INPUT IN PERF & STIM SECTION OF WELLVIEW; AS IT WILL APPEAR ON WELLBORE SCHEMATIC

PERFORATION CONTINUE TOMORROW SATURDAY NOVEMBER 16TH 2013;
WE SHUT DOWN DUE TO DARKNESS ON LOCATION.

CLOSE RAMS SECURE WELL FOR THE NIGHT.

CREW TRAVEL OFF LOCATION

Report Start Date: 11/16/2013

Com

CREW TRAVEL TO LOCATION

JSA REVIEW
360 DISCOURSED
IFO DISCOURSED
ECOLOR: R/G
HAZARD OF THE DAY: GRAVITY/MOTION/BIOLOGICAL
HSE FOCUS OF THE MONTH: HAZARD PRESSURE
TENET OF THE DAY: # 6
SAFETY SPECIALIST DISCOURSED OTHER INCIDENTS/ ACCIDENTS WITHIN MCBU D & C, FOR SAFETY AWARENESS.

CHECK WELL PRESSURE, WELL IS ON VACUUM

OPERATION SUSPENDED DUE TO LIGHTENING AND WIND UPTO 35 MPH.



Summary Report

Major Rig Work Over (MRWO)
Completion - Reconfigure
Job Start Date: 11/12/2013
Job End Date: 12/17/2013

Well Name MATTERN, H.T. NCT-B 019		Lease Mattern, H.T. NCT-B	Field Name Tubb Oil & Gas	Business Unit Mid-Continent	
Ground Elevation (ft) 3,484.00	Original RKB (ft) 3,498.00	Current RKB Elevation		Mud Line Elevation (ft)	Water Depth (ft)

Com

JSA REVIEW FOR PERF JOB

OPEN RAMS/VALVES, SICP 0 PSI, WELL IS ON VACUUM.

RIG-UP WIRELINE, TEST LUBRICATOR TO 1000 PSI

SET EXCLUSION ZONE AROUND WIRELINE TRUCK WITH FLAG.

RUN GR/CCL TO COLLORATE WITH THE REFERENCE LOG "BAKER ATLAS CBL/GR/CCL 4/12/2006"

PERFORATE 4 ZONES IN 3 RUNS WITH 3-1/8 HSC, 2 JSPF, 22 GRAM CHARGED, 37.6inches PENETRATION 120 DEGREE FACING.

NUMBER OF RUNS:

1. 5526-5538 GUN SIZE: 09' NUMBER OF SHOTS = 18
2. 5502-5518 GUN SIZE: 18' NUMBER OF SHOTS = 34
3. 5490-5499 GUN SIZE: 10' NUMBER OF SHOTS = 20
4. 5477-5484 GUN SIZE: 08' NUMBER OF SHOTS = 16

NOTERUN NUMBER 3 & 4 IS 1 RUN WITH 2 GUNS

INSPECT ELEVATORS AND LIFTING DEVICE.

LAY DOWN 3-1/2 WORK STRING ON THE RACK,

CHANGE BOP RAM FROM 2-7/8 TO 3-1/2,

TEST BOP 250/1000 PSI, TEST BOP ACCUMULATOR.

HYDROTEST 5-1/2 x 2-7/8 10K ASI-X PACKER WITH 4.5 O.D x 2-7/8 T-2 ON&OFF TOOL WITH 2.25 "F" PROFILE, 2-7/8 BLAST JOINT, 3-1/2 BOX x 2-7/8 PIN CROSS-OVER, UPTO 9000 PSI

RIH WITH 3-1/2 WORK STRING AND HYDROTEST EVERY STAND TO 9000 PSI.

(TOTAL TUBING RUN FOR THE DAY = 50) END OF TUBING (1599.2)'

END OF TUBING + PKR, BLAST JOINT, PROFILE NIPPLE, CROSS-OVER= (1618.19)'

SECURE WELL WITH TIW VALVE AND BULL PLUG.

CREW TRAVEL OFF LOCATION

Report Start Date: 11/18/2013

Com

CREW TRAVEL TO LOCATION

JSA REVIEW

360 DISCOURSED

IFO DISCOURSED

ECOLOR:R/B

HAZARD OF THE DAY: GRAVITY/MOTION/PRESSURE

HSE FOCUS OF THE MONTH: HAZARD PRESSURE

TENET OF THE DAY: # 8

SAFETY SPECIALIST DISCOURSED OTHER INCIDENTS/ ACCIDENTS WITHIN MCBU D & C, FOR SAFETY AWARENESS.

RIH WITH 3-1/2 WORK STRING AND HYDROTEST EVERY STAND TO 9000 PSI

167 JOINTS OF TUBING RUN TO DEPTH OF 5,335.60 WITH (0.45) 3-1/2 x 2-7/8 BOX CROSS OVER, (9.8)' 2-7/8 BLAST JOINT, (1.51)' 2.25 PROFILE WITH ON & OFF TOOL, (7.19)' 5-1/2 x 2-7/8 10K ASI-X PACKER.

PACKER SET @ 5361.59 AND HYDROTEST TO 9000 PSI.

NU 10K FRAC VALVE AND HYDROTEST TO 9000 PSI

RIG DOWN HYDROTEST

NU 10K GOAT HEAD

RIG-UP (WSI) PRESSURE GAUGE AND PRESSURE TEST GOAT HEAD UPTO UPTO 9000 PSI

RIG DOWN (WSI) PRESSURE GAUGE

CLEAR LOCATION

RIG DOWN WORKOVER UNIT

MOVE RIG MOVE FROM H.T MATTERN B # 19 TO M.B WEIR B # 12 AND SPUD.

CREW TRAVEL OFF LOCATION

Report Start Date: 11/22/2013

Com

FRAC CREW TRANSITS TO LOCATION

RIG UP FRAC CREW LINES, TRUCKS AND PUMPS.

DISCOURSED FRAC PROCESS, EXCLUSION ZONES, LINES TESTING, FRAC CREW RESPONSIBILITIES AND FUNCTIONS, EMERGENCY RESPONSE PLANS INCASE OF ANY INCIDENTS OR ACCIDENTS AND ALL GENERAL SAFETY AWARENESS FOR THE OPERATION.



Summary Report

Major Rig Work Over (MRWO)

Completion - Reconfigure

Job Start Date: 11/12/2013

Job End Date: 12/17/2013

Well Name MATTERN, H.T. NCT-B 019		Lease Mattern, H.T. NCT-B	Field Name Tubb Oil & Gas	Business Unit Mid-Continent	
Ground Elevation (ft) 3,484.00	Original RKB (ft) 3,498.00	Current RKB Elevation		Mud Line Elevation (ft)	Water Depth (ft)

Com

TEST LINES TO 8500 PSI POP OFF POP @ 6325 PS, TEST BACK PRESSURE WITH PUMP TRUCK.
OPEN WELL HEAD, WELL ON VACUUM.

START BREAKDOWN.

SPEARHEAD WITH 23 BBL OF 15 % HCL ACID @ 3 BPM STP 2414 PSI
START PAD LINEAR 89 BBL @ 12 BPM STP 2345 PSI
START 1 PPG 100 MESH 120 BBL @ 4422 PSI
START XL PAD 178 BBL @ 39.5 BPM STP 478 PSI
SHUTDOWN LOST VISCOSITY ON HYDRATION 190 BBL @ 39.5 BPM STP 1495 PSI.

START XL PAD

0.5 PPG WHITE SAND 16/30 230 BBL @ 39.3 BPM STP 5200 PSI
1.5 PPG WHITE SAND 16/30 108 BBL @ 39 BPM STP 5394 PSI
2.5 PPG WHITE SAND 16/30 274 BBL @ 38.9 BPM STP 5453 PSI
3.5 PPG WHITE SAND 16/30 288 BBL @ 39.3 BPM STP 4027 PSI
4.5 PPG WHITE SAND 16/30 366 BBL @ 39.5 BPM STP 4118 PSI
5 PPG SLC 618 BBL @ 39.1 BPM STP 4383 PSI
START FLUSH 212 BBL @ 39.1 BPM STP 4655 PSI
SHUT DOWN ISIP 2859 PSI
SHUT-IN PRESSURE:
2859 PSI FOR 5 MINUTE
2489 PSI FOR 10 MINUTE
1942 PSI FOR 15 MINUTE
TREATING PRESSURE
MINIMUM 1946 PSI
MAXIMU 5464 PSI
AVERAGE 3705 PSI
FINAL PRESSURE 1942 PSI

TBG CAPACITY: 49 BBL
PAD VOLUME: 428 BBL
TREATING FLUID: 2047 BBL
FLUSH: 47 BBL
OVER FLUSH: 0 BBL
FLUID TO RECOVER 2785 BBL

MATERIALS PUMPED:

S-8C, SAND, 100 MESH, BULK SSF HOBBS
GBW-5,5-10 lb bg/CARTON 50 lb PALL SSF
HCL, 15 % SSF
EnZyme G-I SSF
ES-4A, DRUM SSF
GW-4LDF SSF
SUPER LC 16/30 SSF
SCALE TROL 720 SSF
NE-23, 55 gl DRUM SSF
FERROTROL 280L, 55 gl DRUM SSF
FRW-18, 260 gl TOTE SSF
ALPHA 114, 265 gl TOTE SSF
ZZXLW-10A (use L488507-330OW) SSF
CLAYCARE, 260 gl TOTE SSF
FLO-BACK 40, 330 gl TOTE SSF
NE-35, 330 gl TOTE SSF
CI-14, 55 gl DRUM SSF
ACTIVATOR, SUPERSET U, 275 gl TOTE SSF

Report Start Date: 11/25/2013

Com

CREW TRAVEL TO LOCATION

JSA REVIEW

360 DISCOURSED
IFO DISCOURSED
ECOLOR:Y/B
HAZARD OF THE DAY: PRESSURE
HSE FOCUS OF THE MONTH: HAZARD PRESSURE
TENET OF THE DAY: # 5



Summary Report

Major Rig Work Over (MRWO)
Completion - Reconfigure
Job Start Date: 11/12/2013
Job End Date: 12/17/2013

Well Name MATTERN, H.T. NCT-B 019		Lease Mattern, H.T. NCT-B	Field Name Tubb Oil & Gas	Business Unit Mid-Continent	
Ground Elevation (ft) 3,484.00	Original RKB (ft) 3,498.00	Current RKB Elevation		Mud Line Elevation (ft)	Water Depth (ft)

Com

OPEN WELL VALVES, MANIFOLD, GAUGE PRESSURE 0 PSI,
"WELL IS NOT FLOWING"
MONITOR WELL FOR 1 HOUR AS ALL VALVES REMAIN OPENED
CALLED ENGINEERS FOR UPDATE,
WELL SHUT-IN VALVES CLOSE, WELL REMAIN SHUT-IN AND SECURED.
FUTURE PLAN;
RIG-UP WORKOVER UNIT AND PUT WELL BACK ON PRODUCTION.

CREW TRAVEL FROM LOCATION

Report Start Date: 12/12/2013

Com

TRAVEL TO LOCATION

SM JSA DISCUSS ROAD SPOT UNLOAD RU PRIMARY UNIT AND EQUIPMENT INSPECT BRAKES CHECK FLUID LEVEL REVIEW PREPOSED ROUTE
OBEY TRAFFIC SIGNS AND SPEED LIMITS BE FAMILIAR WITH SHARP TURNS NARROW CATTLE GUARDS AND HIDDEN OBSTRUCTINS USE
SPOTTER WHEN BACKING STAY CLEAR OF MOVING EQUIPMENT SET UP STRIKE ZONE WHEN UNLOADING TANKS AND SKIDS WHEN RU WATCH
FOR LINES THAT COULD BREAK MONITER HYDRAULIC PRESSURE RAISE DERRICK SLOWLY WATCH CABLE THAT COULD TANGLE AND MAKE
SURE DOG EARS ARE ENGUAED

MOVE RIG AND EQUIPMENT

OFF LOAD EQUIPMENT ND FRAC VALVE Y SPOT RIG

RU PRIMARY UNIT

SPOT EQUIPMENT RU PIPE RACKS AND LINES

PRESSURE TEST BOP 500 PSIG HELD OKAY

BD WELL SITP 250 PSIG KILL WELL WITH 40BBLS BRINE WATER

RD FLOOR ND FRAC VALVE

RELEASE PACKER

SM JSA DISCUSS LD PIPE USE THREE POINT CONTACT WHEN GOING UP AND DOWN STAIRS DO NOT STEP ON LINES CABLES HOSES OR
UNEVEN GROUND KEEP HANDS AND FINGERS CLEAR OF MOVING EQUIPMENT SET UP STRIKE ZONE FOR LD PIPE

LD 3-1/2" TUBING TO 1200'

SECURE WELL AND LOCATION

TRAVEL TO KEY YARD

Report Start Date: 12/13/2013

Com

CREW TRAVEL TO LOCATION

JSA REVIEW
360 DISCOURSED
IFO DISCOURSED
ECOLOR:R/B
HAZARD OF THE DAY: MOTION/PRESSURE
HSE FOCUS OF THE MONTH: WINTER DRIVING
TENET OF THE DAY: # 3

OPEN VALVE, SITP 120 PSI, BLEED DOWN WELL, INSPECT ELEVATORS/SLIPS

TOH WITH 3-1/2 WKR, LAY DOWN ON THE RACK

CHANGE-OUT BOP RAMS FROM 3-1/2 TO 2-7/8

REMOVE 3-1/2 WKR STRING FROM RACKS

LOAD 2-7/8 TBG ON THE RACKS

CHANGE RAMS FROM 3-1/2 TO 2-7/8

PRESSURE TEST BOP WITH PKR 250/500 PSI, HELD EACH FOR 15 MINUTES

CREW BREAK FOR LUNCH

INSPECT ELEVATOR, CHANGE OUT ELEVATOR AND SLIPS
TALLY TBG, TOTAL TBG 200 JOINTS, LENGTH 6307'.55"
RIH WITH 2-7/8 TBG & BIT
TAG @ 5675'
TOTAL TBG RUN TO TAG 180 JOINTS
CALL ENGINEER FOR UPDATES AND VERIFY IF NECESSARY TO "SWAB"

POOH WITH 9 JOINTS OF TBG, LEAVE KILL STRING IN THE HOLE,
BIT HANGING @ 5400' ABOVE THE TOP PERF
WELL SECURED WITH TIW AND BULL PLUG

CREW TRAVEL OFF LOCATION

Report Start Date: 12/14/2013

Com

CREW TRAVEL TO LOCATIPON



Summary Report

Major Rig Work Over (MRWO)

Completion - Reconfigure

Job Start Date: 11/12/2013

Job End Date: 12/17/2013

Well Name MATTERN, H.T. NCT-B 019		Lease Mattern, H.T. NCT-B	Field Name Tubb Oil & Gas	Business Unit Mid-Continent	
Ground Elevation (ft) 3,484.00	Original RKB (ft) 3,498.00	Current RKB Elevation		Mud Line Elevation (ft)	Water Depth (ft)

Com

JSA REVIEW

360 DISCOURSED

IFO DISCOURSED

ECOLOR:Y/G

HAZARD OF THE DAY: MOTION/GRAVITY

HSE FOCUS OF THE MONTH: WINTER DRIVING

TENET OF THE DAY: # 4

OPEN RAMS/VALVES, SITP 0 PSI, SICP 0 SPI, WELL ON VACUUM.

INSPECT ELAVATORS SAND SLIPS

RIG-UP AIRFOAM UNIT

UNLOAD WELL WITH AIRFOAM AND BRINE; FOAMER 5 GPM PLUS BRINE 27 GPM.

WELL UNLOAD AT 1200 PSI, BLEED DOWN TBG PRESSURE AND KEEP 100 PSI BACK PRESSURE.

RIH WITH TBG/BIT AND TAG 5675'

RIG-UP POWER SWEVIL

CLEAN-OUT FILLS FROM 5675'-6084'

FLUSH WITH 500 PSI OF FLUSHING PRESSURE

CIRCULATED HOLE CLAN

SHUT DOWN AIRFOAM UNIT TO OBSERVE WELL FOR INFLOW.

WELL FLOWING, ALLOWED WELL TO FLOW FOR 1/2 HOUR,

TIH WITH 10 STAND, BIT HANGING AT 5431' ABOVE TOP PERF

WELL-SHUT SECURE WELL WITH CHECK VALVE, TIW AND BULL PLUG.

HAUL OFF 260 BBL OF WASTE FLUID FROM BLOW DOWN TANK FOR DISPOSAL.

"NOTE"...TOTAL FLUID RECOVERED 260 BBL, MIXTURE OF OIL, WATER & FOAM...

.....TOTAL FLUID PUMPED 150 BBL.....

CREW TRAVEL OFF LOCATION

Report Start Date: 12/16/2013

Com

CREW TRAVEL TO LOCATION

JSA REVIEW

360 DISCOURSED

IFO DISCOURSED

ECOLOR:B/R

HAZARD OF THE DAY: MOTION/GRAVITY/PRESSURE

HSE FOCUS OF THE MONTH: WINTER DRIVING

TENET OF THE DAY: # 6

OPEN VALVES, GAUGES, SICP 800 PSI, SITP 500 PSI, BLEED WELL DOWN FOR 1/2 HOUR

INSPECT ELEVATORS.SLIPS

RIH WITH TBG AND TAG AT 6084' NO FILL

CONTACT ENGINEER IF NECESSARY TO SWAB

WAITING ON ENGINEER RESPONSE

AFTER 30 MINUTES, ENGINEER RECOMMEND NOT TO SWAB AND RUN PRODUCTION.

BLEED WELL DOWN

KILL WELL WITH 20 BBL OF BRINE

TOH WITH TBG/BIT AND STAND TBG ON THE DERRICK



Summary Report

Major Rig Work Over (MRWO)
Completion - Reconfigure
Job Start Date: 11/12/2013
Job End Date: 12/17/2013

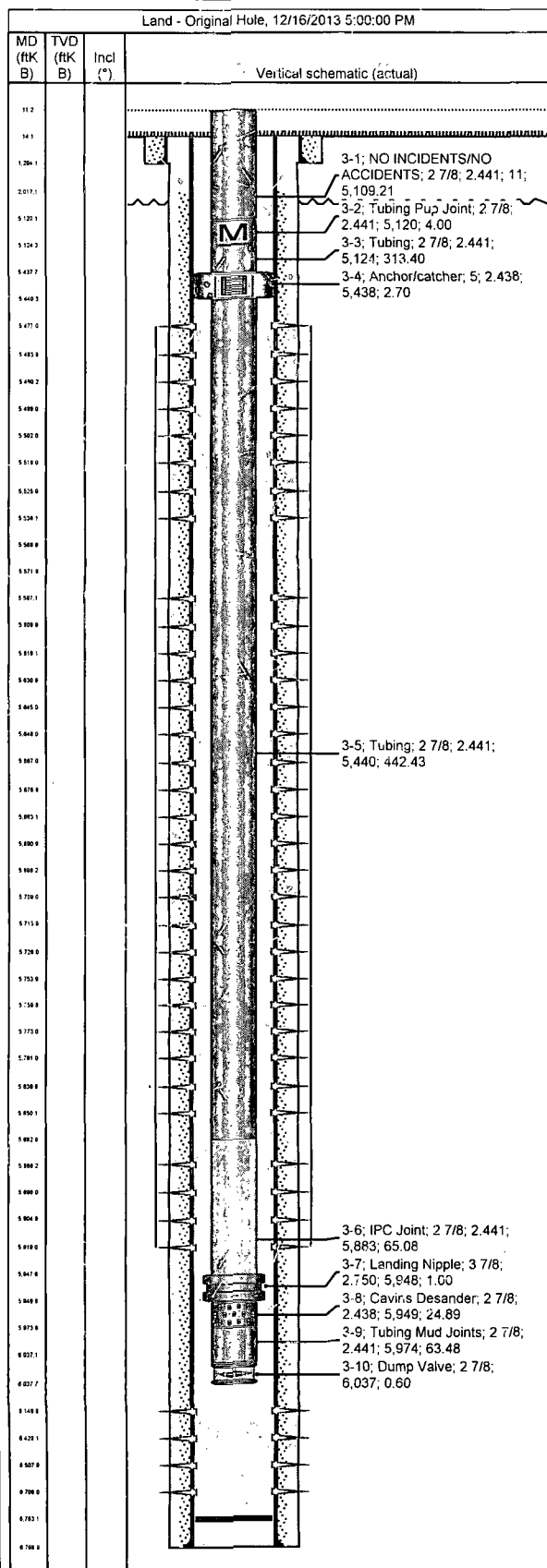
Well Name MATTERN, H.T. NCT-B 019		Lease Mattern, H.T. NCT-B	Field Name Tubb Oil & Gas	Business Unit Mid-Continent	
Ground Elevation (ft) 3,484.00	Original RKB (ft) 3,498.00	Current RKB Elevation		Mud Line Elevation (ft)	Water Depth (ft)

Com
CLEAN RODS & RUN RODS ROD SPACING 10"-12" SET PUMP @ 5945' LOAD WELL AND TEST PUMP; 3 STROKE PER MINUTE @ 600 PSI LOAD TBG WITH 17 BBL AND BACK SIDE WITH 60 BBL OF BRINE ...NOTE.... TOTAL OF 219 RODS RUN..... ROD DETAIL: 1; 1-1/2 POLISH ROD ; LENGTH 26' 3 -1" D-78 SUBS; 8',4',4' TOTAL LENGTH 16' 81 -1" RODS D-78 S.H TEE ; LENGTH 2025' 138 -7/8 RODS D-78 S.H TEE ; LENGTH 3450' 16 -1-1/2 K-BARS S.H.S.M ; LENGTH 400' 1 -7/8 GUIDE SUB D-78 S.H.S.M ; LENGTH 4' 1 -1-3/4 PUMP ; LENGTH 24' PUMP SET @ 5945' STOP WORK TO DISCOURSED SAFETY CONCERN AND SAFE WORK PACE. NOTE..... FINAL REPORT..... RIG DOWN WORKOVER UNIT AND MOVED TO H.T MATTERN B# 25 NOTE..... FINAL REPORT..... CREW TRAVEL OFF LOCATION NOTE..... FINAL REPORT..... NO ACTIVITY



Tubing Summary

Well Name MATTERN, H.T. NCT-B 019	Lease Mattern, H.T. NCT-B	Field Name Tubb Oil & Gas	Business Unit Mid-Continent
Ground Elevation (ft) 3,484.00	Original RKB Elevation (ft) 3,498.00	Current RKB Elevation	Mud Line Elevation (ft) Water Depth (ft)
Current KB to Ground (ft)	Current KB to Mud Line (ft)	Current KB to Csg Flange (ft)	Current KB to Tubing Head (ft)



Tubing Strings									
Tubing Description Tubing		Planned Run? N		Set Depth (MD) (ftKB) 6,037.8		Set Depth (TVD) (ftKB)			
Run Date 12/16/2013		Run Job Completion - Reconfigure, 11/12/2013 05:00		Pull Date		Pull Job Completion - Reconfigure, 11/12/2013 05:00			
Jts	Item Des	OD (in)	ID (in)	Wt (lb/ft)	Grade	Top Thread	Len (ft)	Top (ftKB)	Btm (ftKB)
162	NO INCIDENTS /NO ACCIDENT S	2 7/8	2.441	6.50	J-55	8RD	5,109.21	11.0	5,120.2
1	Tubing Pup Joint	2 7/8	2.441	6.50	J-55	8RD	4.00	5,120.2	5,124.2
10	Tubing	2 7/8	2.441	6.50	J-55	8RD	313.40	5,124.2	5,437.6
1	Anchor/catcher	5	2.438	6.50		8RD	2.70	5,437.6	5,440.3
14	Tubing	2 7/8	2.441	6.50	J-55	8RD	442.43	5,440.3	5,882.7
2	IPC Joint	2 7/8	2.441	6.50	J-55	8RD	65.08	5,882.7	5,947.8
1	Landing Nipple	3 7/8	2.750	6.50	110	8RD	1.00	5,947.8	5,948.8
1	Cavin's Desander	2 7/8	2.438	6.50	J-55	8RD	24.89	5,948.8	5,973.7
2	Tubing Mud Joints	2 7/8	2.441	6.50	J-55	8RD	63.48	5,973.7	6,037.2
1	Dump Valve	2 7/8				8RD	0.60	6,037.2	6,037.8

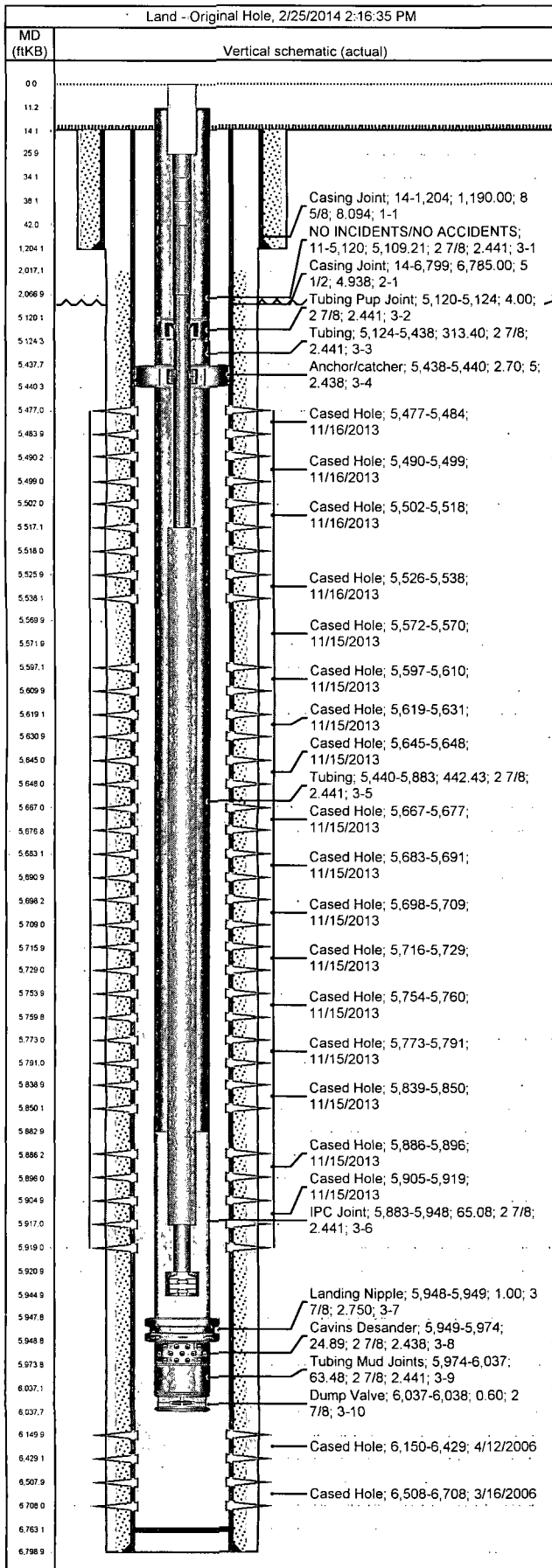
Rod Strings			
Rod Description Polished Rod	Planned Run? N	Set Depth (ftKB) 5,945.0	Set Depth (TVD) (ftKB)
Run Date 12/17/2013	Run Job	Pull Date	Pull Job

Rod Components							
Jts	Item Des	OD (in)	Grade	Model	Len (ft)	Top (ftKB)	Btm (ftKB)
1	Polished Rod	1 1/2		Sprayloy	26.00	0.0	26.0
1	Pony Rod	1	D-78		8.00	26.0	34.0
1	Pony Rod	1	D-78		4.00	34.0	38.0
1	Pony Rod	1	D-78	Grade 78	4.00	38.0	42.0
81	Sucker Rod	1	D-78	Grade 78	2,025.00	42.0	2,067.0
138	Sucker Rod	7/8	D-78	Grade 78	3,450.00	2,067.0	5,517.0
16	Sinker Bar	1 1/2	SHSM		400.00	5,517.0	5,917.0
1	Guided Pony	7/8	D-78		4.00	5,917.0	5,921.0
1	Rod Insert Pump	1 3/4			24.00	5,921.0	5,945.0



Wellbore Schematic

Well Name MATTERN, H.T. NCT-B 019	Lease Mattern, H.T. NCT-B	Field Name Tubb Oil & Gas	Business Unit Mid-Continent
--------------------------------------	------------------------------	------------------------------	--------------------------------

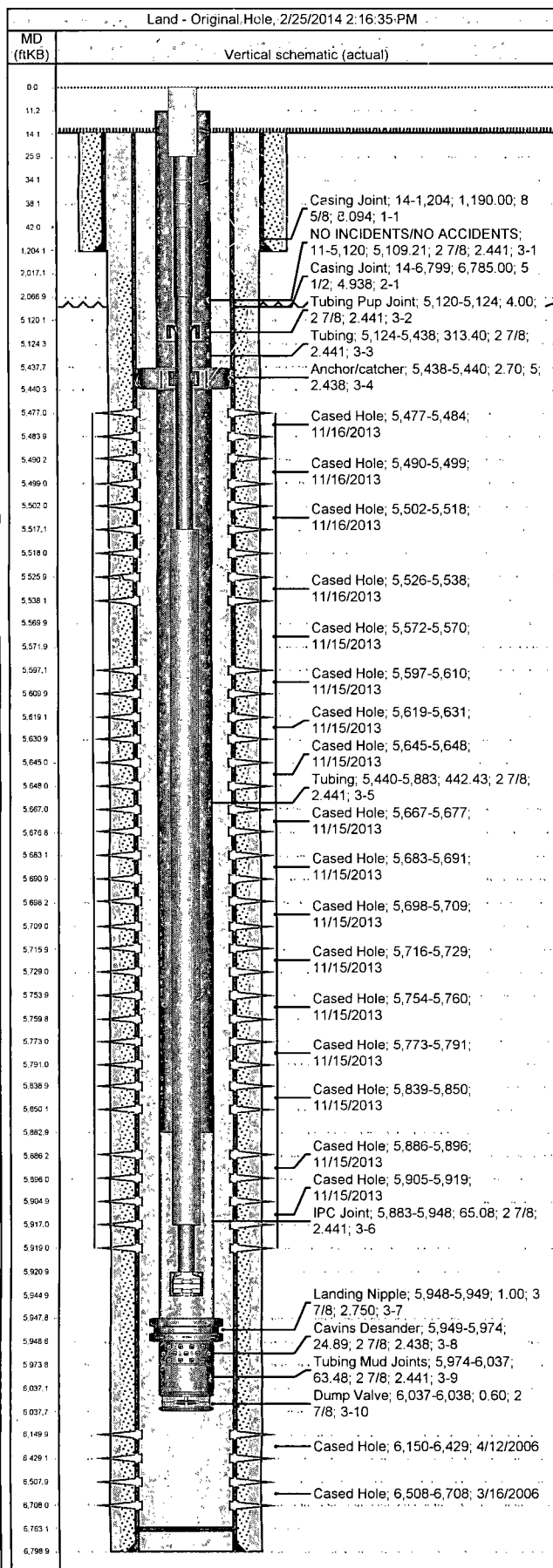


Job Details							
Job Category				Start Date		Release Date	
Major Rig Work Over (MRWO)				11/12/2013			
Casing Strings							
Csg Des	OD (in)	Wt/Len (lb/ft)	Grade		Top Thread	Set Depth (MD) (ftKB)	
Surface	8 5/8	24.00	K-55			1,204	
Production Casing	5 1/2	15.50	K-55			6,799	
Tubing Strings							
Tubing set at 6,037.8ftKB on 12/16/2013 17:00							
Tubing Description		Run Date		String Length (ft)		Set Depth (MD) (ftKB)	
Tubing		12/16/2013		6,026.79		6,037.8	
Item Des	Jts	OD (in)	Wt (lb/ft)	Grade	Len (ft)	Btm (ftKB)	
NO INCIDENTS/NO ACCIDENTS	162	2 7/8	6.50	J-55	5,109.21	5,120.2	
Tubing Pup Joint	1	2 7/8	6.50	J-55	4.00	5,124.2	
Tubing	10	2 7/8	6.50	J-55	313.40	5,437.6	
Anchor/catcher	1	5	6.50		2.70	5,440.3	
Tubing	14	2 7/8	6.50	J-55	442.43	5,882.7	
IPC Joint	2	2 7/8	6.50	J-55	65.08	5,947.8	
Landing Nipple	1	3 7/8	6.50	110	1.00	5,948.8	
Cavins Desander	1	2 7/8	6.50	J-55	24.89	5,973.7	
Tubing Mud Joints	2	2 7/8	6.50	J-55	63.48	6,037.2	
Dump Valve	1	2 7/8			0.60	6,037.8	
Rod Strings							
Polished Rod on 12/17/2013 15:00							
Rod Description		Run Date		String Length (ft)		Set Depth (ftKB)	
Polished Rod		12/17/2013		5,945.00		5,945.0	
Item Des	Jts	OD (in)	Wt (lb/ft)	Grade	Len (ft)	Btm (ftKB)	
Polished Rod	1	1 1/2			26.00	26.0	
Pony Rod	1	1		D-78	8.00	34.0	
Pony Rod	1	1		D-78	4.00	38.0	
Pony Rod	1	1	2.90	D-78	4.00	42.0	
Sucker Rod	81	1	2.90	D-78	2,025.00	2,067.0	
Sucker Rod	138	7/8	2.22	D-78	3,450.00	5,517.0	
Sinker Bar	16	1 1/2	6.01	SHSM	400.00	5,917.0	
Guided Pony	1	7/8		D-78	4.00	5,921.0	
Rod Insert Pump	1	1 3/4			24.00	5,945.0	
Perforations							
Date	Top (ftKB)	Btm (ftKB)	Shot Dens (shots/ft)	Entered Shot Total	Zone & Corription		
11/16/2013	5,477.0	5,484.0	2.0	16			
11/16/2013	5,490.0	5,499.0	2.0	20			
11/16/2013	5,502.0	5,518.0	2.0	34			
11/16/2013	5,526.0	5,538.0	2.0	18			
11/15/2013	5,572.0	5,570.0	2.0	38			
11/15/2013	5,597.0	5,610.0	2.0	28			
11/15/2013	5,619.0	5,631.0	2.0	28			
11/15/2013	5,645.0	5,648.0	2.0	8			
11/15/2013	5,667.0	5,677.0	2.0	22			
11/15/2013	5,683.0	5,691.0	2.0	18			
11/15/2013	5,698.0	5,709.0	2.0	24			
11/15/2013	5,716.0	5,729.0	2.0	28			
11/15/2013	5,754.0	5,760.0	2.0	14			
11/15/2013	5,773.0	5,791.0	2.0	38			
11/15/2013	5,839.0	5,850.0	2.0	24			
11/15/2013	5,886.0	5,896.0	2.0	22			
11/15/2013	5,905.0	5,919.0	2.0	30			
4/12/2006	6,150.0	6,429.0					



Wellbore Schematic

Well Name MATTERN, H.T. NCT-B 019	Lease Mattern, H.T. NCT-B	Field Name Tubb Oil & Gas	Business Unit Mid-Continent
--------------------------------------	------------------------------	------------------------------	--------------------------------



Perforations					
Date	Top (ftKB)	Btm (ftKB)	Shot Dens (shots/ft)	Entered Shot Total	Zone & Completion
3/16/2006	6,508.0	6,708.0			
Other Strings					
Run Date	Pull Date	Set Depth (ftKB)	Com		
Other In Hole					
Des	Top (ftKB)	Btm (ftKB)	Run Date	Pull Date	Com
Cement	6,075.0	6,110.0	11/13/2013		35' OF CEMENT ON-TOP OF THE CIBP, TO PERMANENTLY ABANDONED LOWER ZONE.
Bridge Plug (Permanent)	6,110.0	6,111.0	11/13/2013		TO ABANDON LOWER ZONE