

District I  
1625 N. French Dr., Hobbs, NM 88240  
Phone: (575) 393-6161 Fax: (575) 393-0720  
District II  
811 S. First St., Artesia, NM 88210  
Phone: (575) 748-1283 Fax: (575) 748-9720  
District III  
1000 Rio Brazos Road, Aztec, NM 87410  
Phone: (505) 334-6178 Fax: (505) 334-6170  
District IV  
1220 S. St. Francis Dr., Santa Fe, NM 87505  
Phone: (505) 476-3460 Fax: (505) 476-3462

**HOBBS**

**MAR 12 2014**

**RECEIVED**

State of New Mexico  
Geology, Minerals & Natural Resources Department  
**OIL CONSERVATION DIVISION**  
1220 South St. Francis Dr.  
Santa Fe, NM 87505

Form C-102  
Revised August 1, 2011  
Submit one copy to appropriate  
District Office

☐ AMENDED REPORT

**WELL LOCATION AND ACREAGE DEDICATION PLAT**

<sup>1</sup> API Number <b>30-025-41719</b>	<sup>2</sup> Pool Code <b>98061</b>	<sup>3</sup> Pool Name <b>Wildcat Wolfcamp</b>
<sup>4</sup> Property Code <b>40448</b>	<sup>5</sup> Property Name <b>BATTLE AXE 27 M</b>	<sup>6</sup> Well Number <b>Seismic Monitor Wolfcamp #1</b>
<sup>7</sup> BLD No. <b>217817</b>	<sup>8</sup> Operator Name <b>ConocoPhillips Company</b>	<sup>9</sup> Elevation <b>3127'</b>

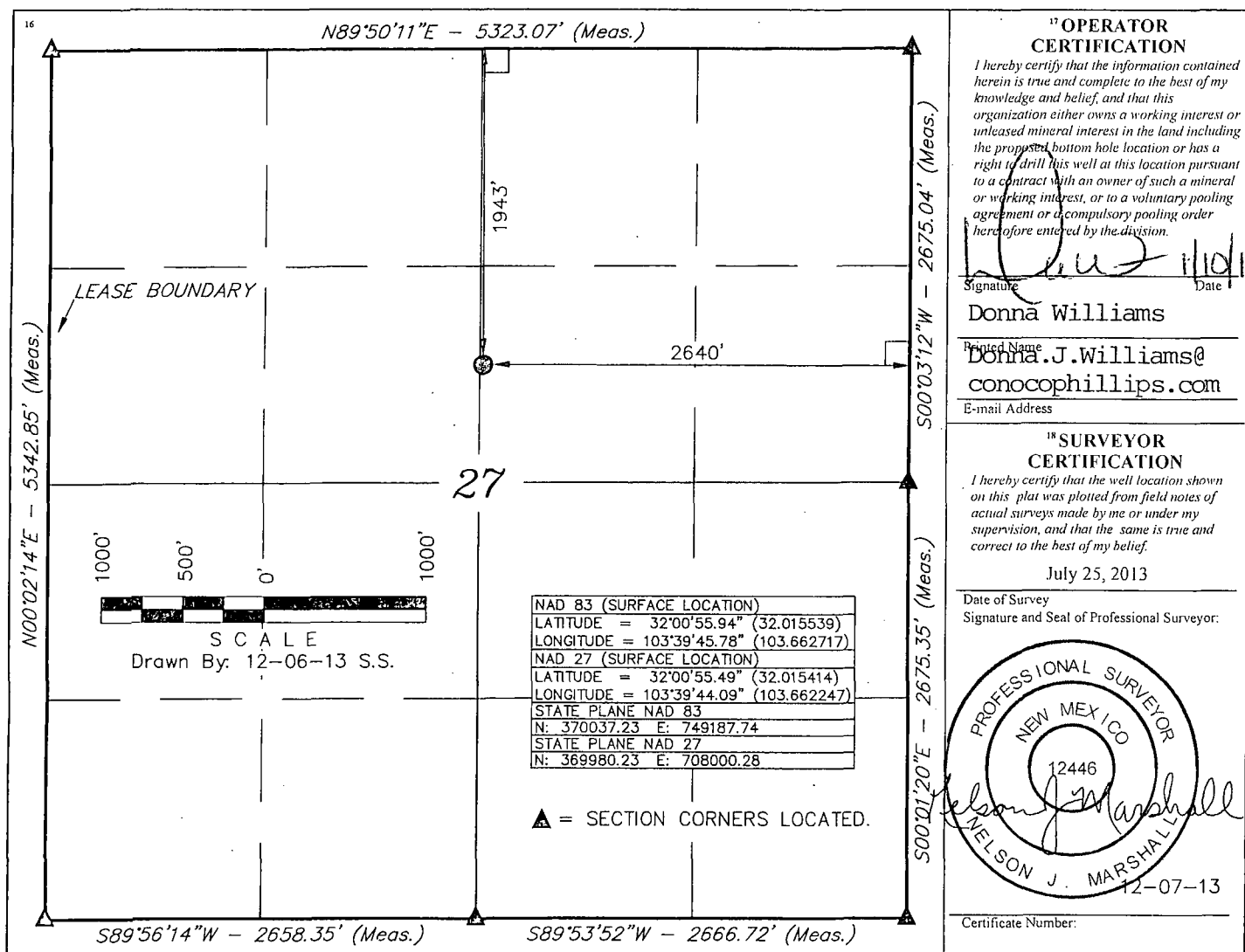
**10 Surface Location**

UL or lot no.	Section	Township	Range	Lot Idn	Feet from the	North/South line	Feet from the	East/West line	County
G	27	26 S	32 E		1943	NORTH	2640	EAST	LEA

**11 Bottom Hole Location If Different From Surface**

UL or lot no.	Section	Township	Range	Lot Idn	Feet from the	North/South line	Feet from the	East/West line	County
<sup>12</sup> Dedicated Acres <b>N/A Monitor</b>	<sup>13</sup> Joint or Infill <b>(Source)</b>	<sup>14</sup> Consolidation Code <b>Well</b>	<sup>15</sup> Order No.						

No allowable will be assigned to this completion until all interests have been consolidated or a non-standard unit has been approved by the division.



## Operator Certification

HOBBS OCD

MAR 12 2014

CONOCOPHILLIPS COMPANY

RECEIVED

### CERTIFICATION:

I hereby certify that I, or persons under my direct supervision, have inspected the proposed drill site and access route proposed herein; that I am familiar with the conditions which currently exist; that I have full knowledge of State and Federal laws applicable to this operation; that the statements made in this APD package are, to the best of my knowledge, true and correct; and that the work associated with the operations proposed herein will be performed in conformity with this APD package and the terms and conditions under which it is approved. I also certify that I, or the company I represent, am responsible for the operations conducted under this application with bond coverage provided by Nationwide Bond ES0085. These statements are subject to the provisions of 18 U.S.C. 1001 for the filing of false statements.



Donna Williams  
Sr. Regulatory Advisor

Date: 03/11/13