

30-025-41720

Surface Use Plan of Operations

ConocoPhillips Company
War Hammer 25 1M
1890 FSL & 1240 FEL (NESE) 25-26S-32E
Federal Lease No. LC069515
Lea County, New Mexico

HOBBS OCD

MAR 12 2014

1. Access Road - Existing

RECEIVED

- A. Travel 6.3 miles on Battle Axe Rd/CR J-2 (as indicated on the plat) for 6.3 miles. Head south on existing road for approximately 1 mile. Turn north onto existing lease road and travel .2 mile. Turn east onto proposed access road and travel 12' to location.
- B. Proposed route to location - **See Enclosed County Map & Vicinity Map.**
- C. The existing road will be maintained, including Dust Suppression, in the same or better condition as existed prior to the commencement of operations and said maintenance will continue until final abandonment and reclamation of this drilling location.

2. Planned Access Roads

- A. There will be 12' of new access road with a 30' construction right of way and a minimum travel width of 14'. All is on federal surface.
- B. Maximum grade will not exceed 8 percent.
- C. There will be no County approach; however there could be an apron from the road to the pad corner of about 60' to allow truck turning traffic.
- D. There will be no low water crossing or culverts
- E. There will be no cattleguard installed on the access road.
- F. The proposed access road will be constructed in accordance with roading guidelines established for oil & gas exploration and development activities as referenced in the joint BLM/USFS publication: Surface Operating Standards for Oil and Gas Exploration and Development, Third Edition and/or BLM Manual Section 9113 concerning road construction activities on projects under federal jurisdiction. Prior to moving in any heavy equipment, the access road will be thoroughly compacted. The access road will be surfaced to the required minimum depth (after compaction).

3. Location of Existing Wells within a One-Mile Radius. **See Enclosed One-Mile Radius Plat.**

- A. There are no water wells within a one-mile radius
- B. There are no dry holes located within a one-mile radius.
- C. There are no plugged and abandoned wells within a one-mile radius.
- D. There are no saltwater disposal wells within a one-mile radius.
- E. There are no proposed drill wells within a one-mile radius.
- F. There are approximately 45 producing/injection wells (North El Mar Unit) within a one-mile radius.
- G. There are no shut-in wells within a one-mile radius.
- H. There are no injection wells within a one-mile radius.
- I. There are no monitoring or observation wells within a one-mile radius.
- J. There is no water source well within a one-mile radius.

MAR 17 2014

4. Location of existing and/or Proposed Facilities

- A. On Well Pad: There are no anticipated surface facilities on this pad. The well is planned as a monitor/source well only.

5. Location and Type of Water Supply

- A. Fresh water will be obtained from an approved source.
- B. No water well will be drilled on this location.

6. Source of Construction Materials

- A. Any materials needed in addition to what can be used from location and access road will be hauled in from a supplier having a permitted source of materials.
- B. If production is established, any additional construction materials required for the surfacing of the access road and for installation of the production facilities will be purchased from a supplier having a permitted source of materials.
- C. No construction materials will be taken from Federal lands without a prior approval from the appropriate Surface Management Agency.

7. Methods for Handling Waste Disposal

- A. Hazardous substances as listed as hazardous under the Comprehensive Environmental Response Compensation and Liability Act (CERCLA) of 1980, as amended, 42 U.S.C. 9601 et seq. and the regulations issued under CERCLA, will be disposed of in the appropriate pit.
- B. Any spills of oil or any other potentially hazardous material will be cleaned up and immediately removed to an approved disposal site.
- C. Sewage will be disposed of according to county and state requirements in a portable chemical toilet(s) or in a hole at least 20 feet deep excavated in the cut portion of the well pad. Other waste and chemicals may not be disposed of on location. Waste will not be burned on location.
- D. Garbage and trash will be contained in portable trash cages. The contents of the trash cages will be disposed of according to county and state regulations at an approved facility. Disposal of it or burning it will not be allowed on the well location.
- F. After drilling rig has moved out of area, any scattered trash and litter will be removed from site.
- G. All potentially hazardous areas will be fenced, and will remain in this condition until entire area can be rehabilitated.

8. Ancillary Facilities

The production facilities are discussed under Item 4.

9. Well Site Layout

- A. **See Enclosed Well Location Plat**
- B. Well Site Layout – **See Enclosed Drilling Rig Layout Plat**
- C. Topsoil will be stripped from the locations and access roads and be stockpiled and be deposited apart from other excavated material.
- D. There will be a no reserve pit on location. The well will be drilled via a closed loop system and the contents will be taken to an approved disposal site.

10. Plans for Reclamation of the Surface

- A. If this well is a producer, all site rehabilitation shall be completed within six months. Under normal weather conditions, the timetable for rehab will allow two months for backfill settling and two months to complete final re-contouring, and top-soiling. In the event of winter freeze-up, reclamation will be put on hold as determined by the BLM.
- B. At such time as the well is abandoned, ConocoPhillips Company will contact the BLM for development of the final rehabilitation plan. Upon abandonment, a dry hole marker welded to surface casing four feet below ground level will be installed. It will contain the same information as the well sign as directed by 43 CFR 3162.6 (30 CFR 221.22). The dry hole marker sealing the casing will have an 1/8" to 1/4" weep hole which will allow pressure to dissipate and make detection of any fluid seepage easier.
- C. If this well site is constructed and not drilled, the site and access road will be reclaimed or BLM approved special erosion control measures implemented within 90 days of site construction unless otherwise approved in writing by sundry notice.
- D. The unused portion of the site will be ripped prior to replacing the topsoil. The soil-banked material will be spread over the area. Reseeding will be an approved mixture by the BLM. If the broadcast method is utilized, the seed mixture shall be doubled. There shall be no primary or secondary noxious weed seed in the native seed mixture
- E. The entire disturbed location may be fenced after seeding. When the location has been rehabilitated and vegetation re-established, the fence shall be removed or the fenced area reduced as required by the landowner or BLM.
- F. Weeds will be controlled on disturbed areas within the exterior limits of the well pad. The control methods will be in accordance with guidelines established by EPA, BLM, state, and local authorities.
- G. A pre-work onsite with the BLM and ConocoPhillips Company may be held for all phases of reclamation
- H. ConocoPhillips Company will utilize many best management practices. The first is location selection itself and adjusting the project area to accommodate the terrain to minimize the initial disturbance and erosion concerns. The project area will have the required interim reclamation and reseeded for the unused portion of the well site not needed for production operations. The interim reclamation will occur shortly after completion operation and facility installation has happened.

11. Surface Ownership
Bureau of Land Management
620 E. Greene Street
Carlsbad, NM 88220

12. Other Information

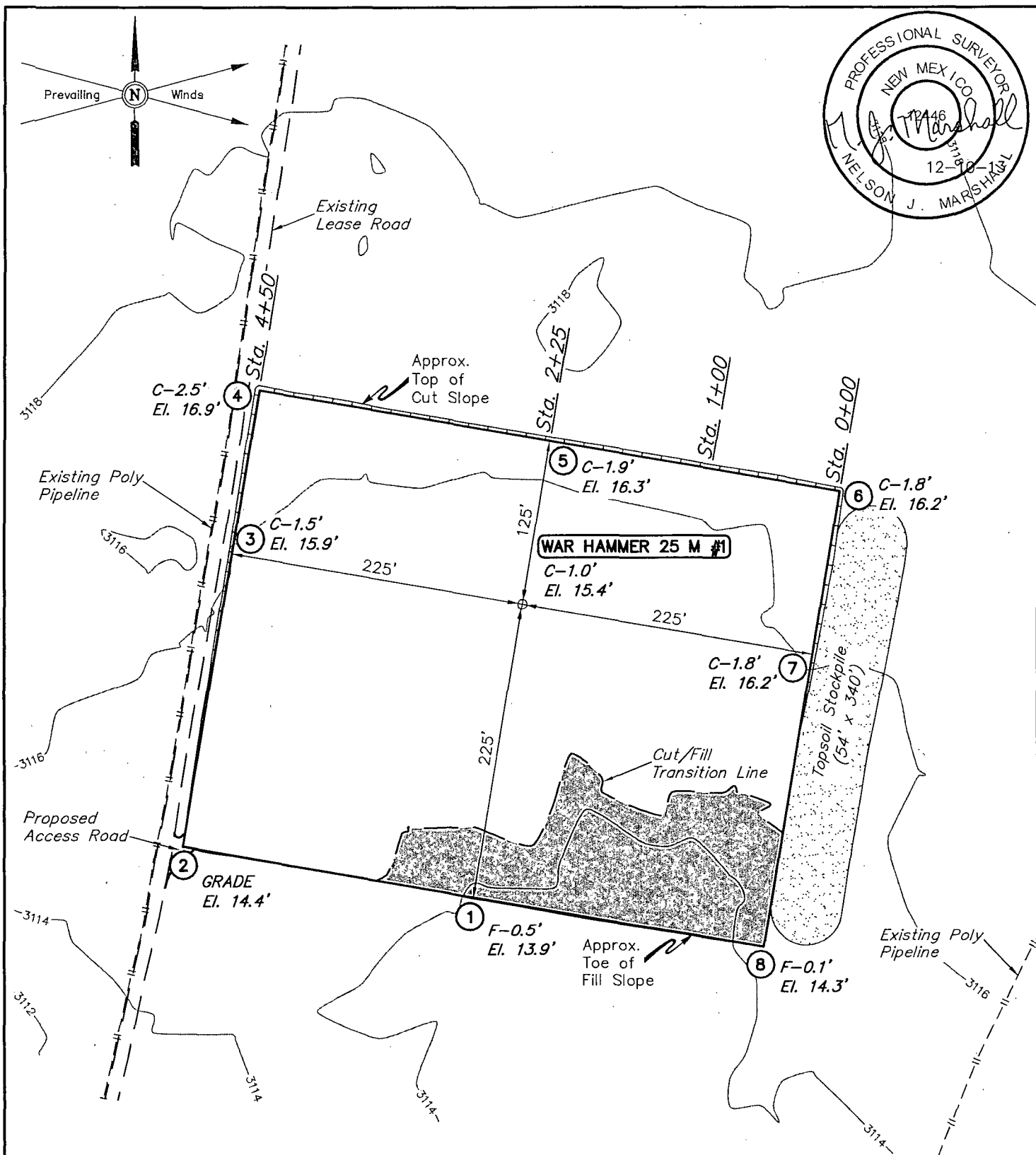
- A. The area that would be impacted by the well site and access road has been surveyed for cultural resources and/or the acreage has been covered under contribution to the MOA.
- B. ConocoPhillips Company will be responsible for informing all persons in the area who are associated with this project that they will be subject to prosecution for knowingly disturbing historic or archaeological sites or for collecting artifacts.

If historic or archaeological materials are uncovered, ConocoPhillips Company will suspend all operations that might further disturb such materials and immediately contact the Authorized Officer, Bureau of Land Management.

Within five (5) working days the Authorized Officer will inform ConocoPhillips Company as to whether the materials appear eligible for the National Register of Historic Places; the mitigation measures the operator will likely have to undertake before the site can be used

(assuming in site preservation is not necessary); and a time frame for the Authorized officer to complete an expedited review under 36 CFR 800.11 to confirm, through the State Historic Preservation Officer, that the findings of the Authorized Officer are correct and that mitigation is appropriate.

- C. ConocoPhillips Company will protect, in place, all public land survey monuments, private property corner, and Forest service boundary markers. In the event that any such land markers or monuments are destroyed in the exercise of their rights, depending on the type of monument destroyed, the operator shall see that they are reestablished or referenced in accordance with (1) the procedures outlined in the "Manual of Instructions for the Survey of the Public Land of the United States", (2) the specifications of the county surveyor, or (3) the specification of the BLM.
- D. ConocoPhillips Company will comply with the additional Conditions of Approval provided by the BLM.



ELEV. UNGRADED GROUND AT LOC. STAKE = 3115.4' FINISHED GRADE ELEV. AT LOC. STAKE = 3114.4'

NOTES:

- Construct diversion ditches as needed.
- Underground utilities shown on this sheet are for visualization purposes only, actual locations to be determined prior to construction.

ConocoPhillips

ConocoPhillips Company

WAR HAMMER 25 M #1
SECTION 25, T26S, R32E, N.M.P.M.
1890' FSL 1240' FEL

DRAWN BY: H.K.W.

SCALE: 1" = 100'

REVISED: 12-10-13 S.S.

DATE: 07-16-13

REVISED: 07-27-13 J.S.

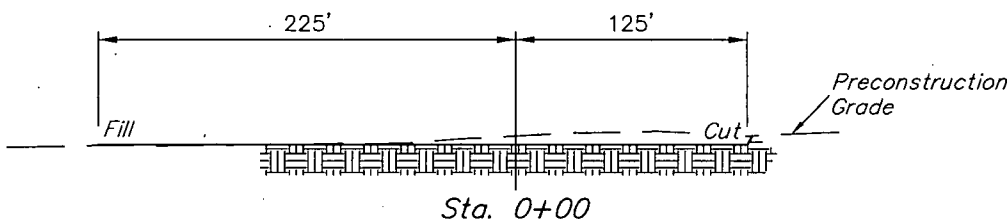
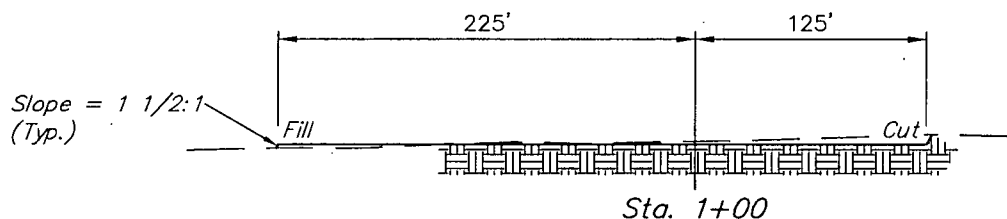
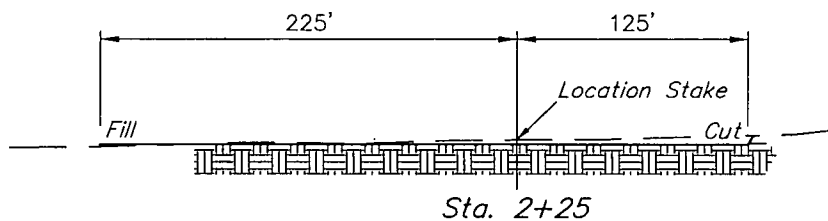
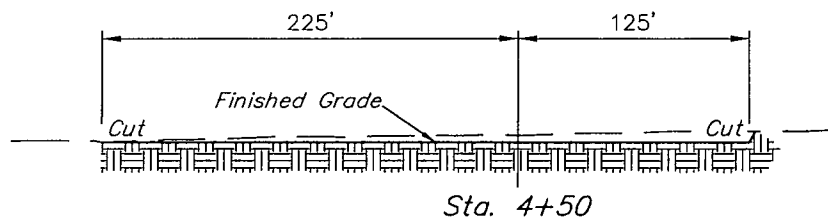
LOCATION LAYOUT

FIGURE #1



Corporate Office * 85 South 200 East
Vernal, UT 84078 * (435) 789-1017

1" = 40'
X-Section
Scale
1" = 100'



APPROXIMATE EARTHWORK QUANTITIES		APPROXIMATE SURFACE DISTURBANCE AREAS		
(10") TOPSOIL STRIPPING	4,760 Cu. Yds.		DISTANCE	ACRES
REMAINING LOCATION	1,790 Cu. Yds.	WELL SITE DISTURBANCE	N/A	±4.090
TOTAL CUT	6,550 Cu. Yds.	25' WIDE ACCESS ROAD R-O-W DISTURBANCE	12'	±0.007
FILL	1,790 Cu. Yds.			
EXCESS MATERIAL	4,760 Cu. Yds.	TOTAL SURFACE USE AREA	12'	±4.097
TOPSOIL	4,760 Cu. Yds.			
EXCESS UNBALANCE (After Interim Rehabilitation)	0 Cu. Yds.			

NOTES:

- Fill quantity includes 5% for compaction.
- Topsoil should not be stripped below finished grade on substructure area.

ConocoPhillips

ConocoPhillips Company

WAR HAMMER 25 M #1
SECTION 25, T26S, R32E, N.M.P.M.
1890' FSL 1240' FEL

DRAWN BY: J.S.

SCALE: AS SHOWN

REVISED: 12-10-13 S.S.

DATE: 07-27-13

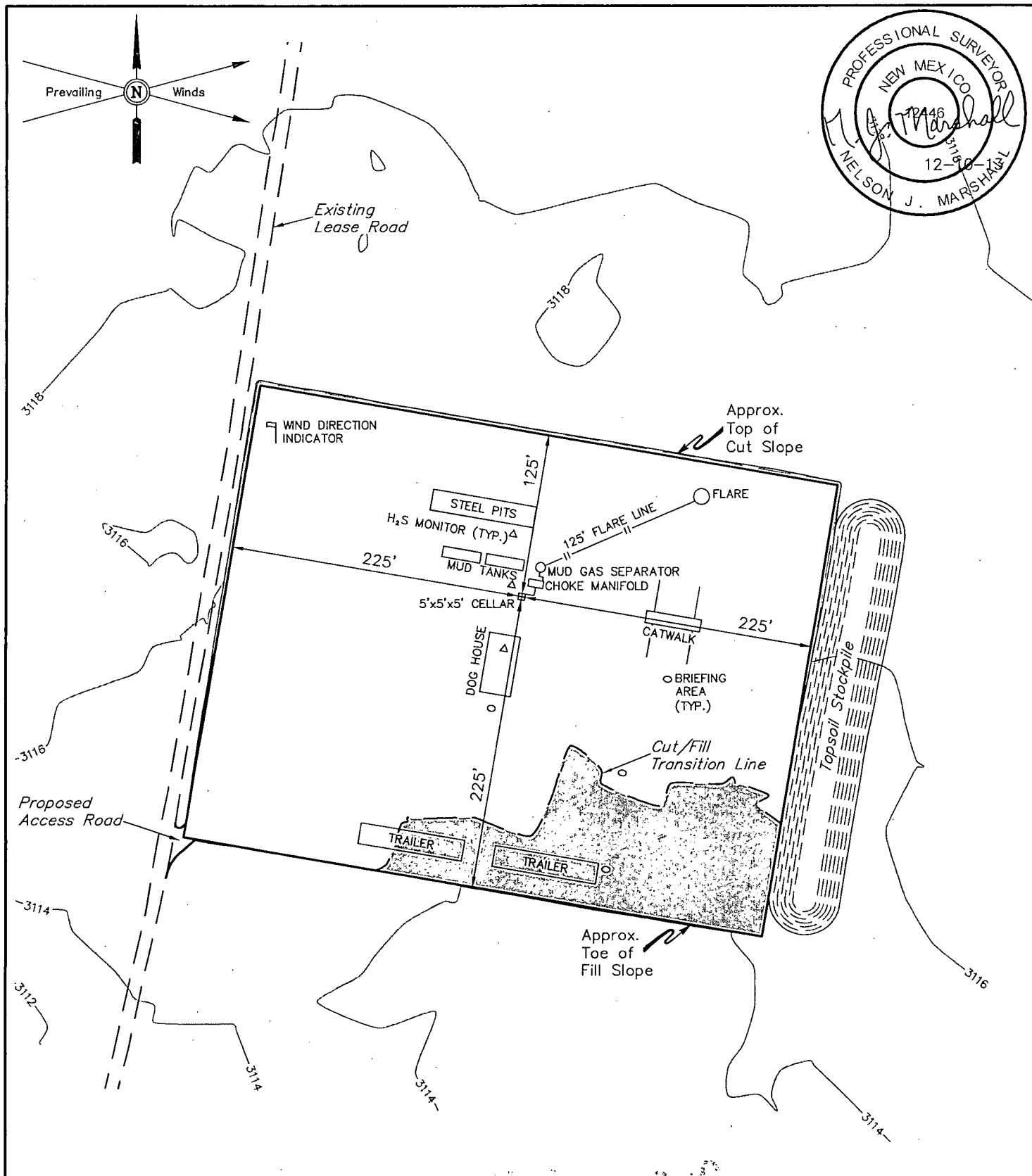
REVISED: 07-31-13



Corporate Office * 85 South 200 East
Vernal, UT 84078 * (435) 789-1017

TYPICAL CROSS SECTIONS

FIGURE #2



NOTES:

- Flare pit is to be located a min. of 125' from the well head.

ConocoPhillips

ConocoPhillips Company

WAR HAMMER 25 M #1
SECTION 25, T26S, R32E, N.M.P.M.
1890' FSL 1240' FEL

DRAWN BY: J.S.

SCALE: 1" = 100'

DATE: 07-27-13

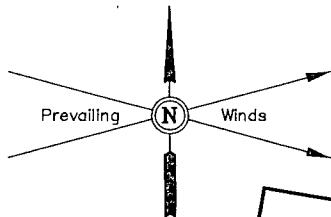
REVISED: 12-10-13 S.S.



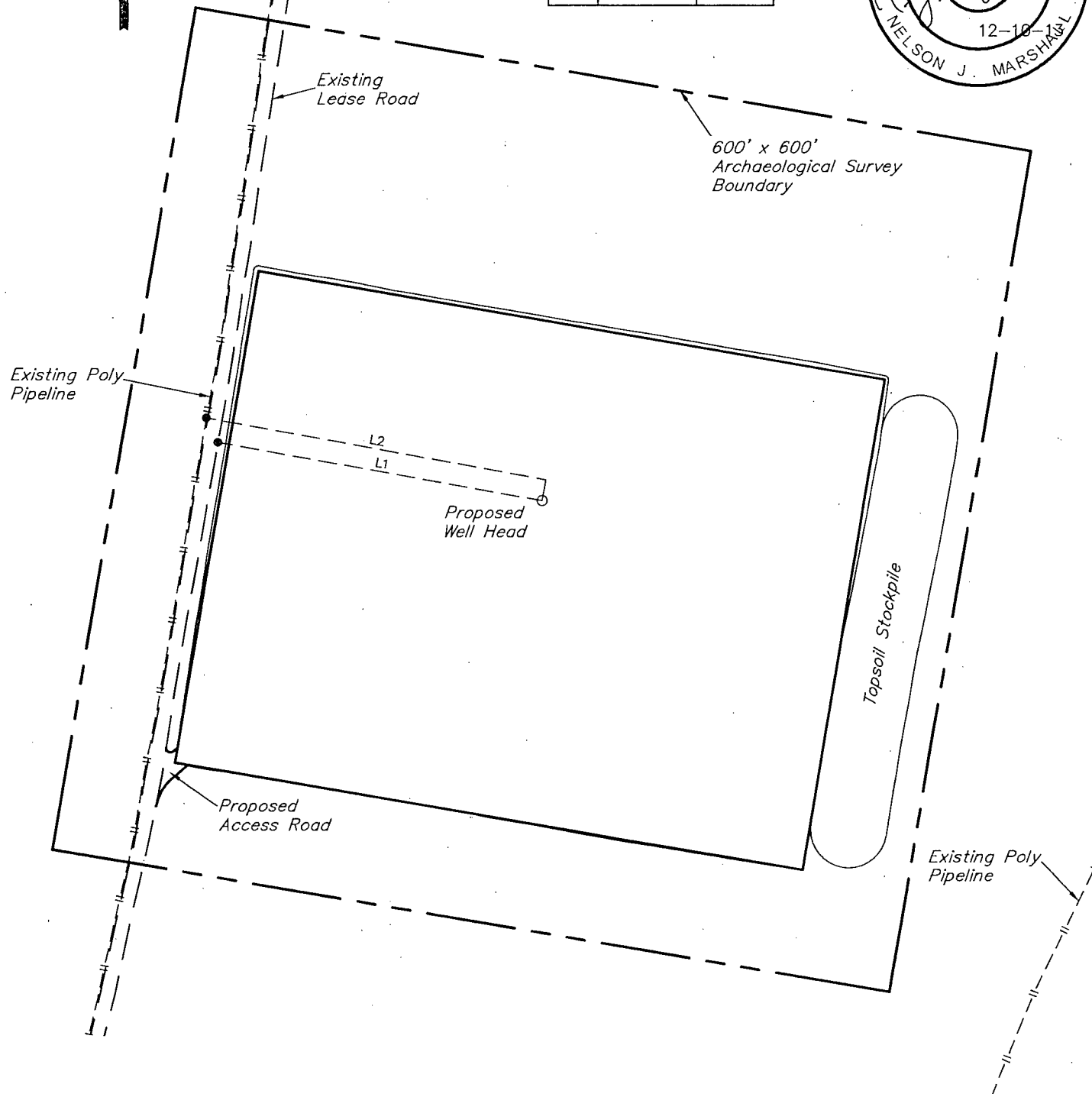
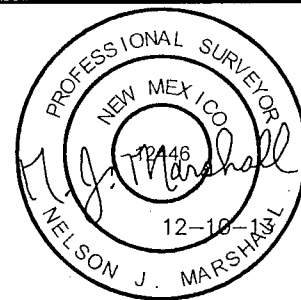
Corporate Office * 85 South 200 East
Vernal, UT 84078 * (435) 789-1017

TYPICAL RIG LAYOUT

FIGURE #3



LINE TABLE		
LINE	DIRECTION	LENGTH
L1	N80°W	233'
L2	N80°W	244'



NOTES:

- Underground utilities shown on this sheet are for visualization purposes only, actual locations to be determined prior to construction.

ConocoPhillips

ConocoPhillips Company

**WAR HAMMER 25 M #1
SECTION 25, T26S, R32E, N.M.P.M.
1890' FSL 1240' FEL**

DRAWN BY: J.S.

SCALE: 1" = 100'

REVISED: 12-10-13 S.S.

DATE: 07-27-13

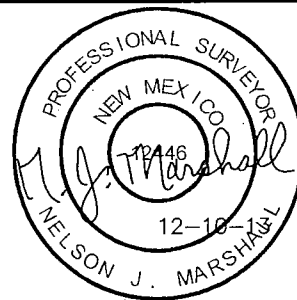
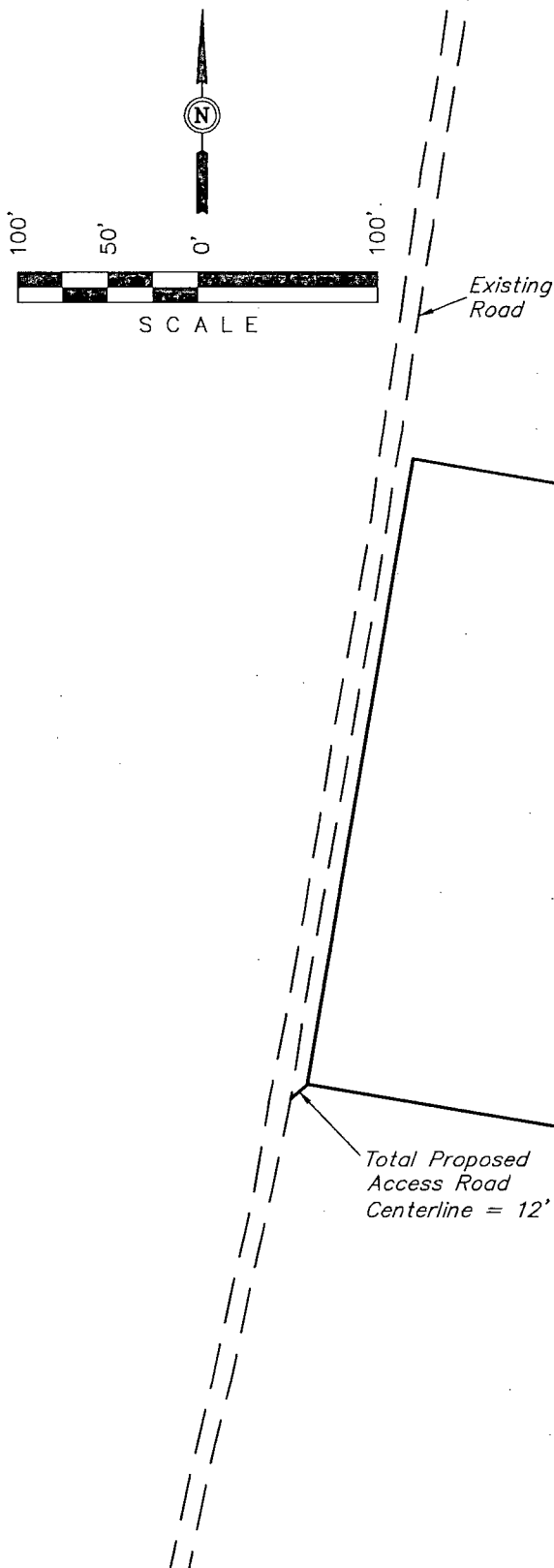
REVISED: 07-31-13

**ARCHAEOLOGICAL SURVEY
BOUNDARY**

FIGURE #5



Corporate Office * 85 South 200 East
Vernal, UT 84078 * (435) 789-1017



NOTES:

- The maximum grade of the proposed access road is 3%.

ConocoPhillips

ConocoPhillips Company

WAR HAMMER 25 M #1
SECTION 25, T26S, R32E, N.M.P.M.
1890' FSL 1240' FEL

DRAWN BY: J.S.

SCALE: 1" = 100'

REVISED: 12-10-13 S.S.

DATE: 07-27-13

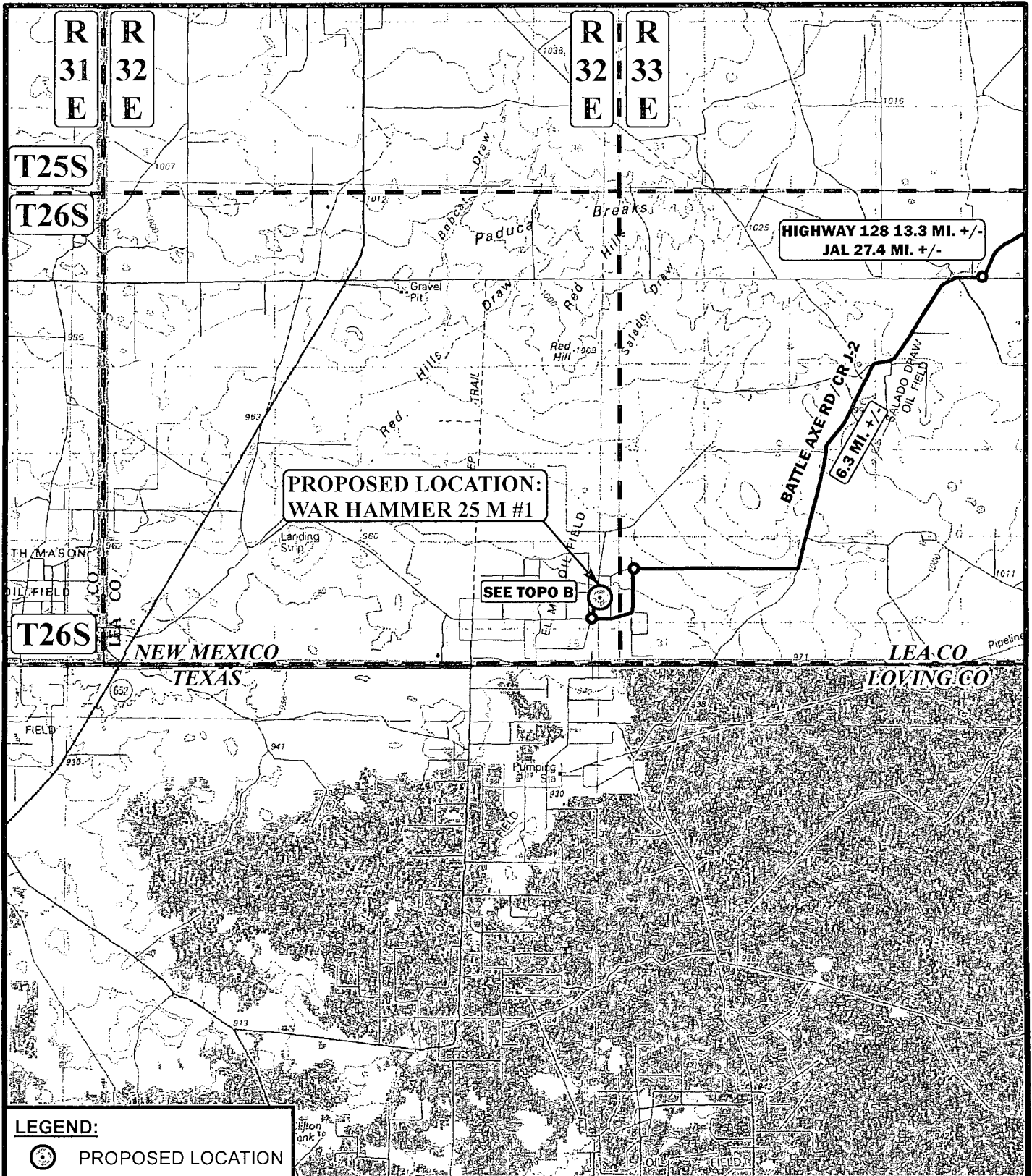
REVISED: 07-31-13



Corporate Office * 85 South 200 East
Vernal, UT 84078 * (435) 789-1017

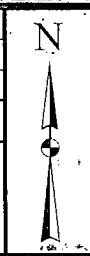
ACCESS ROAD LAYOUT

FIGURE #6



LEGEND:
 PROPOSED LOCATION

SCALE: 1:100,000	REV: 12-10-13 L.S.
DRAWN BY: J.L.H.	
DATE DRAWN: 07-30-13	



ConocoPhillips	ConocoPhillips Company
WAR HAMMER 25 M #1 SECTION 25, T26S, R32E, N.M.P.M. 1890' FSL 1240' FEL	
ACCESS ROAD MAP	TOPO A



Corporate Office * 85 South 200 East
 Vernal, UT 84078 * (435) 789-1017

