

District I  
1625 N. French Dr., Hobbs, NM 88240  
Phone: (575) 393-6161 Fax: (575) 393-0720  
District II  
811 S. First St., Artesia, NM 88210  
Phone: (575) 748-1283 Fax: (575) 748-9720  
District III  
1000 Rio Brazos Road, Aztec, NM 87410  
Phone: (505) 334-6178 Fax: (505) 334-6170  
District IV  
1220 S. St. Francis Dr., Santa Fe, NM 87505  
Phone: (505) 476-3460 Fax: (505) 476-3462

State of New Mexico

Form C-102

Energy, Minerals & Natural Resources Department  
OIL CONSERVATION DIVISION  
1220 South St. Francis Dr.  
Santa Fe, NM 87505

Revised August 1, 2011  
Submit one copy to appropriate  
District Office

☐ AMENDED REPORT

RECEIVED  
FEB 17 2014

WELL LOCATION AND ACREAGE DEDICATION PLAT

<sup>1</sup> API Number 30-025-21738	<sup>2</sup> Pool Code 55695	<sup>3</sup> Pool Name Shipp, Strawn
<sup>4</sup> Property Code 40397	<sup>5</sup> Property Name SIMMONS ESTATE	<sup>6</sup> Well Number 2
<sup>7</sup> OGRID No. 113315	<sup>8</sup> Operator Name TEXLAND PETROLEUM, LP	<sup>9</sup> Elevation 3769

<sup>10</sup> Surface Location

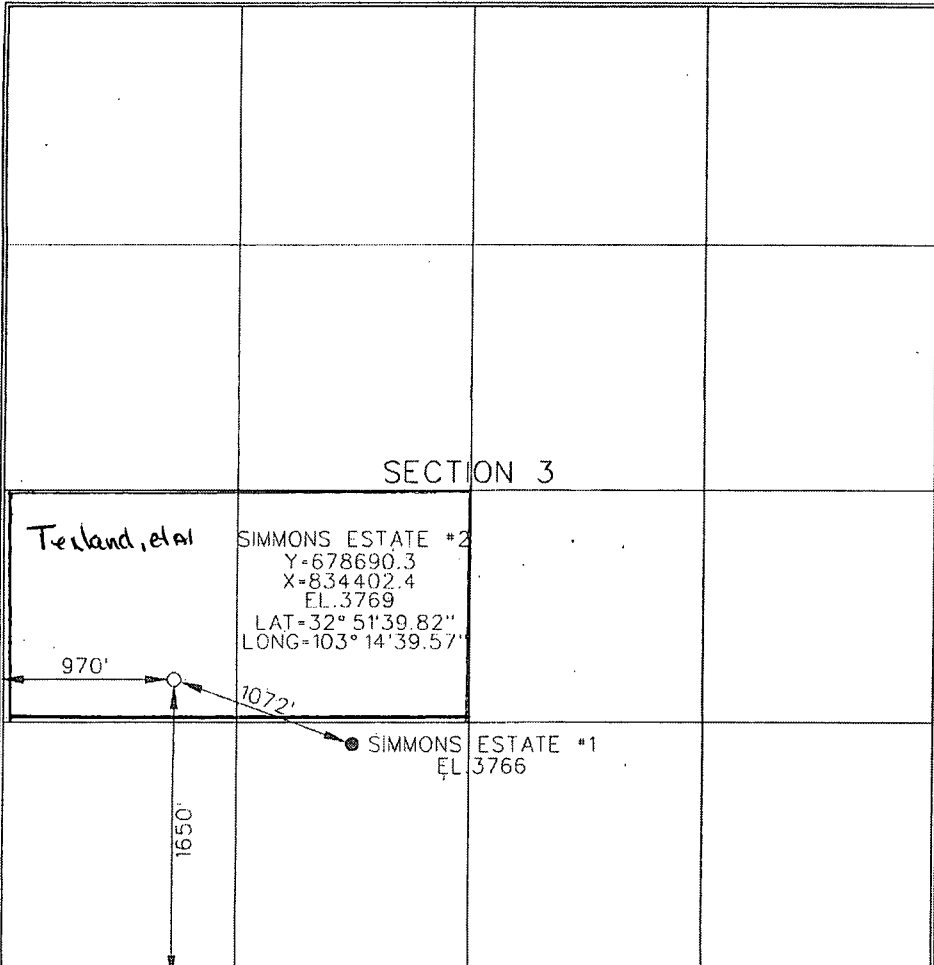
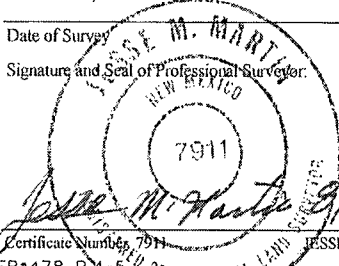
UL or lot no. L	Section 3	Township 17-S	Range 37-E	Lot Idn	Feet from the 1650	North/South line SOUTH	Feet from the 970	East/West line WEST	County LEA
--------------------	--------------	------------------	---------------	---------	-----------------------	---------------------------	----------------------	------------------------	---------------

<sup>11</sup> Bottom Hole Location If Different From Surface

UL or lot no.	Section	Township	Range	Lot Idn	Feet from the	North/South line	Feet from the	East/West line	County
---------------	---------	----------	-------	---------	---------------	------------------	---------------	----------------	--------

<sup>12</sup> Dedicated Acres 80	<sup>13</sup> Joint or Infill	<sup>14</sup> Consolidation Code	<sup>15</sup> Order No. NSL-7036
-------------------------------------	-------------------------------	----------------------------------	-------------------------------------

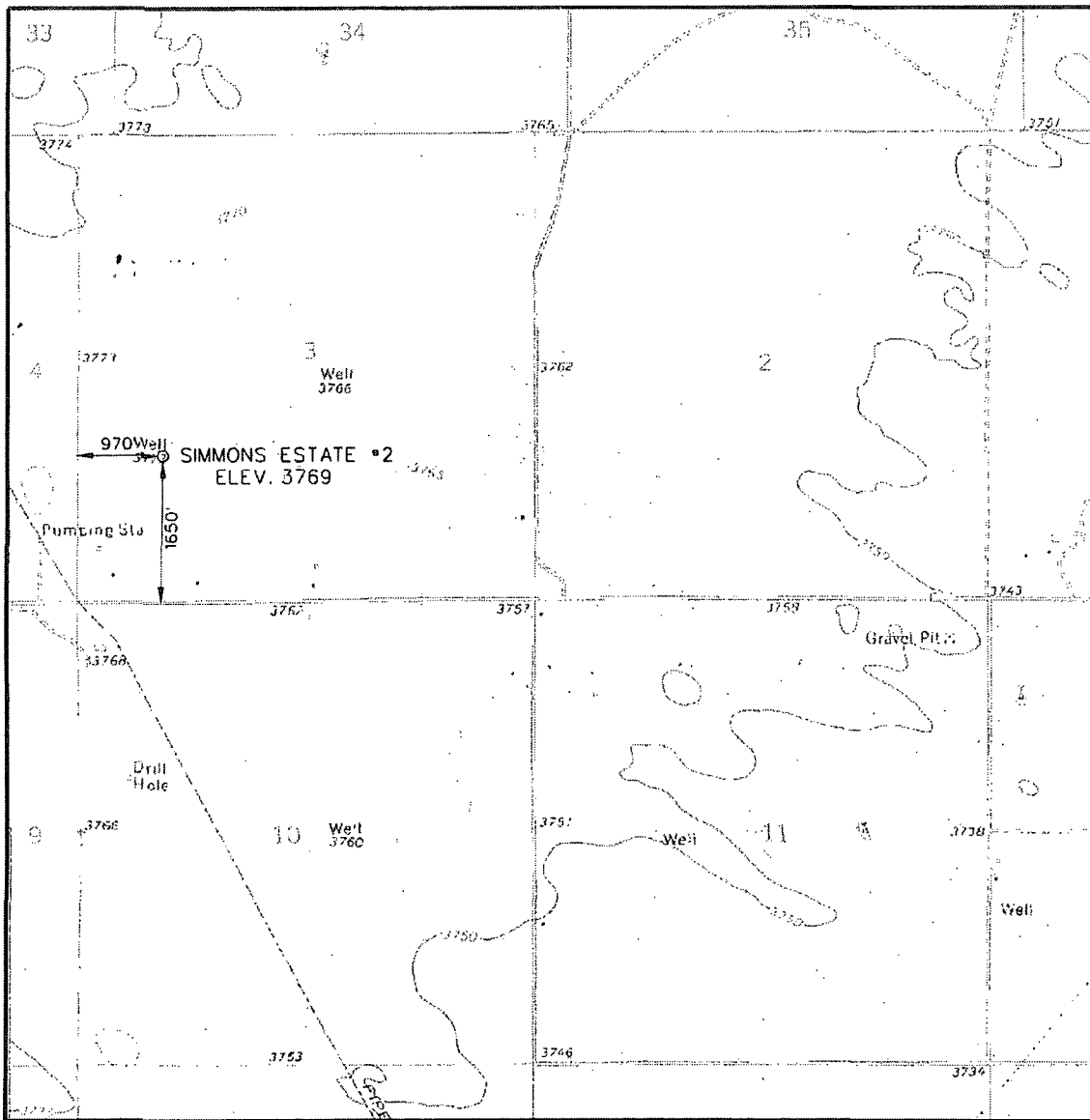
No allowable will be assigned to this completion until all interests have been consolidated or a non-standard unit has been approved by the division.

				<b><sup>17</sup> OPERATOR CERTIFICATION</b> I hereby certify that the information contained herein is true and complete to the best of my knowledge and belief, and that this organization either owns a working interest or unleased mineral interest in the land including the proposed bottom hole location or has a right to drill this well at this location pursuant to a contract with an owner of such a mineral or working interest, or to a voluntary pooling agreement or a compulsory pooling under heretofore entered by the division.  Signature: <u>Vickie Smith</u> Date: <u>2/17/14</u> Printed Name: <u>Vickie Smith</u> E-mail Address: <u>vsmithe@tripetco.com</u>	
				<b><sup>18</sup> SURVEYOR CERTIFICATION</b> I hereby certify that the well location shown on this plat was plotted from field notes of actual surveys made by me or under my supervision, and that the same is true and correct to the best of my belief. JULY 22, 2013  Date of Survey: _____ Signature and Seal of Professional Surveyor:  Certificate Number: 7911 JESSE M. MARTIN FB-478 P.4-5 37,595	

MAR 19 2014

PM.

# LOCATION VERIFICATION MAP



1" = 2000'

U.S.G.S. TOPOGRAPHIC MAP - HUMBLE CITY, N.M.

Operator: TEXLAND PETROLEUM, L.P. Lease: SIMMONS ESTATE

Description 1650 FEET FROM THE SOUTH LINE AND 970 FEET FROM THE WEST LINE

Section	Township	Range	Survey	County
3	17-S	37-E	N.M.P.M.	LEA

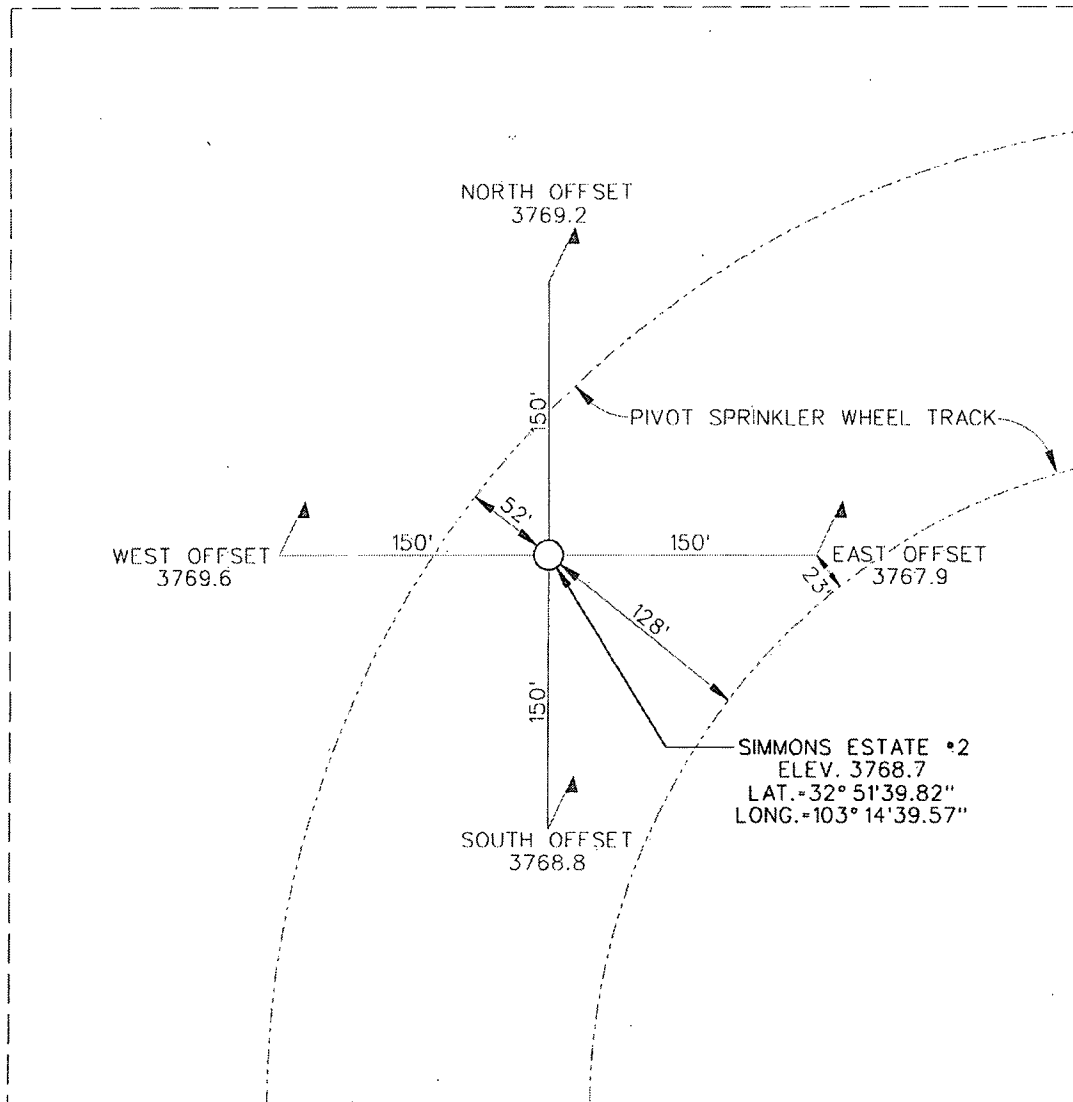
**WILSON SURVEYING Co., INC.**  
 Registered Professional Land Surveyors  
 Global Positioning System Surveyors

3330 70th ST., SUITE 201 • LUBBOCK, TX. 79413  
 (806) 792-4731 • FAX (806) 792-1646

•37,595

MAR 19 2019

SECTION 3, TOWNSHIP 17 SOUTH, RANGE 37 EAST, N.M.P.M.  
LEA COUNTY, NEW MEXICO



DIRECTIONS TO LOCATION

FROM THE CENTER OF LOVINGTON, NEW MEXICO  
TRAVEL SOUTHEAST ALONG STATE HWY. 18 APPROX.  
6.55 MILES. TURN LEFT ON W. STILES ROAD AND GO  
EAST APPROX. 1.7 MILES, LOCATION IS 1650 FEET NORTH.

SIMMONS ESTATE #2  
LOCATED 1650 FEET FROM THE SOUTH LINE  
AND 970 FEET FROM THE WEST LINE OF  
SECTION 3, TOWNSHIP 17 SOUTH, RANGE  
37 EAST, N.M.P.M.,  
LEA COUNTY, NEW MEXICO

SCALE: 1" = 100'	REVISION:	PLAT DATE: 7-29-13
CLIENT: TEXLAND PETROLEUM, LP		
DRAWN BY: B. BURROW		SURVEY DATE: 7-22-13
SURVEYED BY: J.M. MARTIN		FIELD BOOK: 478, PG. 4-5
FILE: 37595.dgn	FILE NO. 37,595	SHEET NO. 1



WILSON SURVEYING Co., INC.

Registered Professional Land Surveyors

3330 - 70th Street, Suite 201 • Lubbock, Texas 79413  
Office 806.792.4731 Fax 806.792.1646

