



**PATTERSON-UTI**

*Well Control*

HOBBS OGD

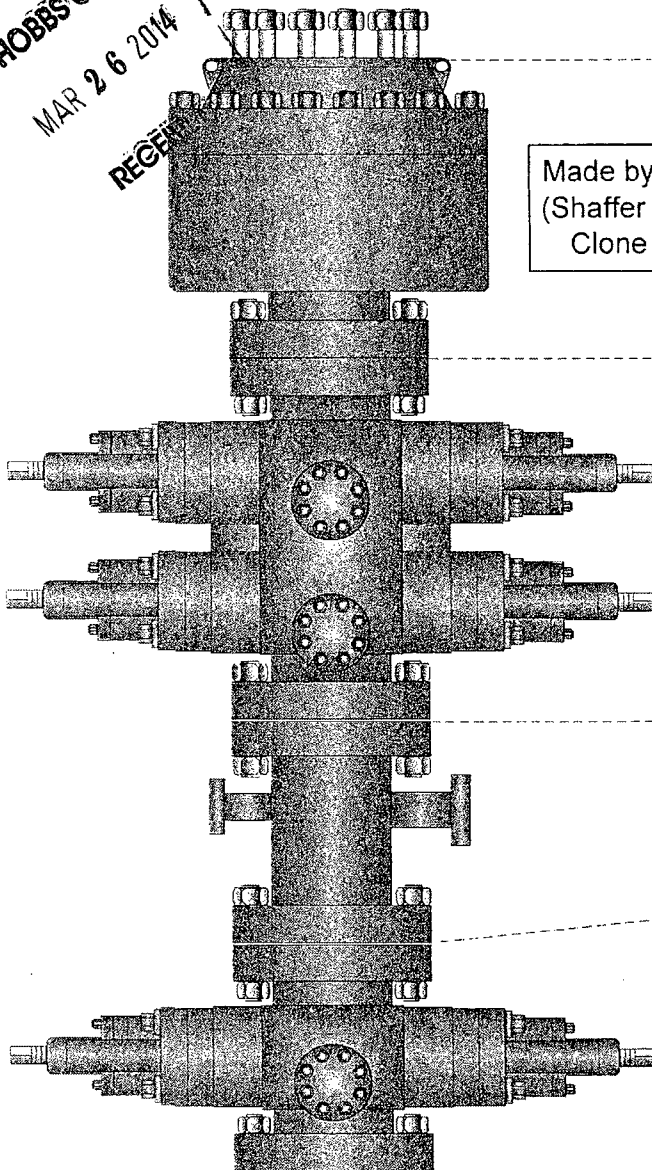
MAR 26 2014

RECEIVED

30-025-41754

**RIG:**

250



Made by Cameron  
(Shaffer Spherical)  
Clone Annular

PATTERSON-UTI # PS2-628

STYLE: New Shaffer Spherical

BORE 13 5/8" PRESSURE 5,000

HEIGHT: 48 1/2" WEIGHT: 13,800 lbs

PATTERSON-UTI # PC2-128

STYLE: New Cameron Type U

BORE 13 5/8" PRESSURE 10,000

RAMS: TOP 5" Pipe BTM Blinds

HEIGHT: 66 5/8" WEIGHT: 24,000 lbs

Length 40" Outlets 4" 10M

DSA 4" 10M x 2" 10M

PATTERSON-UTI # PC2-228

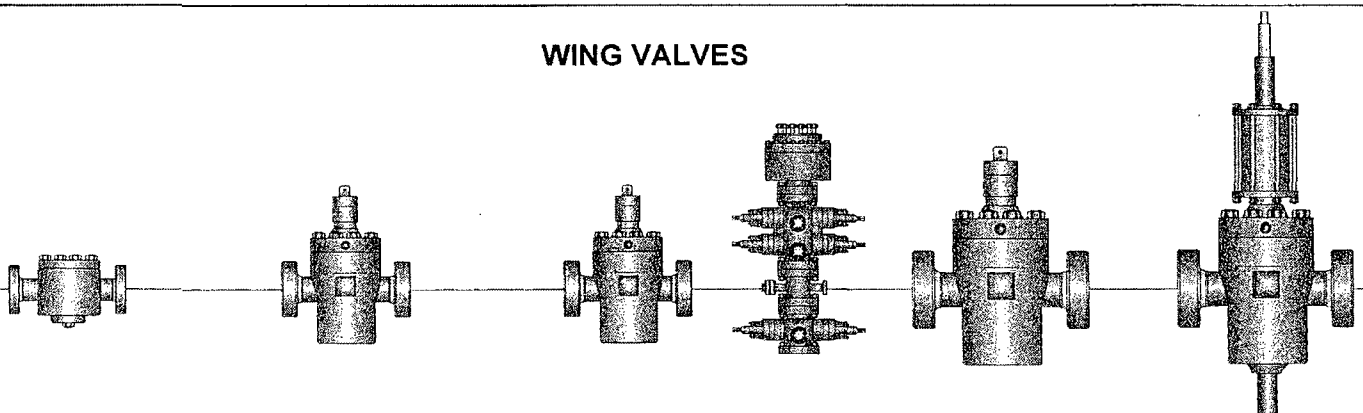
STYLE: New Cameron Type U

BORE 13 5/8" PRESSURE 10,000

RAMS: 5" Pipe

HEIGHT: 41 5/8" WEIGHT: 13,000 lbs

### WING VALVES



2" Check Valve

2" Manual Valve

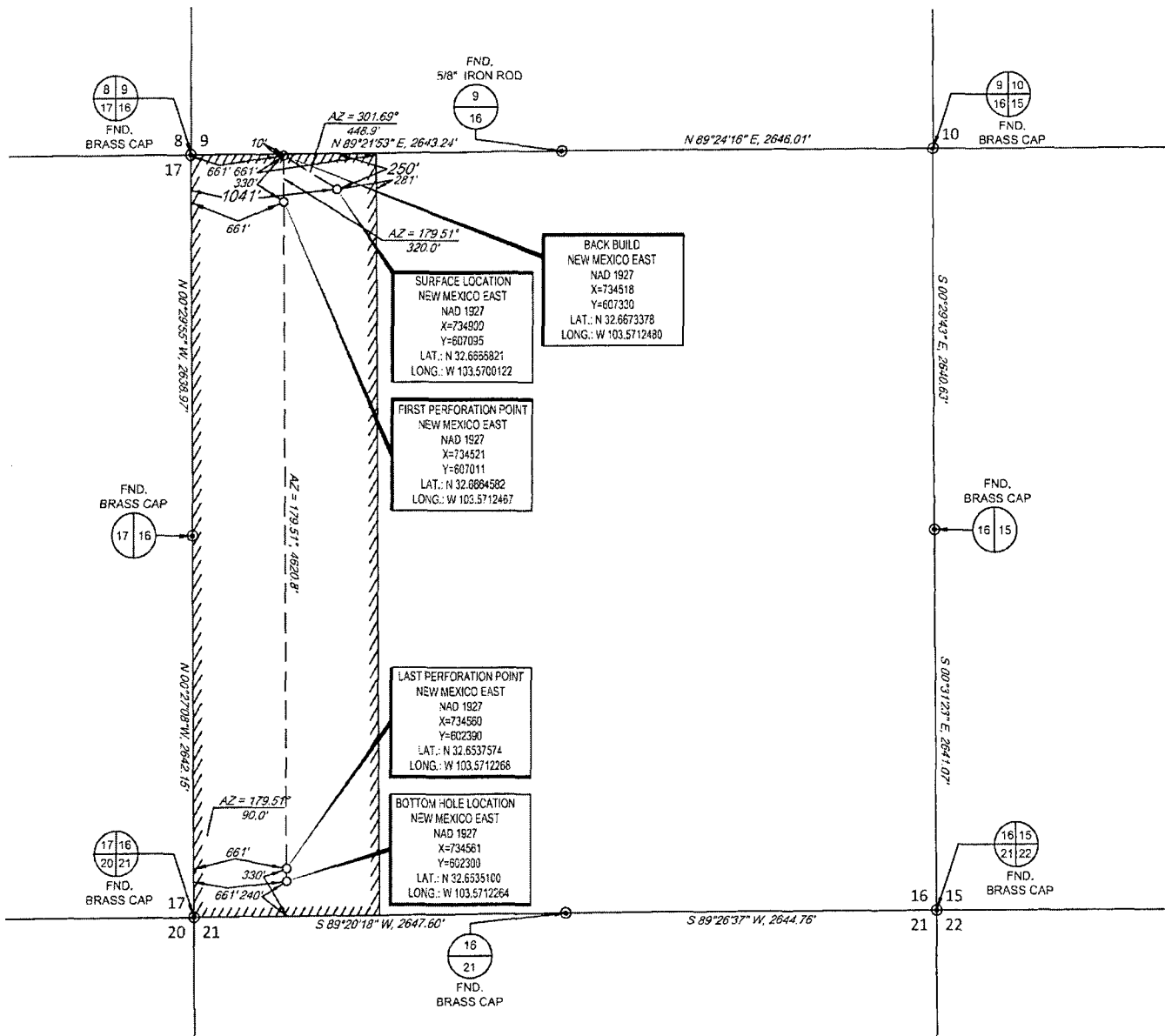
2" Manual Valve

4" Manual Valve

4" Hydraulic Valve

MAR 26 2014

SECTION 16, TOWNSHIP 19 SOUTH, RANGE 34 EAST, N.M.P.M.  
LEA COUNTY, NEW MEXICO



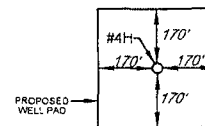
SCALE: 1" = 1000'  
0' 500' 1000'

LEASE NAME & WELL NO.: CIMAARRON COM #3H

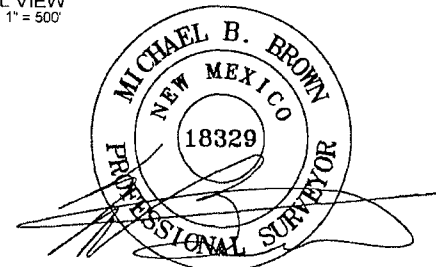
SECTION 16 TWP 19-S RGE 34-E SURVEY N.M.P.M.  
COUNTY LEA STATE NM  
DESCRIPTION 250' FNL & 1041' FWL

DISTANCE & DIRECTION FROM INT. OF NM-529 & NM-238 GO WEST  
ON NM-529 ±5.7 MILES. THENCE SOUTHWEST (LEFT) ON CO. RD. 55  
±4.7 MILES TO A POINT ±3300 FEET SOUTHEAST OF THE LOCATION.

SECTION LINE



DETAIL VIEW  
SCALE: 1" = 500'



Michael Blake Brown, P.S. No. 18329  
MARCH 12, 2013