

RECEIVED

MAR 26

RECEIVED

DISTRICT I

1625 N. French Dr., Hobbs, NM 88240
Phone (505) 335-5151 Fax: (505) 335-0720

DISTRICT II

811 S. First St., Artesia, NM 88210
Phone (505) 748-1283 Fax: (505) 748-0720

DISTRICT III

1000 Rio Brazos Rd., Aztec, NM 87410
Phone (505) 334-6178 Fax: (505) 334-6170

DISTRICT IV

1220 S. St. Francis Dr., Santa Fe, NM 87506
Phone (505) 476-3480 Fax: (505) 476-3483State of New Mexico
Energy, Minerals and Natural Resources Department

OIL CONSERVATION DIVISION

1220 South St. Francis Dr.
Santa Fe, New Mexico 87505Form C-102
Revised August 1, 2011Submit one copy to appropriate
District Office

HOBBES OGD

☐ AMENDED REPORT

WELL LOCATION AND ACREAGE DEDICATION PLAT

API Number 30-025-41756	Pool Code 75600	Pool Name Crossroads, San Andres, South (GAS)
Property Code 38224	Property Name STATE CA	Well Number 2
GRID No. 217598	Operator Name ASPEN OPERATING COMPANY, LLC	Elevation 4019'

Surface Location

UL or lot No.	Section	Township	Range	Lot Idn	Feet from the	North/South line	Feet from the	East/West line	County
P	9	10 S	36 E		422	SOUTH	330	EAST	LEA

Bottom Hole Location If Different From Surface

UL or lot No.	Section	Township	Range	Lot Idn	Feet from the	North/South line	Feet from the	East/West line	County

Dedicated Acres 160	Joint or Infill	Consolidation Code	Order No.
-------------------------------	-----------------	--------------------	-----------

NO ALLOWABLE WILL BE ASSIGNED TO THIS COMPLETION UNTIL ALL INTERESTS HAVE BEEN CONSOLIDATED
OR A NON-STANDARD UNIT HAS BEEN APPROVED BY THE DIVISION

N.: 890805.5 E.: 865487.2 NAD 83		N.: 890558.8 E.: 870764.0 NAD 83	OPERATOR CERTIFICATION I hereby certify that the information contained herein is true and complete to the best of my knowledge and belief, and that this organization either owns a working interest or unleased mineral interest in the land including the proposed bottom hole location or has a right to drill this well at this location pursuant to a contract with an owner of such a mineral or working interest, or to a voluntary pooling agreement or a compulsory pooling order heretofore entered by the Division. Signature: <i>Michael Wilson</i> Date: 3/25/14 Printed Name: Michael Wilson Email Address: mwilson@aspen-oil.com
			SURVEYOR CERTIFICATION I hereby certify that the well location shown on this plat was plotted from field notes of actual surveys made by me or under my supervision and that the same is true and correct to the best of my belief. Date Surveyed: MARCH 14, 2014 Signature: <i>[Signature]</i> Professional Surveyor Certificate No. 7977 State of New Mexico Surveyor
N.: 894532.4 E.: 865534.7 NAD 83	SURFACE LOCATION Lot - N 32°27'20.03" Long - W 103°15'14.86" NWSPCE - N 870493.7 E 894998.1 (NAD-83)	N.: 894579.0 S.L. E.: 870828.9 NAD 83	SCALE: 1" = 1000' WO Num.: 30142

MAR 31 2014

RECEIVED

DISTRICT I
1022 N. French Dr., Hobbs, NM 88240
Phone (505) 393-6151 Fax: (505) 393-0720

DISTRICT II
811 S. First St., Artesia, NM 88210
Phone (505) 748-1283 Fax: (505) 748-0720

DISTRICT III
1000 Rio Brazos Rd., Aztec, NM 87410
Phone (505) 334-6178 Fax: (505) 334-6170

DISTRICT IV
1220 S. St. Francis Dr., Santa Fe, NM 87506
Phone (505) 478-3400 Fax: (505) 478-3402

State of New Mexico
Energy, Minerals and Natural Resources Department

OIL CONSERVATION DIVISION
1220 South St. Francis Dr.
Santa Fe, New Mexico 87505

Form C-102
Revised August 1, 2011

Submit one copy to appropriate District Office

HOBBS OGD

WELL LOCATION AND ACREAGE DEDICATION PLAT

☐ AMENDED REPORT

API Number 30-025-41756	Pool Code 97790	Pool Name Wildcat; 5093634A; Morrae (GA5)
Property Code 38224	Property Name STATE CA	Well Number 2
GRID No. 217598	Operator Name ASPEN OPERATING COMPANY, LLC	Elevation 4019'

Surface Location

UL or lot No.	Section	Township	Range	Lot Idn	Feet from the	North/South line	Feet from the	East/West line	County
P	9	10 S	36 E		422	SOUTH	330	EAST	LEA

Bottom Hole Location If Different From Surface

UL or lot No.	Section	Township	Range	Lot Idn	Feet from the	North/South line	Feet from the	East/West line	County
Dedicated Acres 320	Joint or Infill	Consolidation Code	Order No.						

NO ALLOWABLE WILL BE ASSIGNED TO THIS COMPLETION UNTIL ALL INTERESTS HAVE BEEN CONSOLIDATED
OR A NON-STANDARD UNIT HAS BEEN APPROVED BY THE DIVISION

N: 899805.5 E: 865487.2 NAD 83		N: 899858.8 E: 870764.0 NAD 83	<p>OPERATOR CERTIFICATION</p> <p>I hereby certify that the information contained herein is true and complete to the best of my knowledge and belief, and that this organization either owns a working interest or unleased mineral interest in the land including the proposed bottom hole location or has a right to drill this well at this location pursuant to a contract with an owner of such a mineral or working interest, or to a voluntary pooling agreement or a compulsory pooling order heretofore entered by the division.</p> <p>Signature: <i>Michael Wilson</i> Date: 3/25/14</p> <p>Printed Name: Michael Wilson</p> <p>Email Address: mwilson@aspen-oil.com</p>
			<p>SURVEYOR CERTIFICATION</p> <p>I hereby certify that the well location shown on this plat was plotted from field notes of actual surveys made by me or under my supervision and that the same is true and correct to the best of my belief.</p> <p>Date Surveyed: MARCH 14, 2014</p> <p>Signature: <i>[Signature]</i> State of NEW MEXICO</p> <p>Professional Surveyor: 7977</p> <p>Certificate: 7977</p> <p>Basin: SOUTHERN</p>
<p>SURFACE LOCATION</p> <p>Lat - N 32°27'20.03"</p> <p>Long - W 103°15'14.86"</p> <p>NMSPCE - N 870493.7</p> <p>E 894998.1</p> <p>(NAD-83)</p>			<p>Scale: 1" = 1000'</p> <p>WO Num: 30142</p>

RECEIVED

DISTRICT I

1825 N. French Dr., Hobbs, NM 88240
Phone (505) 303-8151 Fax: (505) 393-0720

DISTRICT II

811 S. First St., Artesia, NM 88210
Phone (505) 748-1255 Fax: (505) 748-0725

DISTRICT III

1000 Rio Brazos Rd., Artec, NM 87410
Phone (505) 334-6178 Fax: (505) 334-6170

DISTRICT IV

1220 S. St. Francis Dr., Santa Fe, NM 87506
Phone (505) 476-3400 Fax: (505) 476-3462State of New Mexico
Energy, Minerals and Natural Resources Department

OIL CONSERVATION DIVISION

1220 South St. Francis Dr.
Santa Fe, New Mexico 87505

Form C-102

Revised August 1, 2011

Submit one copy to appropriate
District Office

HOBBS OGD

WELL LOCATION AND ACREAGE DEDICATION PLAT

☐ AMENDED REPORT

API Number 30-025-41756	Pool Code 13560	Pool Name Crossroads; Devonian, South
Property Code 38224	Property Name STATE CA	Well Number 2
OGRID No. 217598	Operator Name ASPEN OPERATING COMPANY, LLC	Elevation 4019'

Surface Location

UL or lot No.	Section	Township	Range	Lot Idn	Feet from the	North/South line	Feet from the	East/West line	County
P	9	10 S	36 E		422	SOUTH	330	EAST	LEA

Bottom Hole Location If Different From Surface

UL or lot No.	Section	Township	Range	Lot Idn	Feet from the	North/South line	Feet from the	East/West line	County

Dedicated Acres 80	Joint or Infill	Consolidation Code	Order No.
------------------------------	-----------------	--------------------	-----------

NO ALLOWABLE WILL BE ASSIGNED TO THIS COMPLETION UNTIL ALL INTERESTS HAVE BEEN CONSOLIDATED
OR A NON-STANDARD UNIT HAS BEEN APPROVED BY THE DIVISION

N: 899605.5 E: 865487.2 NAD 83		N: 899658.8 E: 870764.0 NAD 83	OPERATOR CERTIFICATION I hereby certify that the information contained herein is true and complete to the best of my knowledge and belief, and that this organization either owns a working interest or unleased mineral interest in the land including the proposed bottom hole location or has a right to drill this well at this location pursuant to a contract with an owner of such a mineral or working interest, or to a voluntary pooling agreement or a compulsory pooling order heretofore entered by the division. Signature: <u>Michael Wilson</u> Date: <u>3/25/14</u> Printed Name: <u>Michael Wilson</u> Email Address: <u>m.wilson@aspen-oil.com</u>
			SURVEYOR CERTIFICATION I hereby certify that the well location shown on this plat was plotted from field notes of actual surveys made by me or under my supervision and that the same is true and correct to the best of my belief. Date Surveyed: <u>MARCH 14, 2014</u> Signature: <u>[Signature]</u> Professional Surveyor: <u>7977</u> Certificate: <u>Basin Survey</u>
			SCALE: 1" = 1000' WO Num.: 30142

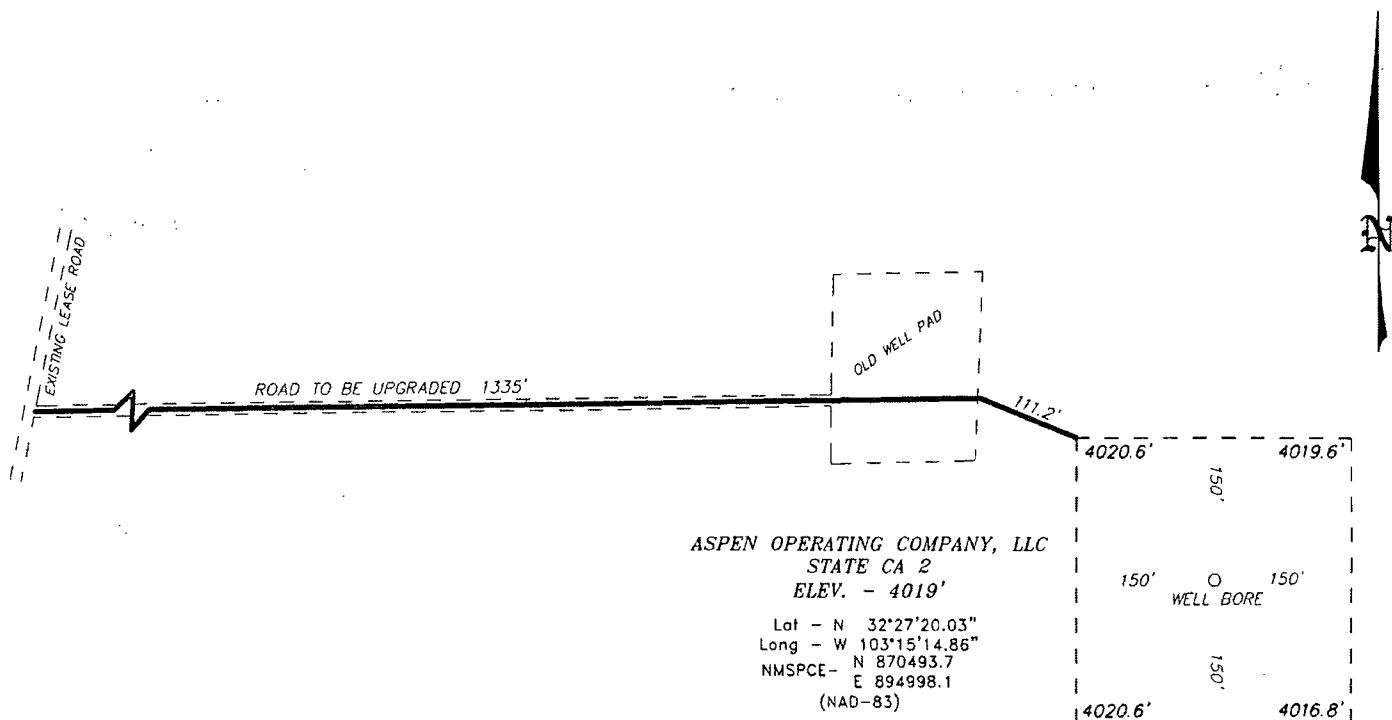
SURFACE LOCATION
 Lat - N 32°27'20.03"
 Long - W 103°15'14.86"
 NAD83 - N 870493.7
 E 894998.1
 (NAD-83)

N: 894532.4
 E: 865534.7
 NAD 83

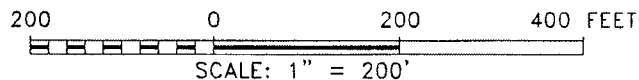
N: 894579.0 S.L.
 E: 870828.9
 NAD 83

Per AM

SECTION 9, TOWNSHIP 20 SOUTH, RANGE 36 EAST, N.M.P.M.,
LEA COUNTY, NEW MEXICO.



TATUM, NM IS ±14 MILES TO THE SOUTHWEST OF LOCATION.



Directions to Location:

FROM MILE MARKER 5 OF HWY 508, GO SOUTHEAST
0.1 MILES TO LEASE ROAD, GO SOUTHERLY ON
LEASE ROAD FOR 3.4 MILES TURNING WEST 0.7
MILES TURNING BACK SOUTH 0.2 MILES TO
PROPOSED LEASE ROAD TO BE UPGRADED.



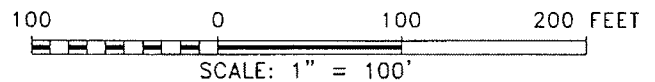
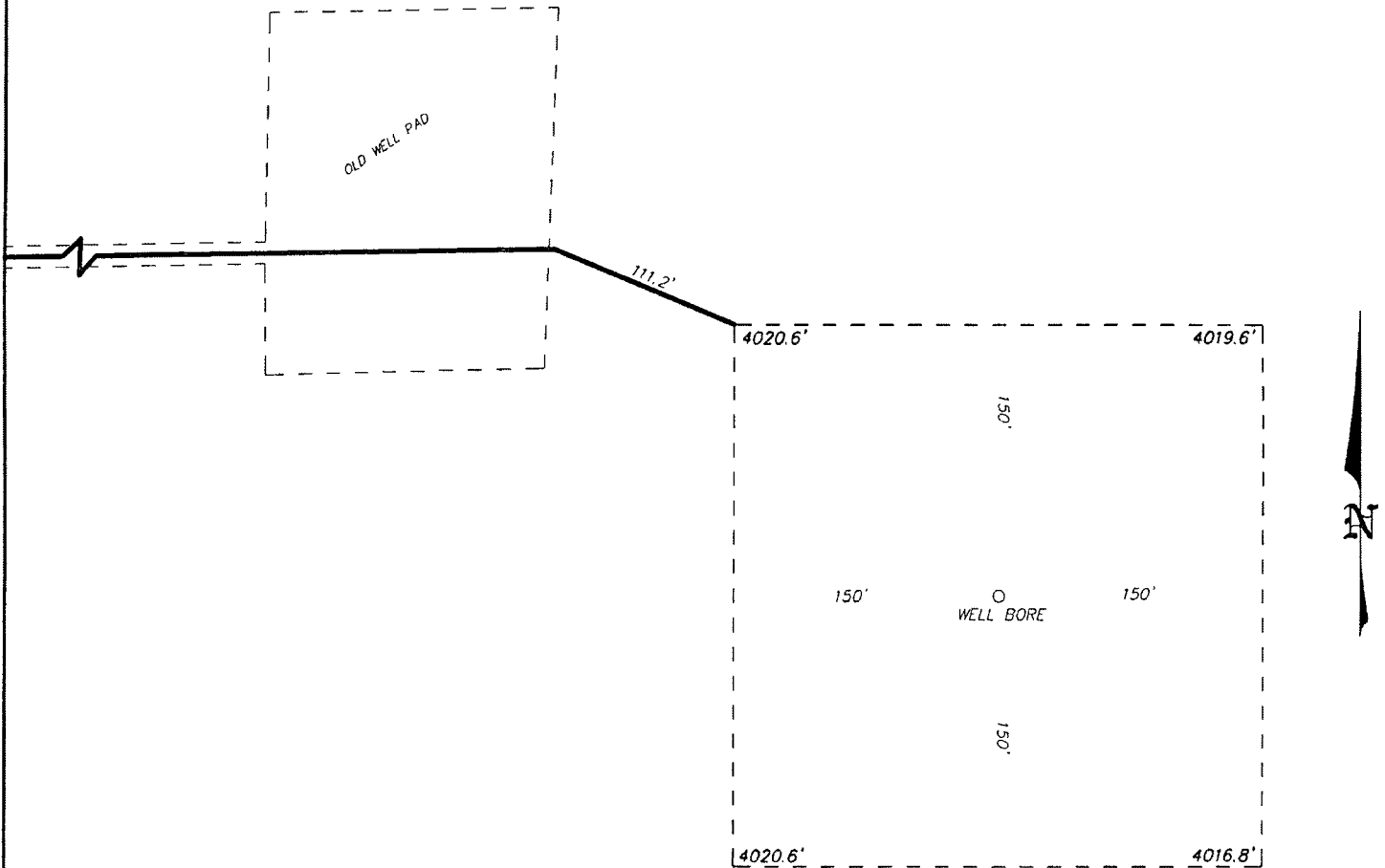
P.O. Box 1786 (575) 393-7316 -- Office
1120 N. West County Rd. (575) 392-2206 -- Fax
Hobbs, New Mexico 88241 businsurveys.com

ASPEN OPERATING COMPANY, LLC

REF: STATE CA 2 / WELL PAD TOPO

THE STATE CA 2 LOCATED 422' FROM
THE SOUTH LINE AND 330' FROM THE EAST LINE OF
SECTION 9, TOWNSHIP 10 SOUTH, RANGE 36 EAST,
N.M.P.M., LEA COUNTY, NEW MEXICO.

SECTION 9, TOWNSHIP 20 SOUTH, RANGE 36 EAST, N.M.P.M.,
LEA COUNTY, NEW MEXICO.



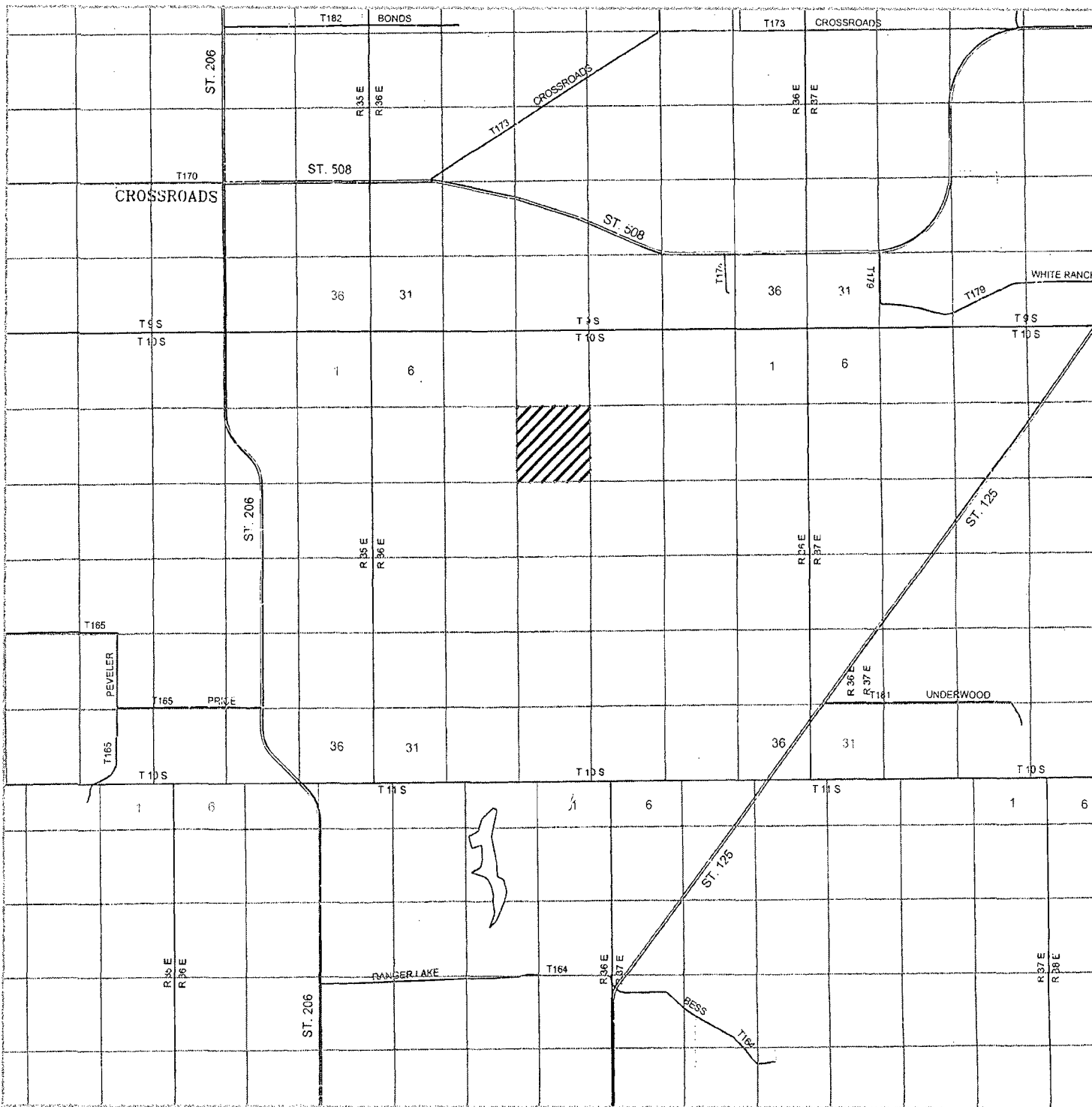
ASPEN OPERATING COMPANY, LLC

REF: STATE CA 2 / WELL PAD TOPO

THE STATE CA 2 LOCATED 422' FROM
THE SOUTH LINE AND 330' FROM THE EAST LINE OF
SECTION 9, TOWNSHIP 10 SOUTH, RANGE 36 EAST,
N.M.P.M., LEA COUNTY, NEW MEXICO.

**Aspen
surveys**
focused on excellence
in the oilfield

P.O. Box 1786 (575) 393-7316 - Office
1120 N. West County Rd. (575) 392-2206 - Fax
Hobbs, New Mexico 88241 aspen-surveys.com



STATE CA 2

Located 422' FSL and 330' FEL
 Section 9, Township 10 South, Range 36 East,
 N.M.P.M., Lea County, New Mexico.

Basin
surveys
 focused on excellence
 in the oilfield

P.O. Box 1786
 1120 N. West County Rd
 Hobbs, New Mexico 88241
 (575) 393-7315 - Office
 (575) 392-2206 - Fax
 basin-surveys.com

0 1 MI 2 MI 3 MI 4 MI
 SCALE: 1" = 2 MILES
 W.O. Number JMS 30142
 Survey Date: 03-04-2014
 YELLOW TINT - USA LAND
 BLUE TINT - STATE LAND
 NATURAL COLOR - FEE LAND

ASPEN
OPERATING
COMPANY, LLC



STATE CA 2

Located 422' FSL and 330' FEL
 Section 9, Township 10 South, Range 36 East,
 N.M.P.M., Lea County, New Mexico.

basin
surveys

focused on excellence
 in the oilfield

P.O. Box 1786
 1120 N. West County Rd
 Hobbs, New Mexico 88241
 (575) 393-7316 - Office
 (575) 392-2200 - Fax
 basin-surveys.com

0' 1000' 2000' 3000' 4000'

SCALE: 1" = 2000'

W.O. Number: JMS 30142

Survey Date: 03-04-2014

YELLOW TINT - USA LAND
 BLUE TINT - STATE LAND
 NATURAL COLOR - FEE LAND

ASPEN
OPERATING
COMPANY, LLC

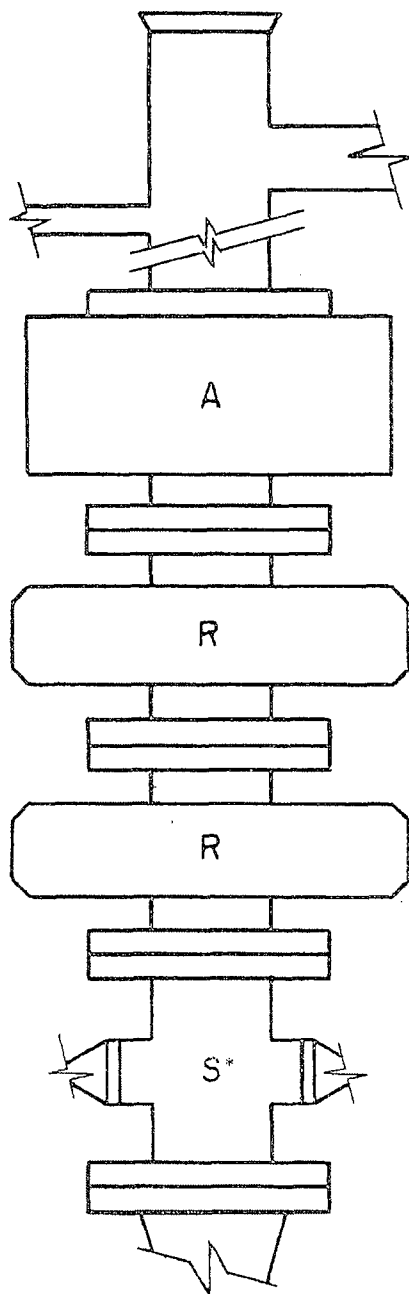


FIG. 2.C.5
ARRANGEMENT S*RRR
Double Ram Type Preventers, R_d, Optional.

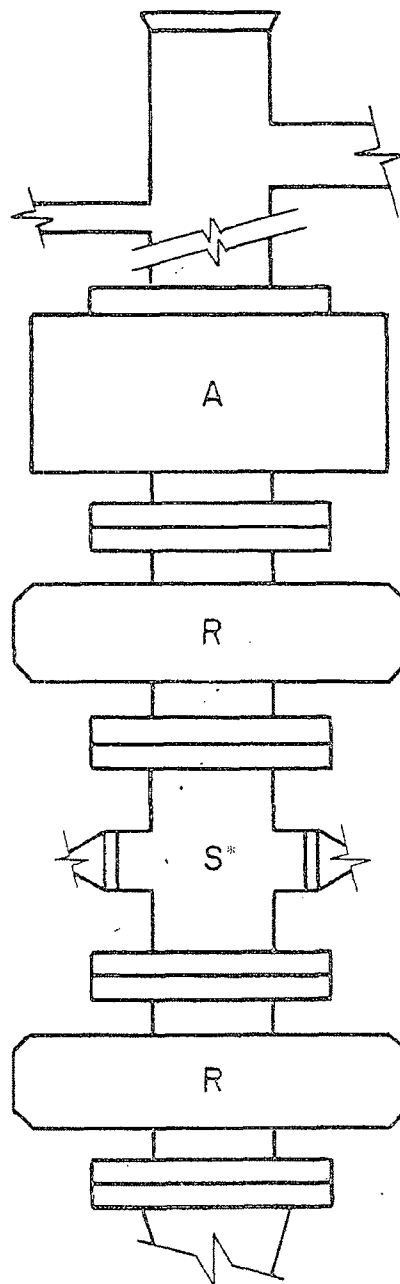


FIG. 2.C.6
ARRANGEMENT RS*RA

EXAMPLE BLOWOUT PREVENTER
ARRANGEMENTS FOR 3M AND 5M RATED
WORKING PRESSURE SERVICE —
SURFACE INSTALLATION

*Drilling spool and its location in the stack arrangement is optional — refer to Par. 2.C.6.

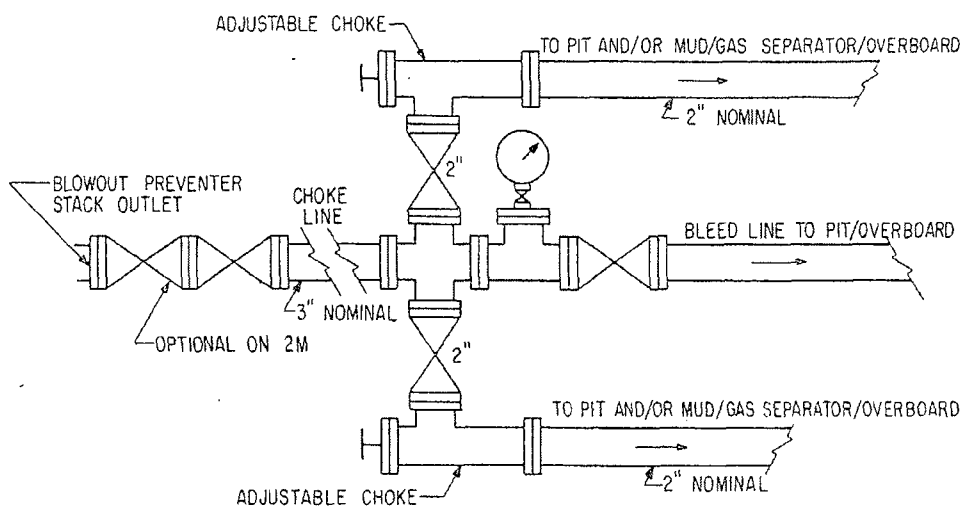


FIG. 3.A.1
EXAMPLE CHOKE MANIFOLD ASSEMBLY
FOR 2M AND 3M RATED WORKING
PRESSURE SERVICE — SURFACE INSTALLATION

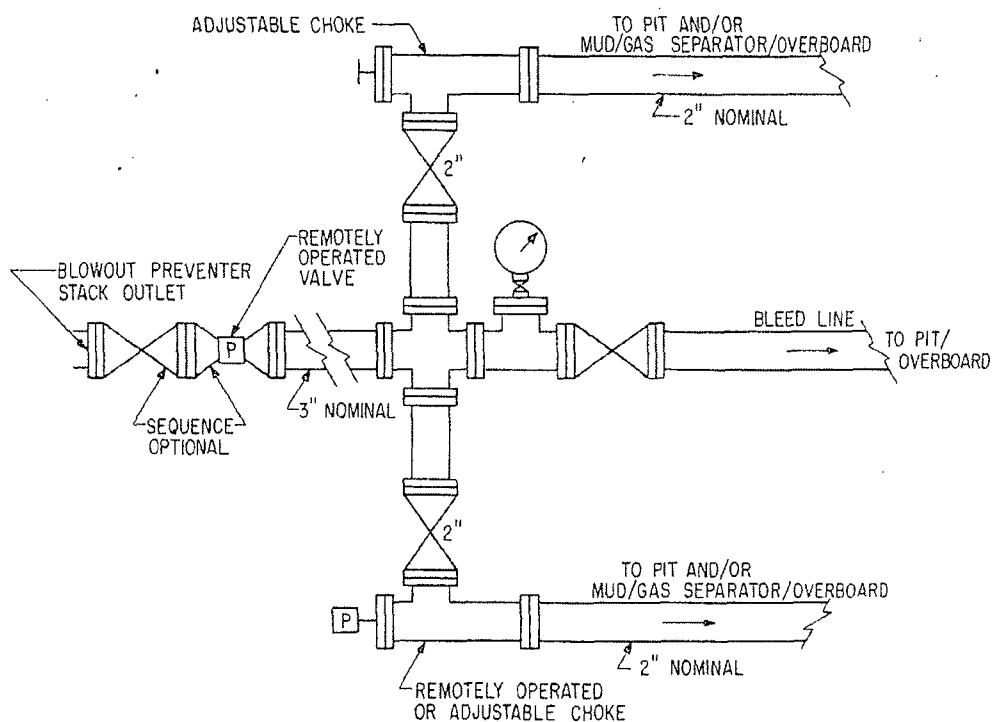


FIG. 3.A.2
EXAMPLE CHOKE MANIFOLD ASSEMBLY FOR 5M
RATED WORKING PRESSURE SERVICE —
SURFACE INSTALLATION



Aspen Operating Company, L.L.C.

Proposed Wellbore Diagram (State CA #2 New Drill)

(*Intangibles Risked +15%)

Well Name: State CA #2

County/State: Lea, New Mexico

Location: 422' FSL, 330' FEL Congress Section

Section 9, Twp. 10 S, Range 36 E

Lat: 33°27'20.017", Long: 103°15'14.878" (NAD 83)

N 894998.07, E 870493.73 (NMSPCE)

API: 30-025-

Field: Crossroads South

Elevation:

