

Surface Use Plan
COG Operating, LLC
Flat Head Fed Com Fed 6H
SL: 1115' FNL & 1650' FEL UL B
Section 14, T-17-S, R-32-E
BHL: 330' FNL & 1650' FEL UL B
Section 11, T-17-S, R-32-E
Lea County, New Mexico

30-025-41759

HOBBS OCD

MAR 27 2014

RECEIVED

Surface Use & Operating Plan

Flat Head Fed Com 6H

- Surface Owner: Olane Caswell, 1702 Gillham, Brownfield, TX 79316.
- New Road: approx. 1,083.7
- Flow Line: ~~approx. 200'~~
- Facilities: Flat Head Fed Com 6H Tank Battery

Well Site Information

V Door: West

Topsoil: East

Interim Reclamation: South/East

Notes

-N/A

Onsite: 5/9/2013

Legion (BLM), Caden Jameson (COG), Gary Box (P.C.)

APR 01 2014

SURFACE USE AND OPERATING PLAN

1. Existing & Proposed Access Roads

- A. The well site survey and elevation plat for the proposed well is attached with this application. It was staked by Prosperity Consultants, LLC, Midland, TX.
- B. All roads to the location are shown in the Vicinity Map. The existing lease roads are illustrated and are adequate for travel during drilling and production operations. Upgrading existing roads prior to drilling the well will be done where necessary. The road route to the well site is depicted in Vicinity Map. The road highlighted in the Vicinity Map will be used to access the well.
- C. Directions to location: See Vicinity Map.
- D. Routine grading and maintenance of existing roads will be conducted as necessary to maintain their condition as long as any operations continue on this lease. Roads will be maintained according to specifications in section 2A of this Surface Use and Operating Plan.

2. Proposed Access Road:

The Elevation Plat shows that 1,083.7' of new access road will be required for this location. If any road is required it will be constructed as follows:

- A. The maximum width of the running surface will be 14'. The road will be crowned, ditched and constructed of 6" rolled and compacted caliche. Ditches will be at 3:1 slope and 4 feet wide. Water will be diverted where necessary to avoid ponding, prevent erosion, maintain good drainage, and to be consistent with local drainage patterns.
- B. The average grade will be less than 1%.
- C. No turnouts are planned.
- D. No culverts, cattleguard, gates, low water crossings or fence cuts are necessary.
- E. Surfacing material will consist of native caliche. Caliche will be obtained from the actual well site if available. If not available onsite, caliche will be hauled from the nearest BLM approved caliche pit.

3. Location of Existing Well:

The 1-mile Map shows all existing wells within a one-mile radius of this well.

As shown on this plat there are numerous wells producing from the San Andres and Yeso formations.

4. Location of Existing and/or Proposed Facilities:

- A. COG Operating LLC does operate a production facility on this lease.
- B. If the well is productive, contemplated facilities will be as follows:
 - 1) Production will be sent to Flat Head Federal Com #6H Tank Battery located in Section 14 in T17S R32E. The facility location is shown in Exhibit #1.
 - 2) The tank battery and facilities including all flow lines and piping will be installed according to API specifications.
 - 3) Any additional caliche will be obtained from the actual well site. If caliche does not exist or is not plentiful from the well site, the caliche will be hauled from a BLM approved caliche pit. Any additional construction materials will be purchased from contractors.
 - 4) Proposed flow lines, will follow an archaeologically approved route to Flat Head Federal Com #6H Tank Battery located in Section 14 in T17S R32E. The flowline will be SDR 7 3" poly line laid on the surface and will be approximately 200 feet in length. See Exhibit 1.
 - 5) It will be necessary to run electric power if this well is productive. Power will be provided by CVE and they will submit a separate plan and ROW for service to the well location.
 - 6) If the well is productive, rehabilitation plans will include the following:
 - The original topsoil from the well site will be returned to the location, and the site will be re-contoured as close as possible to the original site.

5. Location and Type of Water Supply:

The well will be drilled with combination brine and fresh water mud system as outlined in the drilling program. The water will be obtained from commercial water stations in the area and hauled to location by transport truck over the existing and proposed access roads shown in Vicinity Map. If a commercial fresh water source is nearby, fast line may be laid along existing road ROW's and fresh water pumped to the well. No water well will be drilled on the location.

6. Source of Construction Materials and Location "Turn-Over" Procedure:

Obtaining caliche: The primary way of obtaining caliche to build locations and roads will be by "turning over" the location. This means, caliche will be obtained from the actual well sight. A caliche permit will be obtained from BLM prior to pushing up any caliche. 2400 cu. Yards is max amount of caliche needed for pad and roads. Amount will vary for each pad. The procedure below has been approved by BLM personnel:

- A. The top 6 inches of topsoil is pushed off and stockpiled along the side of the location.**
- B. An approximate 120' X 120' area is used within the proposed well site to remove caliche.**
- C. Subsoil is removed and piled alongside the 120' by 120' area within the pad site.**
- D. When caliche is found, material will be stock piled within the pad site to build the location and road.**
- E. Then subsoil is pushed back in the hole and caliche is spread accordingly across entire location and road.**
- F. Once well is drilled, the stock piled top soil will be used for interim reclamation and spread along areas where caliche is picked up and the location size is reduced. Neither caliche nor subsoil will be stock piled outside of the well pad. Topsoil will be stockpiled along the edge of the pad as depicted in attached plat.**
 - In the event that no caliche is found onsite, caliche will be hauled in from a BLM approved caliche pit.

7. Methods of Handling Water Disposal:

- A. The well will be drilled utilizing a closed loop mud system. Drill cuttings will be held in roll-off style mud boxes and taken to an NMOCD approved disposal site.
- B. Drilling fluids will be contained in steel mud pits.
- C. Water produced from the well during completion will be held temporarily in steel tanks and then taken to an NMOCD approved commercial disposal facility.
- D. Garbage and trash produced during drilling or completion operations will be collected in a trash bin and hauled to an approved landfill. No toxic waste or hazardous chemicals will be produced by this operation.
- E. Human waste and grey water will need to be properly contained and disposed of. Proper disposal and elimination of waste and grey water may include but are not limited to portable septic systems and/or portable waste gathering systems (i.e. portable toilets).
- F. After the rig is moved out and the well is either completed or abandoned, all waste materials will be cleaned up within 30 days. In the event of a dry hole only a dry hole marker will remain.

8. Ancillary Facilities:

No airstrip, campsite or other facilities will be built as a result of the operation on this well.

9. Well Site Layout:

- A. The drill pad layout, with elevations staked by Prosperity Consultants, LLC, is shown in the Elevation Plat. Dimensions of the pad and pits are shown on the Rig Layout. V door direction is West. Topsoil, if available, will be stockpiled per BLM specifications. Because the pad is almost level no major cuts will be required.
- B. The Rig Layout Closed-Loop exhibit shows the proposed orientation of closed loop system and access road. No permanent living facilities are planned, but a temporary foreman/toolpusher's trailer will be on location during the drilling operations.

10. Plans for Restoration of the Surface:

- A. Interim Reclamation will take place after the well has been completed. The pad will be downsized by reclaiming the areas not needed for production operations. The portions of the pad that are not needed for production operations will be re-contoured to its original state as much as possible. The caliche that is removed will be reused to either build another pad site or for road repairs within the lease. The stockpiled topsoil will then be spread out reclaimed area and reseeded with a BLM approved seed mixture. In the event that the well must be worked over or maintained, it may be necessary to drive, park, and/or operate machinery on reclaimed land. This area will be repaired or reclaimed after work is complete.
- B. Final Reclamation: Upon plugging and abandoning the well all caliche for well pad and lease road will be removed and surface will be recontoured to reflect its surroundings as much as possible. Caliche will be recycled for road repair or reused for another well pad within the lease. If any topsoil remains, it will be spread out and the area will be reseeded with a BLM approved mixture and re-vegetated as per BLM orders.

11. Surface Ownership:

- A. The surface owner for this site is Olane Caswell, 1702 Gillham, Brownfield, TX 79316.
- B. A surface use agreement has been reached with the surface owner, Olane Caswell, and a copy of this surface use agreement has been sent to Olane Caswell.
- C. The proposed road routes and surface location will be restored as directed by the BLM

12. Other Information:

- A. The area around the well site is grassland and the topsoil is sandy. The vegetation is moderately sparse with native prairie grasses, some mesquite and shinnery oak. No wildlife was observed but it is likely that mule deer, rabbits, coyotes and rodents traverse the area.
- B. There is no permanent or live water in the immediate area.
- C. There are no dwellings within 2 miles of this location.
- D. If needed, a Cultural Resources Examination is being prepared by Boone Arch Services of New Mexico, LLC. Carlsbad, NM, 88220. 506 E Chapman Rd. , phone # 575.887.7667 and the results will be forwarded to your office in the near future. Otherwise, **COG will be participating in the Permian Basin MOA Program.**

13. Bond Coverage:

Bond Coverage is Nationwide Bond # 000215

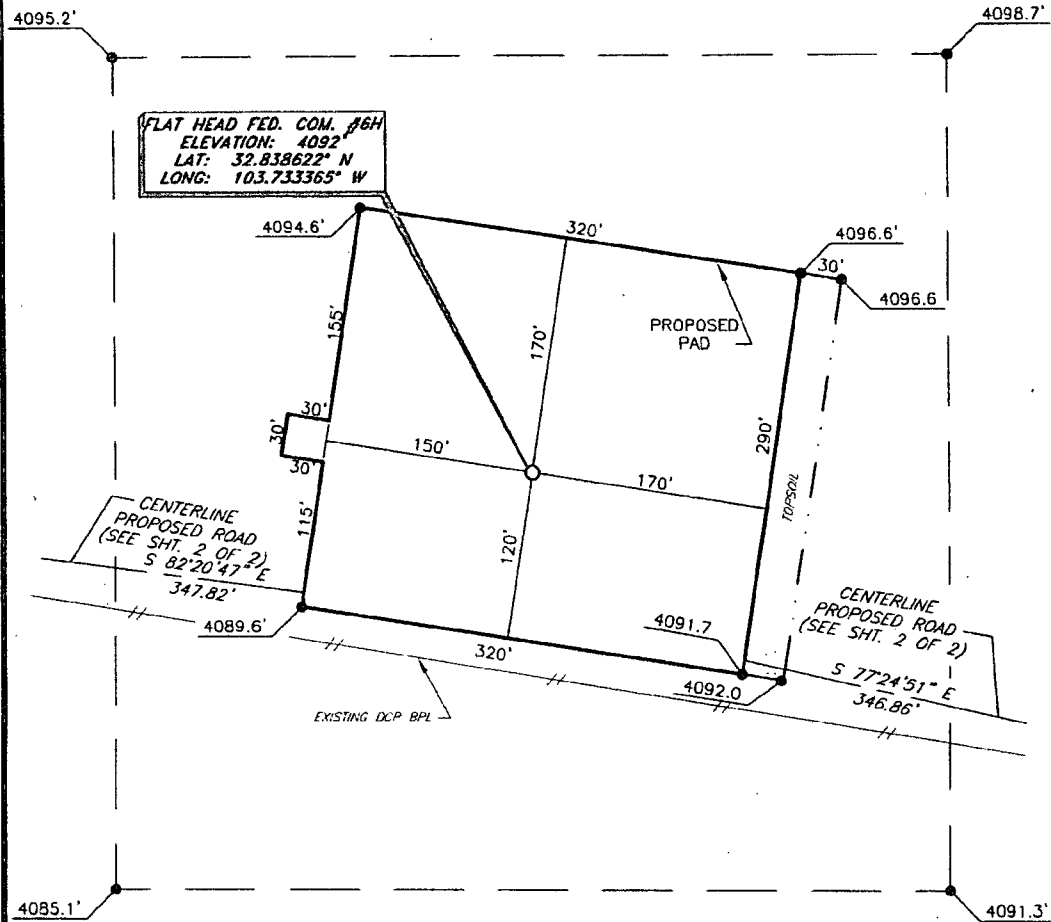
14. Lessee's and Operator's Representative:

The COG Operating LLC representative responsible for assuring compliance with the surface use plan is as follows:

| | |
|-------------------------------|-------------------------------|
| Jim Evans | Ray Peterson |
| Drilling Superintendent | Drilling Manager |
| COG Operating LLC | COG Operating LLC |
| One Concho Center | One Concho Center |
| 600 W. Illinois | 600 W. Illinois |
| Midland, TX 79701 | Midland, TX 79701 |
| Phone (432) 685-4304 (office) | Phone (432) 685-4304 (office) |
| (432) 221-0346 (business) | (432) 818-2254 (business) |

COG OPERATING, LLC

Flat Head Fed. Com. #6H
(1115' FNL & 1650' FEL)
Section 14, T-17-S, R-32-E,
N. M. P. M., Lea Co., New Mexico



DIRECTIONS TO LOCATION

From the intersection of Lease Rd. 126 (Maljamar Rd.) and Lease Rd. 125 (Mescalero):

Go Southeast on Mescalero Rd. approx. 1.5 mi;

Turn Left and go North thru the gate to the proposed road;

Follow road survey approx. 0.2 mi East to this location.

SCALE: 1" = 100'
0 50 100
BEARINGS ARE
MAG. 27° - NM EAST
DISTANCES ARE
GROUND.

Copyright 2012 - All Rights Reserved

| NO. | REVISION | DATE |
|---------------------|----------|------|
| JOB NO.: LS130118 | | |
| DWG. NO.: 130118PAD | | |

PROSPERITY CONSULTANTS, LLC



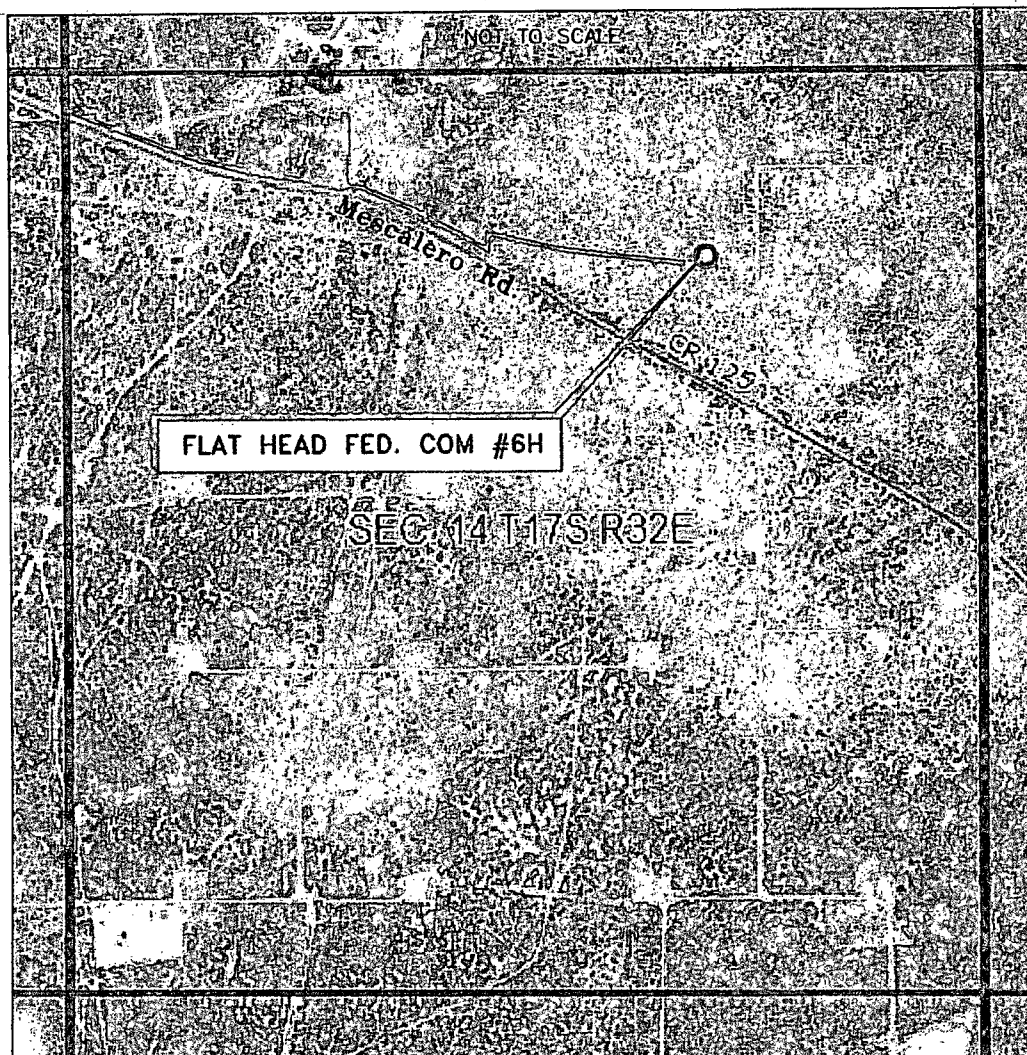
SCALE: 1" = 100'
DATE: 6/14/13
SURVEYED BY: GB/SM
DRAWN BY: DR
APPROVED BY: LWB
SHEET : 1 OF 2

2251 Double Creek Drive, Suite 602, Round Rock, Texas 78664

o (512) 992-2087 f (512) 251-2518

VICINITY MAP

NOT TO SCALE



*SECTION 14, TWP. 17 SOUTH, RGE. 32 EAST,
N. M. P. M., LEA COUNTY, NEW MEXICO*

OPERATOR: COG Operating, LLC
LEASE: Flat Head Fed. Com.
WELL NO.: 6H

LOCATION: 1115' FNL & 1650' FEL
ELEVATION: 4092'

Copyright 2012 - All Rights Reserved

| | | |
|--------------------|----------|------|
| | | |
| | | |
| | | |
| NO. | REVISION | DATE |
| JOB NO.: LS130118 | | |
| DWG. NO.: 130118VM | | |

PROSPERITY CONSULTANTS, LLC

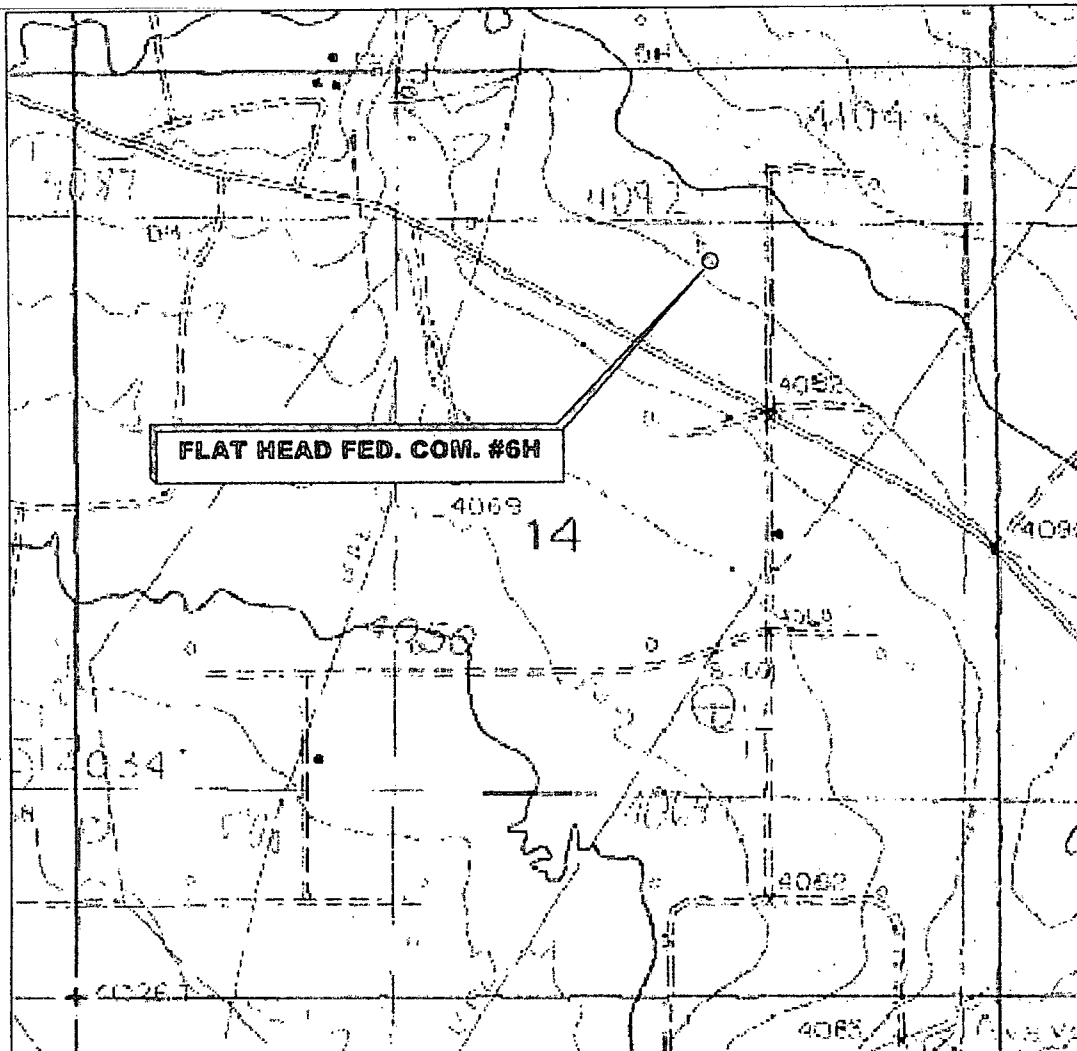


2251 Double Creek Drive, Suite 602, Round Rock, Texas 78664

o (512) 992-2087 f (512) 251-2518

| |
|--------------------|
| SCALE: N. T. S. |
| DATE: 6/14/13 |
| SURVEYED BY: GB/SM |
| DRAWN BY: DR |
| APPROVED BY: LWB |
| SHEET : 1 OF 1 |

LOCATION VERIFICATION MAP



SECTION 14, TWP. 17 SOUTH, RGE. 32 EAST,
N. M. P. M., LEA COUNTY, NEW MEXICO

OPERATOR: COG Operating, LLC
LEASE: Flat head Fed. Com.
WELL NO.: 6H
ELEVATION: 4092'

LOCATION: 1115' FNL & 1650' FEL
CONTOUR INTERVAL: 10'
USGS TOPO. SOURCE MAP:
Maljamar, NM (Prov. Ed. 1985)

Copyright 2012 - All Rights Reserved

| NO. | REVISION | DATE |
|-----------|-----------|------|
| JOB NO.: | LS130118 | |
| DWG. NO.: | 130118LVM | |

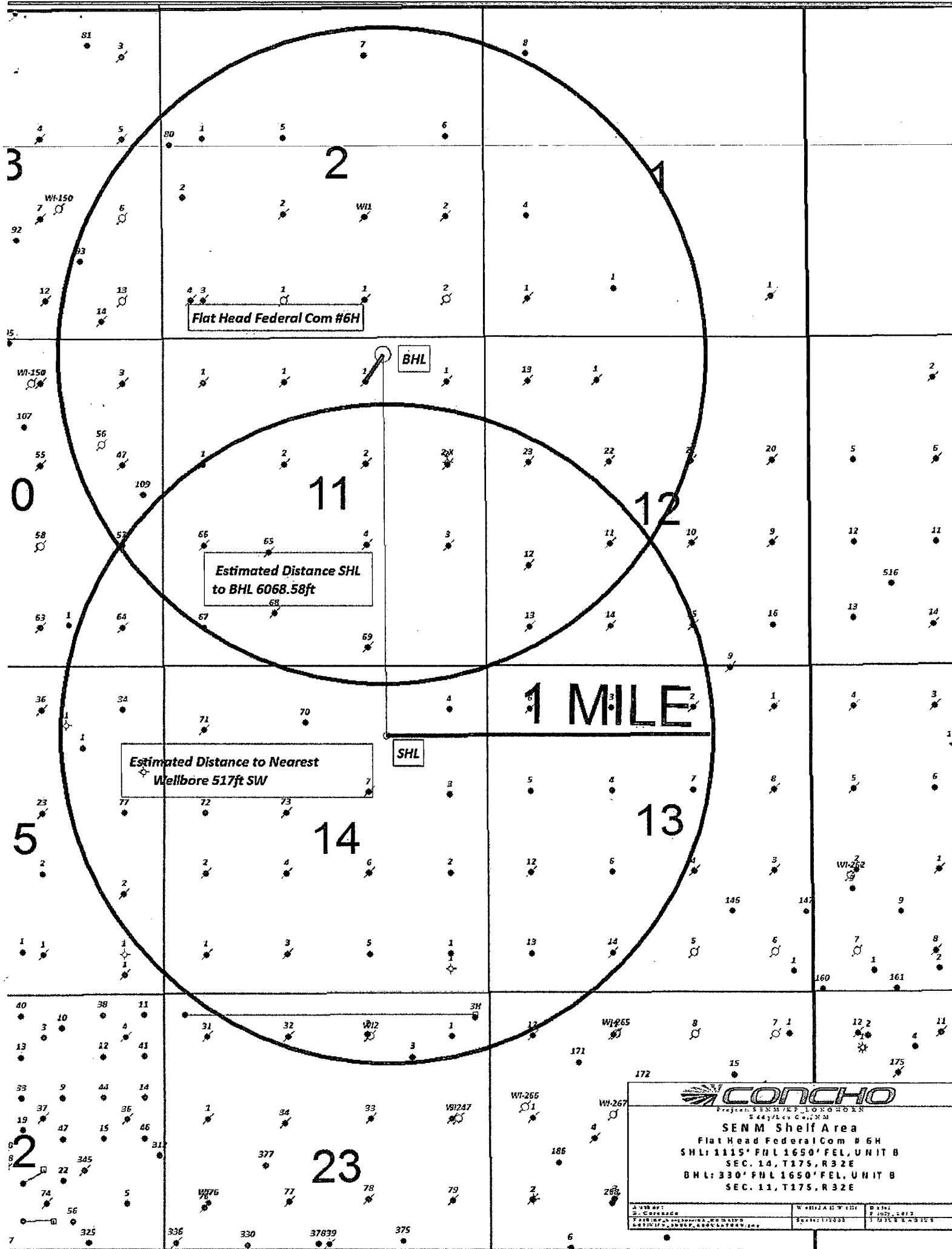
PROSPERITY CONSULTANTS, LLC

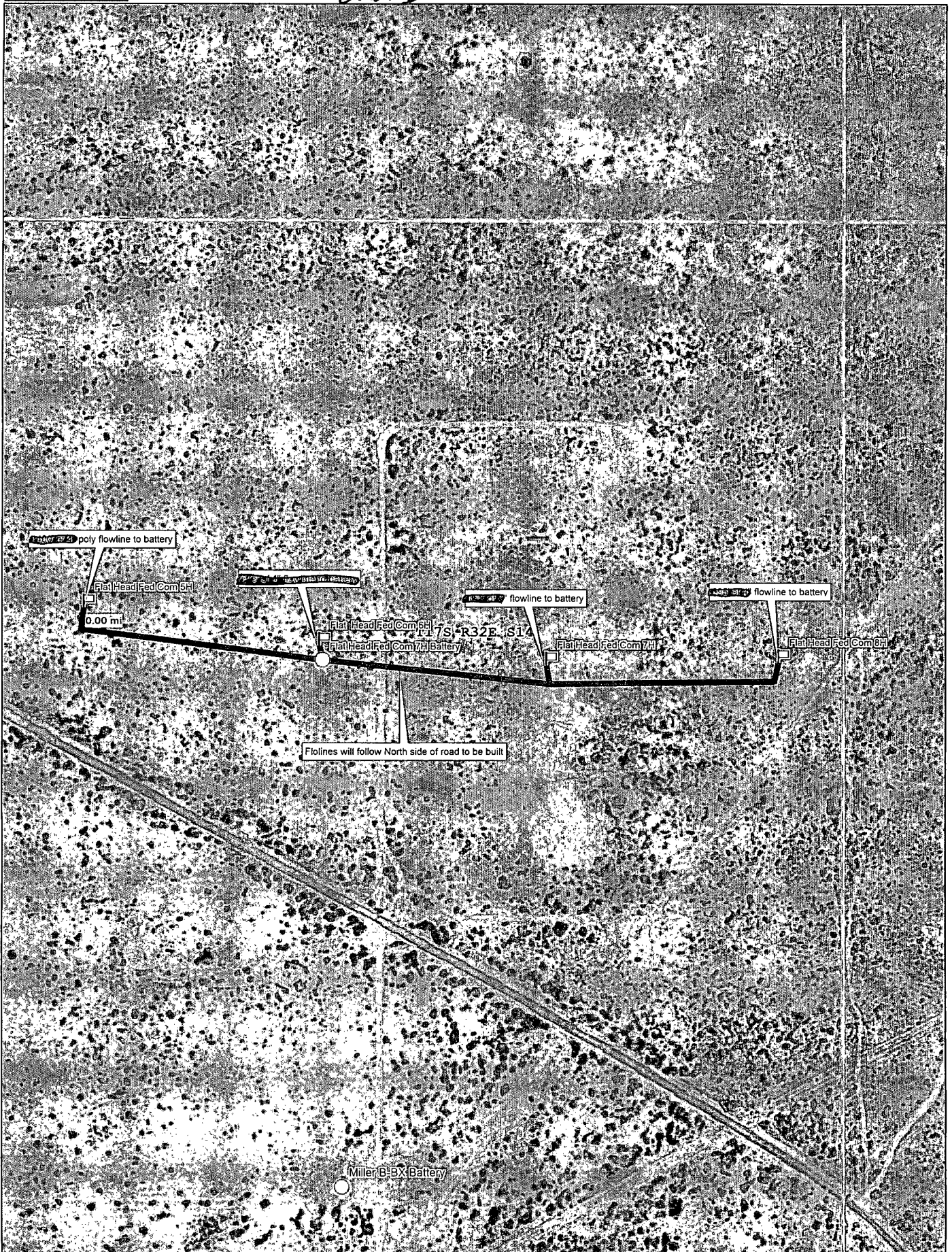


2251 Double Creek Drive, Suite 602, Round Rock, Texas 78664

o (512) 992-2087 f (512) 251-2518

SCALE: 1" = 1000'
DATE: 6/14/13
SURVEYED BY: GB/SM
DRAWN BY: DR
APPROVED BY: LWB
SHEET : 1 OF 1





Data use subject to license.

© DeLorme. XMap® 7.

www.delorme.com

