

HOBBS OGD

APR 03 2014

DISTRICT I
1625 N. French Dr., Hobbs, NM 88240
Phone: (575) 393-6161 Fax: (575) 393-0720

DISTRICT II
811 S. First St., Artesia, NM 88210
Phone: (575) 748-1283 Fax: (575) 748-9720

DISTRICT III
1000 Rio Brazos Blvd., Aztec, NM 87410
Phone: (505) 334-6178 Fax: (505) 334-6170

DISTRICT IV
1220 S. St. Francis Dr., Santa Fe, NM 87505
Phone: (505) 476-3460 Fax: (505) 476-3462

State of New Mexico
Energy, Minerals & Natural Resources Department
OIL CONSERVATION DIVISION
1220 South St. Francis Dr.
Santa Fe, New Mexico 87505

Form C-102
Revised August 1, 2011
Submit one copy to appropriate
District Office

AMENDED REPORT

WELL LOCATION AND ACREAGE DEDICATION PLAT

| | | | |
|-----------------------------------|---|----------------------------|---------------------------|
| API Number 30-025-41762 | Pool Code 33820 37240 | Pool Name Talmar | Well Number 601 |
| Property Code 312454 | Property Name COOPER JAL UNIT | | Elevation 3310' |
| OGRID No. 240974 | Operator Name LEGACY RESERVES | | |

Surface Location

| U/L or lot No | Section | Township | Range | Lot Idn | Feet from the | North/South line | Feet from the | East/West line | County |
|---------------|---------|----------|-------|---------|---------------|------------------|---------------|----------------|--------|
| B | 24 | 24-S | 36-E | | 420 | NORTH | 1690 | EAST | LEA |

Bottom Hole Location If Different From Surface

| U/L or lot No | Section | Township | Range | Lot Idn | Feet from the | North/South line | Feet from the | East/West line | County |
|-----------------|-----------------|--------------------|-----------|---------|---------------|------------------|---------------|----------------|--------|
| | | | | | | | | | |
| Dedicated Acres | Joint or Infill | Consolidation Code | Order No. | | | | | | |

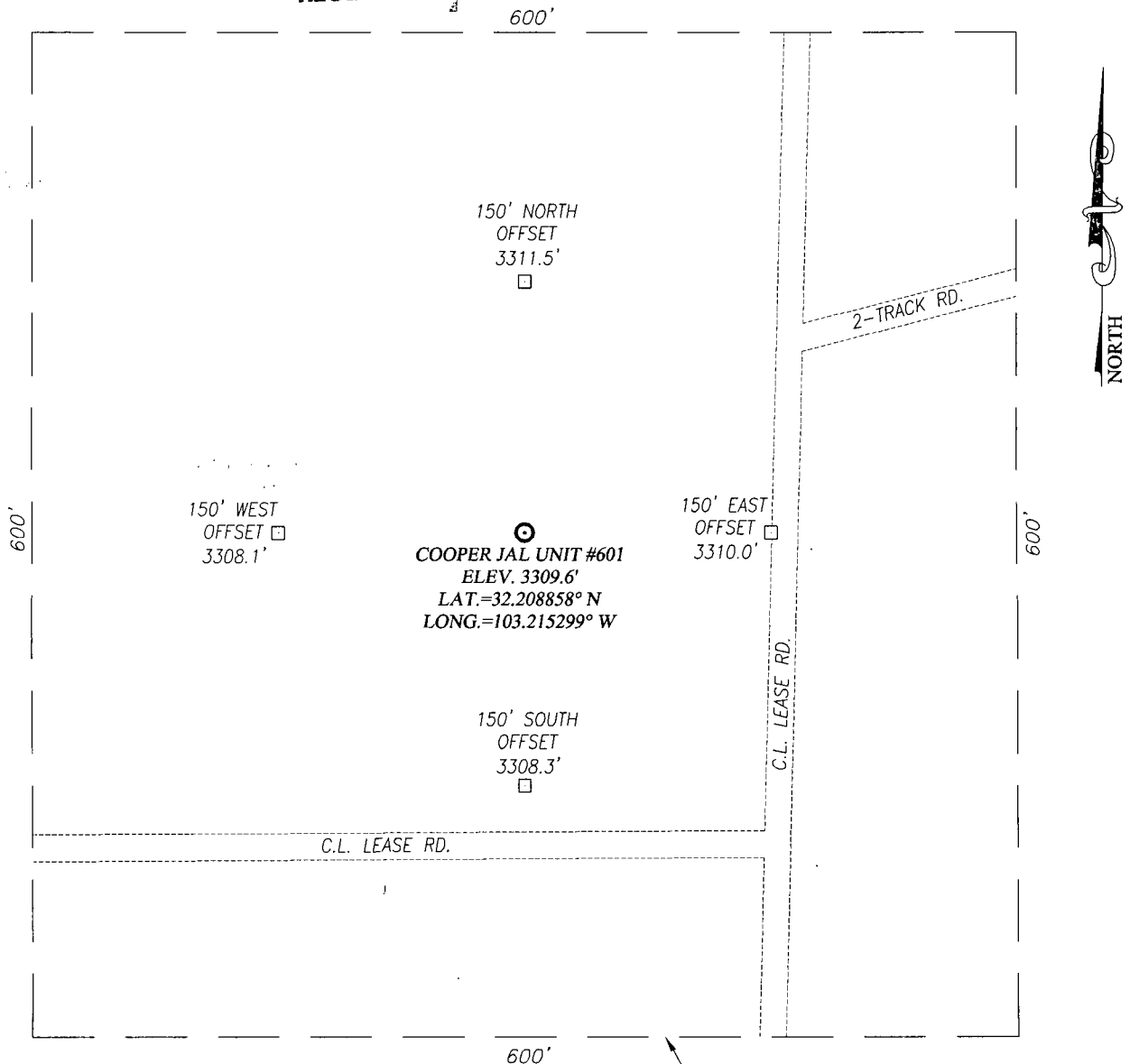
NO ALLOWABLE WILL BE ASSIGNED TO THIS COMPLETION UNTIL ALL INTERESTS HAVE BEEN CONSOLIDATED OR A NON-STANDARD UNIT HAS BEEN APPROVED BY THE DIVISION

| | | |
|--|---|---|
| | <p>GEODETIC COORDINATES NAD 27 NME</p> <p>SURFACE LOCATION Y=441500.8 N X=845806.4 E</p> <p>LAT.=32.208858° N LONG.=103.215299° W</p> | <p>OPERATOR CERTIFICATION</p> <p>I hereby certify that the information herein is true and complete to the best of my knowledge and belief, and that this organization either owns a working interest or unleased mineral interest in the land including the proposed bottom hole location or has a right to drill this well at this location pursuant to a contract with an owner of such mineral or working interest, or to a voluntary pooling agreement or a compulsory pooling order heretofore entered by the division.</p> <p><i>Martin Staelens</i> 4-3-14 Signature Date</p> <p>Martin Staelens Printed Name</p> <p>mstaelens@legacyp.com E-mail Address</p> |
| | | <p>SURVEYOR CERTIFICATION</p> <p>I hereby certify that the well location shown on this plat was plotted from field notes of actual surveys made by me or under my supervision, and that the same is true and correct to the best of my belief.</p> <p>MARCH 19, 2014 Date of Survey</p> <p>Signature & Seal of Professional Surveyor</p> <p><i>GARY J. EDISON</i> GARY J. EDISON 12641</p> <p>2014 MAR 20 11:21/2/14</p> <p>Certificate Number: Gary J. Edison 12641 Renald J. Edison 2279</p> <p>ACK REL. W/PT 151115 JWSC W/O 141102%</p> |
| | | |
| | | |

APR 07 2014

APR 03 2014

RECEIVED

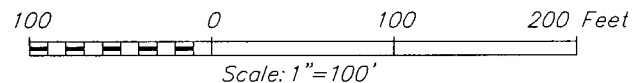


NOTE:
1) SEE "LOCATION VERIFICATION MAP"
FOR PROPOSED ROAD LOCATION.

— ARCHEOLOGICAL SURVEY BOUNDARY

DIRECTIONS TO COOPER JAL UNIT #601:

FROM THE INTERSECTION OF ST. HWY. 18 AND CO. RD. J7
(COOPER CEMETERY), GO WEST ALONG COOPER CEMETERY ROAD
APPROX. 1.2 MILES. TURN LEFT AND GO SOUTH APPROX. 400
FEET. THIS LOCATION IS APPROX. 150 FEET WEST OF ROAD.



LEGACY RESERVES

COOPER JAL UNIT #601 WELL
LOCATED 420 FEET FROM THE NORTH LINE
AND 1690 FEET FROM THE EAST LINE OF SECTION 24,
TOWNSHIP 24 SOUTH, RANGE 36 EAST, N.M.P.M.,
LEA COUNTY, NEW MEXICO



PROVIDING SURVEYING SERVICES
SINCE 1946
JOHN WEST SURVEYING COMPANY
412 N. DAL PASO HOBBS, N.M. 88240
(575) 393-3117 www.jwsc.biz
TBPLS# 10021000

Survey Date: 3/19/14

CAD Date: 4/1/14

Drawn By: ACK

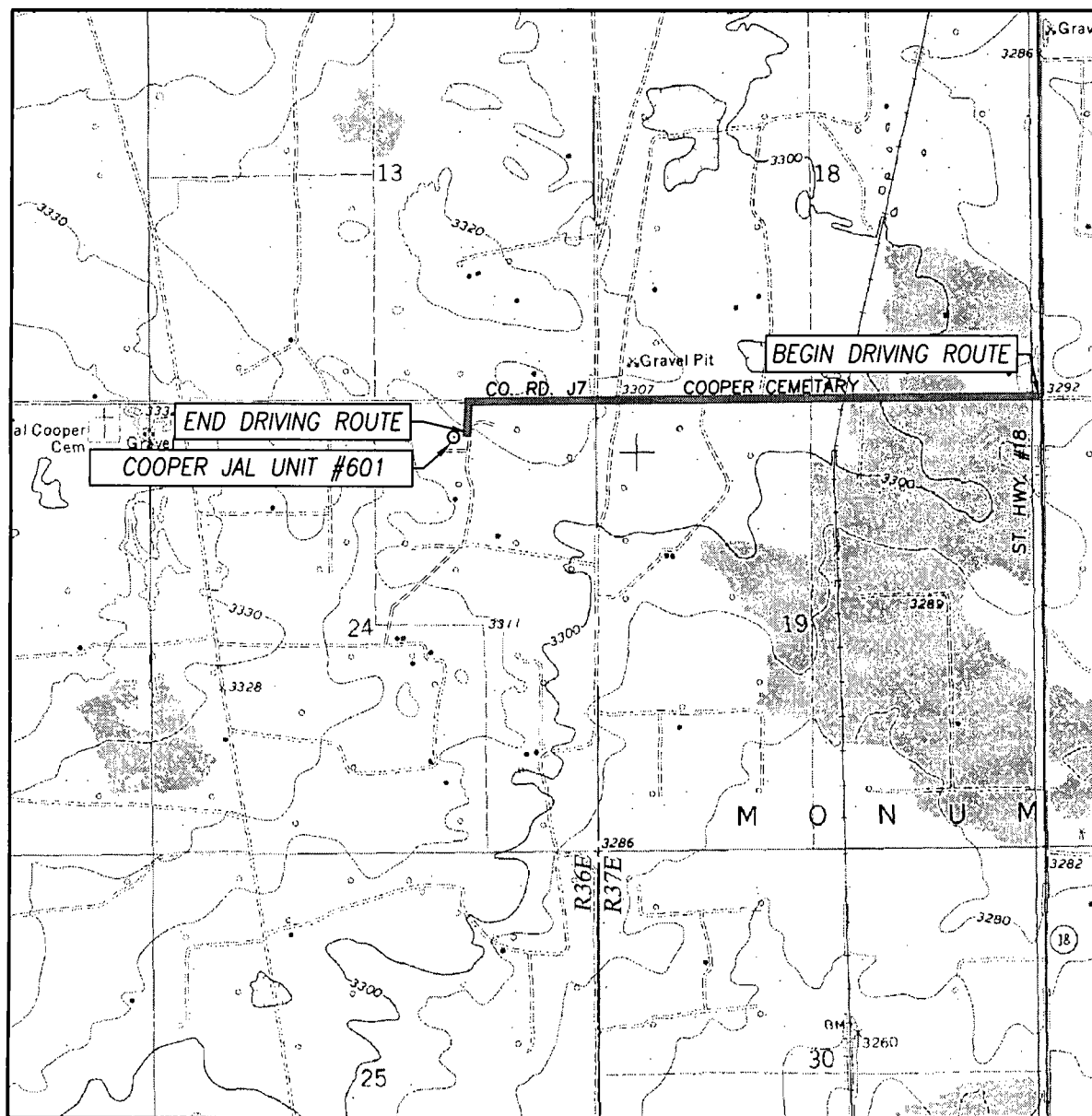
W.O. No.: 14110298

Rev. :

Rel. W.O.: 14110136

Sheet 1 of 1

LOCATION VERIFICATION MAP



SCALE: 1" = 2000'

CONTOUR INTERVAL:
JAL NW, N.M. - 10'

SEC. 24 TWP. 24-S RGE. 36-E

SURVEY N.M.P.M.

COUNTY LEA STATE NEW MEXICO

DESCRIPTION 420' FNL & 1690' FEL

ELEVATION 3310'

OPERATOR LEGACY RESERVES

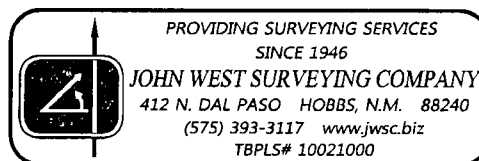
LEASE COOPER JAL UNIT

U.S.G.S. TOPOGRAPHIC MAP

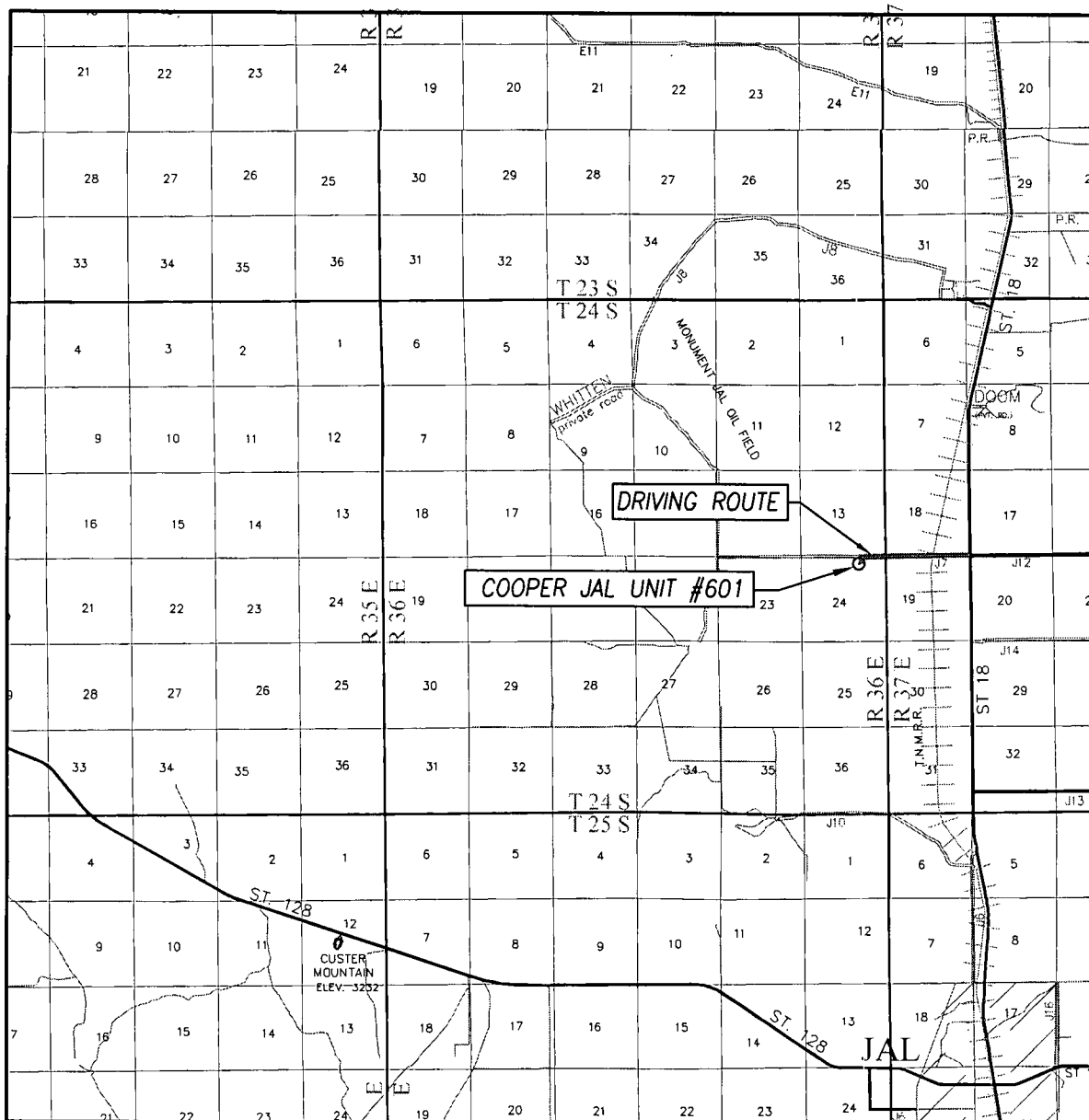
JAL NW, N.M.

DIRECTIONS TO COOPER JAL UNIT #601 WELL:

FROM THE INTERSECTION OF ST. HWY. 18 AND CO. RD. J7
(COOPER CEMETERY), GO WEST ALONG COOPER CEMETERY ROAD
APPROX. 1.2 MILES. TURN LEFT AND GO SOUTH APPROX. 400 FEET.
THIS LOCATION IS APPROX. 150 FEET WEST OF ROAD.



VICINITY MAP



SCALE: 1" = 2 MILES

DRIVING ROUTE: SEE LOCATION VERIFICATION MAP

SEC. 24 TWP. 24-S RGE. 36-E

SURVEY N.M.P.M.

COUNTY LEA STATE NEW MEXICO

DESCRIPTION 420' FNL & 1690' FEL

ELEVATION 3310'

OPERATOR LEGACY RESERVES

LEASE COOPER JAL UNIT

