

District I
1625 N. French Dr., Hobbs, NM 88240
District II
1301 W. Grand Avenue, Artesia, NM 88210
District III
1000 Rio Brazos Rd., Aztec, NM 87410
District IV
1220 S. St. Francis Dr., Santa Fe, NM 87505

HOBBS OCD

FEB 10 2014

RECEIVED

State of New Mexico
Energy, Minerals & Natural Resources Department
OIL CONSERVATION DIVISION
1220 South St. Francis Dr.
Santa Fe, NM 87505

Form C-102
Revised October 12, 2005
Submit to Appropriate District Office
State Lease- 4 Copies
Fee Lease- 3 Copies

☐ AMENDED REPORT

WELL LOCATION AND ACREAGE DEDICATION PLAT

API Number 30-025- 40536	Pool Code 97900	Pool Name Red Hills; Upper Bone Spring Shale
Property Code 39180	Property Name VACA "24" FED. COM	Well Number 5H
OGRID No. 7377	Operator Name EOG RESOURCES, INC.	Elevation 3328.7'

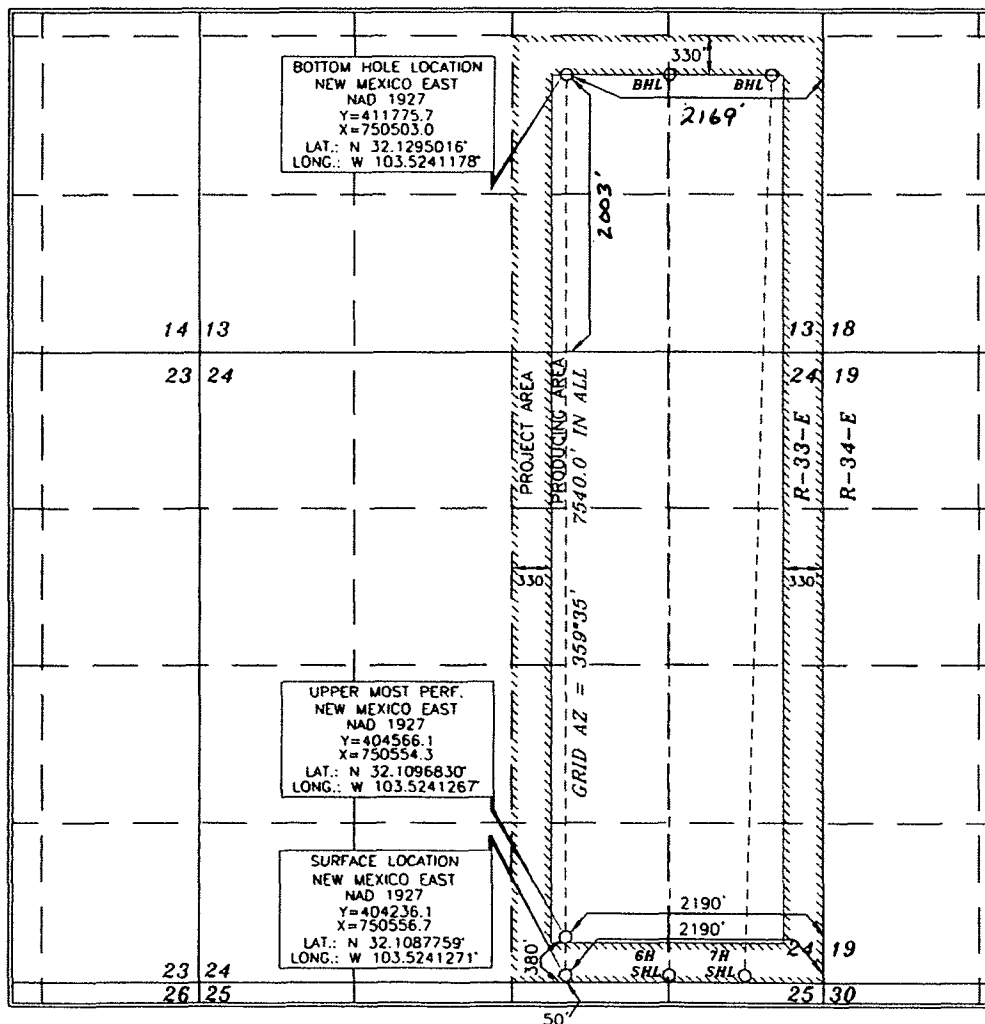
Surface Location

UL or lot no.	Section	Township	Range	Lot Idn	Feet from the	North/South line	Feet from the	East/West line	County
0	24	25 SOUTH	33 EAST, N.M.P.M.		50'	SOUTH	2190'	EAST	LEA

Bottom Hole Location If Different From Surface

UL or lot no.	Section	Township	Range	Lot Idn	Feet from the	North/South line	Feet from the	East/West line	County
J	13	25 SOUTH	33 EAST, N.M.P.M.		2003	SOUTH	2169'	EAST	LEA
Dedicated Acres 480		Joint or Infill	Consolidation Code	Order No. 2220					

No allowable will be assigned to this completion until all interests have been consolidated or a non-standard unit has been approved by the division.



OPERATOR CERTIFICATION

I hereby certify that the information contained herein is true and complete to the best of my knowledge and belief, and that this organization either owns a working interest or unleased mineral interest in the land including the proposed bottom hole location or has a right to drill this well at this location pursuant to a contract with an owner of such a mineral or working interest, or to a voluntary pooling agreement or a compulsory pooling order heretofore entered by the division.

Stan Wagner 10/18/11
Signature Date

Stan Wagner
Printed Name

SURVEYOR CERTIFICATION

I hereby certify that the well location shown on this plat was plotted from field notes of actual surveys made by me or under my supervision, and that the same is true and correct to the best of my belief.

15079
SEPTEMBER 15 2011
Date of Survey

Tommy D. Hall 10/4/2011
Signature and Seal of Professional Surveyor Certificate Number 15079

WOF 110915WL-C (KA)

APR 14 2014