

HOBBS OCD

District I
1625 N. French Dr., Hobbs, NM 88240
District II
1301 W. Grand Avenue, Artesia, NM 88210
District III
1000 Rio Brazos Rd., Aztec, NM 87410
District IV
1220 S. St. Francis Dr., Santa Fe, NM 87505

JAN 14 2014

RECEIVED

State of New Mexico
Energy, Minerals & Natural Resources
OIL CONSERVATION DIVISION
1220 South St. Francis Dr.
Santa Fe, NM 87505

Form C-102
Revised October 12, 2005

Submit to Appropriate District Office
State Lease - 4 Copies
Fee Lease - 3 Copies

☐ AMENDED REPORT

WELL LOCATION AND ACREAGE DEDICATION PLAT

¹ API Number 30-025-41003	² Pool Code 96674	³ Pool Name Triple X; Bone Spring, West
⁴ Property Code 39241	⁵ Property Name Mis Amigos	⁶ Well Number 2H
⁷ OGRID No. 005380	⁸ Operator Name XTO Energy, Inc	⁹ Elevation 3864

¹⁰ Surface Location

UL or lot no. P	Section 31	Township 23S	Range 33E	Lot. Idn	Feet from the 330	North/South line South	Feet from the 660	East/West line East	County Lea
--------------------	---------------	-----------------	--------------	----------	----------------------	---------------------------	----------------------	------------------------	---------------

¹¹ Bottom Hole Location If Different From Surface

UL or lot no. A	Section 31	Township 23S	Range 33E	Lot. Idn	Feet from the 330 332	North/South line North	Feet from the 702 734	East/West line East	County Lea
--------------------	---------------	-----------------	--------------	----------	-----------------------------	---------------------------	-----------------------------	------------------------	---------------

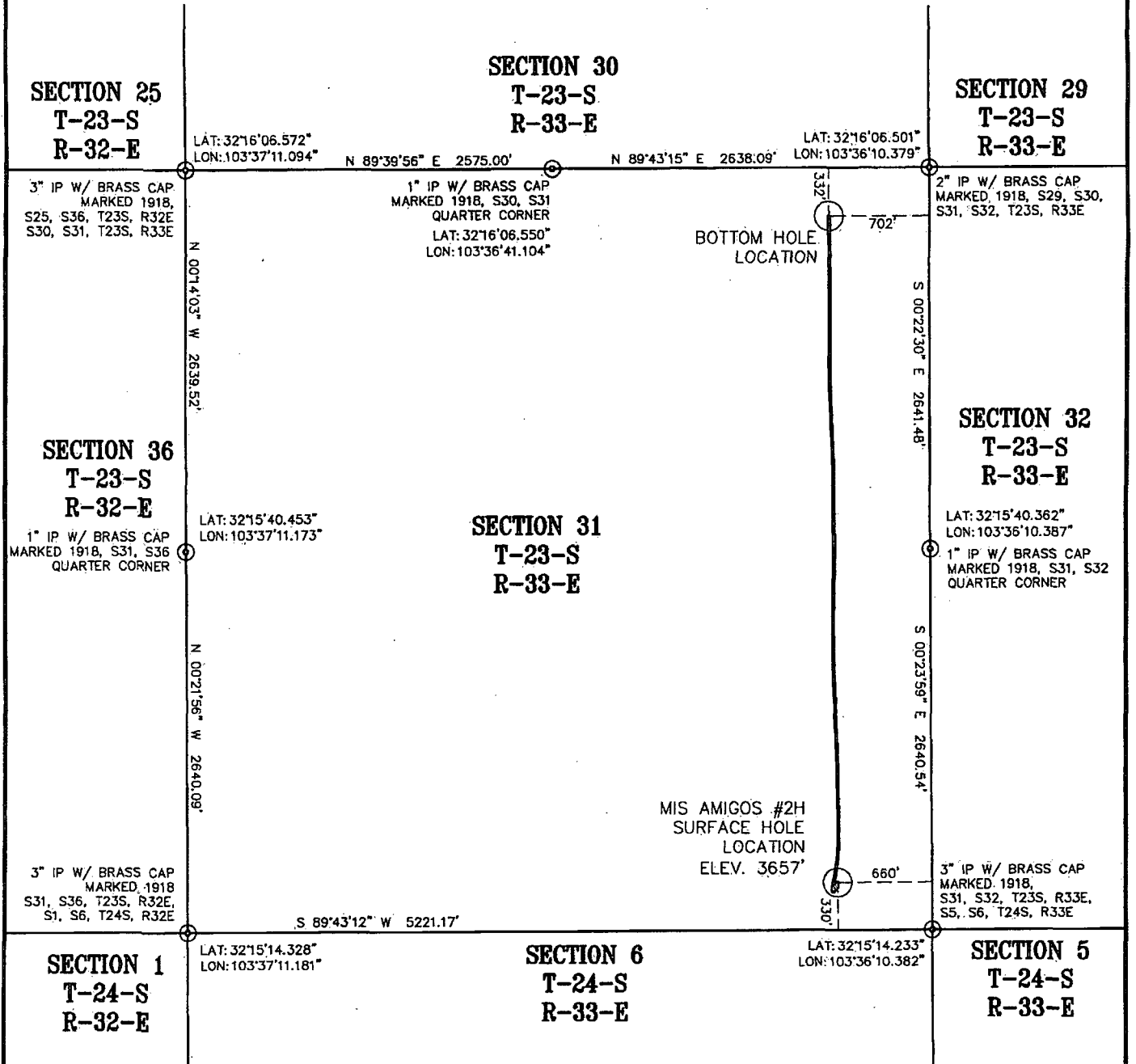
¹² Dedicated Acres 160	¹³ Joint or Infill	¹⁴ Consolidation Code	¹⁵ Order No.
--------------------------------------	-------------------------------	----------------------------------	-------------------------

NO ALLOWABLE WILL BE ASSIGNED TO THIS COMPLETION UNTIL ALL INTERESTS HAVE BEEN CONSOLIDATED OR A NON-STANDARD UNIT HAS BEEN APPROVED BY THE DIVISION

16			17 OPERATOR CERTIFICATION I hereby certify that the information contained herein is true and complete to the best of my knowledge and belief, and that this organization either owns a working interest or unleased mineral interest in the land including the proposed bottom hole location or has a right to drill this well at this location pursuant to a contract with an owner of such a mineral or working interest, or to a voluntary pooling agreement or a compulsory pooling order heretofore entered by the division. <u>Stephanie Rabadue</u> 10/08/2013 Signature Date Printed Name stephanie_rabadue@xtoenergy.com
			18 SURVEYOR CERTIFICATION I hereby certify that the well location shown on this plat was plotted from field notes of actual surveys made by me or under my supervision, and that the same is true and correct to the best of my belief. Date of Survey Signature and Seal of Professional Surveyer:
			Certificate Number
			330' 460'

APR 14 2014

LEA COUNTY, NEW MEXICO
SECTION 31, TOWNSHIP 23 SOUTH, RANGE 33 EAST
NEW MEXICO PRINCIPAL MERIDIAN



APPROXIMATELY 26.0 MILES NORTHWEST OF JAL, NEW MEXICO

SURFACE LOCATION:

NAD 83, NEW MEXICO EAST ZONE COORD'S
OF THE MIS AMIGOS #2H: N(Y)= 457216.6', E(X)= 766482.3'.
NAD 27, NEW MEXICO EAST ZONE COORD'S
OF THE MIS AMIGOS #2H: N(Y)= 457157.5', E(X)= 725298.5'.
WGS84, LATITUDE & LONGITUDE OF THE MIS AMIGOS #2H:
LAT= N 32°15'17.51", W 103°36'18.07".

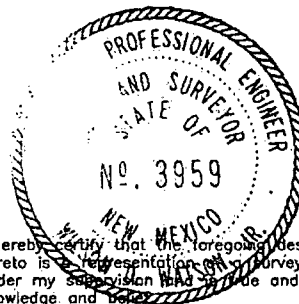
BOTTOM HOLE LOCATION:

NAD 83, NEW MEXICO EAST ZONE COORD'S
OF THE MIS AMIGOS #2H: N(Y)= 461836.4', E(X)= 766408.5'.
NAD 27, NEW MEXICO EAST ZONE COORD'S
OF THE MIS AMIGOS #2H: N(Y)= 461777.2', E(X)= 725224.9'.
WGS84, LATITUDE & LONGITUDE OF THE MIS AMIGOS #2H:
LAT= N 32°16'03.23", W 103°36'18.56".

BOTTOM HOLE LOCATION AND
AS-DRILLED PATH SHOWN
HEREON FOR THE #2H WAS
PROVIDED BY XTO ENERGY.

LEGEND:

- WELL
⊙ IRON PIPE FOUND (IP)

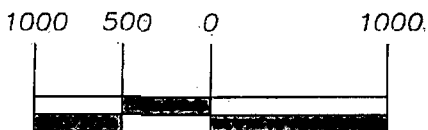


I hereby certify that the foregoing description and plat attached
hereto is a representation of a survey completed on the ground
under my supervision and is true and correct to the best of my
knowledge and belief.

DATE

W.D. WATSON, JR.

NEW MEXICO P.L.S. No. 3959



SCALE 1" = 1000'
GRID

John F. Watson & Company

LAND & DEVELOPMENT SERVICES
PROFESSIONAL LAND SURVEYORS

200 N. Lomane, Suite 220
Midland, Texas 79701
jwatson@windearthwater.com

off: (432) 520-2400
fax: (432) 520-2404
mob: (432) 528-0074

Your Partner for Responsible Development

Watson
Professional
Group Inc



P.O. DRAWER 11186
MIDLAND, TEXAS
79702
(432) 520-9200
FAX (432)
520-9212
wdwatson@wp-g-us.com

CONSULTING ENGINEERS, LAND SURVEYORS & PLANNERS

XTO ENERGY, INC.
MIS AMIGOS #2H
330' FSL & 660' FEL
SECTION 31
T-23-S,
R-33-E,
LEA COUNTY,
NEW MEXICO

REV: 07/25/13
JOB No.: 12-0107
FIELD BOOK: JC-118/14
DRAWN BY: XAC
CHK BY: JFW/KP
FILE: S:\2012\T-23-S,
R-33-E, LEA CO, NEW
MEXICO
PAGE 1 OF 1