

District I  
1625 N. French Dr., Hobbs, NM 88240  
District II  
1301 W. Grand Avenue, Artesia, NM 88210  
District III  
1000 Rio Brazos Rd., Aztec, NM 87410  
District IV  
1220 S. St. Francis Dr., Santa Fe, NM 87505

HOBBS OGD

FEB 10 2014

RECEIVED

# WELL LOCATION AND ACREAGE DEDICATION PLAT

State of New Mexico

Energy, Minerals & Natural Resources Department

OIL CONSERVATION DIVISION

1220 South St. Francis Dr.

Santa Fe, NM 87505

Form C-102

Revised October 12, 2005

Submit to Appropriate District Office

State Lease- 4 Copies

Fee Lease- 3 Copies

☐ AMENDED REPORT

API Number 30-025- 40537	Pool Code 97900	Pool Name Red Hills; Upper Bone Spring Shale
Property Code 39180	Property Name VACA "24" FED. COM	Well Number 6H
OGRID No. 7377	Operator Name EOG RESOURCES, INC.	Elevation 3329.4'

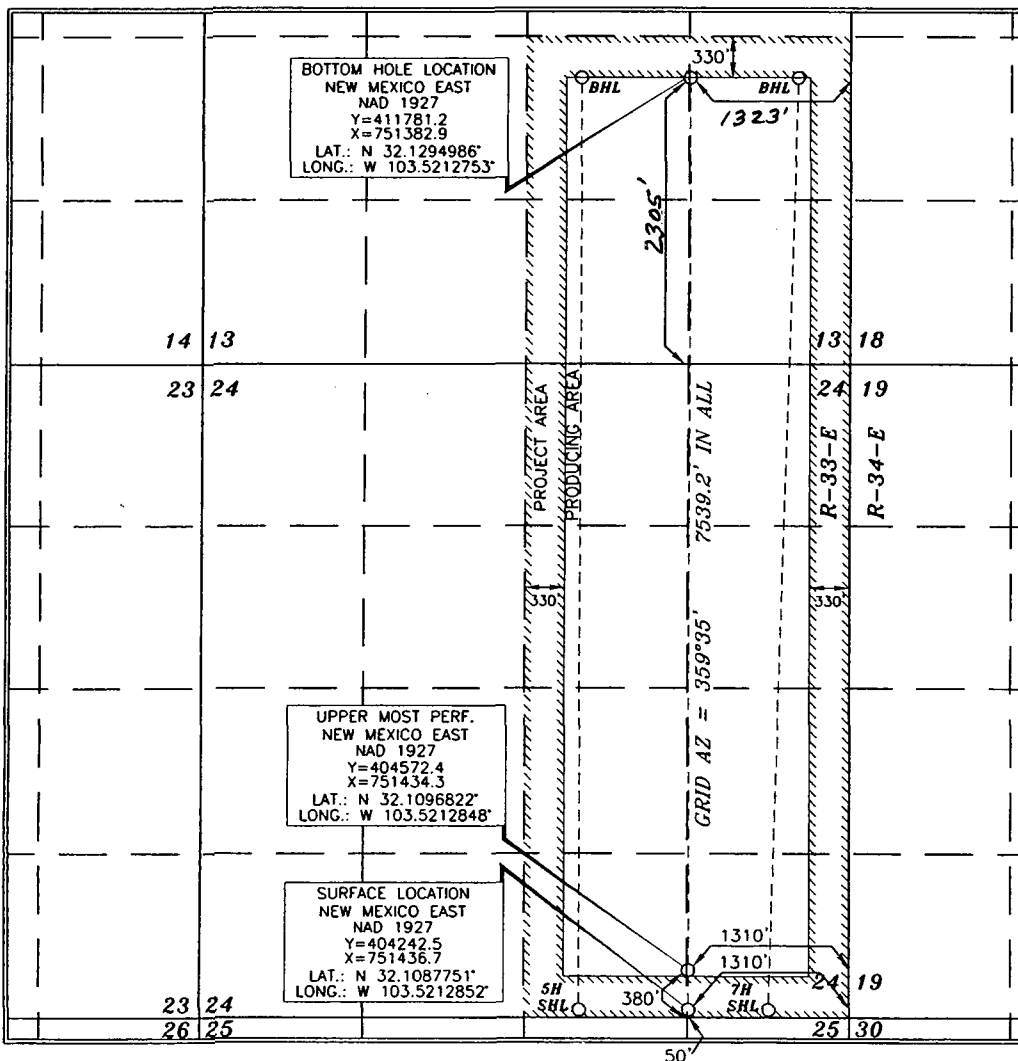
## Surface Location

UL or lot no. P	Section 24	Township 25 SOUTH	Range 33 EAST, N.M.P.M.	Lot Idn	Feet from the 50'	North/South line SOUTH	Feet from the 1310'	East/West line EAST	County LEA
--------------------	---------------	----------------------	----------------------------	---------	----------------------	---------------------------	------------------------	------------------------	---------------

## Bottom Hole Location If Different From Surface

UL or lot no. I	Section 13	Township 25 SOUTH	Range 33 EAST, N.M.P.M.	Lot Idn	Feet from the 2305	North/South line SOUTH	Feet from the 1375 1323	East/West line EAST	County LEA
Dedicated Acres 480	Joint or Infill	Consolidation Code	Order No.						

No allowable will be assigned to this completion until all interests have been consolidated or a non-standard unit has been approved by the division.



## OPERATOR CERTIFICATION

I hereby certify that the information contained herein is true and complete to the best of my knowledge and belief, and that this organization either owns a working interest or unleased mineral interest in the land including the proposed bottom hole location or has a right to drill this well at this location pursuant to a contract with an owner of such a mineral or working interest, or to a voluntary pooling agreement or a compulsory pooling order heretofore entered by the division.

*Roger Motley* 10-12-2011  
Signature Date

*Roger Motley*  
Printed Name

## SURVEYOR CERTIFICATION

I hereby certify that the well location shown on this plat was plotted from field notes of actual surveys made by me or under my supervision, and that the same is true and correct to the best of my belief.

*ERRY J. AS*  
15079  
SEPTEMBER 15, 2011  
Date of Survey

Signature and Seal of Professional Surveyor

*ERRY J. AS* 10/4/2011  
Certificate Number 15079

WO# 110915WL-b (KA)

APR 14 2014